



PIN NO.	A	B	C
10	3.80	3.20	1.60
20	5.80	5.20	3.60
24	6.60	6.00	4.40
30	7.80	7.20	5.60
34	8.60	8.00	6.40
40	9.80	9.20	7.60
48	11.40	10.80	9.20
50	11.80	11.20	9.60
60	13.80	13.20	11.60
70	15.80	15.20	13.60
80	17.80	17.20	15.60

SPECIFICATIONS:

Current Rating:0.5A

Voltage Rating:50V AC/DC

Withstanding voltage:150V AC Ong minute

Contact Resistance:50milliohm Max

Insulation Resistance:100Megohm Min

Operation Temperature:-20°C to +105°C

Insulator:LCP (UL94V-0) Black

Contact Material:Phosphor Btonze

Contact plating:Au or Sn over Ni

Ordering Code:

BB0.4 - M - 1.0 - X - X - X - 01

① ② ③ ④ ⑤ ⑥ ⑦

① Series NO:

0.4mm Board to Board connector

② M:Male F:Female

③ mating Height:

1.0=1.0mm

④ NO. of contacts:

see table
For example
10:10poles

⑤ Contact Plating

G0: Gold flash

G1: 3u" Gold

G2: 5u" Gold

G3: 10u" Gold

G4: 15u" Gold

G5: 30u" Gold

SN: Tin

⑥ Packing

T:Tube A:Tray

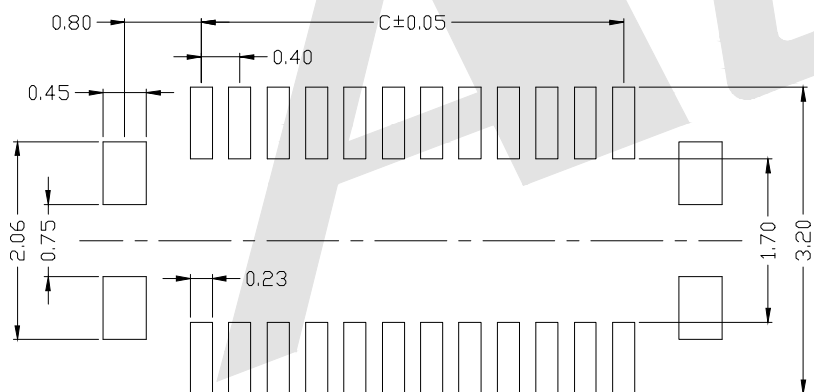
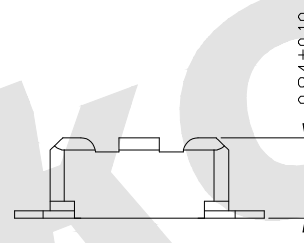
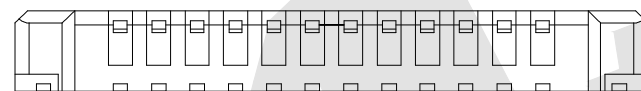
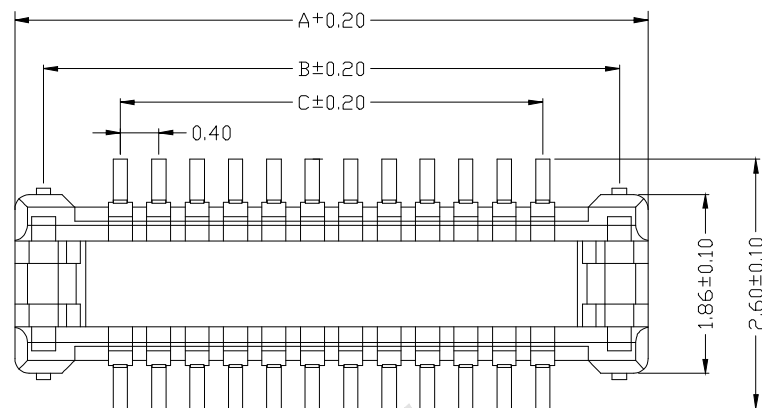
B:Bag U:Tube+CAP

R:tape&Reel

W:tape&Reel+CAP

⑦ serial number:

01



RECOMMENDED PCB LAYOUT
CONNECTOR SIDE

Unless Otherwise specified tolerance

X. ±0.35 X.XX:±0.20
X.X:±0.25 X.XXX:±0.15

SCALE: As Shown UNIT: mm

DRAW ZLA DATE 24/10/2022

CHECK BobYang DATE 24/10/2022

VER. A0

3rd ANGLE PROJECTION

Atkconn® ATKCONN ELECTRONICS CO., LTD
[Http://www.atkconn.com](http://www.atkconn.com)

TITLE: 0.4mm Board to Board connector,
Male, mating Height=1.0mm

DRAWING NO: BB0.4M-1.0XXX01

PRODUCT NO: BB0.4M-1.0XXX01

REV	DESCRIPTION	DATE
1		
2		
3		
4		
5		