

江阴市美途精密材料有限公司

JIANGYIN MITOO PRECISE CO., LTD



MITOO

> 企业简介 About US

江阴市美途精密材料有限公司成立于 2008 年，位于江苏省江阴市，毗邻上海市。我们主要生产特种精密冷轧钢带，主要钢种有弹簧钢、工具钢、轴承钢、优质碳素结构钢、合金结构钢等，产品广泛应用于汽车配件，五金工具，切割工具，传动系统等行业。

公司生产设备精良，技术力量雄厚，拥有 EBNER 全氢退火炉 12 组，650 四棍 AGC 可逆冷轧机组 1 台，450 四棍 AGC 可逆冷轧机组 2 台，350 二十辊冷轧机组 1 台、EBNER 铅浴等温热处理线 3 条，油淬热处理线 2 条，水淬热处理线 6 条，精密分条机，平整机，修边机，拉矫机等同行业较为先进的设备和工艺技术，具有雄厚的生产能力。成品板面平直，厚度公差均匀，表面洁净，产品质量符合国家高精度标准。产品具有硬度均匀，强度高，韧性、塑性好等良好的综合机械性能，同时产品的几何尺寸和形状也得到充分的保证，有很好的平整度，直线度和表面光洁度。

公司汇聚钢铁领域的高尖人才，公司管理团队都有在大型钢铁企业从事管理，技术，销售等工作经验，在国内优特钢的生产，开发领域，是开拓者和践行者。同时也积极参与全球钢铁行业的市场研究和开发，以满足不同客户的个性要求。

公司依托地缘优势、技术优势，人才优势，秉承创新进取、专业诚信、优质高效、客户至上、有求必应的企业精神公司，愿景是成为特殊钢钢带市场的引领者。

Jiangyin Mitoo Precise Co., Ltd. was established in 2008, located in Jiangyin, Jiangsu Province, adjacent to Shanghai. We mainly produce special precision cold-rolled steel strip. The main steel types are spring steel, tool steel, bearing steel, high-quality carbon structural steel, alloy structural steel, etc. the products are widely used in auto parts, hardware tools, cutting tools, transmission systems and other industries.

Our company has excellent production equipment and strong technical force. We have 12 sets of EBNER full hydrogen annealing furnaces , 1 set of 650mm 4 Hi- cold rolling AGC reversing mill, 1 set of 450mm 4 Hi- cold rolling AGC reversing mill, 2 sets of 350mm 20 Hi cold rolling mill, 3 sets of EBNER lead bath isothermal heat treatment lines, 2 sets of oil quenching heat treatment lines, 6 sets of water quenching heat treatment lines, precision slitting lines, leveling machines, trimming machines, skin passing mill and so on, which is more advanced equipment and technology than other competitors in domestic of China.

The finished strip has clean surface, uniform thickness and tolerance, the quality of our strip is more precise than our national standard. At the same time also have the quenching and tempering production line from Austria which is more advanced production equipment and production technology than our competitor. With the heat treated production line, we can produce the products with uniform hardness, high strength, and good comprehensive mechanical properties. Also the geometry tolerance and shape of products has also been fully guaranteed.

The Company gathered the top talents of special steels. Our management team has engaged in the management, technology, and sales work for large-scale iron and steel enterprises for many years. They are the pioneer and practitioner in domestic special steel production. At the same time, we are also actively involved in the global steel industry market research and development, to meet the individual requirements of different customers.

Relying on the geographical advantage, technology and talent advantages, adhering to sprint of enterprise as innovation and enterprising, professional integrity, quality and efficient, customer first, accede to the demands, our company is intending to become the leading company of special precise steel material in the world.

产品大纲 Products Scope

结构钢 STRUCTURAL STEEL

DIN(Germany)	ASTM(USA)	JIS(Japan)	GB(China)
C10-C60E/CK10-CK78	1010-1078	S10C-S58C	#10-#75
15Mn3-60Mn3	1016-1062	SWRH42B-62B	15Mn-60Mn
10S20-35S20	1112-1141	SUM21-42	Y12-Y40Mn
15Cr3-41Cr4	5115-5150	SCr415-445	15-50Cr
16-20MnCr5	5115-5120	SMnC420	15-20CrMn
75Cr1	4118-1140	SCM415-445	12-42CrMo
51CrV4	6120-6150	SUP10	20CrV-50CrVA
50CrNiMoVA	D6A	--	D6A
68CrNiMo-33	8660	--	8660

轴承钢 BEARING STEEL

DIN(Germany)	ASTM(USA)	JIS(Japan)	GB(China)
100Cr6	E52100	SUJ2	GCr15
100CrMn6	--	--	GCr15SiMn
100CrMo7	--	SUJ4	GCr18Mo
X105CrMo17	440C	--	9Cr18Mo/11Cr17

弹簧钢 SPRING STEEL

DIN(Germany)	ASTM(USA)	JIS(Japan)	GB(China)
CK65-CK85	1065-1086	SUP2P	#65-#85
55Si7-65Si7	9255-9260	SUP6-7	55-62Si2Mn
55Cr3	5155-5160	SUP9-9A	55-60CrMnA
58CrMnB4	51B60	SUP11A	60CrMnBA
51CrV4-58CrV4	6150	SUP10	50CrVA-58CrV4

马氏体不锈钢 STAINLESS STEEL

DIN(Germany)	ASTM(USA)	JIS(Japan)	GB(China)
X10Cr13-X38Cr13	410-420	SUS410-420	1-4Cr13
X70-105CrMo17	440A/B/C	SUS440A/B/C	7-11Cr17(Mo)
X45CrSi9-3	HNV3	SUH1	4Cr9Si2

工模具钢 DIE AND TOOL STEEL

DIN(Germany)	ASTM(USA)	JIS(Japan)	GB(China)
C90U(1.1830)	W1-C-8	SK85(SK5)	T8(A)
C105W2(1.1545)	W1A-91/2	SK95(SK4)	T10(A)
C120U(1.1663)	W1A-111/2	SK120(SK2)	T12(A)
--	L6	SKS51	SKS51
1.5634	--	75Ni8	75Ni8
X32CrMoV4-1(1.239)	--	X32	X32

➤ 主要设备 Main Equipments

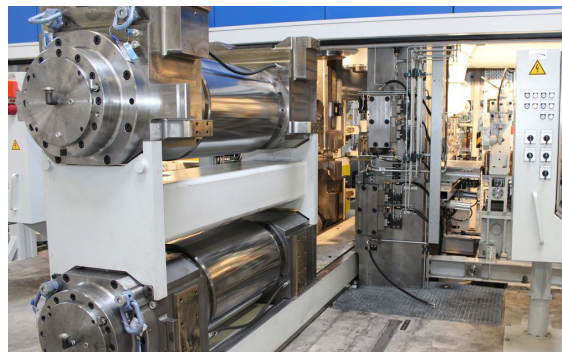
■ 分条设备 SLITTING MACHINE



■ 全氢罩式退火炉 HICON/H2 BELL TYPE ANNEALING FURNACE



■ 冷轧机组 COLD ROLLED MACHINE



■ 热处理炉 HEAT TREATMENT FURNACE



■ 打包机 PACKAGING MACHINE



➤ 品质控制 Quality Control



“创美途品牌，保用户满意”是公司牢固的质量方针。公司以全面贯彻 S901(2000) 国际质量管理标准为基础，以“经营服从市场，生产服从经营，其他服从生产”的理念，锲而不舍，追求卓越，打造特种钢带精品，与用户结成战略合作伙伴关系，达到双赢境界。

"Create brand name of mitoo to meet the highest requirements from customers" is the consistent quality policy of the company. On the basis of full implementation of IS9001(2000) international quality control standard, Mascot Special Steel deems "operation subject to market, production subject to operation, others subject to production" as the operation concept, keeps on caring unflinchingly work with perseverance, pursues outstanding, combines with consumers as strategic partner to reach the ideal ambit of "double wins".



产品尺寸 Production Size

生产范围根据尺寸公差和硬度变化。

冷轧特殊钢带和热处理钢带的生产范围如图 1 所示和图 2 所示。

Production range changes in accordance with dimensional tolerance hardness.

The production range of cold-rolled special steel strip and Heat treated steel strip is shown in Table 1 and 2.



Table 1
cold rolled steel strip(mm)

厚度 Thickness	宽度 Width
0.2	300
0.3	300
0.4	300
0.5	350
0.6	350
0.7	350
0.8	400
0.9	400
1.0	500
1.1	500
1.2	500
1.3	500
1.4	500
1.5	600

Table 2
Quenching and tempering steel strip(mm)

厚度 Thickness	宽度 Width
0.2	300
0.3	300
0.4	300
0.5	350
0.6	350
0.7	350
0.8	400
0.9	400
1.0	500
1.1	500
1.2	500
1.3	500
1.4	500
1.5	520

■ 厚度尺寸公差 THICKNESS AND TOLERANCE

Nominal thickness (mm)		Thickness tolerance for nominal width								
		W < 125			125 ≤ W < 250			250 ≤ W < 580		
>	=	A	B	C	A	B	C	A	B	C
	0.10	± 0.008	± 0.006	± 0.004	± 0.010	± 0.008	± 0.005	± 0.015	± 0.012	± 0.010
0.10	0.15	± 0.010	± 0.008	± 0.005	± 0.015	± 0.012	± 0.010	± 0.020	± 0.015	± 0.010
0.15	0.25	± 0.015	± 0.012	± 0.010	± 0.020	± 0.015	± 0.010	± 0.025	± 0.015	± 0.012
0.25	0.40	± 0.020	± 0.015	± 0.010	± 0.025	± 0.020	± 0.015	± 0.030	± 0.020	± 0.015
0.40	0.60	± 0.025	± 0.020	± 0.015	± 0.030	± 0.025	± 0.015	± 0.035	± 0.025	± 0.020
0.60	1.00	± 0.030	± 0.025	± 0.015	± 0.035	± 0.030	± 0.020	± 0.040	± 0.030	± 0.025
1.00	1.50	± 0.035	± 0.030	± 0.020	± 0.040	± 0.035	± 0.025	± 0.045	± 0.035	± 0.025
1.50	2.50	± 0.045	± 0.035	± 0.025	± 0.045	± 0.035	± 0.025	± 0.045	± 0.035	± 0.025
2.50	4.00	± 0.045	± 0.035	± 0.025	± 0.045	± 0.035	± 0.025	± 0.050	± 0.040	± 0.030
4.00	6.00	± 0.045	± 0.035	± 0.025	± 0.045	± 0.035	± 0.025	± 0.050	± 0.040	± 0.030

■ 宽度尺寸公差 WIDTH AND TOLERANCE

Nominal thickness		Tolerance of width for nominal thickness					
		W < 125		125 ≤ W < 250		250 ≤ W < 580	
>	=	A	B	A	B	A	B
	0.60	± 0.15	± 0.10	± 0.20	± 0.13	± 0.25	± 0.18
0.60	1.50	± 0.20	± 0.13	± 0.25	± 0.18	± 0.30	± 0.20
1.50	2.50	± 0.25	± 0.18	± 0.30	± 0.20	± 0.35	± 0.25
2.50	4.00	± 0.30	± 0.20	± 0.35	± 0.25	± 0.40	± 0.30
4.00	6.00	± 0.35	± 0.25	± 0.40	± 0.30	± 0.45	± 0.35

NOTE 1 For strip in the hardened and tempered condition, the tolerances on width are to be agreed at the time of ordering.

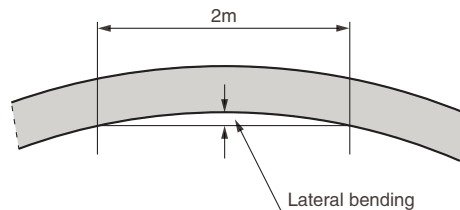
■ 表面粗糙度 SURFACE ROUGHNESS

Thickness mm	Roughness					
	Class 1		Class 2		Class 3	
t < 0.500	Ra < 0.30 μm Rt < 3.00 μm		Ra < 0.25 μm Rt < 2.50 μm		Ra < 0.20 μm Rt < 2.00 μm	
0.500 ≤ t < 0.700	Ra < 0.35 μm Rt < 3.50 μm					
0.700 ≤ t < 1.000	Ra < 0.40 μm Rt < 4.00 μm		Ra < 0.35 μm Rt < 3.50 μm		Ra < 0.30 μm Rt < 3.00 μm	
1.000 ≤ t < 1.750	Ra < 0.50 μm Rt < 5.00 μm		Ra < 0.45 μm Rt < 4.50 μm		Ra < 0.40 μm Rt < 4.00 μm	
1.750 ≤ t < 2.500	Ra < 0.60 μm Rt < 6.00 μm		Ra < 0.55 μm Rt < 5.50 μm		Ra < 0.50 μm Rt < 5.00 μm	

■ 横向弯曲公差 LATERAL BENDING TOLERANCE

Lateral bending tolerance values (except for the first and last meters) are shown right. They are arbitrarily measured every two meters.

Diagram-1



(Units: mm)

Width	Grade	Lateral Bending Tolerance Value		
		A	S	SS
10 and <20		20	15	12
20 and <40		15	10	8
40 and <80		8	6	4
80 and 450		4	3	—

■ 纵向公差 LONGITUDINAL TOLERANCE

This table shows the longitudinal tolerance for cold-rolled special steel strip that has been sheared into cut-sheets.

(Units: mm)

Length	Width	Less than 200	More than 200, less than 450
		950 and 2,000	+5 -0
2,000>and 2,500		+10 -0	+20 -0

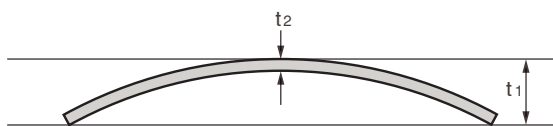
■ 平面度公差 FLATNESS TOLERANCE

This table gives the flatness tolerance, which is determined by deducting the thickness of the material from the total warp. This value is pertinent only for cold-rolled special steel strip that has been sheared into cut-sheets.

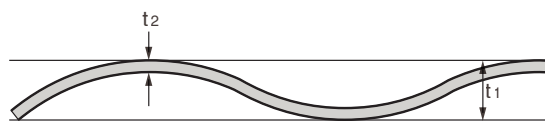
(Units: mm)

Tolerance			Thickness			
			Less than 0.60	More than 0.60, less than 1.20	More than 1.20, less than 3.20	More than 3.20, less than 5.00
Width: Less than 200	Annealed	Widthwise	1.0	1.0	1.5	2.0
		Lengthwise	2.0	3.0	3.0	5.0
	Hard-drawn	Widthwise	1.0	1.5	1.5	2.5
		Lengthwise	3.0	4.0	4.0	6.0
Width: more than 200, Less than 450	Annealed	Widthwise	1.5	2.0	2.5	3.0
		Lengthwise	4.0	5.0	5.0	7.0
	Hard-drawn	Widthwise	1.5	2.0	3.0	4.0
		Lengthwise	6.0	7.0	7.0	9.0

Diagram-5



Widthwise flatness = $t_1 - t_2$



Lengthwise flatness = $t_1 - t_2$

➤ 各种硬度值对照表

Comparison table of various hardness values

布氏硬度 (HB)	洛氏硬度			维氏硬度 (HV)	肖氏硬度 (HS)	布氏硬度 (HB)	洛氏硬度			维氏硬度 (HV)	肖氏硬度 (HS)
	(HRA)	(HRB)	(HRC)				(HRA)	(HRB)	(HRC)		
—	85.6	—	68.0	940	97	375	70.6	—	40.4	396	54
—	85.3	—	67.5	920	96	363	70.0	—	39.1	383	52
—	85.0	—	67.0	900	95	352	69.3	—	37.9	372	51
767	84.7	—	66.4	880	93	341	68.7	—	36.6	360	50
757	84.4	—	65.9	860	92	331	68.1	—	35.5	350	48
745	84.1	—	65.3	840	91	321	67.5	—	34.3	339	47
733	83.8	—	64.7	820	90	311	66.9	—	33.1	328	46
722	83.4	—	64.0	800	88	302	66.3	—	32.1	319	45
710	83.0	—	63.3	780	87	293	65.7	—	30.9	309	43
698	82.6	—	62.5	760	86	285	65.3	—	29.9	301	—
684	82.2	—	61.8	740	—	277	64.6	—	28.8	292	41
682	82.2	—	61.7	737	84	269	64.1	—	27.6	284	40
670	81.8	—	61.0	720	83	262	63.6	—	26.6	276	39
656	81.3	—	60.1	700	—	255	63.0	—	25.4	269	38
653	81.2	—	60.0	697	81	248	62.5	—	24.2	261	37
647	81.1	—	59.7	690	—	241	61.8	100.0	22.8	253	36
638	80.8	—	59.2	680	80	235	61.4	99.0	21.7	247	35
630	80.6	—	58.8	670	—	229	60.8	98.2	20.5	241	34
627	80.5	—	58.7	667	—	223	—	97.3	—	234	—
620	80.3	—	58.3	660	79	217	—	96.4	—	228	33
601	79.8	—	57.3	640	77	212	—	95.5	—	222	—
578	79.1	—	56.0	615	75	207	—	94.6	—	218	32
—	78.8	—	55.6	607	—	201	—	93.8	—	212	31
555	78.4	—	54.7	591	73	197	—	92.8	—	207	30
—	78.0	—	54.0	579	—	192	—	91.9	—	202	29
534	77.8	—	53.5	569	71	187	—	90.7	—	196	—
—	77.1	—	52.5	553	—	183	—	90.0	—	192	28
514	76.9	—	52.1	547	70	179	—	89.0	—	188	27
—	76.7	—	51.6	539	—	174	—	87.8	—	182	—
—	76.4	—	51.1	530	—	170	—	86.8	—	178	26
495	76.3	—	51.0	528	68	167	—	86.0	—	175	—
—	75.9	—	50.3	516	—	163	—	85.0	—	171	25
477	75.6	—	49.6	508	66	156	—	82.9	—	163	—
—	75.1	—	48.8	495	—	149	—	80.9	—	156	23
461	74.9	—	48.5	491	65	143	—	78.7	—	150	22
—	74.3	—	47.2	474	—	137	—	76.4	—	143	21
444	74.2	—	47.1	472	63	131	—	74.0	—	137	—
429	73.4	—	45.7	455	61	126	—	72.0	—	132	20
415	72.3	—	44.5	440	59	121	—	69.8	—	127	19
401	72.0	—	43.1	425	58	116	—	67.6	—	122	18
388	71.4	—	41.8	410	56	111	—	65.7	—	117	15

》 交货状态和硬度 Finish and Hardness

■ 冷轧特殊钢带有以下交货状态

COLD-ROLLED SPECIAL STEEL STRIP IS AVAILABLE IN THE FOLLOWING FINISHES.

Stage	Symbol	Condition
Annealing	A	Annealing is implemented after cold rolling.
Skinpass	S	Annealing and thermal refining are implemented after cold rolling.
Deep drawing	C	Cold rolling is implemented.
Patenting	PT	Patenting treatment and fixed cold rolling are implemented.
PPC	PC	Spheroidal carbide is refined.

■ 特殊交货状态 STEEL WITH SPECIAL FINISHES

PPC FINISH

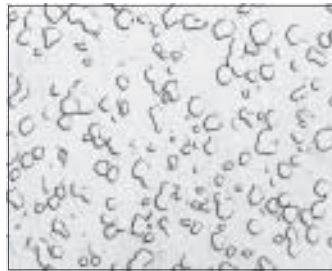
PPC steel is manufactured by finely distributing spheroidized carbides(approximately one-fifth of a carbide particle in diameter) on a special hotrolled strip and possesses the following strengths.

- The austenitization period is short, thereby allowing rapid hardening.
- During annealing, hardness of HV250 can be achieved. Through cold rolling and aging treatment, this can be raised to HV350, making it useful as heat-conserving material.

Standard	Type of Steel	Annealing	Production Range(Thickness)
JIS	SK95(SK4)	HV250 ~ 310	0.3 ~ 6.0mm
	SK85(SK5)		



Ordinary material ×4,600



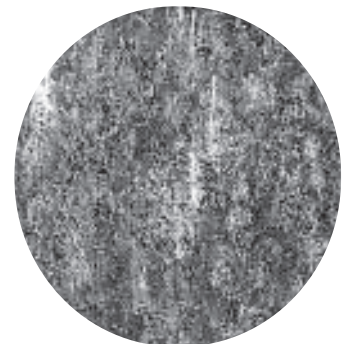
PPC ×4,600

PT FINISH

PT steel is manufactured by applying a patenting treatment and then fixed cold rolling. Hardness of more than HV500 can be obtained through cold rolling and aging treatment.

This steel can be used in ordinary chains and springs and as heat-conserving material.

Standard	Type of Steel	Hardness
JIS	S75C	HV450 ~ 500
	S78C	HV500 ~ 550



PT ×400

Sorbite structure

Hardness: HRC40 ~ 55

Tensile strength: 1,200 ~ 1,800N/mm²

Elongation: 4% ~ 10%

■ 弹簧用钢洛氏硬度参考值

REFERENCE VALUES FOR ROCKWELL HARDNESS FOR STEELS FOR SPRINGS

Steel designation name	delivery condition annealed(+A) or annealed and skin passed(+LC) HRBc Max	quenched and b tempered(+QT) HRCc
C55S	90	34 to 50,5
C60S	91	35 to 51,5
C67S	92	38,5 to 54
C75S	93	38,5 to 54
C85S	94	38,5 to 55
C90S	94	38,5 to 55
C100S	95	38,5 to 57
C125S	97	38,5 to 57
48Si7	95	38,5 to 50,5
56Si7	96	38,5 to 50,5
51CrV4	94	38,5 to 52,5
80CrV2	95	38,5 to 52,5
75Ni8	93	38,5 to 52,5
125Cr2	97	42 to 57
102Cr6	97	42 to 57

■ 机械性能和硬度要求

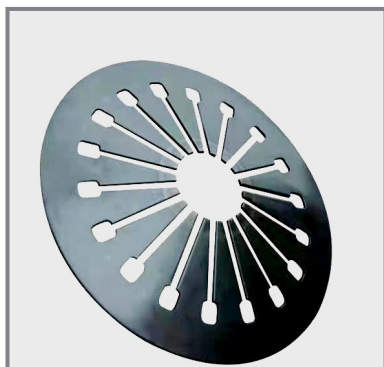
MECHANICAL PROPERTIES AND HARDNESS REQUIREMENTS

Steel designation	Delivery condition							
	annealed(+A) or annealed and skin passed(+LC)				cold rolled (+CR)		quenched and tempered (+QT)	
Name	R _{p0.2} N/mm ² max	R _m N/mm ² max	A80% min	HV max	R _m N/mm ² max	HV max	R _m N/mm ²	HV
C50S	470	580	17	175	1050	290	1050 to 1650	335 to 510
C55S	480	600	17	185	1070	300	1100 to 1700	340 to 520
C60S	495	620	17	195	1100	305	1150 to 1750	345 to 530
C67S	510	640	16	200	1140	315	1200 to 1900	370 to 580
C75S	510	640	15	200	1170	320	1200 to 1900	370 to 580
C85S	535	670	15	210	1190	325	1200 to 2000	370 to 600
C90S	545	680	14	215	1200	325	1200 to 2100	370 to 600
C100S	550	690	13	220	1200	325	1200 to 2100	370 to 630
C125S	600	740	11	230	1200	325	1200 to 2100	370 to 630
48Si7	580	720	13	225	-	-	1200 to 1700	370 to 520
56Si7	600	740	12	230	-	-	1200 to 1700	370 to 520
51CrV4	550	700	13	220	-	-	1200 to 1800	370 to 550
80CrV2	580	720	12	225	-	-	1200 to 1800	370 to 550
75Ni8	540	680	13	210	-	-	1200 to 1800	370 to 550
125Cr2	590	750	11	235	-	-	1300 to 2100	405 to 630
102Cr6	590	750	11	235	-	-	1300 to 2100	405 to 630

➤ 主要用途 Main purpose

■ 汽车配件 AUTO PARTS

安全扣，离合器片，膜片，滑轨
Safety buckle, clutch plate, diaphragm.



Mainly Steel Grade : CK45,S45C,C55S,C60S,C75S,51CrV4

■ 五金工具 HARDWARE TOOLS

钥匙，卷尺，钢包头，锉刀，修枝剪

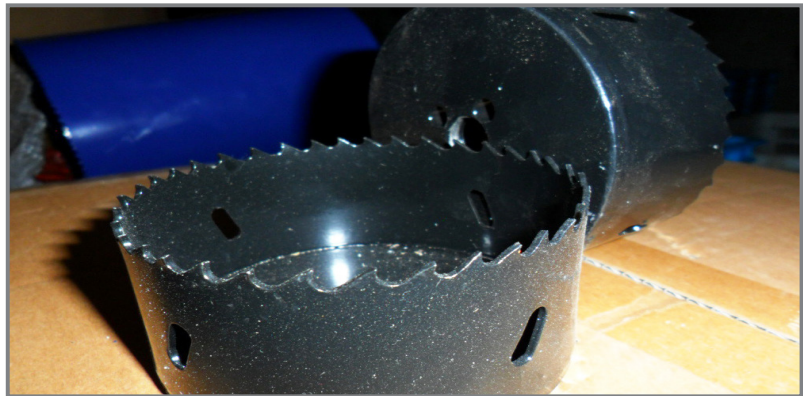
Key, tape measure, steel Baotou, file, pruning scissors, rolling shutter door spring,



Mainly Steel Grade : 65Mn,C50,SK5,SK4,SK2,C67S,C75,SUM23,11SMn30

■ 切割工具 CUTTING TOOLS

美工刀片，模切刀，刀模钢，圆锯片，双金属锯条，链锯，剃须刀，开孔器
Art blade, die cutter, die steel, circular saw blade, bimetal saw blade, Hole opener



Mainly Steel Grade : C60,C75,SK5,SK4,75Cr1,D6A,X32,68CrNiMo3-3,8660
45Mn,51CrV4,58CrV4,SKS51,75Ni8,SKS7,420J2,3Cr13, 6Cr13

■ 传动系统 POWERTRAIN

扶梯链，汽车链，农机链，摩托车链条，工程机械链条

Escalator chain, automobile chain, agricultural machinery chain, motorcycle chain, construction machinery chain

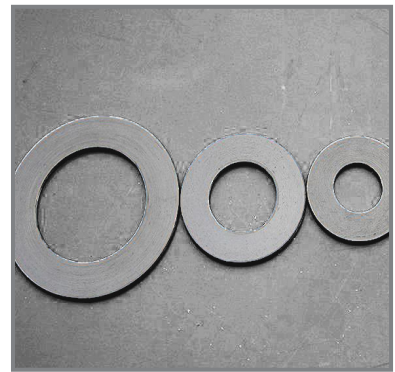
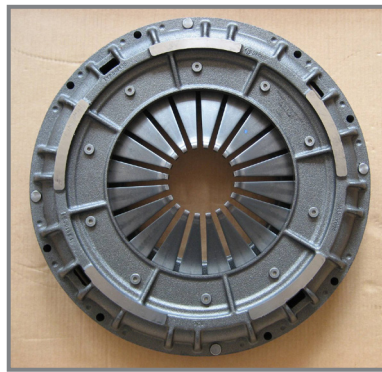


Mainly Steel Grade : C45,40Mn,45Mn,40Cr,35CrMo,42CrMo,51CrV4,4140

■ 弹簧配件 SPRING ACCESSORIES

弹垫，涡卷弹簧，卡簧，保险单弹簧，卷帘门弹簧，卷尺弹簧

Spring pad, scroll spring, snap spring, insurance policy spring, rolling shutter door spring, tape spring



Mainly Steel Grade : CK67,62Si2Mn,C75,C67S,SUP6,51CrV4,SUP10,SK4,1078

冷轧特种精密材料牌号

Types of Cold-Rolled Special Steel Strip

1. Carbon Steel and carbon steel for machine structural use

JIS	Chemical Composition (%)				
	C	Si	Mn	P	S
S45CM	0.42~0.48	0.15~0.35	0.60~0.90	0.030	0.035
S50CM	0.47~0.53	0.15~0.30	0.60~0.90	0.030	0.035
S60CM	0.55~0.65	0.15~0.30	0.60~0.90	0.030	0.035
S65CM(C67S)	0.60~0.70	0.15~0.30	0.60~0.90	0.030	0.035
S75CM	0.70~0.80	0.15~0.30	0.60~0.90	0.030	0.035

2. Carbon Tool Steel

JIS	Chemical Composition (%)				
	C	Si	Mn	P	S
SK120M(SK2M)	1.10~1.30	0.35	0.50	0.030	0.030
SK95M(SK4M)	0.90~1.00	0.35	0.50	0.030	0.030
SK85M(SK5M)	0.80~0.90	0.35	0.5	0.03	0.03

3. Alloy Tool Steel

JIS	Chemical Composition (%)						
	Si	Mn	P	S	Cu	Ni	Cr
SK55M	0.35	0.5	0.030	0.030	0.25	0.70~1.30	0.20~0.50
SKS51M	0.35	0.5	0.030	0.030	0.25	1.30~2.00	0.20~0.50

4. Structural-Use Alloy Steel

JIS	Chemical Composition (%)								
	C	Si	Mn	P	S	Cu	Ni	Cr	Mo
SCr440	0.38~0.43	0.15~0.35	0.60~0.85	0.030	0.030	0.30	0.25	0.90~1.20	
SCM435M	0.33~0.38	0.15~0.35	0.60~0.85	0.030	0.030	0.30	0.25	0.90~1.20	0.15~0.30
SCM440M	0.38~0.43	0.15~0.35	0.60~0.85	0.030	0.030	0.30	0.25	0.90~1.20	0.15~0.30
SCM415M	0.13~0.18	0.15~0.35	0.60~0.85	0.030	0.030	0.30	0.25	0.90~1.20	0.15~0.30

5. Spring Steel

JIS	Chemical Composition (%)							
	C	Si	Mn	P	S	Cu	Cr	V
SUP6M	0.55~0.65	1.50~1.80	0.70~1.00	0.035	0.035	0.30		
SUP9M	0.50~0.60	0.15~0.35	0.65~0.95	0.035	0.035	0.30	0.65~0.95	
SUP10M	0.45~0.55	0.15~0.35	0.65~0.95	0.035	0.035	0.30	0.80~1.10	0.15~0.25

6. High-Carbon Chromium Bearing Steel

JIS	Chemical Composition (%)							
	C	Si	Mn	P	S	Cr	Cu	Mo
SUJ2	0.95~1.10	0.15~0.35	0.5	0.025	0.025	1.30~1.60	0.25	0.08

江阴市美途精密材料有限公司

地址：江阴市长泾镇花园路100号

电话：+86-510-80683069 传真：+86-510-80683869

Jiangyin Mitoo Precise Co.,Ltd

Address: NO.100 Huayuan Road,Changjing Town,

Jiangyin City, Jiangsu Province,China

Tel: +86-510-80683069 FAX: +86-510-80683869

Email : sales@mitoo-precise.com

Website: www.mitoo-precise.com