



RRD-Cleanpro

Clean Room Airtight Rapid Door

Original design Tailor-made for clean rooms

A PROFESSIONAL SUPPLIER OF ALL-IN-ONE SOLUTION FOR INDUSTRIAL DOORS



SHANGHAI KENVO DOOR CO.,LTD

Address: Taowan Road, Industrial park of Shaxi Town,
Taicang city, Jiangsu province, China, 215421

Website: www.shkenvo.com

Email: info@shkenvo.com

Tel: +86 512 53218876

Whatsapp/Wechat: +86 13601843464



For industry of pharmaceutical, electronics, food and laboratory, clean rooms are strictly required to be dust-free and keep room air pressure level. In clean room projects, the mostly used automatic doors are ordinary pvc high speed door which are not specially designed or modified for clean room standards. Thus such regular rapid doors will have some hidden adverse effects for maintaining clean room level, which are not seen by clean room builders and users.

Kenvo develops tailor-made pvc rapid doors specially for clean room application, with consideration of ISO clean room norms and professional feedback from expertise clean room builders.



(Scan QR code to watch video)

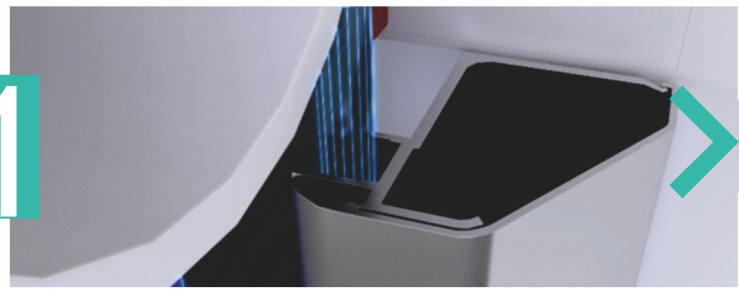


Super Air-tightness

Isolate air leakage Maintain air pressure
Minimize air flow volume



1



Side track is zipper-groove structure. Door curtain is jointed with PE plastic groove through movable soft PU strip, achieving zero-gap seal at two sides.

2



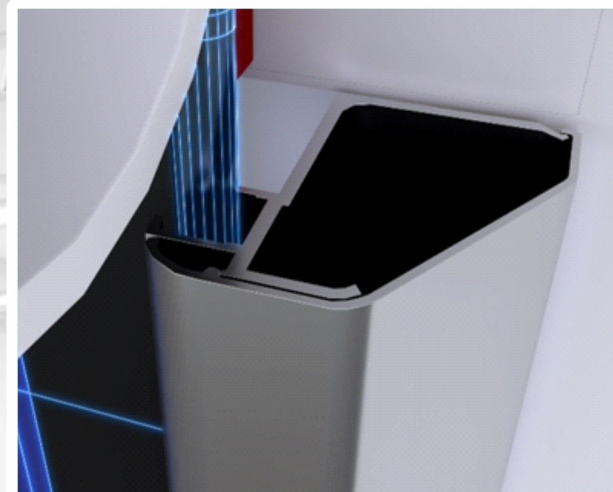
A full-length D-shape seal is used to eliminate gap between door backward and top lintel

3

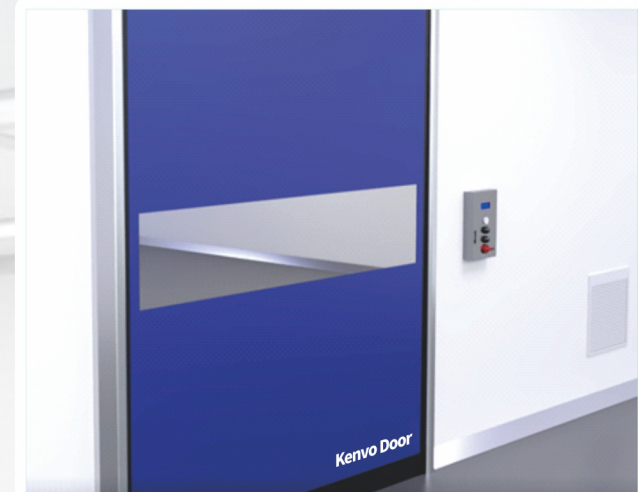


Soft bottom part, touching ground floor more flexible and tight

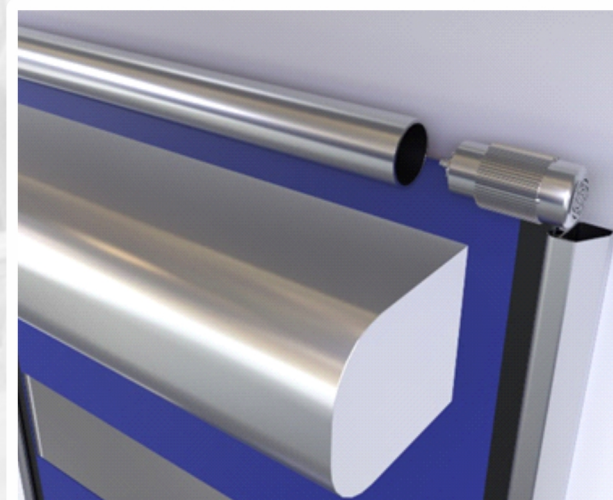
Ingenious Dust-proof and Easy-to-clean Design



Top cover and side track are made into circular arc shape, no any rectangular corner, making it dust-proof and easy-to-clean.



Smooth pure plane curtain, no aluminum bars as seen in regular rapid doors, eliminating corners and joints to reduce dust detention.



Motor is hidden inbuilt in top roller tube, no exposed motor cover, reducing dust-detention areas.



Safety photo sensor is hidden inbuilt in side tracks, rather than fixed outside with exposed cover at the front, reducing dust-detention areas.

All aluminum structure Avoid rusting completely

Top hood cover and side tracks are all made from anodized treated aluminum profile.



Delicate slim Elegant round design Premium technique

Beauty of Industrial Design Art



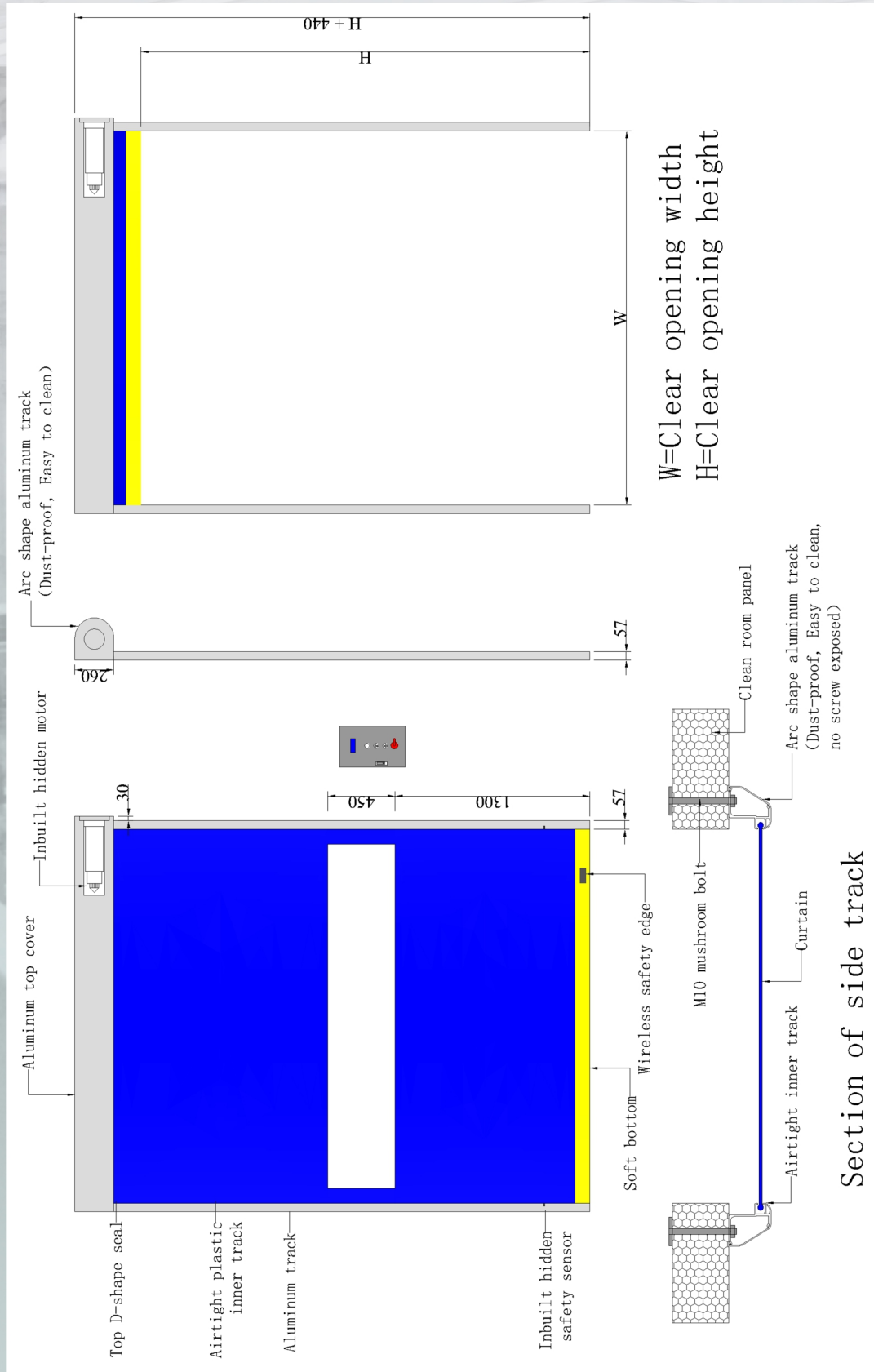
- Motor inbuilt into top roller tube, saving side space and making door body compact.
- Safety photo sensor inbuilt in two side tracks, rather than exposed at the front, making it more integrated.
- Slim side tracks formed by one-time extrusion, with width only 57mm, no need big space.
- Top cover and side tracks are round arc shape, surface treated by anodizing, in harmony with clean room surroundings.

RRD-Cleanpro Clean Room Airtight Rapid Door Technical Data Sheet

Specifications	Parameter
Max Size	W4000mm*H5000mm
Running Speed	Opening 1.5m/s, Closing 0.8m/s (speed adjustable)
Side track and Top cover	Side tracks: 57mm*57mm*3mm, one-time pressing extrusion aluminum profile+ PE plastic inner track, round arc shape Top cover: aluminum material, round arc shape Surface treatment: anodized
Drive Motor	Inbuilt tubular servo technology motor, hidden in top roller tube Power supply: 1-phase 220±10V, 50/60HZ; Power: 750W/1500W Driving mechanism: aluminum tube roller
Control Panel	Servo technology closed-loop control, realizing soft start and soft stop. Various parameters adjustable: Running speed, Running limit position, Auto-close interval time, Auto/Manual modes. Inbuilt function: interlocking, Signal-interacting with PLC, conveyor or air shower
Operation Device	Standard: wall-mounted control buttons at both sides Optional: Touchless hand detector, Touchless foot detector, Motion radar sensor, Loop vehicle detector, Pull-cord switch, Remote control
Safety Device	1.Inbuilt safety photo sensor 2.Wireless safety edge sensor
Curtain	PVC fabric curtain, double-surface coating treatment, Self-cleaning, Anti-static, Dust-proof. Thickness: 1.2mm for color fabric, 1.5mm for clear window fabric. Fire retardant grade: B1. Optional Colors: Blue-RAL5002 Yellow-RAL1003 Red-RAL2004 Grey-RAL7042 White-RAL9003 Full clear



Structure Drawing



RRD-cleanpro Clean Room Airtight Rapid Door

Various models of High Speed Doors

Match your diverse needs for different projects



1. RRD-clean Clean Room Airtight Rapid Door

Only difference from RRD-cleanpro is equipped with regular motor which is outside fixed. Its price get lower while keeping high grade performance.



Clean Room Airtight Door
RRD-cleanpro

(Scan QR code to watch video)



2. RRD-STD Standard Rapid Door

It is the type already widely known and used by all clean room contractors. It can meet basic needs of clean room standards, with lowest price.



Standard Rapid Door
RRD-STD

(Scan QR code to watch video)



3. RRD-ZIP Zipper Type Rapid Door

It is with excellent airtightness, dust-proof and easy-to-clean performance like RRD-clean, which is better than standard rapid door RRD-STD. At the same time, it can be used for big size door openings like frequent forklift traffic area.



Zipper Type Rapid Door
RRD-ZIP

(Scan QR code to watch video)

- (As a standard, all models of Kenvo rapid doors are supplied with interlock, signal interacting, conveyor interacting, and air shower interacting function)