

PKL PPC 610H
3-Part Auto Hematology Analyzer

Parameters	21 reportable parameters: WBC, Gran#, Lym#, Mid#, Gran%, Lym%, Mid%, RBC, HGB, HCT, MCV, MCH, MCHC, RDW-SD, RDW-CV, PLT, MPV, PDW, PCT, P-LCR, P-LCC
Principles	Impedance method for WBC, RBC and PLT test Cyanide free colorimetry for HGB test
Test mode	Whole blood, capillary blood and pre-diluted modes
Test volume	9µL
Throughput	Up to 60 tests per hour
Repeatability	WBC: ≤2.0% (7.00-15.00×10 ⁹ /L) ≤3.5% (4.00-6.90×10 ⁹ /L) RBC: ≤1.5% (3.50-6.50×10 ¹² /L) HGB: ≤1.5% (100-180g/L) MCV: ≤0.5% (70.0-110.0fL) PLT: ≤4.0% (150-500×10 ⁹ /L) ≤5.0% (100-149×10 ⁹ /L)

Linearity range	WBC: 0.00-300×10 ⁹ /L RBC: 0.00-8.50×10 ¹² /L HGB: 0-250g/L PLT: 0-3000×10 ⁹ /L HCT: 0.0-67%
Printout	Internal printer
Display	10.4 inches TFT touch screen
Storage	Up to 50,000 records
Interface	4 USB ports, 1 LAN port
Power requirement	100V-240V~, 50/60Hz, ≤200VA
Net weight	26kg
Dimension	362mm*427mm*470mm

PKL
POKLER ITALIA

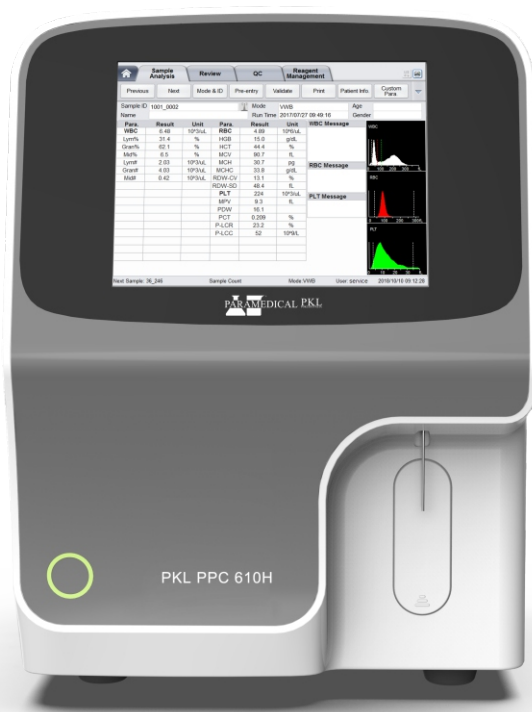
PKL PPC 610H
3-Part Auto Hematology Analyzer



Paramedical s.r.l
Via Antonio Amato n.24/26 84131 Salerno Italy.
TEL: 0039 089 385027
FAX: 0039 089 3854479
amministrazione@paramedical.it
www.paramedical.it

The product specifications are changed without notice, the latest technical data and test results shall prevail.

PKL PPC 610H
3-Part Auto Hematology Analyzer



Friendly To End Users

- ✔ Small footprint & built-in lyse
Make space-use more efficient in lab
- ✔ 10.4" touch screen
Easy to operate and read
- ✔ Clear and intuitive interface
Click and test, easy to go



Powerful Data Management System

- ✔ 50,000 records storage
- ✔ International standard transfer protocol
- ✔ USB & LAN ports for data output



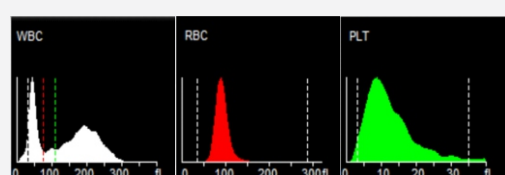
Affordable Care

- ✔ Less reagent cost making bloodworks affordable
- ✔ 2 reagents only, lyse inside



Less Maintenance

- ✔ Imported key parts and integrated design
- ✔ Strict international quality control system
- ✔ One key error clear maintenance
- ✔ Experienced technical team for your smooth start



- **Parameters**
21 reportable parameters: WBC, Gran#, Lym#, Mid#, Gran%, Lym%, Mid%, RBC, HGB, HCT, MCV, MCH, MCHC, RDW-SD, RDW-CV, PLT, MPV, PDW, PCT, P-LCR, P-LCC
- **Throughput**
Up to 60 tests per hour
- **Principle**
Impedance method, Colorimetry (Cyanide-Free)