



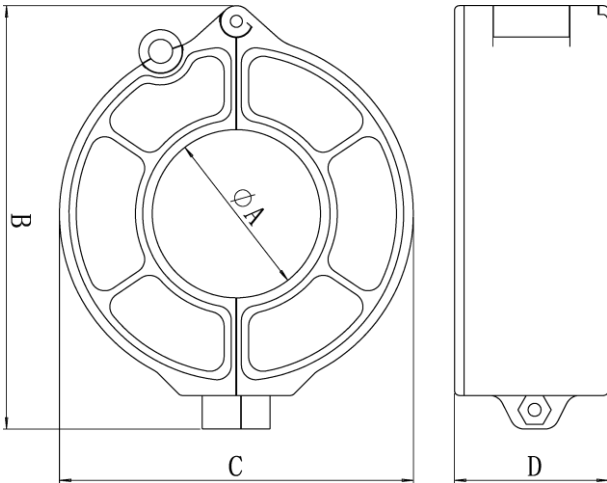
## TYKCT-YR

### Product features

- Split core design, low core loss;
- Beautiful appearance and small size;
- mA/mV signal output, high precision;
- Outdoor waterproof, waterproof grade IP67;
- There is no need to disconnect the bus, and the installation is convenient;
- Anti falling screw opening and closing structure, convenient opening and closing;



### Overall dimension

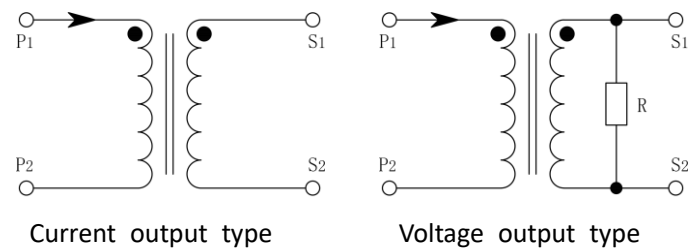


Product model	A (mm)	B (mm)	C (mm)	D (mm)
TYKCT-YR15	15	59	45	28
TYKCT-YR25	25	74.5	60	30
TYKCT-YR35	35	88	73.6	32
TYKCT-YR50	50	115	100	35

### Electrical characteristics

- Maximum voltage of equipment: 0.66kV
- Rated input: 0~1000A
- Rated output: 5A/1A/mA/mV
- working frequency: 50Hz~60Hz
- working temperature: -40℃~+85℃
- Relative humidity: ≤90% at 40℃
- Power frequency withstand voltage: 3000V/1mA/1min(50Hz)
- Insulation resistance: DC500V/1000MΩ

### Schematic diagram



### Technical parameter

(rated secondary current mA/mV)

Product model	TYKCT-YR15	TYKCT-YR25	TYKCT-YR35	TYKCT-YR50
Rated primary current	0~150A	0~300A	0~600A	0~1000A
Maximum continuous current	180A	360A	720A	1200A
Load resistance	RL=10Ω	RL=10Ω	RL=10Ω	RL=10Ω
Accuracy class	0.2/0.5s/0.5 Level	0.2/0.5s/0.5 Level	0.2/0.5s/0.5 Level	0.2/0.5s/0.5 Level