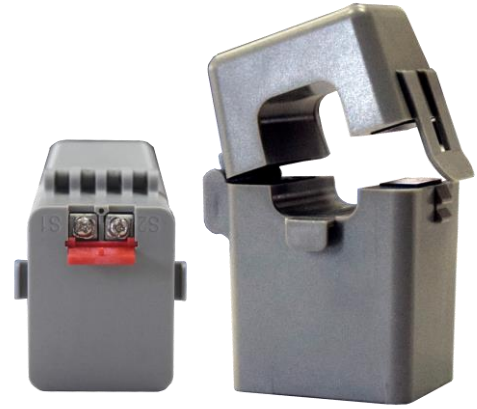




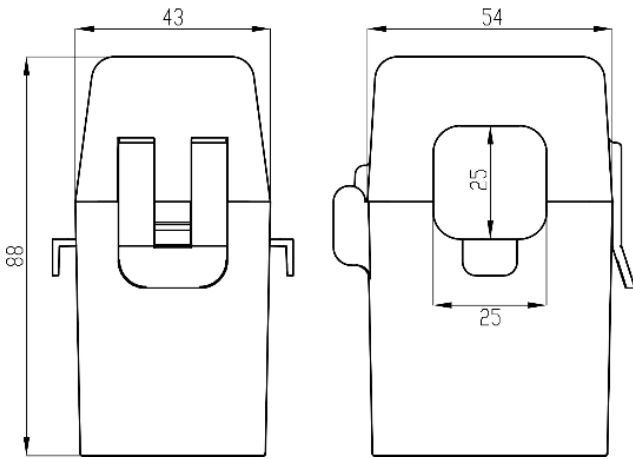
**TYKCT-YJ25**

**Product features**

- Terminal output, flexible wiring;
- Beautiful appearance and small size;
- Split core design, small core loss and high precision;
- There is no need to disconnect the bus, and the installation is convenient;
- Snap type opening and closing structure, convenient opening and closing;



**Overall dimension**



**Electrical characteristics**

- Maximum voltage of equipment: 0.66kV
- Rated input: 0~300A
- Rated output: 5A/1A/mA/mV
- working frequency: 50Hz~60Hz
- working temperature: -40℃~+85℃
- Relative humidity: ≤90% at 40℃
- Power frequency withstand voltage : 3000V/1mA/1min(50Hz)
- Insulation resistance: DC500V/1000MΩ

**Technical parameter**

(rated secondary current 5A/1A)

Product model	Primary current (A)	load (VA)		
		Level 0.5S	Level 0.5	Level 1.0
TYKCT-YJ25	50	/	/	1
	100	/	1	2.5
	150	1	1.5	2.5
	200	1.5	2.5	5
	250	2.5	3.75	5
	300	3.75	5	7.5

(rated secondary current mA/mV)

Product model	TYKCT-YJ25
Rated primary current	0~300A
Maximum continuous current	360A
Rated secondary current	0~100mA
Rated secondary voltage	0~1V
Load resistance	0~10Ω
Accuracy class	0.5s/0.5 级

**Schematic diagram**

