

INITIATE FROM DEMANDS
COMMIT TO QUALITY



NANJING CHINYLION METAL
PRODUCTS CO., LTD

ADD.: No. 751 Dixiu Road Jiangning Street, Nanjing, China

TEL: 025-86101499

FAX: 025-86101466

EMAIL: sales@chinylion.com

WEBSITE: www.chinylion.com



NANJING CHINYLION METAL PRODUCTS CO., LTD



COMPANY PROFILE

Nanjing Chinylion Metal Products Co., Ltd. was established in 2017, with a registered capital of 5 million yuan, production area of about 5,000 square meter, and 12 production lines. As a modern enterprise specialized in manufacturing and exporting storage rack, cold bending steel, steel structure products, committing to modern logistics technology and product research, development, design, production, installation and service, Chinylion was awarded ISO9001, ISO4001 and ISO45001. After five years of hard work and growing, Chinylion has become a high-tech enterprise integrating intelligent logistics solutions and storage system.

CONTENTS

SECTION STEEL

- 02/C Slotted Steel
- 03/Channel Steel – Equal
- 03/Channel Steel – Unequal
- 04/M Type Steel
- 04/Outer Crimped Channel Steel
- 04/Guide Rail Groove
- 05/Photovoltaic Bracket
- 05/Slope Steel
- 05/Sigma Beam
- 06/Special Shaped Column
- 06/Angle Steel
- 07/Z type Steel Sheet
- 08/U Type Steel Sheet
- 08/Trench Steel Sheet Pile

RACKING SYSTEM

- 09/ APPLICATION
 - 11/Medium Duty shelving
- 11/ Conventional Rack
 - 12/Pallet Rack
 - 14/Cantilever Rack
 - 16/Carlon Flow Rack
 - 18/VAN Rack
- 20/ High Density Rack
 - 20/Radio Shuttle Rck
 - 22/Electric Mobile Rack
 - 24/Drive-in Rack
 - 26/Push Back Rack
 - 28/Gravity Roller Pallet Flow Rack
- 30/ Steel Platform Mezzanine
 - 30/Steel Platform
 - 32/Mezzanine
- 34/ Other Products
 - 34/Storage Cage
 - 35/Stacking Rack
 - 36/Steel Pallet



C SLOTTED STEEL

C slotted steel is widely applicable to roof formwork and wall strip for industrial plant, wholesale market, stereo warehouse, airport, exhibition hall, station and so on.

• SIZE

40 × 24 × 12 × 2.0~2.5	160 × 50 (60) × 20 × 2.0~8.0
80 × 40 × 15 × 2.0~3.0	180 × 60 (70) × 20 × 2.0~8.0
100 × 50 (60) × 20 × 2.0~6.0	200 × 60 (70) × 20 × 2.0~8.0
110 × 50 (60) × 20 × 2.0~6.0	250 × 60 (250) × 25 × 2.0~8.0
120 × 50 (60) × 20 × 2.0~6.0	280 × 60 (250) × 20 × 2.0~8.0
140 × 50 (60) × 20 × 2.0~6.0	300 × 60 (250) × 20 × 2.0~8.0
150 × 50 (60) × 20 × 2.0~6.0	400 × 250 × 25 × 2.0~8.0

CHANNEL STEEL – EQUAL

Channel steel is mainly applied for building structure, curtain wall engineering, mechanical equipment and vehicle manufacturing.



M TYPE STEEL

M type steel is mainly used for building structure and vehicle manufacturing

OUTER CRIMPED CHANNEL STEEL



Outer crimped channel steel is commonly applicable to elevator, racking, engineering machinery, agricultural machinery and so on.

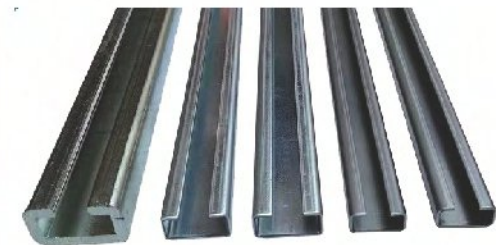
CHANNEL STEEL – UNEQUAL

Channel steel is mainly applied for building structure, curtain wall engineering, mechanical equipment and vehicle manufacturing.



GUIDE RAIL GROOVE

Guide Rail groove is mainly used in construction machinery manufacturing and assembly line production equipment.



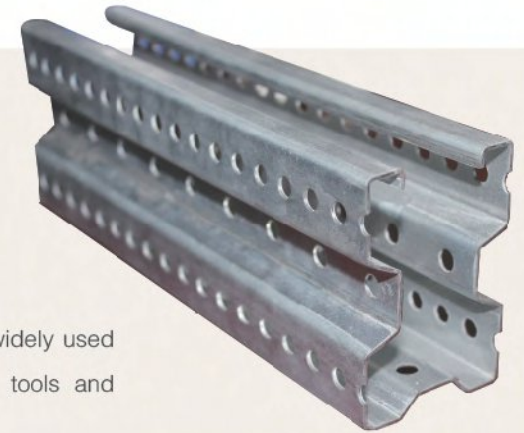
PHOTOVOLTAIC BRACKET

Photovoltaic bracket is mainly applicable to distributed power stations, rooftop power stations, household, commercial and other fields in the solar photovoltaic industry.



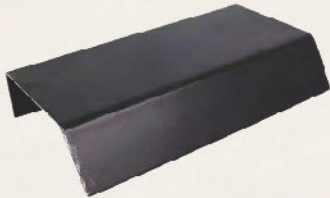
SPECIAL SHAPED COLUMN

Special shaped column is widely used in various structural parts, tools and mechanical parts.

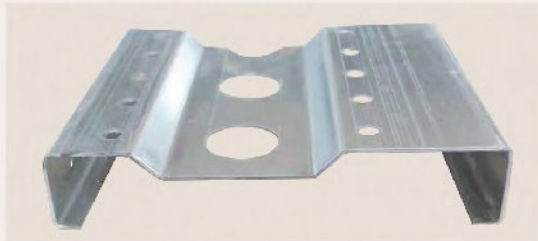


SLOP STEEL

Slop steel is commonly used for vehicle manufacturing.



SIGMA BEAM



Sigma steel beam is commonly used as the secondary beams for steel platform.

• SIZE

200 × 50 × 20 × 2.0 ~ 2.5

250 × 60 × 20 × 2.0 ~ 3.0

300 × 60 × 20 × 2.0 ~ 3.0



ANGLE STEEL

Angle steel is widely used in various building structures and engineering structures.



Z TYPE STEEL SHEET

Z type steel sheet is widely in application of roof formwork and wall strip for industrial plant, wholesale market, stereo warehouse, airport, exhibition hall, station and so on.

· SIZE

40 × 24 × 12 × 2.0~2.5	160 × 50 (60) × 20 × 2.0~8.0
80 × 40 × 15 × 2.0~3.0	180 × 60 (70) × 20 × 2.0~8.0
100 × 50 (60) × 20 × 2.0~6.0	200 × 60 (70) × 20 × 2.0~8.0
110 × 50 (60) × 20 × 2.0~6.0	250 × 60 (250) × 25 × 2.0~8.0
120 × 50 (60) × 20 × 2.0~6.0	280 × 60 (250) × 20 × 2.0~8.0
140 × 50 (60) × 20 × 2.0~6.0	300 × 60 (250) × 20 × 2.0~8.0
150 × 50 (60) × 20 × 2.0~6.0	400 × 250 × 25 × 2.0~8.0

U TYPE STEEL SHEET

U type steel sheet is widely used for building large bridges, highway bridges and so on.



TRENCH STEEL SHEET PILE



Trench steel sheet pile is widely used in highway construction.

APPLICATION



CONVENTIONAL RACK

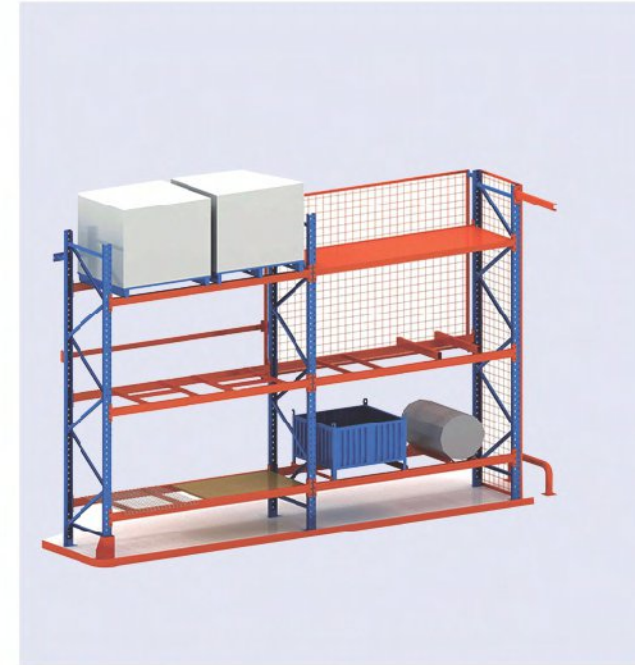
MEDIUM DUTY SHELVING



Medium duty shelving is suitable for the hand loaded storage of bulky goods, consisted of frames, beams and shelf panels.

PALLET RACK

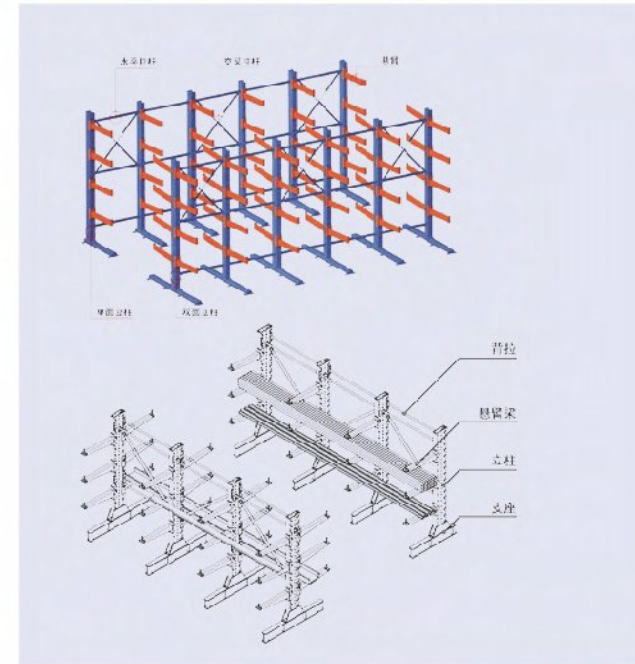
Pallet rack is the most common type, which allows for the storage of palletized materials in horizontal rows with multiple levels, increasing storage density of the stored goods. Forklift trucks are usually required to place the loaded pallets onto the racks for storage.





CANTILEVER RACK

Cantilever rack consists of column, base, arm and bracing. It is easy to install and flexible to store long, bulky and over-sized loads like timber, pipes, trusses, plywoods and so on.





CARTON FLOW RACK

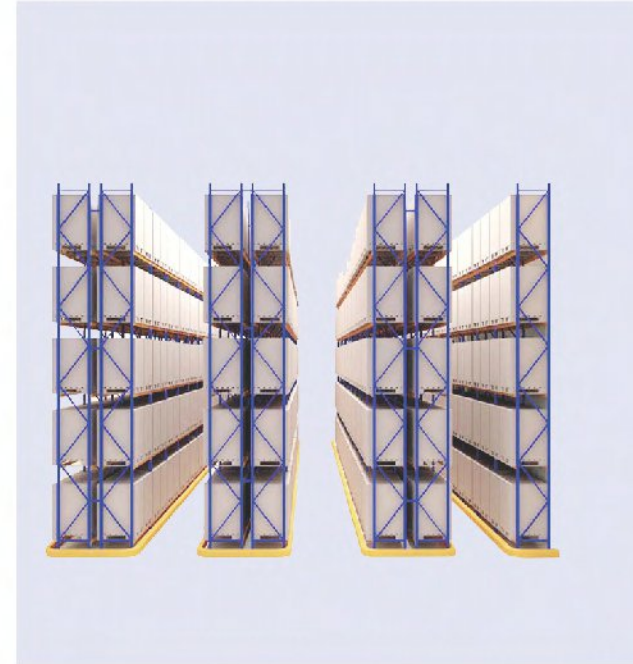
Carton Flow Rack is commonly installed for machine tool storage by manufactures and order picking process by logistics centers. It contains a rack structure and dynamic flow rails. The flow rails are set at an engineered pitch.





VNA RACK

Very Narrow Aisle (VNA) rack is a special kind of pallet rack, leaving narrow aisle for special forklifts, increasing the storage density.

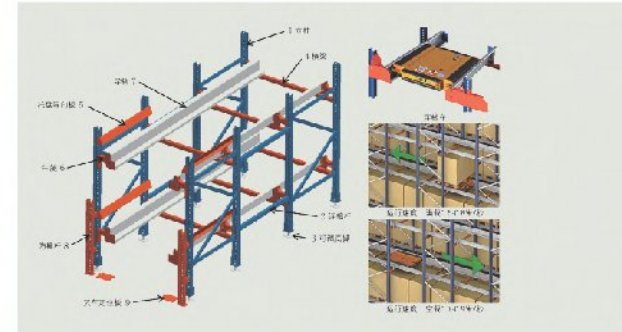




HIGH DENSITY RACK

RADIO SHUTTLE RACK

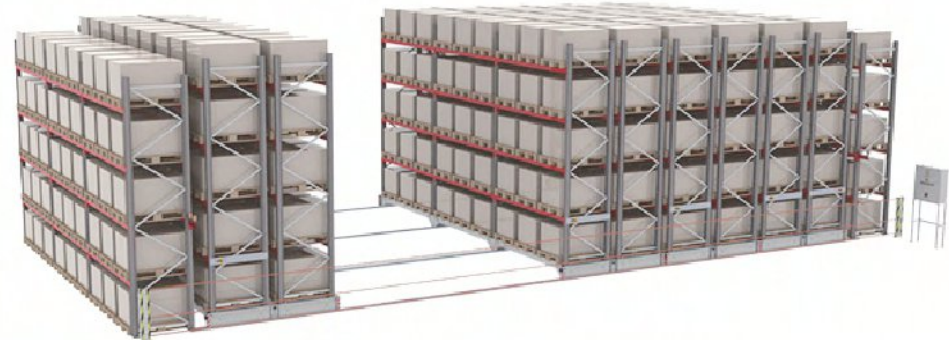
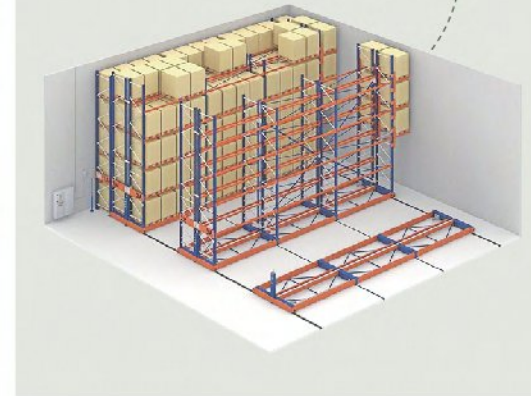
The radio shuttle rack system is a high-density storage system that uses shuttles to automatically carry loaded pallets on the rail tracks in the rack. The forklift doesn't need to be driven in the racks or aisles between racks. Shuttle can work continuously while operator handles the pallet with forklift.





ELECTRIC MOBILE RACK

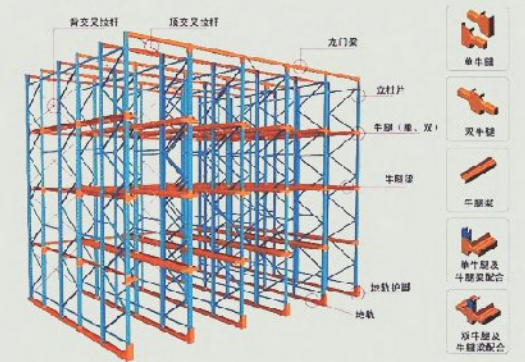
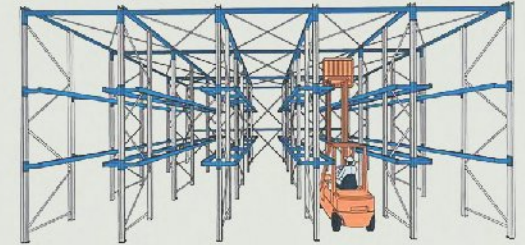
Electric mobile rack system is a high-density system for optimizing the space in the warehouse, where the racks are put on mobile chassis guided through tracks on the floor, although the advanced configuration can work without tracks.





DRIVE-IN RACK

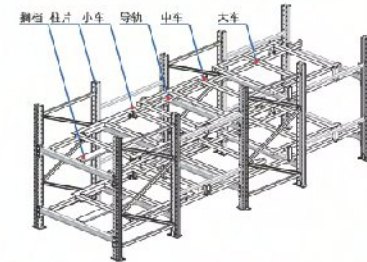
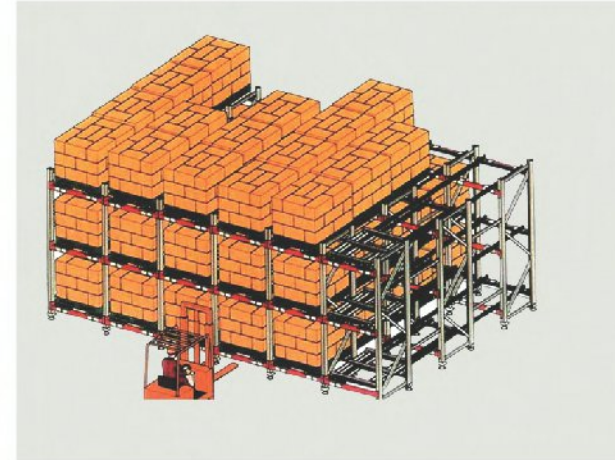
Drive-in rack makes maximum use of horizontal and vertical space by eliminating work aisles for forklift trucks between racks, forklifts enter the storage lanes of drive-in racks to store and retrieve pallets.





PUSH BACK RACK

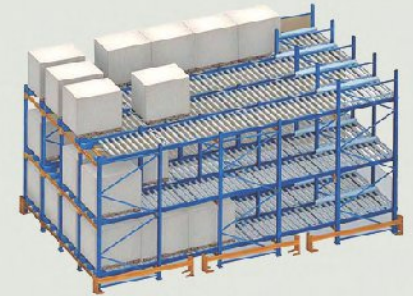
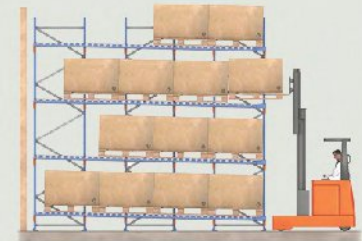
Push back rack is a right system that maximizes storage space by reducing aisles for forklifts and saving operators' time running in the racking lane like what happens in drive-in racks, increasing the storage space and saving a lot of working time.





GRAVITY PALLET FLOW RACK

Pallet flow rack is the best option when the pallets need to be moved smoothly and quickly from one side to the other side without assistance of forklift and where first in, first out (FIFO) is required.

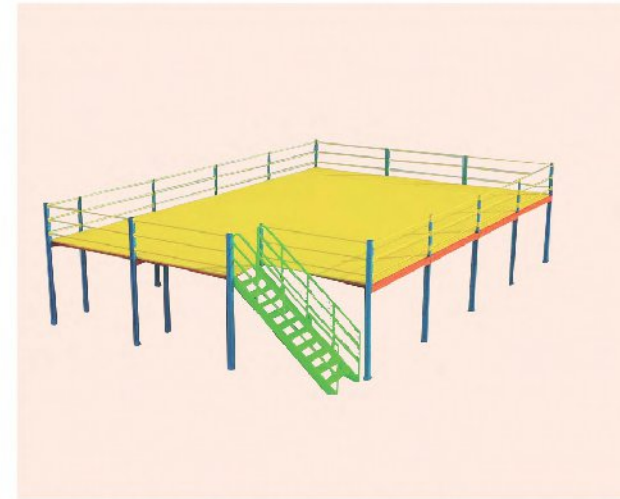




STEEL PLATFORM MEZZANINE

STEEL PLATFORM

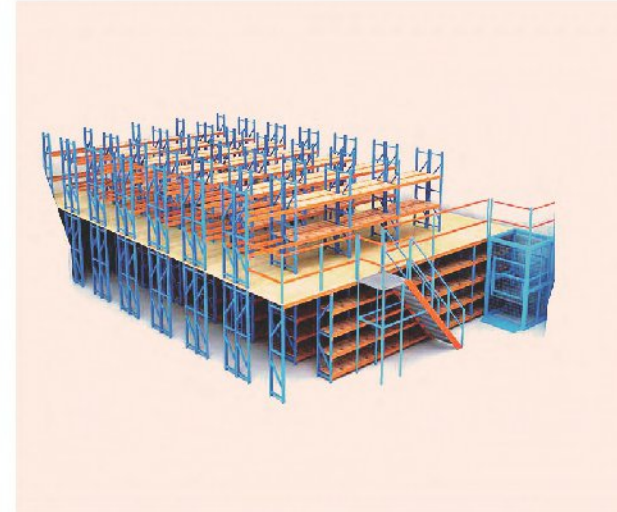
Steel platform takes advantage of vertical volumetric space in the warehouse with strong structure, composing of column, main beam, secondary beam, floor, staircase and handrail.





MEZZANINE

Mezzanine takes advantage of vertical volumetric space in the warehouse, and uses medium-duty or heavy-duty rack as the main part, and solid steel checkered plate or perforated plate as the flooring.



OTHER PRODUCTS

STORAGE CAGE



STACKING RACK



STEEL PALLET

