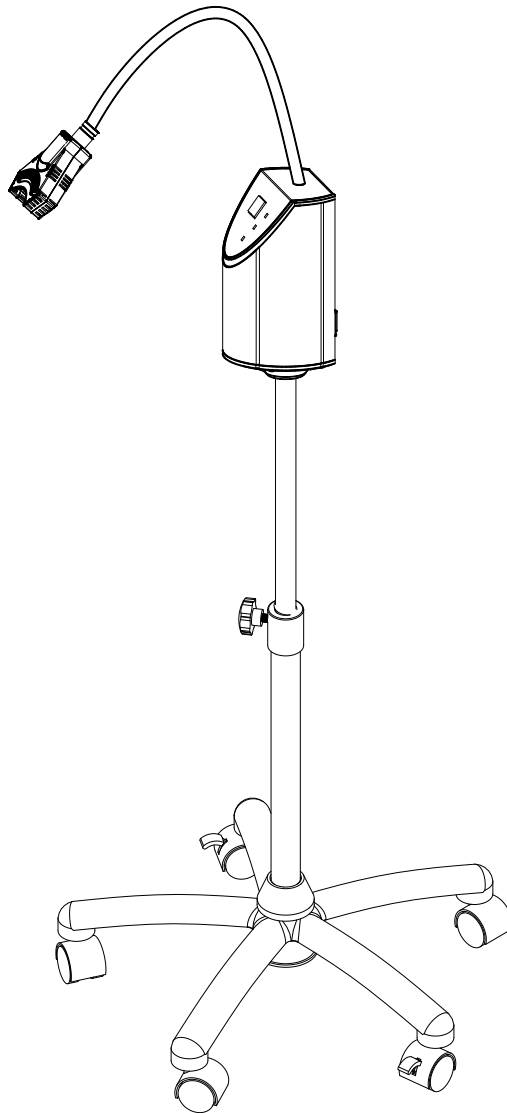


Teeth Whitening Light

Crystal 1200



Instructions For Use

ROLENCE ENTERPRISE INC.



No. 18-3, Lane 231, Pu Chung Rd., Chungli, Taoyuan 32083, Taiwan

Tel: +886 3 4631999; Fax: +886 3 4631997; www.rolence.com.tw

Table of Content

- 1. ADDITIONAL SYMBOLS**
- 2. SAFETY**
- 3. INDICATION/INTEND USE**
- 4. SPECIFICATION**
- 5. OPERATION ENVIRONMENT**
- 6. TRANSPORTATION AND STORAGE ENVIRONMENT**
- 7. CONTENT**
- 8. INSTALLATION**
- 9. SYSTEM CONTROL**
- 10. OPERATION**
- 11. SYSTEM CARE**
- 12. LIABILITY**
- 13. WARRANTY**

1. Additional symbols

Attention, Consult Accompanying Documents	
 <p>MEDICAL EQUIPMENT-Extroaral Curing Light WITH RESPECT TO ELECTRIC SHOCK, FIRE AND MECHANICAL HAZARDS ONLY IN ACCORDANCE WITH UL60601-1 AND CAN/CSA C22.2 NO.601.1</p>	

2. SAFETY

PLEASE NOTE!

Prior to installation and start-up of the unit, carefully read the instructions provided herein!

As with all technical devices, the proper function and safe operation of this unit depend on the user's compliance with the safety recommendations presented in these operating instructions.



CAUTION: It is important to observe the following precautions and procedures:

- Do not place light directly on or toward unprotected gingiva or skin.
- Adjust your curing techniques in according with the increase in curing energy.



CAUTION: Persons with a history of photosensitivity or who are using photosensitizing drugs should not be exposed to light from this unit.



CAUTION: This equipment is not suitable for use in the presence of flammable anesthetic mixtures with air or nitrous oxide.



CAUTION: Crystal 1200 produces high intensity light. Unprotected gingiva or skin shall not be exposed to the light directly. Do not look directly at the light emitted from Crystal 1200. Please wear protective goggle supplied with this device while using "Crystal 1200".

3. INDICATION/INTEND USE:

Crystal 1200 produces light with wavelength between 390nm ~ 490nm, and is used for activation and polymerization of light cured material by dental professional. It's illuminator is specially designed for extraoral curing.

4. SPECIFICATION:

- Wavelength Range: 390nm - 490nm
- Light Output power: Up to 1200mW
(Over 90% Output contributed by 440nm - 490nm Wavelength)
- Operating Voltage: 100-240 VAC, 50/60 Hz
- Power Input: 30W, Max.
- Fuse: T250V, 0.5A
- Unit Weight:
Crystal 1200: 1.88 Kg
Cart: 3.754 Kg
- Dimension (Without Cart):
L * W * H = 12.8 cm * 10.1 cm * 81.2 cm
- Maximal Working Radius: 38 cm
- Uniformity of Light Output: Over 70% at 1mm ~ 10mm
from exposure area to illuminator.
- Equipment class: Class I (IEC601-1)
- Protection from ingress of liquids: None

5. OPERATION ENVIRONMENT:

- Ambient temperature: 10°C ~ +40°C
- Relative humidity: 30% ~ 75%
- Atmospheric pressure: 700hPa ~ 1060hPa

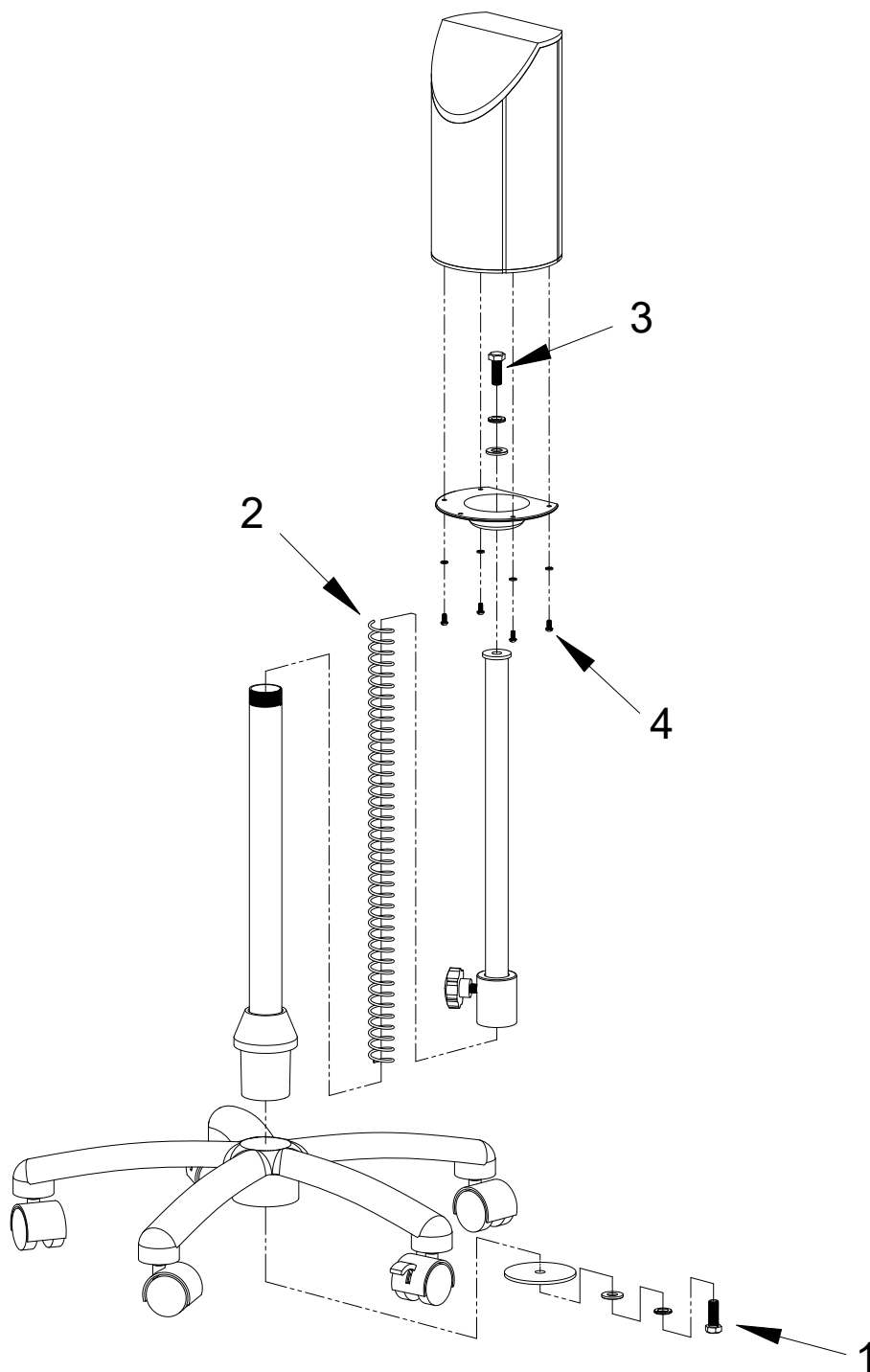
6. TRANSPORTATION AND STORAGE ENVIRONMENT:

- Ambient temperature: -10°C ~ +70°C
- Relative humidity range: 10% ~ 90%
- Atmospheric pressure: 500hPa ~ 1060hPa


7. CONTENT:


No.	Component	Quantity-unit
1.	Main Control Box unit with goose neck	1
2.	Stainless stand with wheel	1
3.	Protective eye goggle	1
4.	Power cord	1
5.	Spring for stand	1
6.	Main unit mounting base	1
7.	Fixing disk for stand	1
8.	M4x8 round-head screw	4
9.	M4 spring washer	4
10.	3/8"-1" hexagon screw	2
11.	M10 washer	2
12.	M10 spring washer	2


8. INSTALLATION:




9. SYSTEM CONTROL:

 : Turn on power at this end

 : Turn off power at this end

 : Turn on/off the light by pressing this lamp button.

 : Stop the time counting and temporarily turn off light by pressing this button.
Press this button again, will turn on the light and time will count continually.



: Use this button to preset the curing time. The increment is 1 minute, and the longest curing time is 20 minutes each cycle.

10. OPERATION:

1. Plug the power cord into the socket of the power system.
2. Turn on the power switch and the timer setting memory will be displayed on the “LED digital indicator”.
3. Bent the gooseneck tube to position illuminator toward the exposure area you want.
4. Depress timer setting to choose the working time you want if any.
5. Depress lamp switch to turn on the light for curing, and you will hear a short beeping. Buzzer will beep 3 times at 30 seconds before end of curing and the lamp will be turned off automatically when time is over.
While in curing process, you can depress the lamp switch again to stop the curing.
6. While in curing, you can depress “Pause” button to halt the curing. Light will be turned off and timer counting is stopped, the “LED Digital Indicator” will be blinking.
Depressing “Pause” button again, illuminator will continue the curing process, and timer is continuously counting and light is on again. The “LED Digital Indicator” will stop blinking.
7. Do not contact the patient and machine at the same time.
8. Unplug the power cord can disconnect device.

Note:

1. Follow manufacture’s direction for curing time on various material, Crystal 1200 is the tool to activate or polymerize the light cured material only. Dentist shall verify the working time before he use new package or new material.
2. The fan in illuminator will continue working 2 minutes after curing to ensure cooling.
Please make sure fan stopped before you turn off power.

11. SYSTEM CARE:

.....**CAUTION**.....

1. The unit shall be unplugged before cleaning and disinfecting the power unit and illuminator to prevent from electric shock.
2. To wash or spray the out surface of power unit and illuminator with water, cleanser and chemical disinfectant is not allowed for it will result electric shock and damage of inner circuit.
If this happens, please contact our dealer for inspection before use.
3. Crystal 1200 is not suitable for heat sterilization, such as autoclave and dry heat oven.

.....**CAUTION**.....

Please clean the unit between every patient's use. The cleaning consists of wiping the surface slightly with a cleansing solution and wiping with a dry cloth. The disinfecting consists of

wiping with a cloth slightly dampened with a Alcohol. Then wipe surface with water wet cloth and dry thoroughly including crevices.

Note:

Please consider using a FDA cleared barrier sheath to cover the illuminator, gooseneck tube and control panel at least. But please keep the cooling venting at illuminator open to assure its function proper.

.....**CAUTION**.....

Follow the national requirement to dispose unit.

12. LIABILITY:

Rolence considers itself responsible for the effects on safety, reliability and performance of this product only if:

- Assembly operations, extensions, re-adjustments, modifications or repairs are carried out by persons authorized by Rolence.
- The electrical installation of the relevant room complies with the requirements.
- The equipment is used in accordance with these instructions for use.

13. WARRANTY:

Rolence hereby warrants that for a period of one year from the date of purchase this instrument shall be free from defects in material and workmanship and will perform satisfactorily under normal use and service.

The warranty stated herein is the sole warranty applicable to Rolence products. Rolence expressly disclaims any and all other warranties expressed or implied, including warranties or merchantability or fitness for a particular use. Rolence's liability with prospect to its products expressly limited to the remedies set forth above. The remedies are the buyer's exclusive remedies. Rolence shall under no circumstances be liable for incidental or consequential damages.

EU authorized representative name and address



CMC Medical Devices & Drugs S.L.
C/ Horacio Lengo n18 ,C.P 29006, Málaga-Spain