

Doing



STANDING ON THE HIGH-END

18952859876 王 (Mr.Wang) ,15189160687 胡 (Mr.Hu)

Development Zone, Danyang City, Jiangsu Province, China

0511-86996785

doing@ dydoing. com

Micro hyperbaric oxygen chamber manual



- 0 1 Company Profile
- 0 2 Technology Core
- 0 3 Safety Note
- 0 4 Product Characteristics
- 0 5 Installation And Use
- 0 6 After-sales Service



Company Profile

Danyang Duoying is a modern company integrating R&D, production and sales. Introduce the new concept of hyperbaric oxygen therapy that is most respected by the international health industry today. While realizing the independent research and development of the new microbaric oxygen chamber, it has reached strategic partnerships with relevant institutions in various provinces and cities across the country in terms of prevention, health care, beauty, health care, and elderly care.

Since its establishment, the company has always adhered to the business philosophy of "keep improving, customer first", introduced advanced information and technology in the industry, scientific and rigorous management process, perfect manufacturing process, and strict quality control methods to ensure that it is provided to customers. Top quality products. To enable enterprises to maintain their competitiveness in fierce market competition and achieve rapid and stable development of enterprises.

We have a high-quality corporate talent with many years of experience in project implementation in the industry. Under the guidance of a scientific corporate philosophy, we have formed an elite team with great team spirit, vitality and strong execution ability. We have many years of experience in production and design, and are customer-oriented. The oxygen chamber is easy to operate, comfortable and healthy for oxygen inhalation, and is suitable for use in homes, health and beauty centers, plateau areas, and outdoor sports. The company adheres to the tenet of "service first". From R&D to production to sales, including the screening and evaluation of suppliers, the company strictly controls the quality of products in every link. "Providing customers with satisfactory services" is our goal. The customer's eternal promise, to provide our customers with a one-stop service for customizing home hyperbaric oxygen chambers!

High End

Focus on the field of medical devices, and strive to become a well-known medical device company with a good corporate image and brand reputation in the industry.

Safety

Quality-oriented, strict product life cycle quality management, and continuously meet the changing needs of customers and regulations.

Mission

Create wealth, repay the society, serve employees, and contribute to the cause of human health.



Company Core

Rigorous: Careful and Meticulous High Responsibility
Pay Attention to Details

Harmony: teamwork, active participation, healthy competition

Upward: continuous improvement, achievement orientation, and pursuit of excellence in the activity process

Technology at its core

Micro -pressure oxygen tanks surround oxygen and negative ions by pressing oxygen and oxygen, effectively transported to various organs of the human body through the breathing and microcirculation system, improve the tissue oxygen division, restore cell vitality, regulate the metabolic function, and enable each body to make each body each in the body The items can gradually balance, improve the storage of dissolved oxygen in the organ, can quickly alleviate the altitude response, assist the rehabilitation of chronic diseases and improve the sub -health state.



Plateau is a place where hypoxia, and the actual important factor that causes hypoxia is shortage of pressure. Due to the low atmospheric pressure on the plateau and low oxygen pressure, people who live on the plateau in the short term or long -term are easily acute altitude response, plateau pulmonary edema, and plateau brain edema due to hypoxia. Those with chronic discomfort can cause polymosis, plateau hypertension, plateau heart disease, etc.



After many clinical practice, micro -pressure oxygen therapy has played a good effect on rehabilitation therapy. The scope of medical treatment has spread to neuropathy, urgency, pediatrics, Kangfu Medicine, otolaryngology, and oncology. The micro -pressure oxygen cabin civilize the medical high - pressure oxygen cabin.

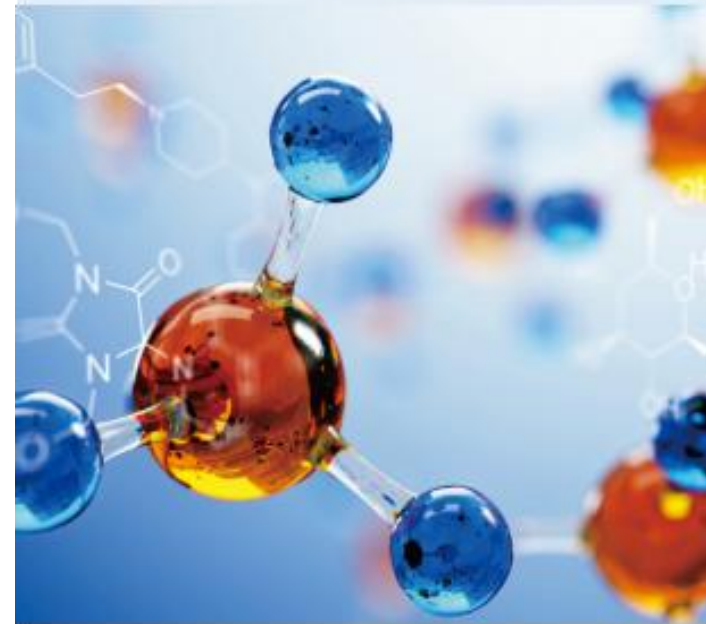


Maybe you have a beautiful heart, but you can't find a better way to become beautiful. So let microcontrusive oxygen therapy tell you that healthy beauty, from the inside out, create a healthy female physiological basis. The micro -pressure oxygen cabin is given a good square. Do you want to witness together?



Control System

The self -developed control system, mature and stable, simple operation, and display PM2. 5, temperature, oxygen concentration and negative ion parameters in real time, suitable for hardware and software oxygen compartment.



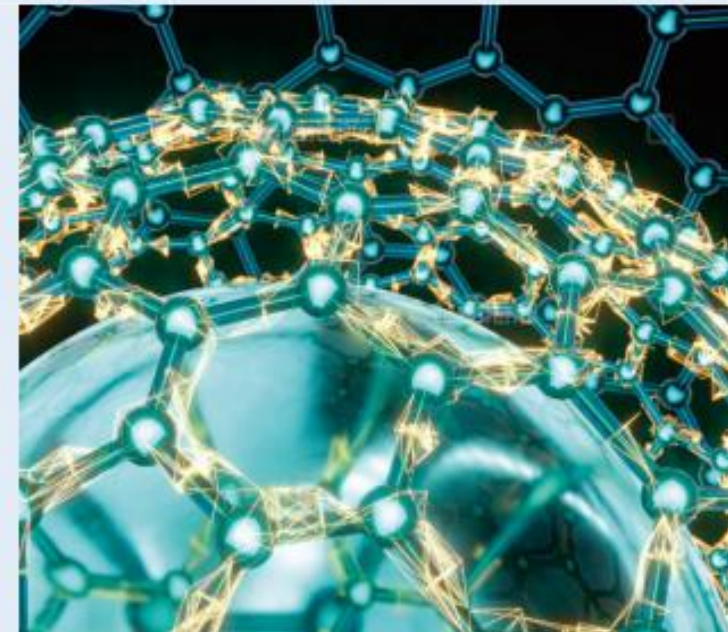
Molecular sieve

The use of high -efficiency molecular sieves to ensure higher oxygen concentration and service life.



Cabin

The aerospace -level TPU material is made of heat -coexisting to resist pressure and scratch and scratch; double -layer gas zipper, more convenient sealing is better.



Security considerations

Absolute taboo

- 1 Pregnancy (the first 3 months and the last 3 months) is forbidden to use.
- 2 It is forbidden to use if the blood pressure exceeds 160mmhg.
- 3 Patients with bullae, pneumothorax, and pulmonary hemorrhage are prohibited from using it.
- 4 Infectious diseases are not recommended.
- 5 When there is pressure in the cabin, it is forbidden to try to open the zipper.
- 6 It is forbidden to bring sharp objects, matches, lighters and other flammable items into the cabin.
- 7 It is forbidden to use in places with open flames, high temperature baking, and water and humidity.
- 8 If the zipper is stuck or deformed, please stop using it and contact us.



Precautions

- 1 Please touch the safety valve for each use to confirm that the safety valve exhausts normally.
- 2 After disinfection with ozone, ventilate for at least 1 hour before use.
- 3 Do not cover your ears to prevent eardrum damage caused by rising/falling pressure.
- 4 In non-emergency situations, do not open the manual valve suddenly and quickly, which will make the user pain in the ear.
- 5 The pressurization time is about 3 to 5 minutes, and the decompression time is about 1 to 2 minutes. Do not hold your breath, keep breathing normally.
- 6 When used indoors, the temperature in the cabin is about 2~5°C higher than room temperature.
- 7 Observe the frequency of use, preferably one to two times a day.



Special warning:

1. Before using this product, please read the instructions carefully.
2. This product is not used as medical equipment.
3. The "oxygen cabin" described below contains the "cabin and host".

Ear balance method

- 1 Swallowing action.
- 2 Move your jaw.
- 3 Take a deep breath, close your mouth, pinch your nose, and then inflate hard. if still unable

To improve the ear pressure, please adjust the manual valve to decompress, so that the air pressure rises slowly

Or reduce the pressure to relieve the earache, and then slowly close the manual valve to increase the pressure.

Ozone anti -virus method

- 1 The cabin body is closed with a zipper (no one in the cabin).
- 2 Turn on the ozone disinfection button after turning on the machine (automatically shut down after completion).
- 3 Open the cabin body, ventilate and discharge ozone.
- 4 Ozone antivirus time is 5 minutes (software self-control). !



Product features



First, the scope of product applications
Supply users to supplement oxygen.

Second, structural characteristics
The oxygen compartment consists of the host and the cabin.

Three, Working principle
Taking the AC220V power supply as the power source, compress the compressor as the cabin, and at the same time, the oxygen is used to make oxygen.

Fourth, application field

1. Can resist fatigue, relieve stress, and improve sleep.
2. Beauty salon: used for beauty and skin.
3. Athletes and fitness personnel are used to restore physical strength and improve physical fitness.
4. Plateau: scientific and outdoor institutions, for supercharged and oxygen, can relieve the altitude reaction.
5. Family: For micro -pressure oxygen health.

Five, Main technical indicators

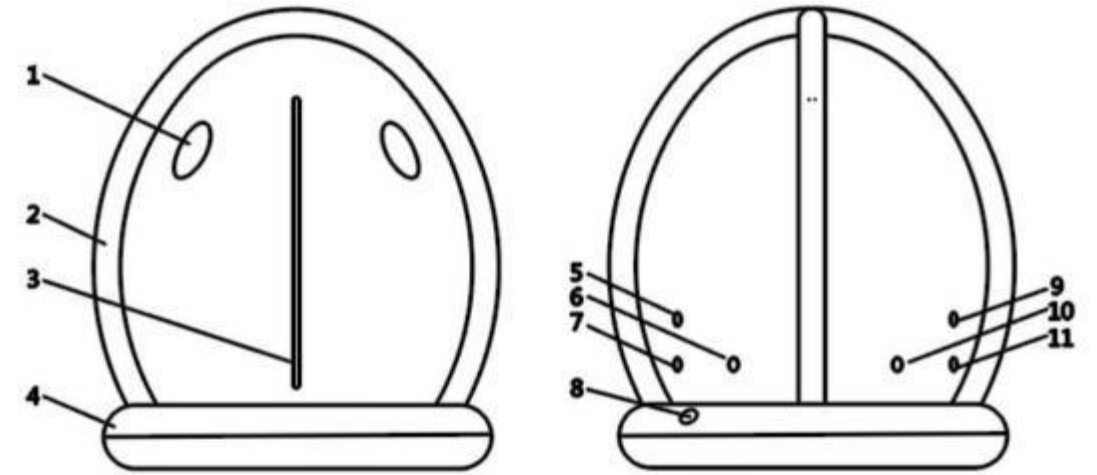
1. Maximum pressure in the cabin: 30kPa (\pm 3KPa)
2. Inside the cabin, host noise: \leq 60db (a)
3. When the maximum oxygen flow is recommended at 3L/min, the oxygen concentration is \geq 90%
4. Maximum oxygen concentration in the cabin: 23%
5. The weight of the cabin: 13.5kg host weight: 43kg
- 6, rated power supply: \sim 220V, 50Hz
- 7, rated input power: \leq 500VA
8. The size of the cabin: 125 x 160 (cm)
9. Console size: 48 x 27 x 56 (cm)
10. As the altitude rises, efficiency decreases

11. Electrical classification: Class II equipment
12. Safety system
 - (1) Time to time, alarm alarm (continuous "beep, tidal" alarm sound for 30 seconds)
 - (2) The concentration of oxygen in the cabin is higher than 23%, the alarm alarm (continuous "beep, tidal" alarm sound for 10 seconds, and the oxygen flow decreases) (5 minutes after starting oxygen therapy)
 - (3) Excessive pressure, alarm alarm of compressors (consecutive "beeping, tidal" alarm)
 - (4) Low oxygen supply concentration alarm (continuous "beep, tidal" alarm sound for 10 seconds)
 - (5) Power off the police (consecutive "beep, beep" alarm sound)
13. Working system: continuous operation
14. Normal working conditions:
Environmental temperature range: 0 °C ~ 40 °C
1111 Environmental humidity range: 20%~ 75%
1111 Atmospheric pressure range: 86kPa-106kpa 【O2BAR 320A】
1 Atmospheric pressure range: 57kPa-65KPa 【O2BAR 325A】
15. Storage and transportation environment
Environmental temperature range: -20 °C ~ 55 °C
1 Environmental humidity range: 10%~ 93%, and there is no condensation
Atmospheric pressure range: 57kPa-106kPa
Note: There is no strong sunlight, non - corrosive gas and good ventilation rooms in the oxygen compartment.




Product installation and use

- 01** Open the carton, take out the cabin and the oxygen machine, the upper interface of the oxygen machine is the oxygen inlet, and the lower interface is the air inlet
- 02** Put the cover on the oxygen machine, take out 2 transparent air tubes, and 1 bracket inflation adapter
- 03** Connect one end of the inflatable tube to the charging conversion head of the bracket, and the other end to the connection port under the oxygen machine
- 04** Rotate and open the gas nozzle cover of the inflatable bracket, press the inner core to ensure that the inner core protrudes outside, connect the adapter to the inflation port, and turn on the oxygen machine switch to inflate. At this time, please ensure that the double-layer zipper of the oxygen chamber is unzipped
- 05** It usually takes about 3 minutes to inflate. After the hardness of the inflatable bracket reaches the supportable hardness, turn off the oxygen machine, unplug the inflation tube, and cover the air nozzle cover
- 06** The matching sponge cushions are placed in the cabin. Close the manual air release valve
- 07** Let the two transparent air pipes correspond to the oxygen machine and the cabin respectively, and connect them accordingly
- 08** Add an appropriate amount of water to the cup that matches the oxygen machine to increase the oxygen humidity
- 09** After the human body enters the oxygen chamber, close the double-layer zipper. Start the oxygen machine
- 10** After oxygen therapy is over, please turn off the machine immediately



- | | |
|---------------------------|------------------------------|
| 1 Observation window | 6 Automatic Discourse Valve |
| 2 Inflatable stent | 7 Clockwise |
| 3 Zipper | 8 Elastic Bridge Fundamental |
| 4 Inflatable Book base | 9 Automatic Discovery Valve |
| 5 Manual Discounted Valve | 10 Inlet and outlets |

	Product name	Oxygen machine
	Rated power	≤500VA
	Maximum oxygen	3L/min
	Maximum gas	55L/min
	Net weight	19kg
	Heavy hair	20.5kg
	Package Size	52.5*34.5*65.5
	Product Size	480*270*560
	Oxygen export pressure	0.05Mpa
	Air export pressure	0.10Mpa

After-sale service

一、 After-sale service

① Under normal use and storage conditions, the company will provide free repairs if there is a quality problem within one and a half years (one year of use) from the date of delivery of the product.

② If the product has quality problems after one and a half years from the date of delivery (the service period is one year), the user can go to the company's after-sales service department, office or dealer according to the invoice and warranty card, and the company will provide parts and components for reasonable maintenance TOLL.

2. The following conditions are not covered by the warranty:

- ① Vulnerable and consumable items: filter cotton, casters, nasal oxygen tube;
- ② Fault caused by unauthorized disassembly, repair and transformation of the product;
- ③ Failure caused by accidentally falling in the process of use and handling;
- ④ Damage caused by improper use;
- ⑤ The user causes water, drugs and other liquids to enter the machine and can not work normally;
- ⑥ Fault caused by not operating in the correct method according to the instructions;
- ⑦ Damage caused by unforeseen natural disasters (such as fire, earthquake, flood, etc.).

二、 Container loading list

- ① host: 1
- ② module: 1 set
- ③ Sponge pad: 1 set
- ④ Nasal oxygen tube: 1 tube
- ⑤ pillow: 1
- ⑥ Filter cotton: 1 cotton
- ⑦ Warranty card, qualification certificate, instruction manual: 1 copy

三、 After-sale service

The treatment of waste and residue shall comply with the corresponding national laws and regulations.

Note: Circuit and appearance changes due to machine improvements are available without notice

Disclaimer

The company is not responsible for the following situation, please understand

- 1, "contraindication" patients use oxygen chamber, and cause harm.
2. When using maintenance parts not designated by the company to carry out maintenance, repair and other maintenance activities, resulting in failure or damage.
3. Failure or damage due to non-compliance with the safety precautions and operating methods recorded in this manual.
4. Failure or damage due to failure to comply with the conditions described in this manual (power supply, installation method, storage environment, etc.).
5. Failure or damage due to product modification or improper repair.
6. Unpredictable natural disasters, such as fires, earthquakes, thunderstorms, floods and other disasters lead to malfunctions and damages.
7. Faults caused by accidental drop during transportation.

