

UNION POWER

联源

电木射出成型机
INIECTION MOLDING MACHINE

BMC射出成型机
INIECTION BMC MACHINE

宁波联源机械有限公司

NINGBO UNIONPOWER MACHINERY CO.,LTD

地址: 宁波市海曙区通途西路6006号

电话: 0574-82813266

传真: 0574-82813265

邮箱: up@cnnbly.com

网址: www.cnnbly.com

Add: TongTu Road West Road No. 6006 , Ningbo China

Tel:0086-574-82813265

Fax:0086-574-82813266

E-mail: up@cnnbly.com

Web:www.cnnbly.com



宁波联源机械有限公司
NINGBO UNIONPOWER MACHINERY CO.,LTD

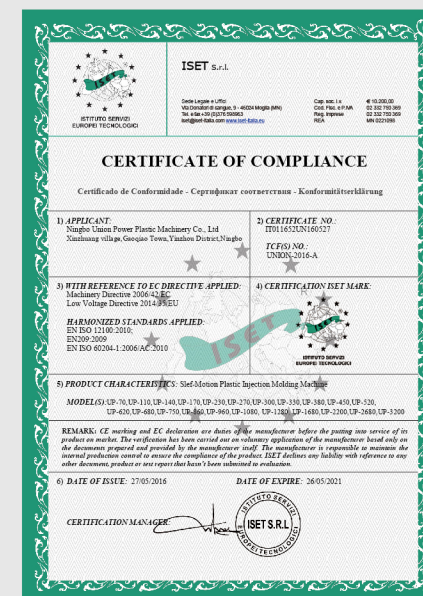
STRIVES FOR SUPERIOR QUALITY FACILITATE THE INDUSTRY FUTURE

卓越品质 缔造未来

RESEARCH & DEVELOPMENT 研发制造

Looking for defects,create the perfect! Good at the production og continuous discovery and strive to be perfect ,adhering to the company in good faith, innovation and development of ideas. 寻找缺陷，塑造完美！ 善于在生产中不断的发现和进步，力求做到完美，秉承了公司以成型，创新的发展理念。

企业资质 ENTERPRISE QUALIFICATION



企业宗旨

质量至上、重信守约、科学管理、争创佳绩

Enterprise tenet

Quality first supreme contract abiding scientific management striving for excellence

经营理念

科技先导、品质至臻、服务至上、信誉永恒

Management idea

Technology guided superior quality service uppermost eternal reputation



宁波联源机械有限公司是一家专业生产塑料注射成型机的高新技术企业。公司拥有强大的自主开发能力，以及一批有丰富产品设计生产经验的塑机专业技术人员。自主生产的多种用途的特种注塑成型机，配备世界一流液压系统及控制系统，节能、快速、稳定、高效。备受海内外客户的青睐。产品销售遍及浙江、江苏、安徽、四川、陕西、湖北、河南、河北、山东、辽宁、广东、广西、上海等省市。部份产品已远销美国、荷兰、意大利、沙特、以色列、土耳其、巴西、墨西哥、南非、俄罗斯、乌克兰等国家以及中亚五国，东南亚各国。

公司已通过ISO9001:2008质量体系认证,并获得ECM机构及ISET机构的CE证书。

公司本着“技术领航，质量取胜，”的一贯宗旨，为广大用户提供最完美的产品和最完美的服务，努力打造更新更优的“联源”品牌。

Ningbo Union Power Machinery Co.Ltd is the high and new technology enterprise specially producing plastic injection moulding machine. Our company has a great ability of developing by ourselves depending on our professional machine technician with abundant experience of design and production. Our special injection moulding machine of multi-function, equipped best hydraulic pressure system and control system. It was widely accepted by customer all over the world. Our market extend over to the following province, Zhejiang, Jiangsu, Anhui, Sichuan, Shanxi, Hubei, Henan, Hebei, Shandong, Liaoning, Guangdong, Guangxi, Shanghai..etc. Some models have been already exported to The United States, Holland, Italy, Saudi Arabia, Israel, Turkey, Brazil, Mexico, South Africa, Russia, Ukraine and other countries, as well as the five Central Asian countries, and Southeast Asian countries

Our company obtains ISO9001:2008 quality system certification and get the professional CE certificates from ECM and ISET laboratory

Based on the tenet of “Lead with technology, Win with quality”, the company provides most perfect product and best service to our customer. We are trying to make new and better brand of “Union Power” .

- 螺杆采用零压缩比，减少摩擦热，防止电木料在筒内固化；
 - 螺杆没有止退环和止逆环，使料的流动更流畅；
 - 螺杆采用较小的长径比，减少料在料筒内的停留时间；
 - 料筒/螺杆采用耐磨双金属合金，喷嘴采用硬质合金加强；
 - 料筒采用专用导热煤油内循环模式精确控温；
 - 针对电木模具高温的要求，加装模具隔热装置；
 - 预留两组模具加热及温控接口；
 - 根据电木注射成型特点，配备了开模排气功能。
- The zero compress ratio screw can reduce friction heat and prevent Bakelite solidified in the barrel
 - The screw without only retreat Central and Non-return valve will keep more fluent flow of plastic
 - The screw with short length-diameter ratio can reduce time plastic stay in the barrel
 - The barrel and screw are used with wearable double alloy-metal and sprayer is adapped with strengthen hard alloy-metal
 - The barrel temperature is accurately controlled controlled by special Thermal conductivity inner circle mode
 - There is heat prevent device for mould especially for high temperature of bakelite mould
 - There is 2 mould heating and thermostat interface
 - According to the feature of bakelite injection moulding, Equipped discharge air device when mould open

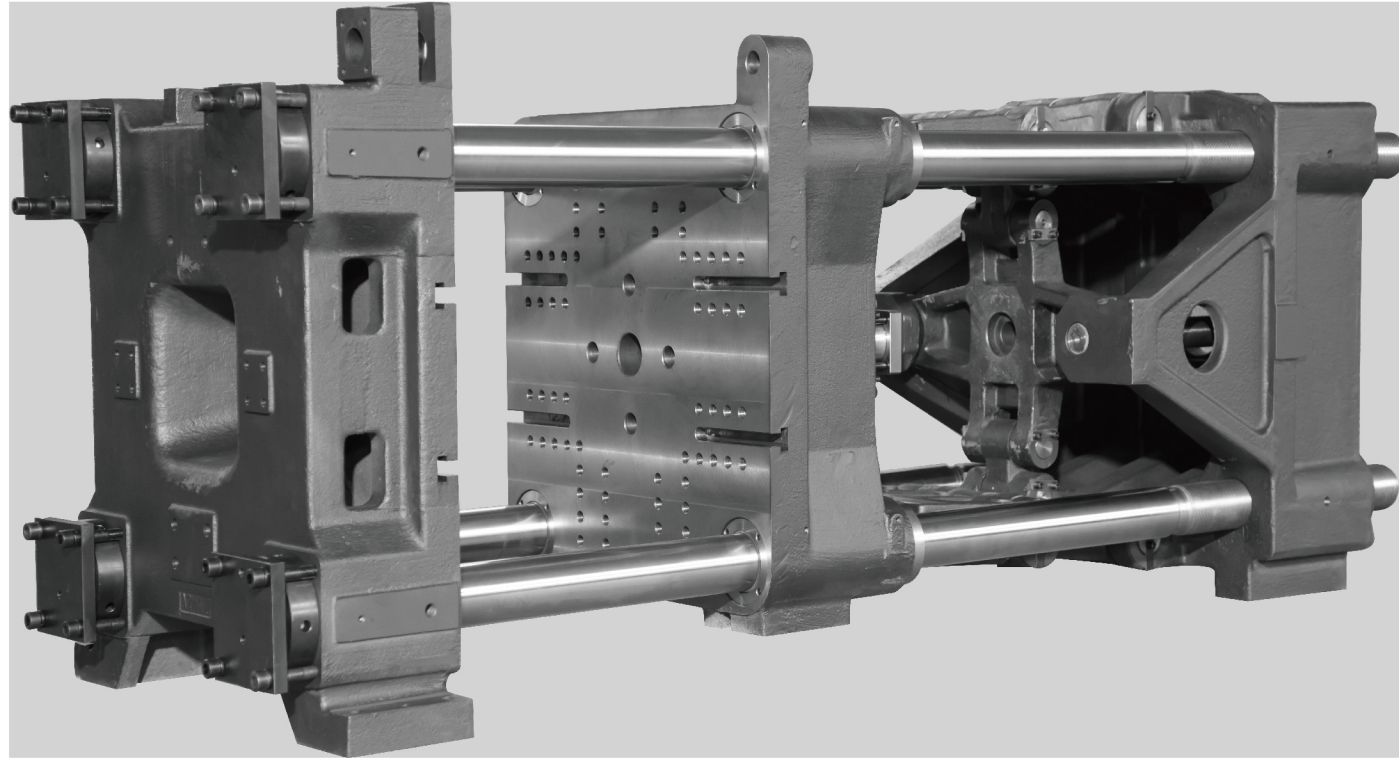
产品案例
Product showroom



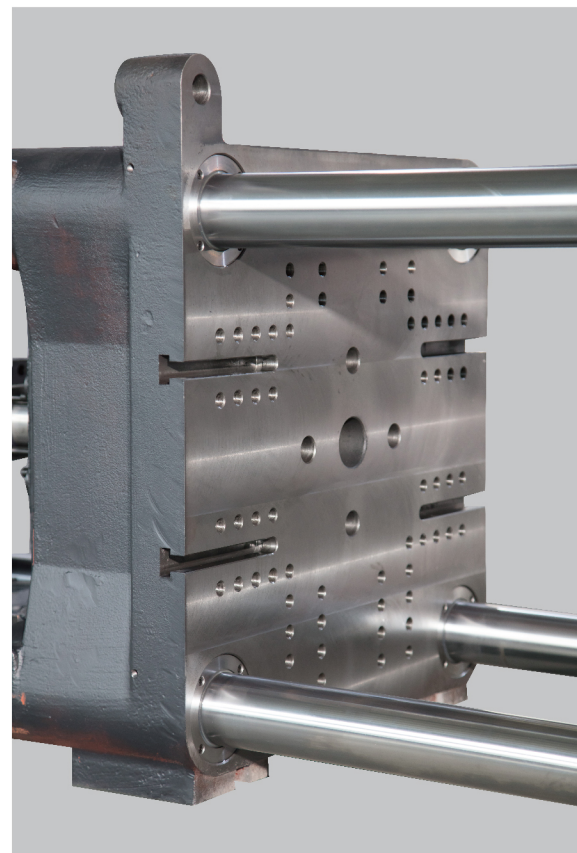
- 设计专用料筒/螺杆，减少对玻璃纤维的剪切
 - 料筒/螺杆采用耐磨双金属合金，喷嘴采用硬质合金加；
 - 料筒采用内循环流道模式直接控制料温；
 - 专用的油压式自动供料系统，提供稳定的进料功能；
 - 针对BMC模具的高温要求，加装模具隔热装置；
 - 预留两组模具加热及温控接口；
 - 根据BMC注射成型特点，配合了二次顶/排气等功能。
- Special designed barrel and screw can reduce cut of fiber glass.
 - The barrel and screw are used with wearable double alloy-metal and sprayer is adapped with strengthen hard alloy-metal.
 - The barrel temperature is accurately controlled by special Thermal conductivity inner circle mode.
 - Special oil pressure automatic material supply system provides stable feeding function.
 - There is heat prevent device for mould especially for high temperature of BMC mould.
 - There is 2 mould heating and thermostatinterface.
 - According to the feature of BMC injection moulding ,Equipped double discharge air device when mould open.

产品案例
Product showroom





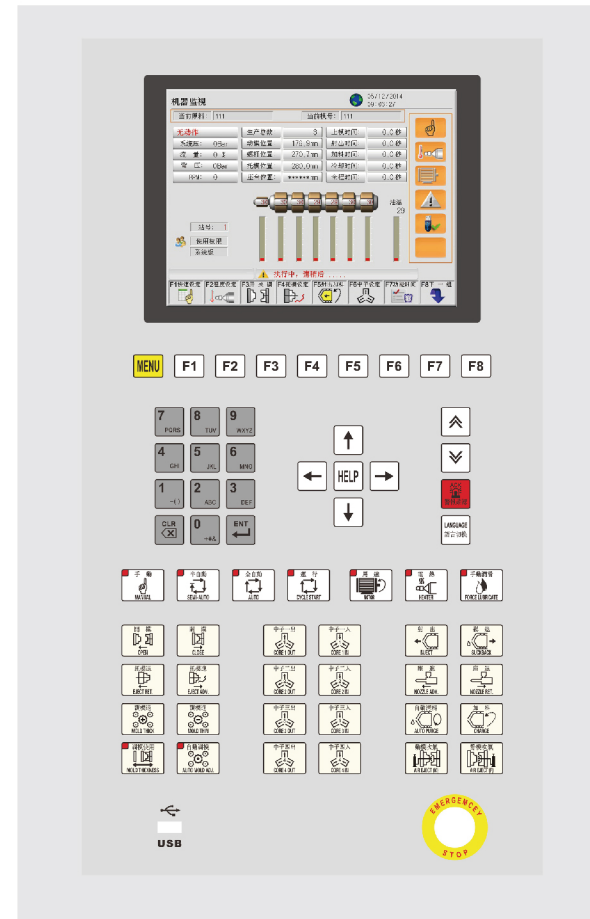
高刚性合模机构 High rigidity clamping mechanism



联源新一代系列采用超大容模空间及超长行程之四方模板设计，其大柱内距及开模行程均特别大，使本机适用范围更广，可使用与更广泛的模具尺寸及各类成型作业。
联源系列在设计上采用先进的电脑辅助设计，以3D实体模型进行参数的设计，并以有限元素分析进行结构最佳设计，确保锁模结构的刚性及强度。

Large column spacing and opening stroke are particularly large so that the range of models application is wider and with adoption of a wider range of mold size and various molding operation.
Union power Series on design adopts advanced computer aided design ,parameter design in 3D entity model and the finite element analysis for structural optimal design to ensure the rigidity and intensity of clamping structure.

全数字电脑 Full digital computer

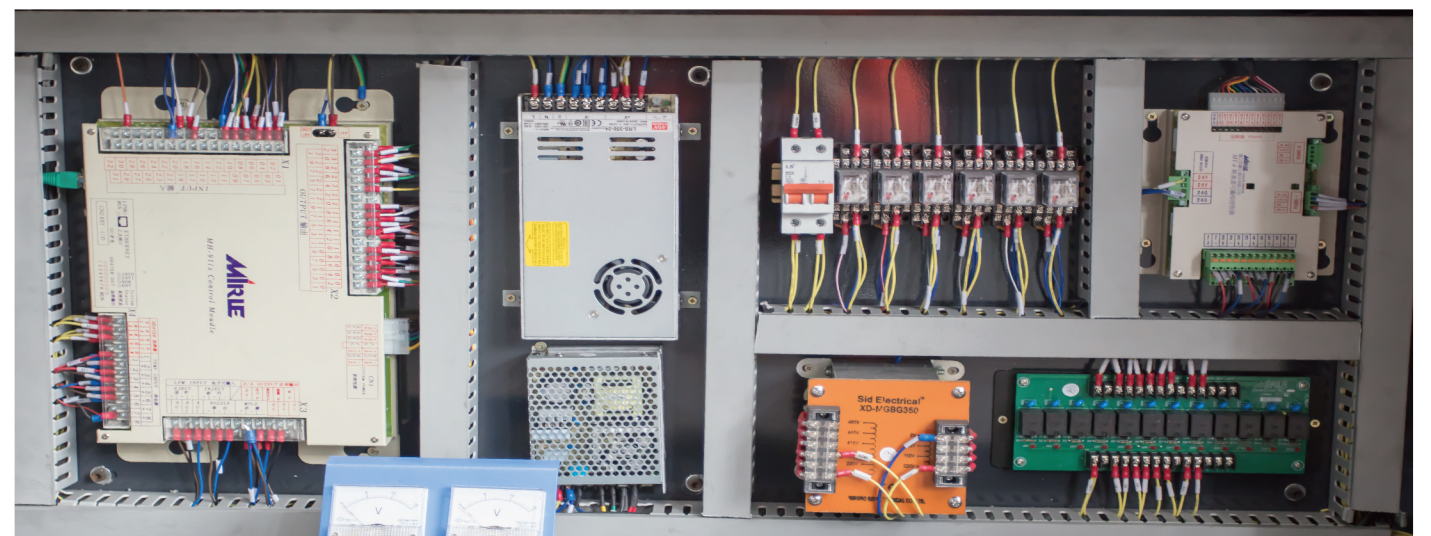


控制系统采用全数字电脑，专用控制器，多重CPU分工处理，设有多功能故障自动监测、报警系统、可储存99付模具的加工程序、备有远程控制接口。系统具有很高的稳定性和响应速度。

Multiple CPU processing, equipped with mulyi-functional automatic fault detection and alarm system, it can store 99 pay mould process, equipped with remote control interface .The system has high stability and response speed.

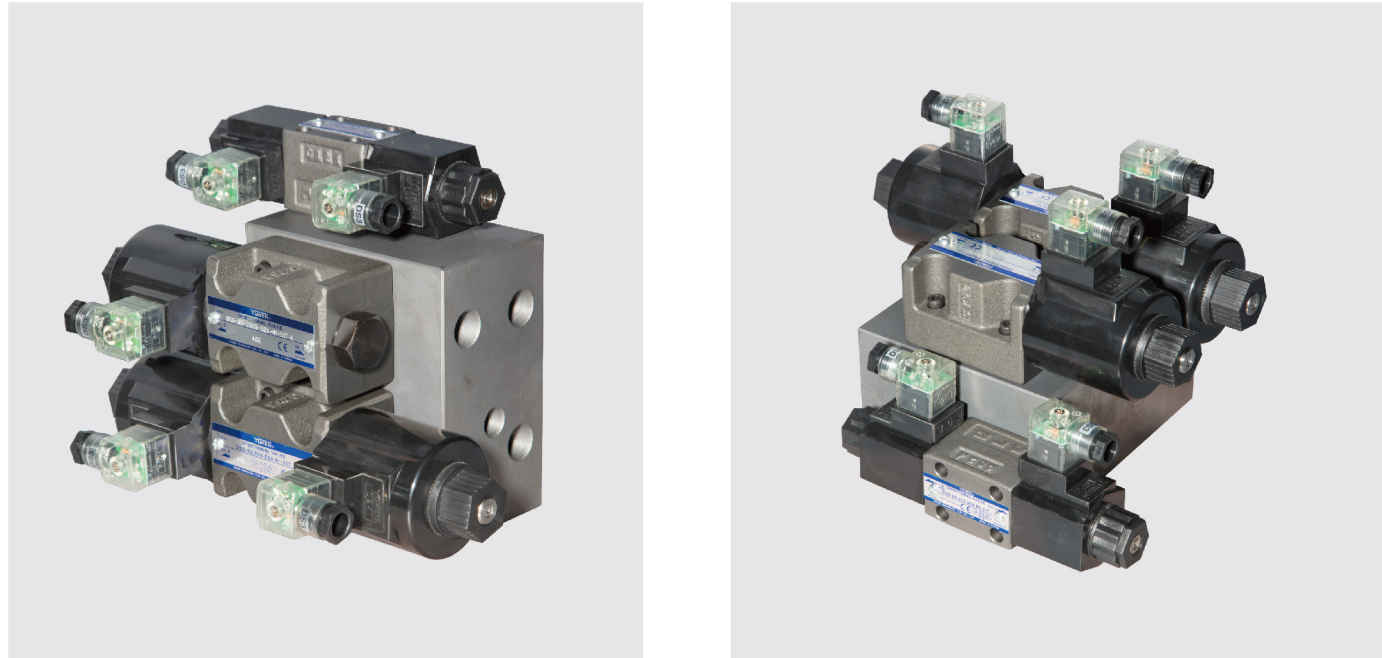
- 多种文字可切换。
- 手动、半自动、全自动三种工作模式选择。
- 可提供EUROMAP机械手界面。
- 运行状态自动监测和故障报警与诊断。
- 斜率设定机能，可设定各阶段动作启动与停止缓冲曲线，使运动流畅平稳。
- A variety of text can be switched .
- Manual ,semi-automatic and fully automatic mode.
- To provide EUROMAP robot interface.
- Automaict movement monitoring with alarm and fault diagnosis
- Function of slope setting can the start and stop of movements,so as ensure the smooth mevement.

电器元件 Electrical components



液压部件 Hydraulic components

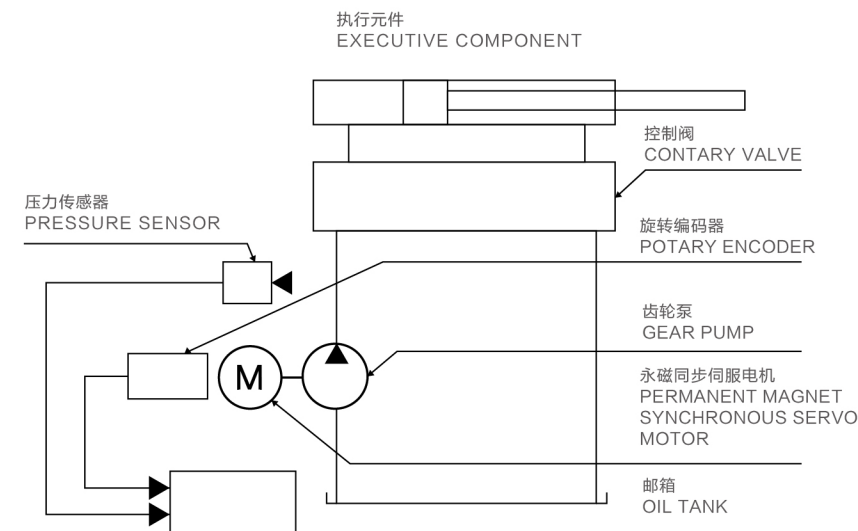
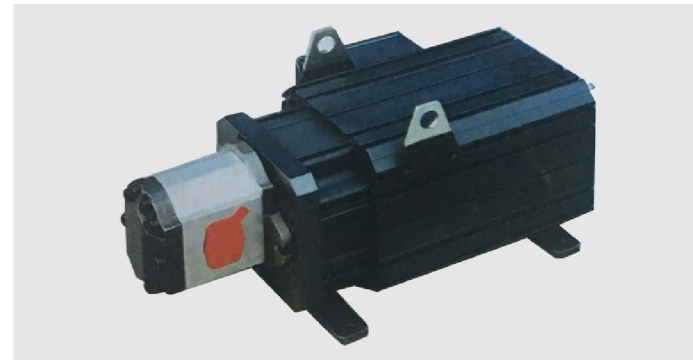
液压系统全部采用进口名牌液压元件，采用插装和滑阀相结合的油路，有效提升系统响应速度。
Which improves the oil circuit combining inserts and slide valves, and also effectively raises the response speed of the system.



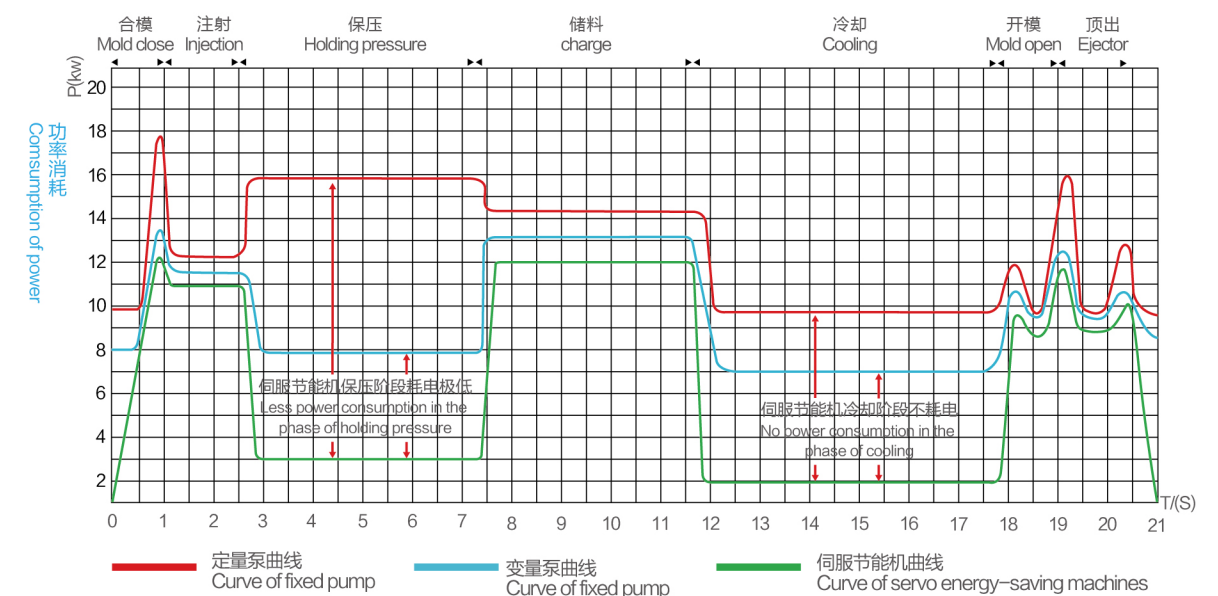
- 散热片式冷水器散热效率高，压力损失小，保证液压系统稳定运行，提高重复精度和产品的合格率。
- 插装式溢流阀调整熔胶背压，调整范围更广更稳定，产品更精致美观。
- 世界名牌液压元件配以差动式油路设计，保证锁模快捷、平稳、低噪，缩短成型周期，提高生产效率。
- 自封式高精度进油过滤全流量过滤油路，有效防止液压油的污染和劣化，使油泵，油阀等液压元件运行更平稳，液压密封件的寿命更长。

- Hydraulic components of european and american brands with differential circuit design ensure locking fast, stable ,low noise,shorten the moldingcycle,improve production efficiency.
- Built-in cooler high thermal efficiency,pressure loss,to ensure stable operation of the hydraulic system ,to improve the repetition rate precision and qualified products.
- Cartridge relief valve adjust collosol back pressure,wider and more stable adjustment range ,more stable adjustment range,more sophisticated and beautiful products.
- Automatic closed-end high-precision into the full flow oil filter,effectively prevent the pollution and degradation of hydraulic oil,so that the oil pump ,valve and other hydraulic components run more stable ,longer life og hydraulic confidential.

节能原理 Energy saving principle



超强节电：在理想的工作状态下，相比传统注塑机节能率可达50%~80%。
超强稳定：比传统注塑机成型重复精度大大提高。
低噪音：整机运行低噪音。
超级节水：无溢流发热，低油温节约冷却用水，使密封件使用寿命更长。
快速响应：快速启动
HIGH ENERGY SAVING:In an idea working state,compared with conventional injection molding machines,their energy saving can reach 50%~80%.
BETTER MOLDING STABILITY
Repeatability is greately improved due to servo moto closeloop control.
LOW NOISE
The machine runs with low noise
HIGH ENERGY SAVING
No overflowing heating,low oil temperature saves cooling water ,and increases the using life of elements.
QUICK REPONSE
The response



		PF-70	PF-110	PF-140	PF-170	PF-230	PF-280	PF-300	PF-350	PF-400	PF-450	PF-530	PF-630
螺杆直径	mm	32	35	42	45	55	60	65	70	75	80	85	95
理论注射容量	cm	102	173	263	358	594	806	946	1270	1590	1784	2019	3048
注射重量	g	120	200	310	420	700	950	1100	1500	1890	2100	2380	3600
注射压力	Mpa	164	185	166	166	185	186	159	186	189	162	166	180
螺杆转速	rmp	220	215	215	190	155	180	220	190	190	160	130	150
合模力	kN	700	1100	1400	1700	2300	2800	3000	3500	4000	4500	5300	6300
移模行程	mm	280	325	380	440	475	550	600	635	675	760	770	870
拉杆间距	mm	310×310	370×370	420×420	470×470	530×530	580×580	620×620	660×660	730×730	760×760	830×830	880×880
允许模具厚度	mm	100 ~ 330	135 ~ 380	135 ~ 450	180 ~ 500	220 ~ 550	200 ~ 580	200 ~ 620	250 ~ 670	250 ~ 720	280 ~ 800	330 ~ 810	350 ~ 900
顶出行程	mm	80	100	120	140	135	150	150	160	150	200	240	250
液压顶出力	kN	28	33	46	46	70	70	70	89	89	110	150	150
最大油泵压力	Mpa	17.5	17.5	16	16	16	16	16	16	16	16	16	16
油泵马达功率	kW	7.5	9	11	13	15	18.5	22	30	37	45	45	55
机器外形尺寸	mm	3.6×1.12×1.72	4.2×1.2×1.7	4.2×1.2×1.9	4.8×1.4×1.9	5.8×1.55×2.15	6.2×1.65×2.25	6.3×1.75×2.37	7.2×1.9×2.35	7.35×1.95×2.4	7.5×2×2.45	8.4×2×2.76	10.2×2.2×2.7
油箱容积	L	135	160	190	240	350	380	400	600	750	880	900	1040
机器重量	t	2.5	3	3.4	5	6.3	8.3	9.3	12.8	15.4	16	21	32

由于产品改进，技术参数变更，恕不另行安排。
We reserve the right to make any technical improvement without prior notice

		注射装置				锁模装置							其他				
型号	螺杆直径	理论注射容积	注射重量 (BMC)	注射压力	螺杆转速	锁模力	开模行程	拉杆内间距	最大模厚	最小模厚	顶出行程	顶出力	马达功率	电热功率	外形尺寸	机器重量	储料量
model	screw diameter	shot volume	injection weight	injection pressure	screw speed	clamping force	open stroke	space between tie bars	max mould thickness	min mould thickness	ejector stroke	ejector force	motor power	heating power	machine size	machine weight	material cubage
Unit	mm	cm3	g	Mpa	rpm	kN	mm	mm	mm	mm	mm	kN	Kw	kW	m	t	kg
UP-140BMC	45	331	530	177	200	1400	380	420X420	450	160	120	46	15	5	4.5x1.3x2.7	5.1	35
UP-170BMC	48	376	600	172	200	1700	435	470X470	520	180	135	46	15	6.5	5.2x1.3x2.8	6.1	35
UP-200BMC	55	651	1040	160	200	2000	440	480X480	525	180	140	46	18.5	6.5	5.6x1.4x2.9	7	35
UP-240BMC	60	763	1213	168	178	2400	475	530X530	530	200	140	62	22	6.6	5.8x1.5x3.1	8.1	35
UP-280BMC	65	1023	1636	171	178	2800	550	580X580	580	200	150	62	30	10	6.4x1.6x3.3	9.2	60
UP-350BMC	70	1235	1963	179	180	3500	660	660X660	680	250	160	89	37	13.5	7.2x1.8x3.7	13.7	60
UP-400BMC	80	1723	2670	155	160	4000	700	730X730	780	250	180	110	55	15	7.9x1.9x3.8	16.8	80
UP-530BMC	85	2219	3439	160	140	5300	770	830X830	810	330	200	150	55	20	8.5x2.3x3.9	22.5	80

		注射装置				锁模装置							其他			
型号	柱塞杆直径	理论注射容积	注射重量 (BMC)	注射压力	锁模力	开模行程	拉杆内间距	最大模厚	最小模厚	顶出行程	顶出力	马达功率	电热功率	外形尺寸	机器重量	储料量
model	screw diameter	shot volume	injection weight	injection pressure	clamping force	open stroke	space between tie bars	max mould thickness	min mould thickness	ejector stroke	ejector force	motor power	heating power	machine size	machine weight	material cubage
Unit	mm	cm3	g	Mpa	kN	mm	mm	mm	mm	mm	kN	Kw	kW	m	t	kg
UP-140ZS	30	268	456	489	1400	380	420X420	450	160	120	38	15	5	4.5x1.3x2.7	5.1	35
	40	477	811	275												
UP-170ZS	40	477	811	275	1700	435	470X470	520	180	135	62	15	6.5	5.2x1.3x2.8	6.1	35
	45	604	1027	218												
UP-200ZS	45	604	1027	218	2000	440	480X480	525	180	140	62	18.5	6.5	5.6x1.4x2.9	7	35
	50	746	1268	176												
UP-240ZS	50	746	1268	176	2400	475	530X530	530	200	140	62	22	6.6	5.8x1.5x3.1	8.1	35
	55	902	1534	146												
UP-280ZS	60	1385	2354	270	2800	550	580X580	580	200	150	62	30	10	6.4x1.6x3.3	9.2	60
	65	1625	2763	230												
UP-350ZS	65	1625	2763	230	3500	660	660X660	680	250	160	62	37	13.5	7.2x1.8x3.7	13.7	60
	70	1885	3203	198												
UP-400ZS	70	1885	3203	198	4000	700	730X730	780	250	150	79	55	15	7.9x1.9x3.8	16.8	80
	75	2164	3678	172												
UP-530ZS	75	2164	3678	172	5300	770	830X830	810	330	200	150	55	20	8.5x2.3x3.9	22.5	80
	80	2462	4185	152												

由于产品改进，技术参数变更，恕不另行安排。

We reserve the right to make any technical improvement without prior notice