



Hong Kong Sum Wai Electrical Co., Ltd  
Dongguan Sum Wai Electronic Co., Ltd



# Company Profile

Connecting people, connecting the world



# CONTENTS

01

**Company Overview**

02

**Products & Application**

03

**Production & Quality assurance**

04

**Why Choose us**

A light gray silhouette of a world map is centered in the background of the slide. The map shows the outlines of continents and major islands.

**01**

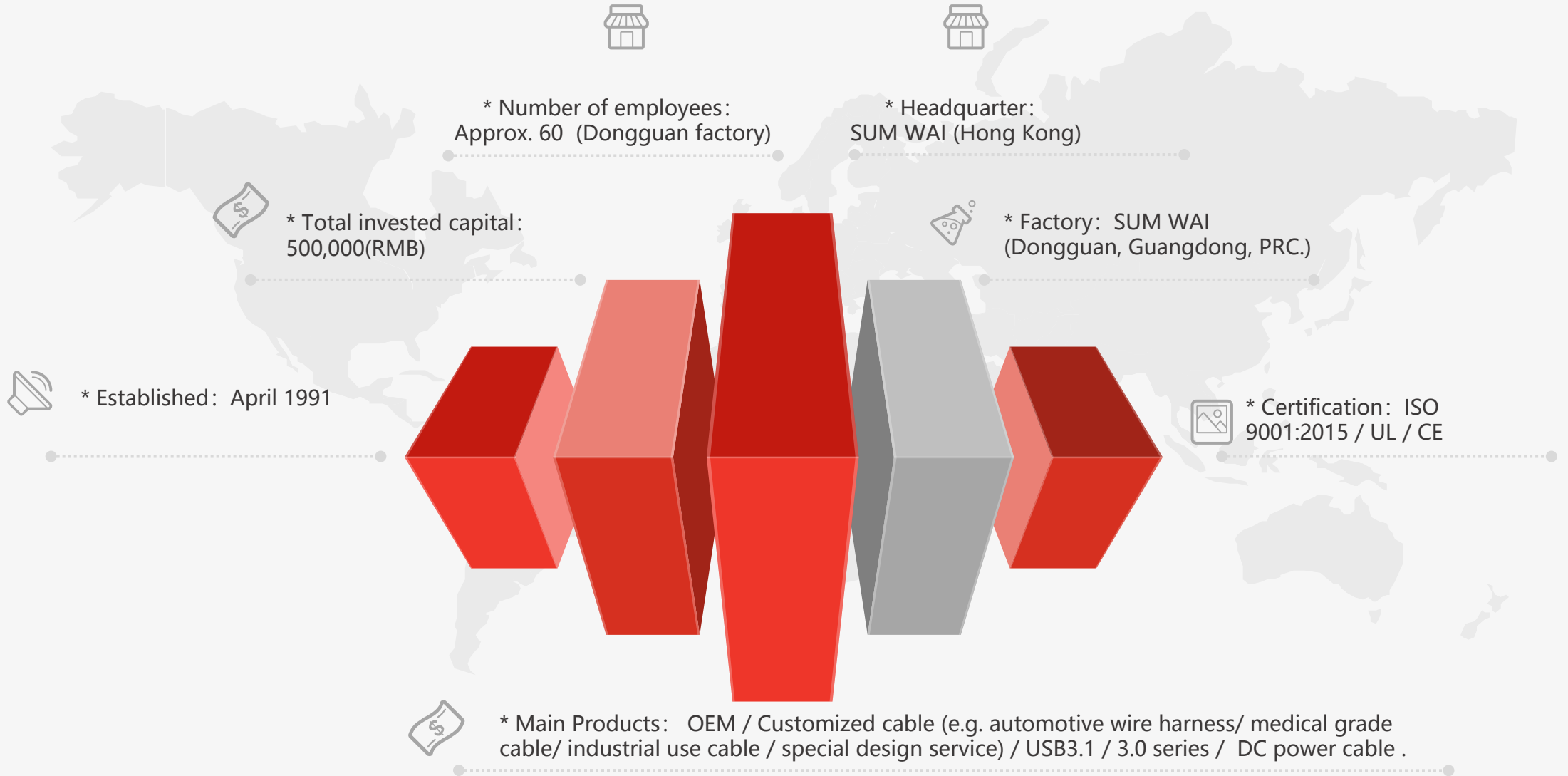
---

**Overview**





# Background





## Mission

Enhance customer's value  
in terms of quality and  
effectiveness on our cable



## Value

Honesty, pragmatism and  
excellence

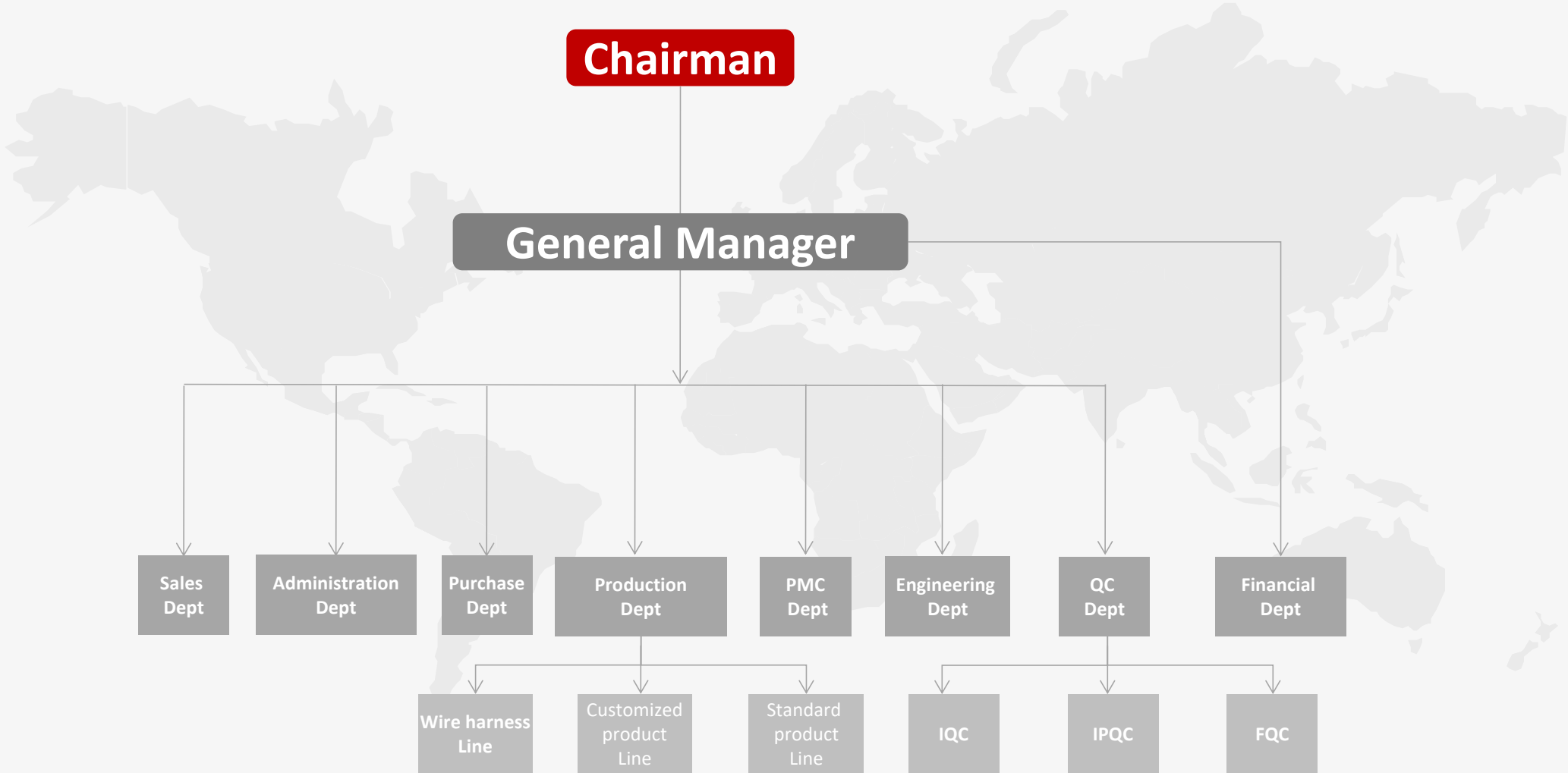


## Quality

To meet or exceeds customer's  
demand



# Company structure





02

**Products &  
Applications**



**Automotive  
wire  
harness**

**Consumer  
Electronics**

**Industrial  
& Medical**



# Automotive Wire Harness



Active system speaker harness



Power & audio wire harness



Driving recorder harness



Navi & camera switching cable



Battery harness



Reverse system harness



Connecting people,  
connecting the world





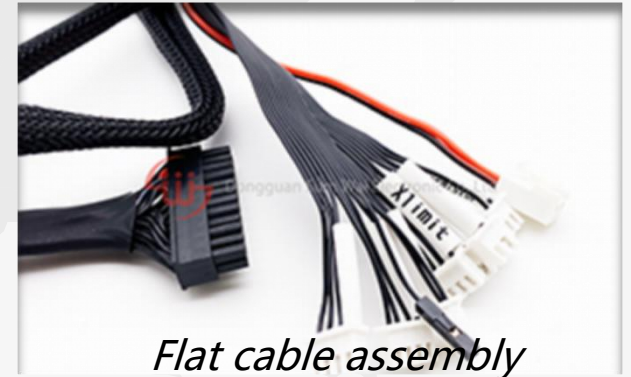
# Automotive Wire Harness



*Charging Cable for Scooter*



*New energy wire Harness*



*Flat cable assembly*



*High power wire harness*



*Automotive wire harness*



*Wire harness for new energy*



# Automotive Wire Harness



*OBD cable*



*Antenna cable*



*SAE cable*



*7.5A fused SAE cable*



*SAE cable*



*SAE extension cable*



**USB 4 (40Gb/S)**



**USB3.1 Gen2 (10Gb/S)**

## Consumer Electronics

exhibition



**USB 3.0 to SATA III HDD**



**USB 3.0 - micro b data cable**



**USB - 2in1(Lightning & Micro)**



**TYPE-C charging cable**



*Silicone USB cable*



*TYPE-C audio amplifier*



*HDMI cable*



*VGA cable*



*UTP LAN Cable*



*AV cable (RCA)*





# Industrial Cable



*High voltage power supply cable*



*Power cable with IP65 standard*



*Lan & DC for surveillance system*



*Customized cable assembly*



*TPU + TPEE Trailing cable*



*Spring coiled cable*



# Medical Grade Cable



*Silicone nurse calling cable 1*



*Silicone nurse calling cable 2*



*Silicone nurse calling Cable 3*



*Nurse calling cable (ABS casing)*



*Customized DIN AMP cable*



*Customized 2.35mm Plug*



# Applications



**Automotive**



**Medical uses**



**Digital peripheral products**



**Laptop & notebook**



**Consumer electronics**



**Industrial uses**



**Electrical appliances**



Connecting people, connecting the world



**03**

---

**Production &  
Quality assurance**







## Production equipments

### List of equipments:

- ✓ Automatic wire cutting machine x 6 sets
- ✓ Automatic stripping + tinning machine x 4 sets
- ✓ Automatic soldering machine x 6 sets
- ✓ Automatic crimping machine x 4 sets
- ✓ High frequency soldering machine x 2 sets
- ✓ 1.5T-2.5T vertical injection machine x 16 sets
- ✓ Cable winding machine x 8 sets
- ✓ Universal cable testing machines x 8 sets
- ✓ UL standard laboratory x 1 room



UL standard laboratory



## Assembly line: Dongguan factory

DC workshop : 8 Lines

We believe the concept of “Quality is determined within manufacturing processes”. Thus, we guarantee every steps are following the SOP & SIP strictly.



Factory Entrance



Front process area



Vertical injection area

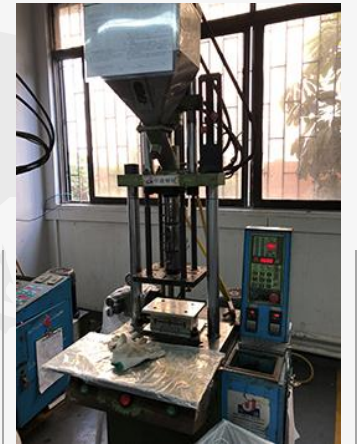
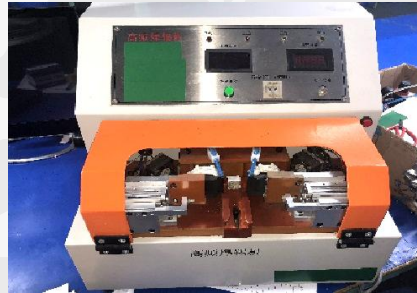


Assembly lines





## Production equipments



950 Wire cutting machine

Automatic soldering machine

Automatic crimping machine

High-frequency soldering machine

Cable winding machine

DC vertical molding machine





# Reliability testing lab.



**EDX1800 Spectrometer**



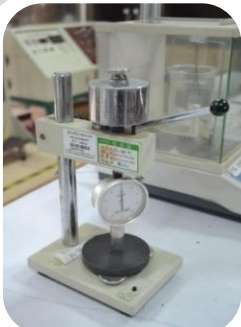
**Elongation Tester Precision Balance**



**Tension Tester AC Tensile Tester**



**Two dimensional projector**



**Hard meter**



**Static Tension Tester**



**Bending tester**



**High Temperature Tester**



**Thickness meter**





# Reliability testing lab.



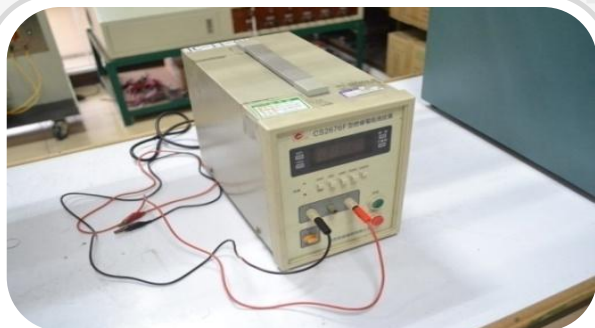
Shaking heat-up Tester



Constant Temperature Freezer



Burn resistance tester



Insulation Tester



Withstanding Voltage Tester



Microwave Processor



Aging box



## Test can be conducted on Material: Jacket

1. RoHS
2. Overall Diameter of Jacket
3. Cross sectional area of Jacket
4. Min. thickness of Jacket
5. Avg. thickness of Jacket
6. Flame Test VW-1

## Test can be conducted on Material: Insulations

1. RoHS
2. Overall Diameter of insulation
3. Cross sectional area of insulation
4. Min .thickness of insulation
5. Avg .thickness of insulation
6. Distance between conductor
7. Thickness after separation
8. Cold Bend test

## Test can be conducted on Material : Conductor

1. RoHS
2. Heat Shock test
3. Deformation test
4. Dielectric test
5. Insulation resistance test
6. Tight of conductor
7. Elongation
8. Tensile strength





04

---

**Why Choose Us?**





# Our advantages:



**Quick Response**



**One Stop Solution**



**Small Orders Accepted (1 pcs UP)**



**Customization Welcome**



**Excellent Quality, Professional Support (Over 20Yrs)**







---

# Thank you for watching!

---

**Contact information:**

Dongguan SUM WAI Electronics Co Ltd.,  
Addr:No.4 Pu Jiang RD, Da Ning District  
Humen Town, Dongguan City, Guangdong Province,PRC,.  
Wechat : shawcstsai  
Email: [swcstsai@163.com](mailto:swcstsai@163.com) / [shawn@xt-cables.com](mailto:shawn@xt-cables.com)  
Tel: 86-134-5060-6052 / 86-134-8008-9141

Connecting people, connecting the world