



HP-DRC1930WZ Series Dome PTZ Laser Camera



DRC series dome HD infrared laser imaging camera is designed for 24 hours monitoring. With super homogenizing NIR laser and low illumination megapixel telephoto lens. The max detection distance for human/car/object is 9.5km in the day and 300m in the night

Built-in technical grade embedded control electronic system, the camera operation like zooming, focusing, video switch, rotation is stable and accurate. One integral aluminum alloy housing makes sure the camera works well outdoor. In combination with 360-degree PT, the camera can conduct 24 hours real-time monitoring. The camera is IP66 rates, which ensures camera's normal operation under tough weather conditions.

Product's Highlights:

- With DSS digital stepper illumination angle control, laser can zoom with optical lens automatically
- WZ-II super homogenizing and power consumption control of NIR laser ensure a better effect.
- Precise synchronous switching of laser switch and camera into day-night mode
- Precise double optical alignment, 0.01° SLM optical self-locking alignment.
- Heavy duty PT, 360° continuously rotation observation, no dead angle, smooth and less image dithering.
- One integral aluminum alloy housing, IP66 ingress protection, waterproof, dust-proof, adapt to all kinds of harsh environment.



Night Vision



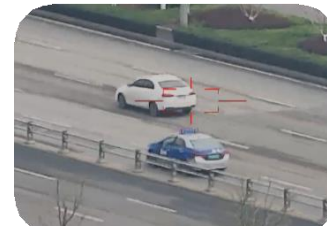
Intrusion Detection



High Resolution



Auto-Tracking





Model		HP-DRC1930WZ
Optical Distance	Day	1000m
	Laser Night Vision	500m
Visible Camera	Sensor	1/2.8" Star Level CMOS, Integrated ICR Dual Filter D/N Switch
	Resolution	1920(H)x1080(V)
	Frame Rate	32Kbps~16Mbps, 60Hz
	Min. Illumination	0.0005Lux (Color), 0.0001Lux (B/W)
	SD Card	Support
	Defog	Support
	Image	Support white balance, electronic shutter, frame accumulation, backlight compensation, strong light suppression, 2D / 3D digital noise reduction, electronic anti shake, wide dynamic
Visible Lens	Focal Lens	4.7~141mm 30X
	Image Stabilization	Support
	Focus Control	Manual/Auto
	Digital Zoom	1~8X
Laser Light	Power	5W
	Wave Length	810nm
	Security	IEC60825 Standard
Laser Lens	lens	30mm F1.0
	Angle	2° ~50°
	Homogenization	WZ-II super homogenizing
	Focus Angle	Precision digital code disk drive positioning
PTZ	Patrol	6*patrol route
	Rotation	Pan: 0~360°, tilt: -90~+5°
	Speed	Pan: 0.01~120°/S, Tilt: 0.01~120°/S
	Preset	255
Interface	Ethernet	RS-485 (PELCO D protocol, baud rate 2400bps) ,RS-232 (option) ,RJ45
	Protocol	IPv4/IPv6, HTTP, HTTPS, 802.1x, Qos, FTP, SMTP, UPnP, SNMP, DNS, DDNS, NTP, RTSP, RTP, TCP, UDP, IGMP, ICMP, DHCP, PPPoE, ONVIF
	Video Output	PAL/NTSC
	Power	AC12V /DC24V
	Compression	H.265 / H.264 / MJPEG
Intelligent	AI Analysis	Support intrusion detection, boundary crossing detection, entering/leaving area detection, motion detection, wandering detection, people gathering, fast moving, target tracking, items left behind, items taken; people/vehicle target detection, face detection; Support 16 area settings; support people, vehicle filtering function;
	Auto-tracking	Single/multi scene tracking; panoramic tracking; alarm linkage tracking
	AR Fusion	512 AR intelligent information fusion
Environmental	Operate Temp	-25℃~+55℃ (-40℃ optional)
	Storage Temp	-35℃~+75℃
	Humidity	<90%
	Ingress Protect	IP66
	Housing	PTA three-resistance coating, Seawater corrosion resistance, Aviation waterproof plug
	Anti-fog/salty	PH 6.5~7.2
	Power	50W (Peak)
	Weight	5kg

