



HP-MFC6107WZ Series Multi Functions Thermal Camera



MFC Series is a multifunctional handheld infrared detection camera, which can observe and detect targets all day and night. Uses of CMOS low-light detector, the visible can achieve low-light imaging, or cooperate with 640x512 high resolution infrared detector, thus helping users to find the more hidden targets.

MFC Series also integrates long-distance eye-safe laser rangefinder, Beidou/GPS positioning, and digital electronic compass, which can help users position the observation location, target coordinates, azimuth and other geographical information, so as to quickly discover and dispose of targets. At the same time, advanced image compression algorithm is used to record images, which can help users to conduct synchronous sampling and video forensics.



Night Vision



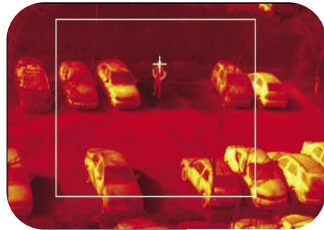
Polar Color Option



Digital Zoom



Ranging Scale





Model		HP-MFC6107-T275-5WZ	HP-MFC6110-T240-5WZ
Effective Distance (DRI)	Vehicle (2.3*2.3m)	Detection: 6.3km; Recognition: 1.8km	Detection: 8.6km; Recognition: 2.4km;
	Human (1.8*0.6m)	Detection: 2.5km; Recognition: 0.7km;	Detection: 3.4km; Recognition: 0.9km;
Thermal Sensor	Sensor	5th generation uncooled FPA sensor	
	Effective Pixels	640x512, 50Hz	
	Pixel Size	17μm	
	NETD	≤40mK	
	Spectral Range	7.5~14 μ m, LWIR	
Thermal Lens	Focal length	75mm	100mm
	FOV	18.5°x13.9°	6.2°x 5.0°
	Focus	Motorized	
	Eyepiece Zoom	12x (adjustable view)	
Image	SDE	Support SDE digital image processing	
	Pseudo Color	Hot Black/Hot White, pseudo-colors	
	Digital Zoom	1X~4X Continues Zoom (Step 0.1)	
Visible Camera	Detector	Ultra-Low light colorful CMOS	
	Resolution	1920x1080	
	Focal Length	75mm	40mm
	Features	3D DNR, Auto shutter, Wide dynamic	
LRF	Wavelength range	1540 nm (Eye Safety)	
	Range	50 m ~6000 m(Max:8000m)	
	Accuracy	Test conditions: visibility ≥17km target reflectivity ≥30%	
	Repetition Rate	±2m	
	Efficiency	5S	
Enhance	GPS	CEP <2m	
	Digital Compass	Azimuth accuracy <0.8°(RMS)	
	WIFI	Support	
Display	Screen	OLED	
	Resolution	1024x768	
Storage	SD Card	Support (Max 32G)	
	Photo Snap	JPEG	
	Video Recording	MP4	
Battery	Battery	18650 Rechargeable Battery	
	Working Time	6 hours continuous work	
Interface	USB Output	Support	
	Video Output	PAL	
Environmental	Operate Temp	-30℃~+55℃	
	Storage Temp	-40℃~+65℃	
	Humidity	<95%	
	Vibration	Sweep frequency:5-200-5Hz, G-force:2.5g	
	Impact	10g/11ms Half sine wave	
	Ingress Protect	IP66	
	Mount Adaptor	Standard 1/4' tripod mounting	
	Weight	2kg	
Size	253(L)x242(W)x97(H) mm		