



HP-RC Series Long Range Night Vision Laser Camera



RC series Vehicle HD infrared laser imaging camera is designed for 24 hours monitoring. With super homogenizing NIR laser and low illumination megapixel telephoto lens. The max detection distance for human/car/object is 40km in the day and 4km in the night

Built-in technical grade embedded control electronic system, the camera operation like zooming, focusing, video switch, rotation is stable and accurate. One integral aluminum alloy housing makes sure the camera works well outdoor. In combination with 360-degree PT, the camera is capable of conducting 24 hours real-time monitoring. The camera is IP66 rates, which ensures camera's normal operation under tough weather conditions.

Product's Highlights:

- With DSS digital stepper illumination angle control, laser can zoom with optical lens automatically
- WZ-II super homogenizing and power consumption control of NIR laser ensure a better effect.
- Precise synchronous switching of laser switch and camera into day-night mode
- Precise double optical alignment, 0.01° SLM optical self-locking alignment.
- Heavy duty PT, 360° continuously rotation observation, no dead angle, smooth and less image dithering.
- One integral aluminum alloy housing, IP66 ingress protection, waterproof, dust-proof, adapt to all kinds of harsh environment.



Night Vision



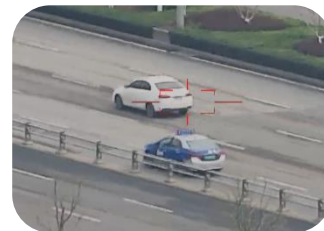
Intrusion Detection



High Resolution



Auto-Tracking





Model		RC2132WZ	RC2150WZ	RC2186WZ	RC21100WZ
Detection (Daytime)	Vehicle (2.3*2.3m)	4km	8km	12km	16km
	Human (1.8*0.5m)	2km	4km	6km	8km
Visible Camera	Sensor	1/2.8" Star Level CMOS, Integrated ICR Dual Filter D/N Switch			
	Resolution	1920(H)x1080(V)			
	Frame Rate	32Kbps~16Mbps, 60Hz			
	Min. Illumination	0.05Lux (Color), 0.01Lux(B/W)			
	SD Card	Support			
Visible Lens	Focal Lens	8~320mm 40X	8~500mm 62X	22~750mm 60X	11~1000mm 80X
	Image Stabilization	Support			
	Focus Control	Manual/Auto			
Laser Light	Power	10W	12W	15W	20W
	Wave Length	810nm			
	Night Vision	1km	2km	3km	4km
Laser Lens	lens	0.8~20mm	1.0~50mm	1.2~80mm	1.2~80mm
	Angle	1° ~20°	0.7° ~20°	0.5° ~20°	0.3° ~20°
	Homogenization	WZ-II super homogenizing			
	Focus Angle	Precision digital code disk drive positioning			
	Security	IEC60825			
PTZ	Patrol	16*Patrol Route, 256 Preset for each route			
	Patrol Mode	Preset position/pattern scanning/cruise scanning/vertical scanning/frame scanning/panoramic scanning/apple peel scanning/horizontal sector scanning			
	Rotation	Pan: 0~360°, tilt: -45~+45°			
	Speed	Pan: 0.01~30°/S, Tilt: 0.01~15°/S			
	Preset	3000			
	Enhance	Fan/Wiper/Heater attached			
	Zero Correction	Support the north zero point remote correction function			
Interface	Ethernet	RS-485 (PELCO D protocol, baud rate 2400bps) ,RS-232 (option) ,RJ45			
	Protocol	IPv4/IPv6, HTTP, HTTPS, 802.1x, Qos, FTP, SMTP, UPnP, SNMP, DNS, DDNS, NTP, RTSP, RTP, TCP, UDP, IGMP, ICMP, DHCP, PPPoE, ONVIF			
	Video Output	PAL/NTSC			
	Power	AC12V /DC24V			
	Compression	H.265 / H.264 / MJPEG			
Intelligent (One IP Only)	Auto-tracking	Single/multi scene tracking; panoramic tracking; alarm linkage tracking			
	AI Analysis	support intrusion, boundary crossing, entering/leaving area, motion, wandering, gathering, fast moving, , items left behind, items taken detection; people/vehicle/face target detection;			
	Auto-tracking	Single/multi scene tracking; panoramic tracking; alarm linkage tracking			
Environmental	Operate Temp	-25℃~+55℃ (-40℃ optional)			
	Storage Temp	-35℃~+75℃			
	Humidity	<90%			
	Ingress Protect	IP66			
	Housing	PTA three-resistance coating, Seawater corrosion resistance, Aviation waterproof plug			
	Anti-fog/salty	PH 6.5~7.2			
	Power	120W (Peak)	150W (Peak)	180W (Peak)	200W (Peak)
	Weight	23kg	35kg	45kg	48kg

