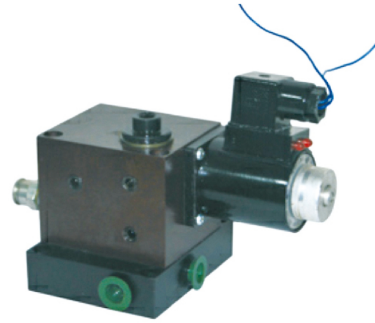


ZCF-F8B 支撑阀

● 用途与特征 APPLICATION AND FEATURES

ZCF-F8B电磁支撑阀是由泄漏量极少的二位二通换向阀与安全阀、单向阀、节流阀高度集成的组合阀。它体积小，重量轻，结构紧凑，性能先进，功能齐全，使用方便，维护简单，即使长时间支撑负载亦不会下沉，因而安全可靠。下降操作时，仅电磁铁通电即可，不必启动油泵。意外断电时，可推动磁铁端的手动杆使油缸下降。它与单作用油缸和油泵一起即可构成用途广泛的升降平台液压系统，广泛应用于仓库、码头等货物堆垛，现代化剧场的活动舞台升降系统，油压式升降电梯等。



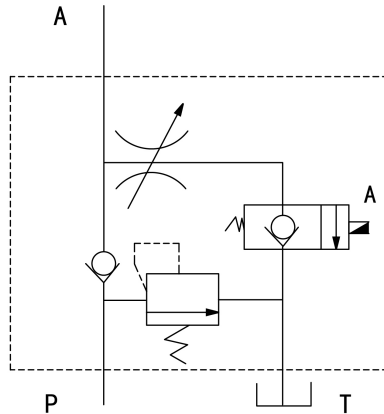
The ZCF-F8B electromagnetic support valve is a combination valve with a highly integrated two-bit two-way commutator valve and a safety valve, a one-way valve and a throttle valve with very little leakage. It is small, light weight, compact structure, advanced performance, complete functions, easy to use, simple maintenance, even if the long support load will not sink, so safe and reliable. When the operation is down, only the electromagnet can be powered on and does not have to start the oil pump. Accidental power outage, can push the magnet end of the manual rod to reduce the cylinder. It can be used together with single-acting cylinders and oil pumps to form a wide range of lifting platform hydraulic system, widely used in warehouses, docks and other cargo stacking, modern theater activities stage lifting system, hydraulic elevator and so on.

● 型号说明 MODEL CODING

ZCF	-	F	8	B	-	× ×
①		②	③	④		⑤

- ①产品代号Unit code
- ②压力等级Pressure grade F: 20 MPa
- ③公称口径Nominal size 8 mm 流量Nominal flow rate 25 L/min
- ④安装形式 Mounting B: 板式 Plate
- ⑤电源电压Power voltage DC: 12V 24V AC: 220V

● 符号 SYMBOL



● 外形图 OUTLINE DIMENSIONS

