

ZT-L12/WZT-L12/SQZT-L12系列 多路阀

● 用途与特征 APPLICATION AND FEATURES

ZT-L12系列多路阀是中高压整体式换向阀。阀内设溢流阀、单向阀，溢流阀压力可调，单向阀防止油液倒流，换向阀滑阀机能可有A、O、Y等，可任意组合。换向手柄有两种安装形式，便于不同方向的操作。该阀采用并联油路，设有两个回油口，通过一个1/4堵孔可连通或分开，堵死1/4孔使中位回油口作为一压力输出口，与其它液压元件相接提供动力源。经过特殊设计的密封方式，使阀的密封性能卓越。用于多种执行机构的液压控制。控制方式有手动，气动（电磁气阀），电动（微动开关）可以配合动力单元使用。可以做1到8联。WZT-L12带微动开关的。SQZT-L12是带气动的。本公司生产1到8联

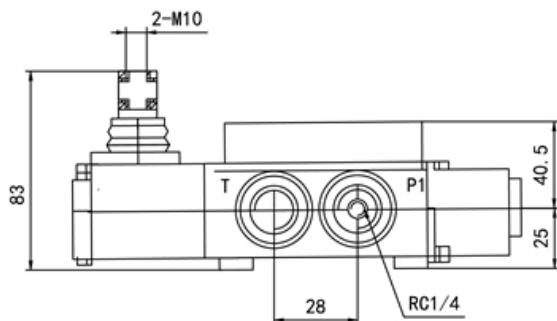
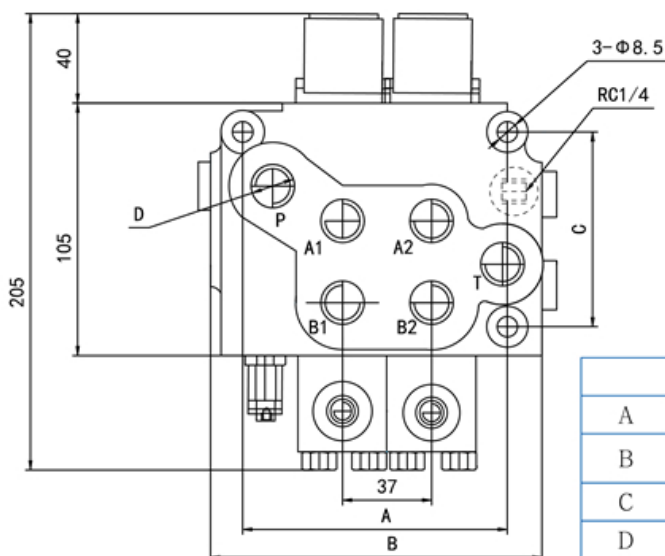
ZT-L12 valve is designed by our company, which is medium-high pressure integrity way direction changed valve, over-flow valve, over load valve, single way valve and oil offset valve etc may be installed per different customer's requirements. Over-flow valve may adjust the system pressure. over-load valve may combined the working pressure of single oil cylinder single oil valve is to prevent oil returning, direction changed valve function have A, O, Y, P etc, it may be combined random. The directional changed level has two installing ways for different operation. The valve is used parallel connection oil route It has pressure releasing outlet to connect other hydraulic components to provide power source. The sealing is specially designed with good sealing. The valve is widely used in the hydraulic system of forklift environment vehicle and light Loading machines. valves combination,1-8

● 型号说明 MODEL CODING

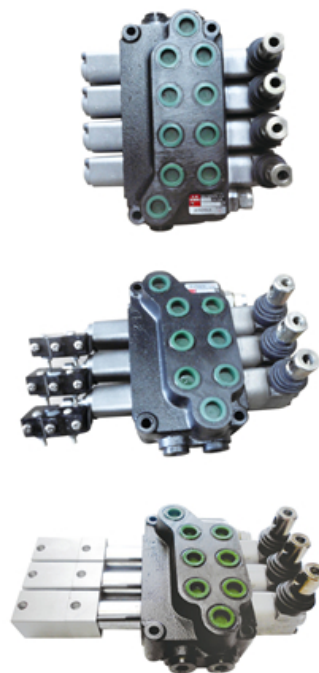
*	ZT	-	L12	E	-	×	T	-	×	-	J
①	②		③	④		⑤	⑥		⑦		⑧

- ① W 微动电开关 Micro-switch SQ电磁气动 Pneumatic
- ② 产品代号 Unit code
- ③ 公称通径 Nominal size 12 mm 流量 Nominal flow rate 40 (L/min)
- ④ 压力等级 Pressure grade E: 16 MPa F: 20 MPa 最大压力 (MPa) Max. Pressure 31.5
- ⑤ 工作联数 job number 1-8
- ⑥ 复位方式 Spool returning T: 弹簧复位 Spring W 钢球定位 (Steel ball positioning)
- ⑦ 滑阀机能 Spool function A O Y
- ⑧ 省略为正常型号 Normal type 带“J”为带压力输出 Output with pressure

● ZT-L12 外形图 OUTLINE DIMENSIONS

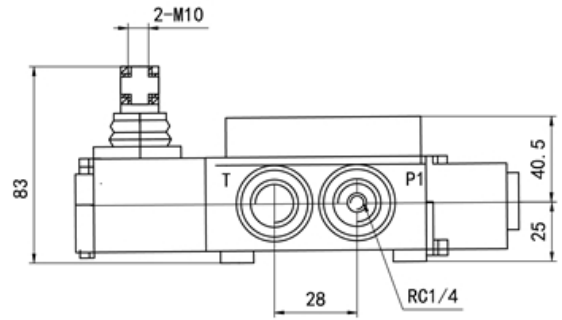
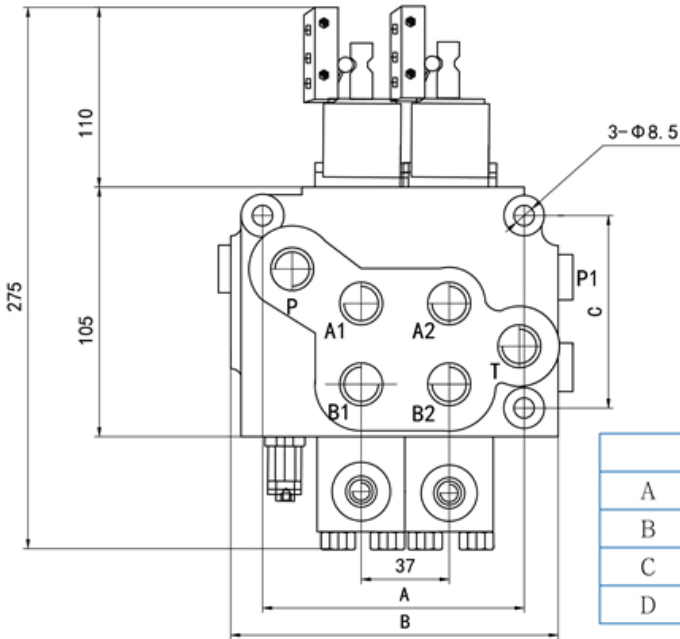


	1联	2联	3联	4联	N联
A	73	110	147	184	73+ (N-1) × 37
B	103	140	177	214	103+ (N-1) × 37
C	81	81	81	81	81
D	M18 × 1.5 OR G3/8				



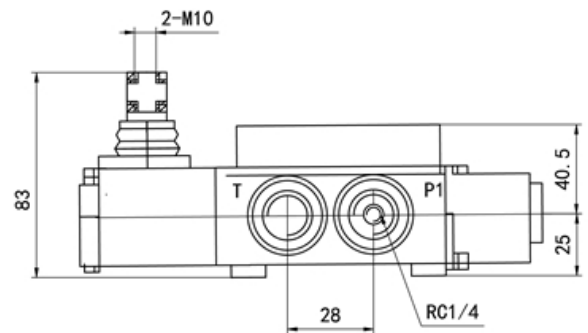
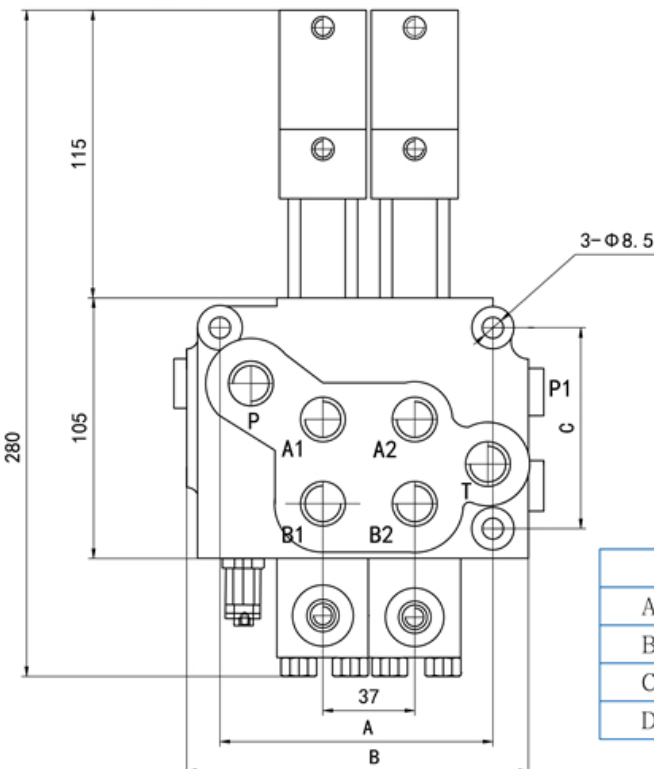
ZT-L12/WZT-L12/SQZT-L12系列 多路阀

• WZT-L12 外形图 OU-TLINE DIMENSIONS



	1联	2联	3联	4联	N联
A	73	110	147	184	$73 + (N-1) \times 37$
B	103	140	177	214	$103 + (N-1) \times 37$
C	81	81	81	81	81
D	M18 × 1.5 OR G3/8				

• SQZT-L12 外形图 OU-TLINE DIMENSIONS



	1联	2联	3联	4联	N联
A	73	110	147	184	$73 + (N-1) \times 37$
B	103	140	177	214	$103 + (N-1) \times 37$
C	81	81	81	81	81
D	M18 × 1.5 OR G3/8				

ZT-L20系列 多路换向阀

• 用途与特征 APPLICATION AND FEATURES

ZT-L20多路换向阀是我单位自主设计开发的一种中高压整体式多路换向阀。可按客户要求可在阀上设溢流阀、过载阀、单向阀、补油阀等。溢流阀可调节系统压力、过载阀控制单个油腔工作压力，单向阀防止油液倒流，换向阀滑阀机能A、O、Y、等，可任意组合，换向手柄有两种安装形式，便于不同方向的操作，该阀采用并联油路，设计有高压压力出口与其它液压元件相接提供动力源。经过特殊设计的密封方式，使阀的密封性能卓越。该阀广泛用于叉车、环卫车辆、小型装载机等工程机械的液压系统。本公司生产1到4路

ZT-L20 valve is designed by our company, which is medium-high pressure integrity way direction changed valve, over-flow valve, over load valve, single way valve and oil offset valve etc may be installed per different customer's requirements. Over-flow valve may adjust the system pressure. over-load valve may combined the working pressure of single oil cylinder, single oil valve is to prevent oil returning, direction changed valve function have A, O, Y, P etc, it may be combined random. The directional changed level has two installing ways for different operation. The valve is used parallel connection oil route It has pressure releasing outlet to connect other hydraulic components to provide power source. The sealing is specially designed with good sealing. The valve is widely used in the hydraulic system of forklift environment vehicle and light Loading machines. valves combination ,1-6 .



• 型号说明 MODEL CODING

ZT	-	L20	E	-	×	T	-	×	-	J
①		②	③		④	⑤		⑥		⑦

- ①产品代号Unit code
- ②公称通径Nominal size 20 mm 流量Nominal flow rate 90 (L/min)
- ③压力等级Pressure grade E: 16 MPa F: 20 MPa 最大压力 (MPa) Max. Pressure 31.5
- ④工作联数 job number
- ⑤复位方式Spool returning T: 弹簧复位Spring W钢球定位 (Steel ball positioning)
- ⑥滑阀机能Spool function A O Y
- ⑦省略为正常型号 Normal type带“J”为带压力输出 Output with pressure

• 外形图 OU-TLINE DIMENSIONS

