

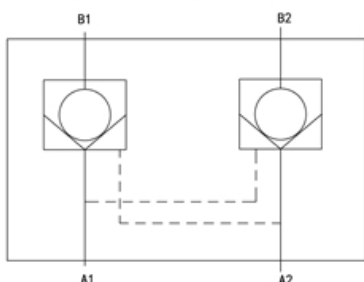
B 液压锁

• 用途与特征 APPLICATION AND FEATURES

双向液压锁工作原理是一个油腔正向不进油时，反向也不通，不受外界负荷干扰，起到双向保压的作用。公称压力31.5MPa，A1、A2是进油口，B1、B2是接油缸口。

Working principle of bidirectional hydraulic lock when an oil cavity is not in the oil, the reverse is not through, not subject to external load interference, play the role of two-way pressure preservation. Nom. Pressure (MPa) : H 31.5

• 符号 SYMBOL



• 型号说明 MODEL CODING

SYS	-	*	L	x	B	x	-	x
①		②	③	④	⑤	⑥		⑦

①产品代号 Unit code

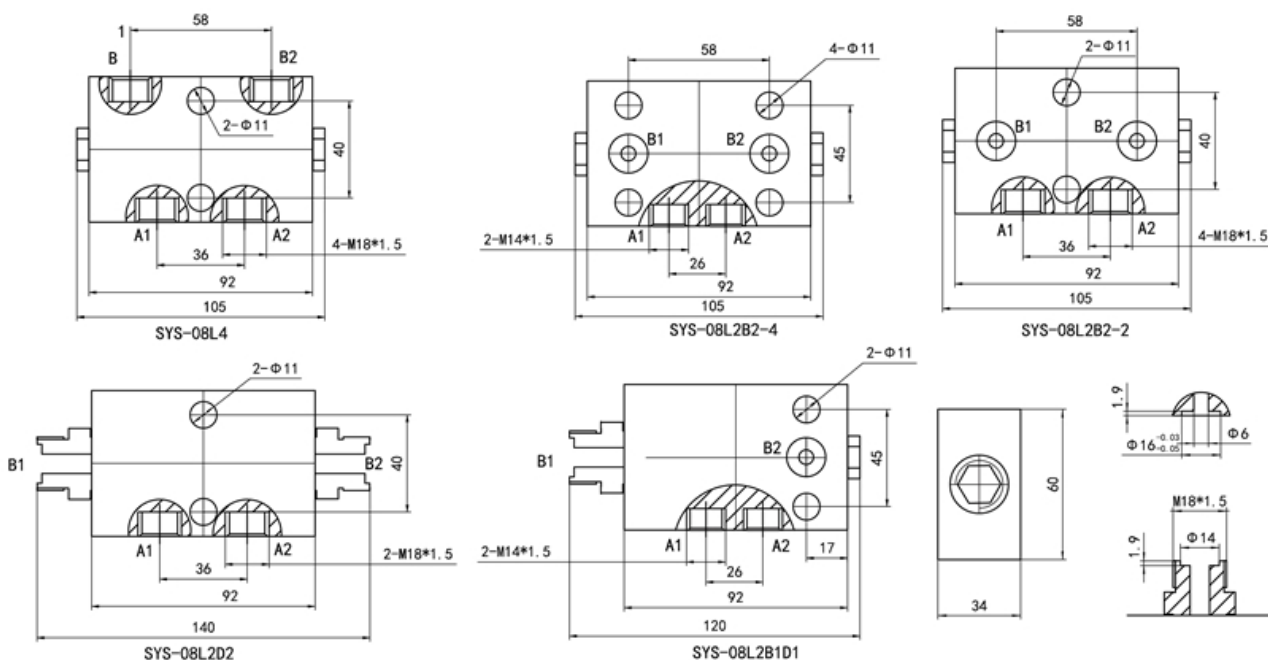
②公称口径 Nominal size 8 mm 流量Nominal flow rate 40 L/min
 Nominal size 10 mm 流量Nominal flow rate 40 L/min
 Nominal size 15 mm 流量Nominal flow rate 80 L/min
 Nominal size 20 mm 流量Nominal flow rate 100 L/min

③⑤管式L板式B顶端D LPipe install BPlate install D Top install

④⑥油口个数 Gob number

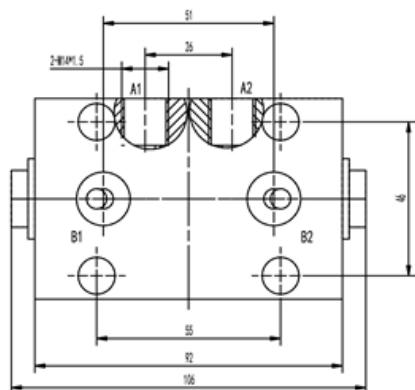
⑦安装孔个数 Install hole number

• 液压锁 外形图 OU-TLINE DIMENSIONS

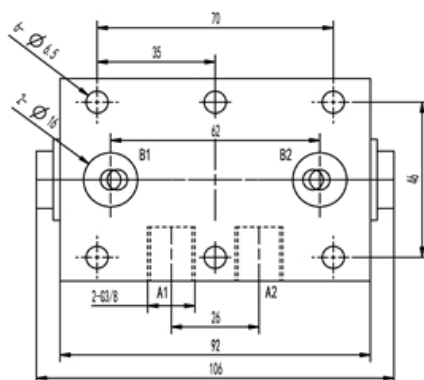


B 液压锁

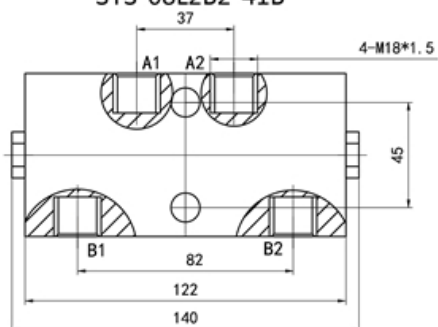
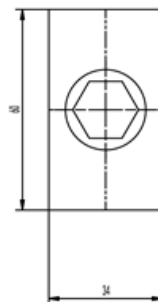
• 液压锁外形图 OUTLINE DIMENSIONS



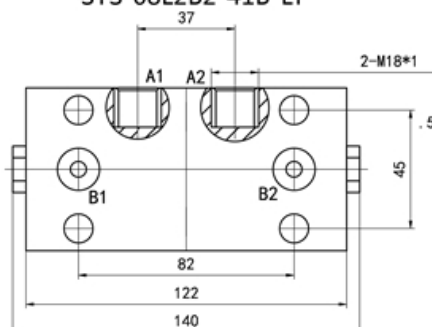
SYS-08L2B2-41B



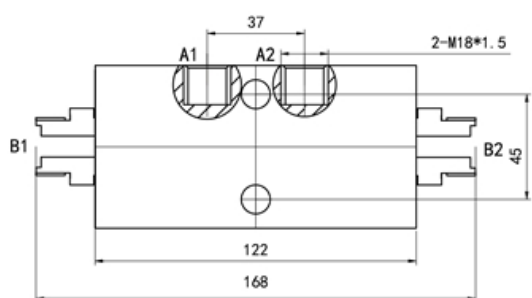
SYS-08L2B2-41B-LY



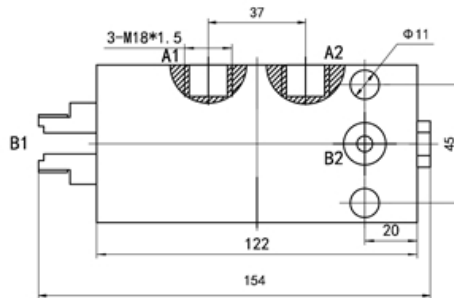
SYS-10L4



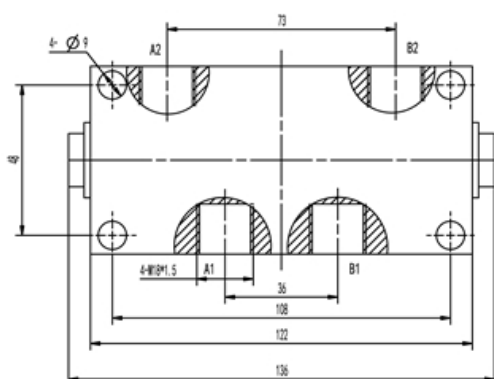
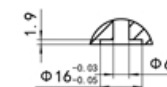
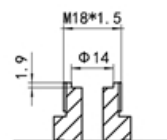
SYS-10L2B2



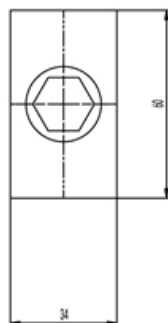
SYS-10L2D2



SYS-10L2B1D1

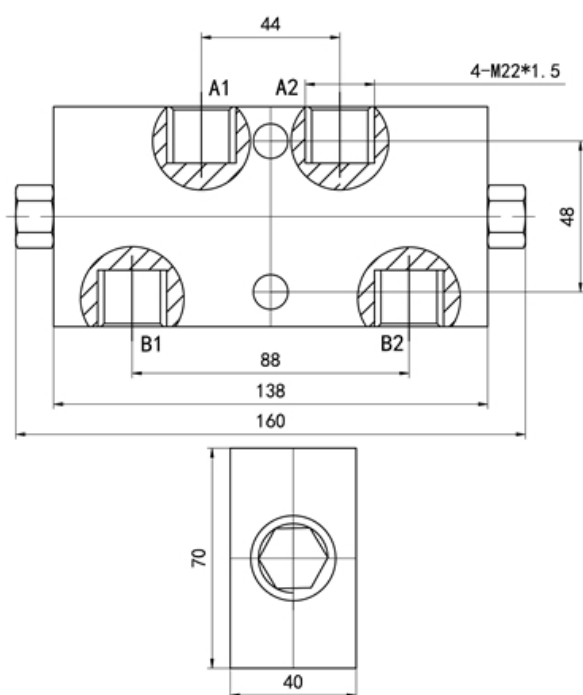


SYS-10L4-CQ

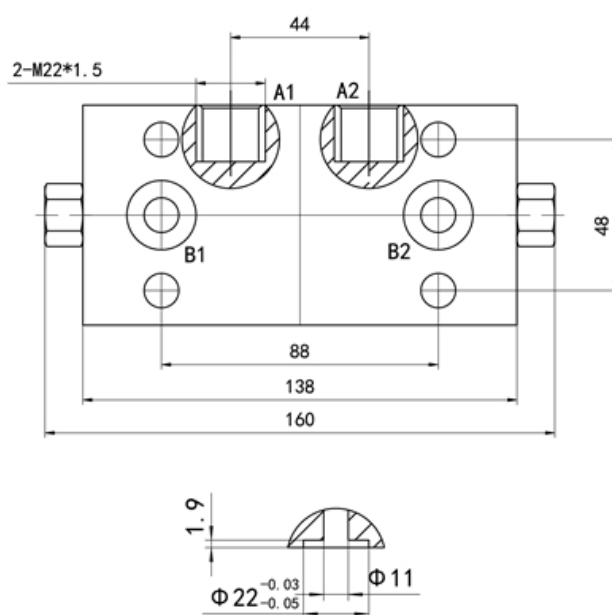


B 液压锁

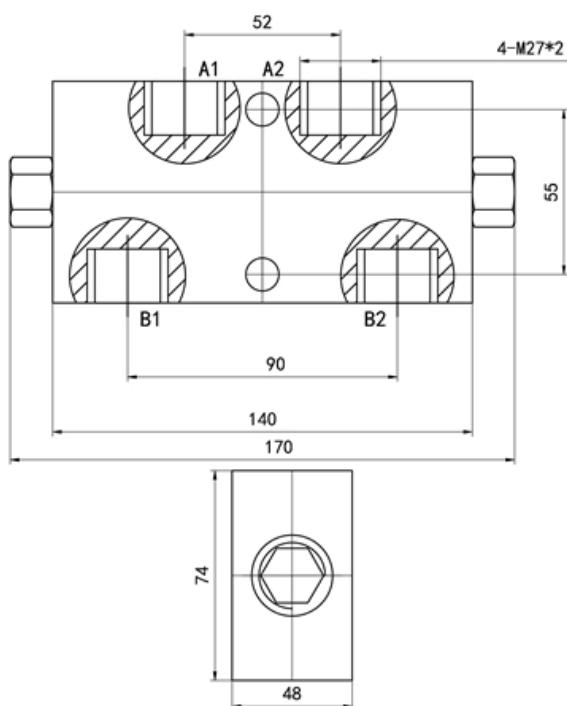
• 液压锁外形图 OUTLINE DIMENSIONS



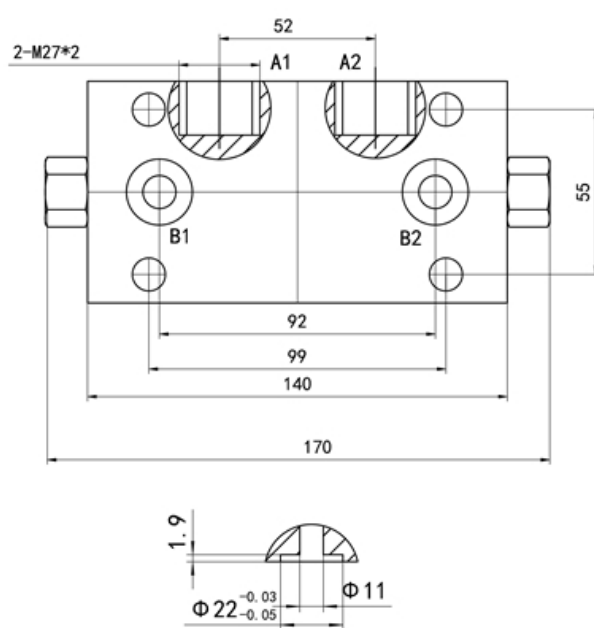
SYS-15L4



SYS-15L2B2



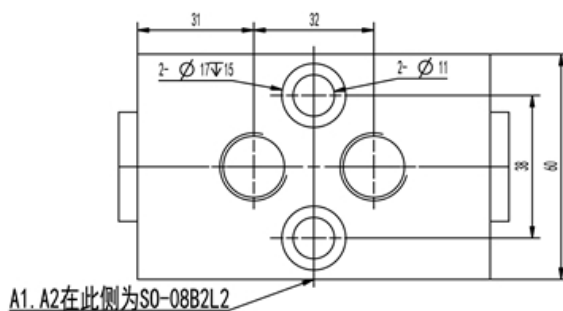
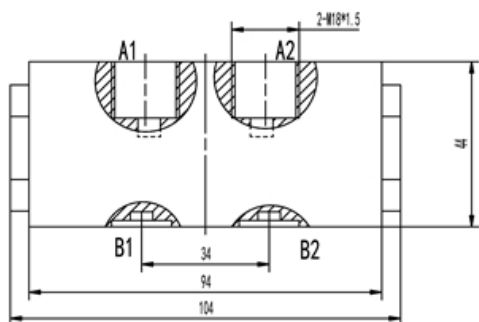
SYS-20L4



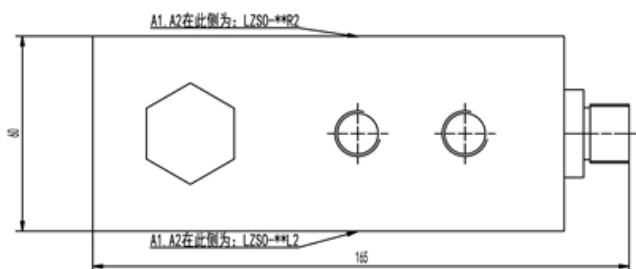
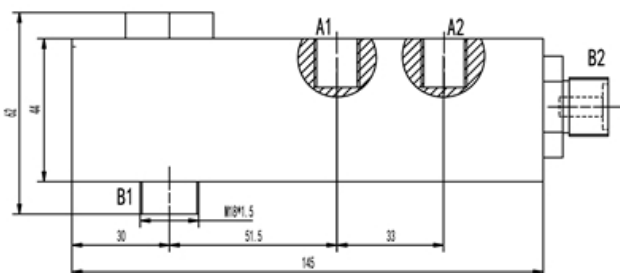
SYS-20L2B2

B 液压锁

• 液压锁外形图 OUTLINE DIMENSIONS

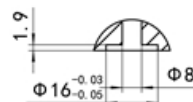
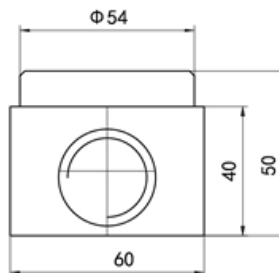
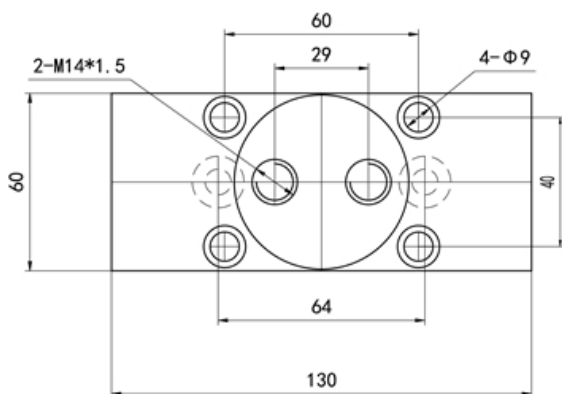


SO-H08B2M2 (L2)



	A1	A2	B1	B2
LZSO-08**	M14*1.5	M14*1.5	M18*1.5	M18*1.5
LZSO-10**	M18*1.5	M18*1.5	M18*1.5	M22*1.5

LZSO-08M2D1K1



长江型F42

B 锥阀式 液压锁

• 用途与特征 APPLICATION AND FEATURES

锥阀结构液压锁具有内泄小，性能更稳定，保压效果更好的特点。工作原理是一个油腔正向不进油时，反向也不通，不受外界负荷干扰，起到双向保压的作用。公称压力31.5MPa Poppet valve structure hydraulic lock has the characteristics of small internal leakage, more stable performance and better pressure holding effect. The working principle is that when the oil cavity does not feed oil in the positive direction, the reverse is not through, which is not interfered by the external load and plays the role of two-way pressure holding. Nominal pressure 31.5MPa

• 型号说明 MODEL CODING

ZFSYS	-	*	L	*	B	*	-	*
①		②	③	④	⑤	⑥		⑦

① 产品代号 Unit code

② 公称通径 Nominal size :

8mm

Nominal flow rate

流量: 40L/min

10mm

Nominal flow rate

流量: 40L/min

25mm

Nominal flow rate

流量: 160L/min

32mm

Nominal flow rate

流量: 240L/min

③⑤ 管式 Pipe instal : L

板式 B Plate install: B

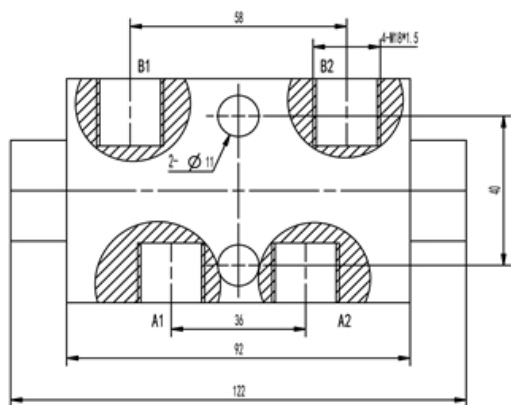
顶端D Top install : D

④⑥ 油口个数 Gob number

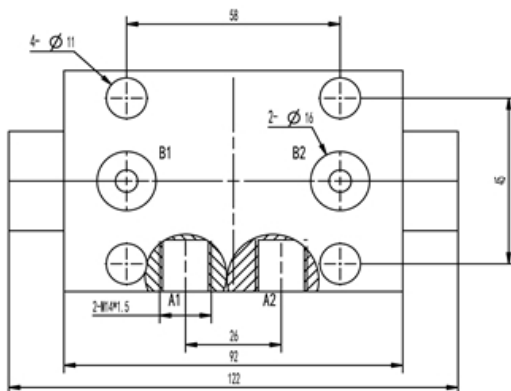
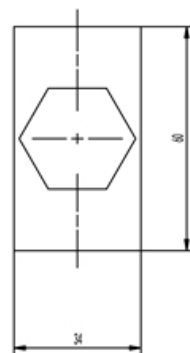
⑦ 安装孔个数 Install hole number



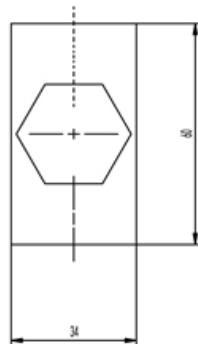
• 液压锁 外形图 OU-TLINE DIMENSIONS



ZFSYS-08L4-2

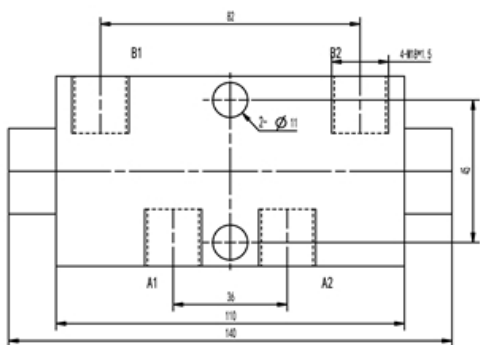


ZFSYS-08L2B2-4

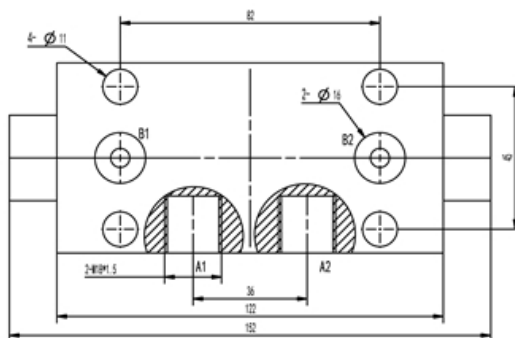


B 锥阀式 液压锁

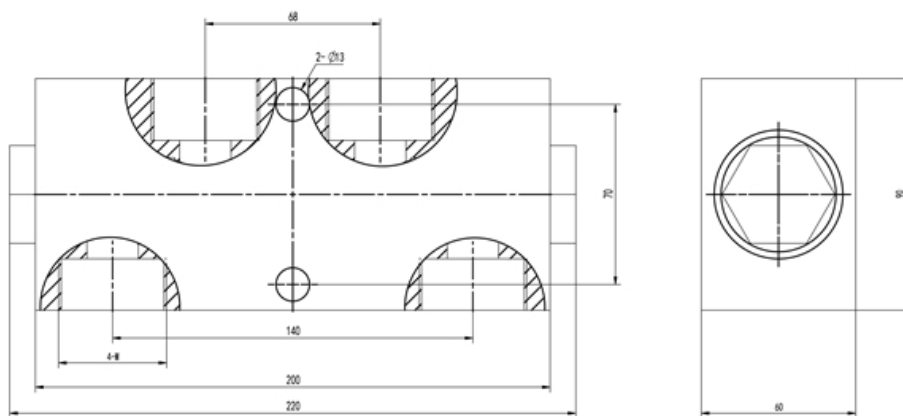
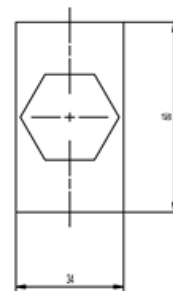
• 液压锁外形图 OUTLINE DIMENSIONS



ZFSYS-10L4-2

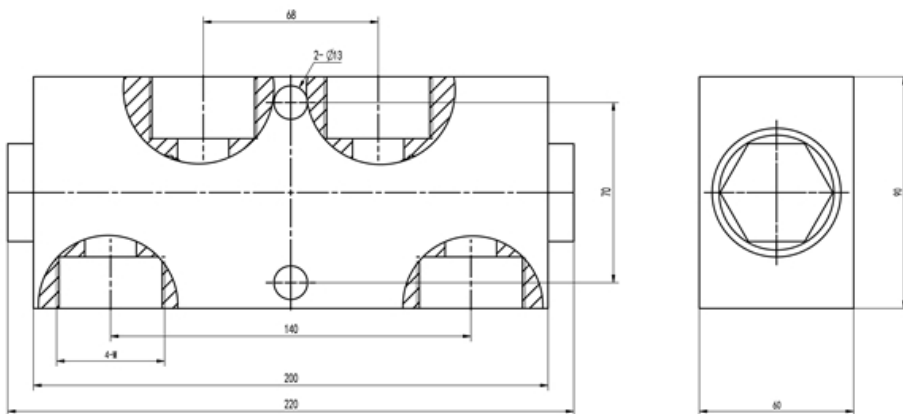


ZFSYS-10L2B2-4



ZFSYS-25L4-2	4-M	G1
	M33*2	

ZFSYS-25L4



ZFSYS-32L4-2	4-M	
	M42*2	

ZFSYS-32L4-2