

CBY2系列 高压齿轮泵

● 用途与特征 APPLICATION AND FEATURES

CBY2高压齿轮泵采用高强度球墨铸铁壳体，承载力高的专用轴承，特别设计的浮动补偿结构，具有压力高，转速范围宽，结构简单，性能可靠，使用寿命长。广泛适用于工程机械，矿山机械和起重机械等液压系统中。

CBY2 high-pressure gear pump using high-strength ductile iron shell, high bearing capacity of special bearings, specially designed floating compensation structure, with high pressure, wide speed range, simple structure, reliable performance, long service life. Widely used in construction machinery, mining machinery and lifting machinery and other hydraulic systems.

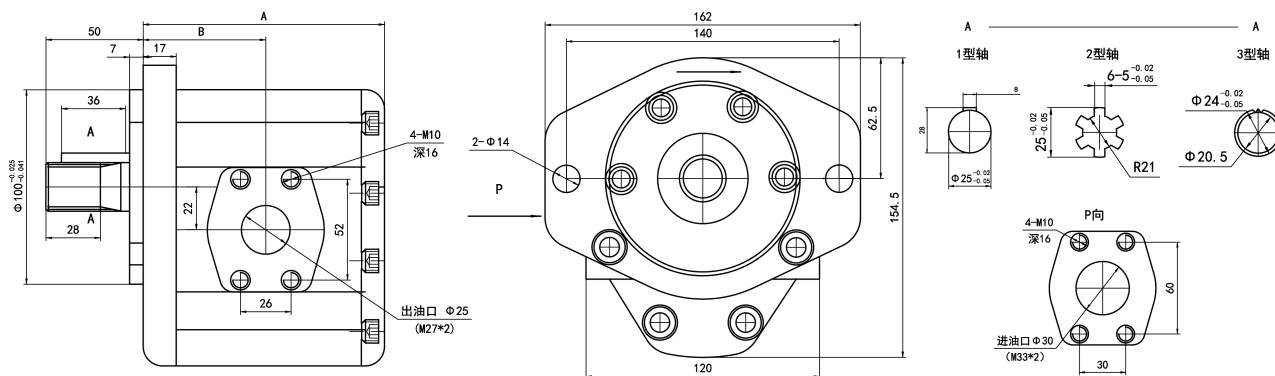


● 型号说明 MODEL CODING

CBY	-	2025	-	H	-	A	-	2	-	L	-	R
①		②		③		④		⑤		⑥		⑦

- ① 产品代号 Product code
- ② 公称排量 Disp (ml/r)
- ③ 压力等级 Pressure grade H: 28MPa G: 25MPa
- ④ 安装形式 Mounting A: 菱形法兰 Oval
- ⑤ 轴伸形式 Shaft end 1: 平 Plain key 2: 矩形花键 Rectangle spline
- ⑥ 油口形式 Joining port L: 螺纹连接 Screw F: 法兰连接 Flange
- ⑦ 旋向 Rotation 左旋 Left (逆时针 Counterclockwise) R: 右旋 Right (顺时针 Clockwise is omitted (省略))

● 外形图 OUTLINE DIMENSIONS



● 性能参数 SPECIFICATION

型号 Model	A (mm)	B (mm)
CBY2010	124	63
CBY2016	129.5	66
CBY2025	137.5	70
CBY2032	143.5	73
CBY2040	150.5	76

