

SQZD (ZS) -L20气动系列 多路换向阀

● 用途与特征 APPLICATION AND FEATURES

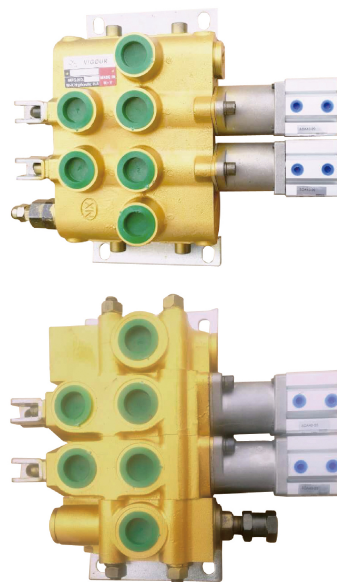
SQ20气动系列多路换向阀是我单位自主设计开发的一种中高压气动多路换向阀。具有压力高，防溢流阀堵塞等特点。换向阀滑阀机能A、O、Y、等，经过特殊设计的密封方式，使阀的密封性能卓越。该阀广泛用于环卫车辆等工程机械的液压系统。

It may be combined random. The directional changed level has two installing ways for different operation. The valve is used parallel connection oil route It has pressure releasing outlet to connect other hydraulic components to provide power source. The sealing is specially designed with good sealing. The valve is widely used in the hydraulic system of forklift environment vehicle and light Loading machines.

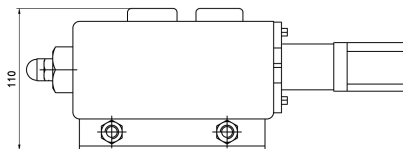
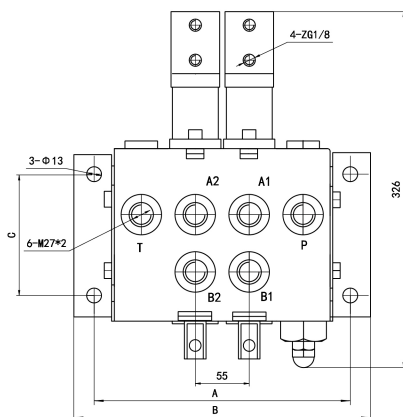
● 型号说明 MODEL CODING

SQ	ZD	-	L20	E	-	×	×
①	②		③	④		⑤	⑥

- ①手动气动控制 Spring and Pneumatic
- ②产品代号Unit code ZD整体Integral ZS分片Schistose
- ③公称通径Nominal size 20 mm 流量Nominal flow rate 100 (L / min)
- ④压力等级Pressure grade E: 16 MPa F: 20 MPa
- ⑤工作联数 job number
- ⑥滑阀机能Spool function A O Y

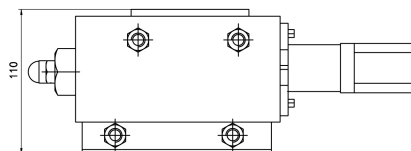
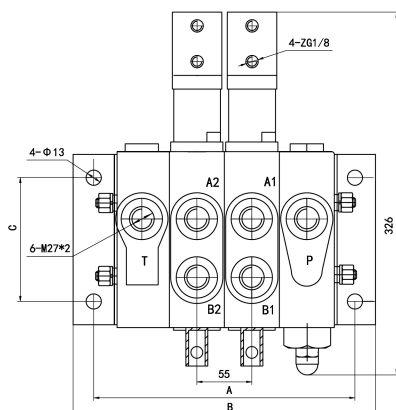


● SQZD-L20 外形图 OU-TLINE DIMENSIONS



	1联	2联	3联	4联
A	204	259	314	369
B	240	295	350	405
C	120	120	120	120

● SQZS-L20 外形图 OU-TLINE DIMENSIONS



	1联	2联	3联	4联	N联
A	204	259	314	369	204+ (N-1) × 55
B	240	295	350	405	240+ (N-1) × 55
C	120	120	120	120	120

ZS-L10/20/25系列 多路换向阀

● 用途与特征 APPLICATION AND FEATURES

ZS-L10/20/25系列多路换向阀是由进油体、回油体和换向阀体组合而成。它具有结构紧凑、工作压力高、性能可靠等特点。此阀最大特点是改用了直动式安全阀，解决了以往先导式安全阀容易堵死的缺点，使得多路阀的抗污性大大提高。广泛应用于叉车、装载机、挖掘机、起重机、压路机等工程机械及矿山、轻工、环卫、农机等行业。用以改变液流方向，实现多个执行机构的集中控制。本公司生产1到16路

ZS-L10/20/25 series multiple directional control valve consists of inlet body, oil returned body and inverting valve body. It has such characteristics as tight structure, high working pressure and reliable working performance. The main characteristic is to change pilot safety valve into direct-acting safety valve in case of blocking and to improve the resistant-contamination. This kind of valve is widely used in engineering machinery, mining, light industry, environmental and agricultural machinery, such as forklift, loading trucks, excavators, cranes and road rollers. It's used to change flow direction and to achieve the integrated control over several executive mechanism. It may be fixed with double operational hand shank, which is convenient for users. valves combination, 1-16 lever

● 型号说明 MODEL CODING

ZS	-	L*	E	-	×	T	-	×
①		②	③		④	⑤		⑥

①产品代号 Unit code

②公称通径 Nominal size 10 mm 流量 Nominal flow rate 40 (L / min)

Nominal size 20 mm 流量 Nominal flow rate 100 (L / min)

Nominal size 25 mm 流量 Nominal flow rate 160 (L / min)

③压力等级 Pressure grade E: 16 MPa F: 20 MPa 最大压力 (MPa) Max. Pressure

25

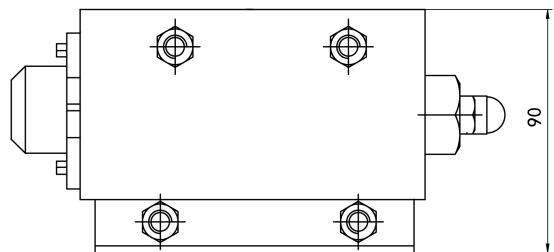
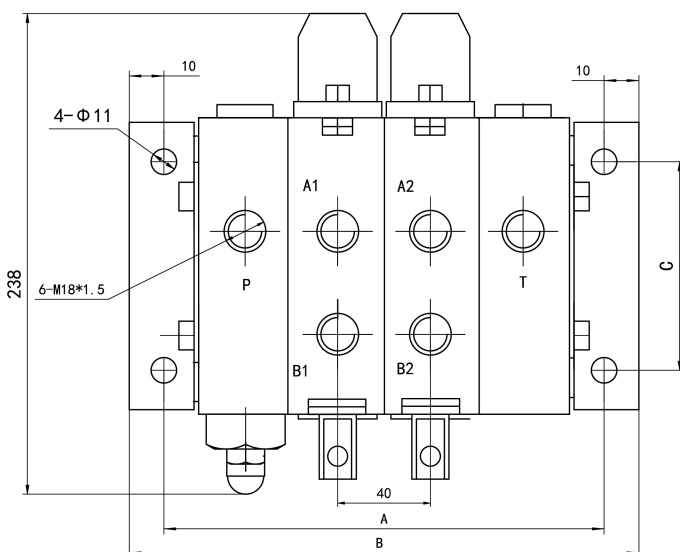
④工作联数 job number

⑤复位方式 Spool returning T: 弹簧复位 Spring W 钢球定位 (Steel ball positioning)

⑥滑阀机能 Spool function A O Y



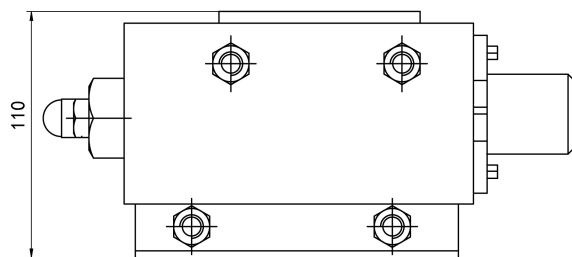
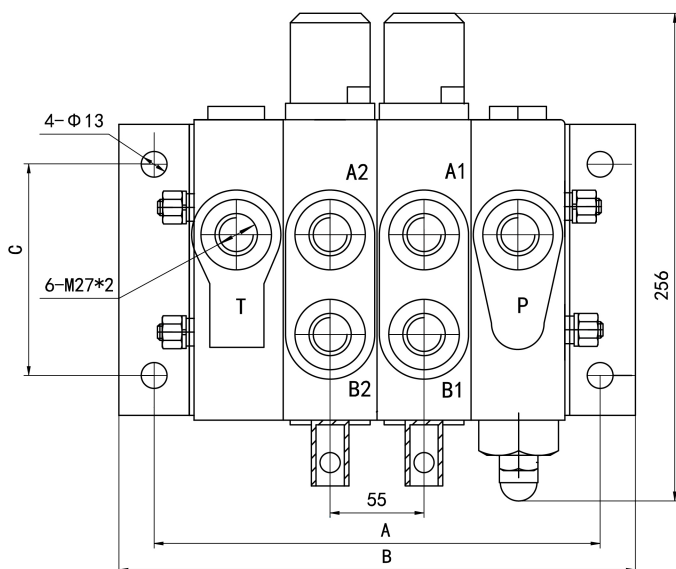
● ZS-L10 外形图 OUTLINE DIMENSIONS



	1联	2联	3联	4联	N联
A	156	196	236	276	156+ (N-1) × 40
B	180	220	260	300	180+ (N-1) × 40
C	100	100	100	100	100

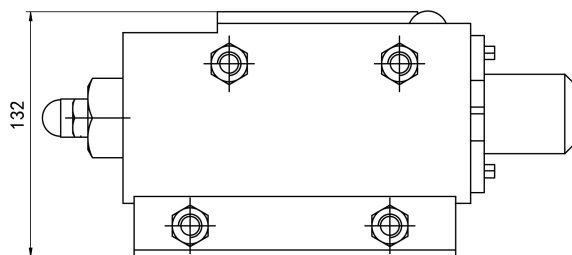
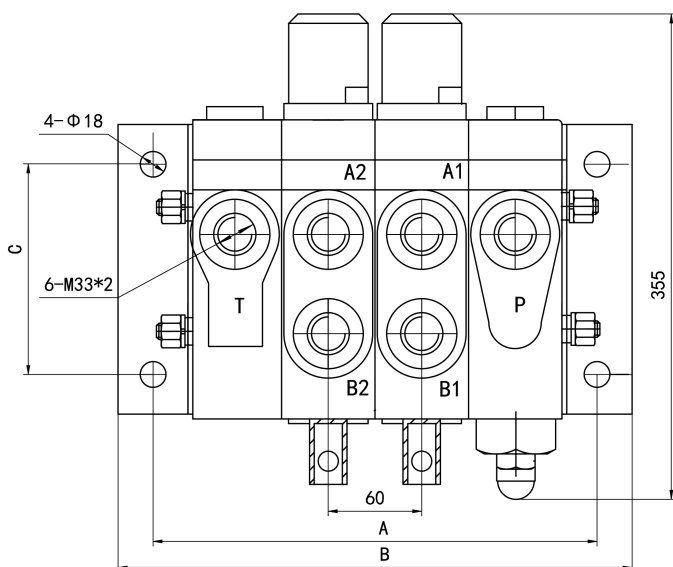
ZS-L10/20/25系列 多路换向阀

• ZS-L20 外形图 OU-TLINE DIMENSIONS



	1联	2联	3联	4联	N联
A	204	259	314	369	$204 + (N-1) \times 55$
B	240	295	350	405	$240 + (N-1) \times 55$
C	120	120	120	120	120

• ZS-L25 外形图 OU-TLINE DIMENSIONS



	1联	2联	3联	4联	N联
A	236	296	356	416	$236 + (N-1) \times 60$
B	280	340	400	460	$280 + (N-1) \times 60$
C	160	160	160	160	160