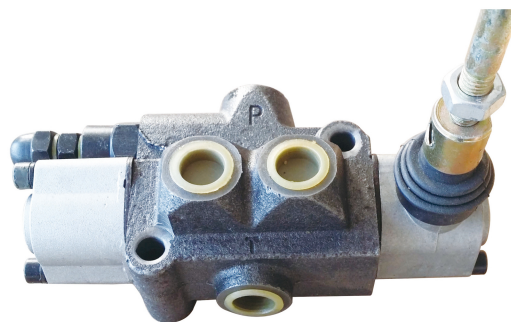


BDL40E 单联换向阀

● 用途与特征 APPLICATION AND FEATURES

BDL40E系列单路阀属于中高压整体式单路换向阀，内置安全阀控制系统压力，换向滑阀可实现三位四通的O、A、Y等机能。该阀具有结构紧凑，体积小，工作压力较高，性能好，工作可靠，使用维护方便等优点。广泛应用于小型工程机械、矿山机械、环卫机械和其它机械的液压系统。

It may be combined random. The directional changed level has two installing ways for different operation. The valve is used parallel connection oil route It has pressure releasing outlet to connect other hydraulic components to provide power source. The sealing is specially designed with good sealing. The valve is widely used in the hydraulic system of forklift environment vehicle and light Loading machines. valves combination,1-6



● 型号说明 MODEL CODING

BD	L40	E	T	×
①	②	③	④	⑤

①产品代号Unit code

②公称流量Nominal flow rate 40 (L / min)

③压力等级Pressure grade E: 16MPa F: 20MPa 最大压力 (MPa) Max. Pressure 31.5

④复位方式Spool returning T: 弹簧复位Spring W钢球定位 (Steel ball positioning)

⑤滑阀机能Spool function A O Y

● 外形图 OU-TLINE DIMENSIONS

