

CBG1系列 齿轮泵

● 用途与特征 APPLICATION AND FEATURES

CBG1型齿轮泵是一种中高压液压原件，结构简单，工作可靠，抗冲击性好，维修方便等特点，广泛用于工程机械，船舶机械，起重机械和矿山机械等液压装置上，是液压系统的动力元件。

CBG1 gear pump is a medium and high pressure hydraulic element, simple structure, reliable work, good impact resistance, convenient maintenance and other characteristics, widely used in engineering machinery, ship machinery, lifting machinery and mining machinery and other hydraulic devices, is a hydraulic system power components.

● 型号说明 MODEL CODING

CBG	1045	A	F	P	R
①	②	③	④	⑤	⑥

①产品代号 Product Codename

②公称排量 Nominal displacement (ml/r)

③安装形式 Installation form : A : 菱形安装 Diamond mounting

④油口形式 Port form : F : 法兰安装 Flange mounting

L : 螺纹安装 Threaded mounting

⑤轴伸形式 Shaft extension form : P : 平键 Flat key

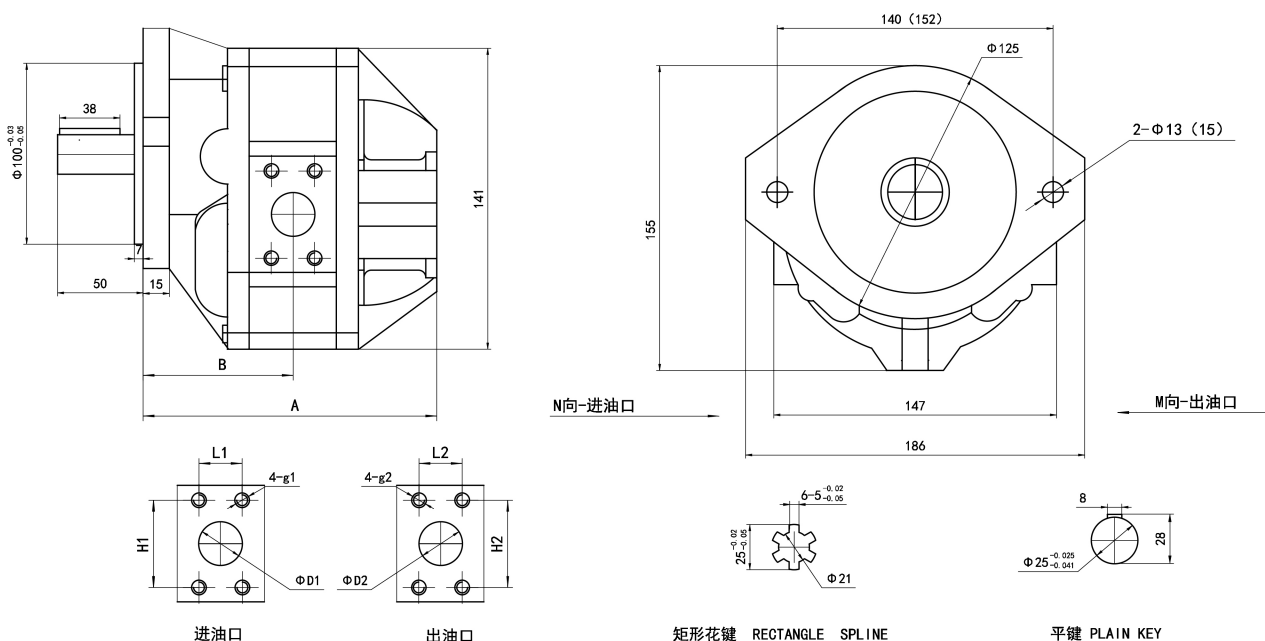
H : 花键 Splines

⑥旋向 Rotation direction : L : 左旋 levorotation

R : 右旋 dextrorotation (省略 omit)



● 外形图 OU-TLINE DIMENSIONS



● 性能参数 SPECIFICATION

型号 Model	A (mm)	B (mm)	进油口 Inlet (L1*H1-g1)	出油口 Outlet (L2*H2-g2)
CBG1016	144.5	71.75	22*48-M8	22*48-M8
CBG1020	148	73.5	22*48-M8	22*48-M8
CBG1025	153	76	22*48-M8	22*48-M8
CBG1032	159	79	26*52-M10	22*48-M8
CBG1040	166	82.5	26*52-M10	22*48-M8
CBG1045	170.5	84.75	26*52-M10	22*48-M8
CBG1050	175	87	26*52-M10	22*48-M8

CBG2系列 齿轮泵

• 用途与特征 APPLICATION AND FEATURES

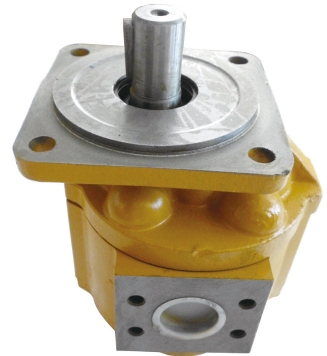
CBG2型齿轮泵是一种中、高压液压件，结构简单、工作可靠、抗冲击性能好、维修方便等特点，广泛应用于工程机械、船舶机械、起重机械和矿山机械等液压装置上，是液压系统的动力元件

CBG2 Gear pump is a medium and high pressure hydraulic parts, simple structure, reliable operation, good impact resistance, easy maintenance and other characteristics, widely used in engineering machine city, ship machinery, lifting machinery and mining machinery and other hydraulic devices, is the power components of the hydraulic system

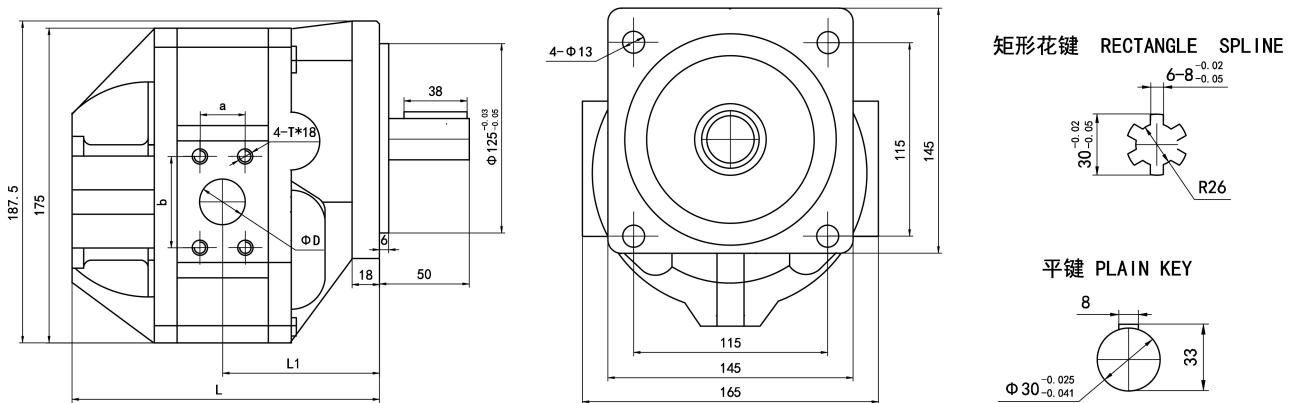
• 型号说明 MODEL CODING

CBG	-	2040	-	B	-	F	-	P	-	R
①		②		③		④		⑤		⑥

- ① 产品代号 Product code
- ② 公称排量 Nominal displacement (ml/r)
- ③ 安装形式 Mounting B: 方形法兰 Square
- ④ 油口形式 Joining port F: 法兰连接 Flange
- ⑤ 轴伸形式 Shaft end P: 平 Plain key H: 矩形花键 Rectangle spline
- ⑥ 旋向 Rotation 左旋 Left (逆时针 Counterclockwise) R: 右旋 Right (顺时针 Clockwise is omitted (省略))



• 外形图 OUTLINE DIMENSIONS



• 性能参数 SPECIFICATION

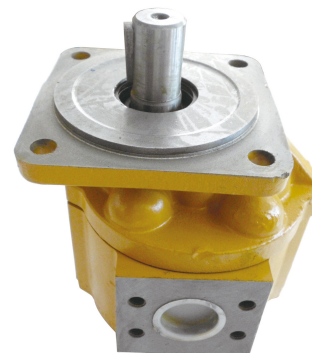
型号 Model	公称排量 (ml/r) Disp	压力 (MPa) ressure		转速 (r/ min) Speed		容积效率 Volumetric efficiency (≥%)	L mm	L1 mm	进油口 P Inlet				出油口 T Outlet			
		额定 Rated	最高 Max.	额定 Rated	最高 Max.				D mm	a mm	b mm	T	D mm	a mm	b mm	T
CBG2040	40	16	20	2200	2500	92	184	100.5	20	22	48	M10	18	22	48	M8
CBG2050	50						189.1	103.25	25	26	52	M10	20	22	48	M8
CBG2063	63						197	107	32	30	60	M10	25	26	52	M10
CBG2080	80						206.5	111.5	35	36	70	M12	32	30	60	M10
CBG2100	100					90	218	117.5	40							

CBG3系列 齿轮泵

● 用途与特征 APPLICATION AND FEATURES

CBG3型齿轮泵是一种中、高压液压件，结构简单、工作可靠、抗冲击性能好、维修方便等特点，广泛应用于工程机械、船舶机械、起重机械和矿山机械等液压装置上，是液压系统的动力元件

CBG2 Gear pump is a medium and high pressure hydraulic parts, simple structure, reliable operation, good impact resistance, easy maintenance and other characteristics, widely used in engineering machine city, ship machinery, lifting machinery and mining machinery and other hydraulic devices, is the power components of the hydraulic system

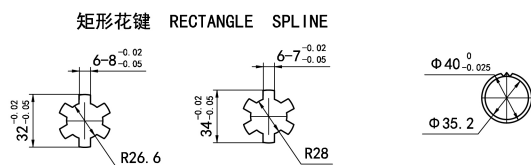
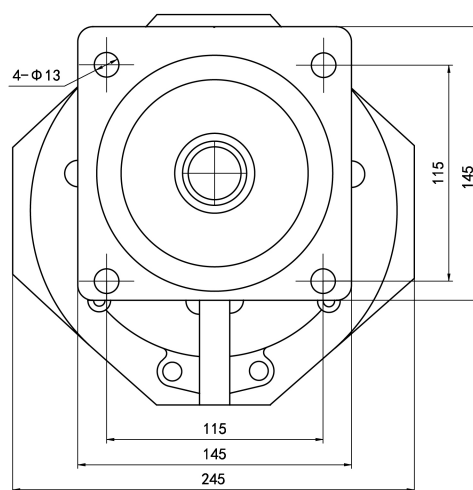
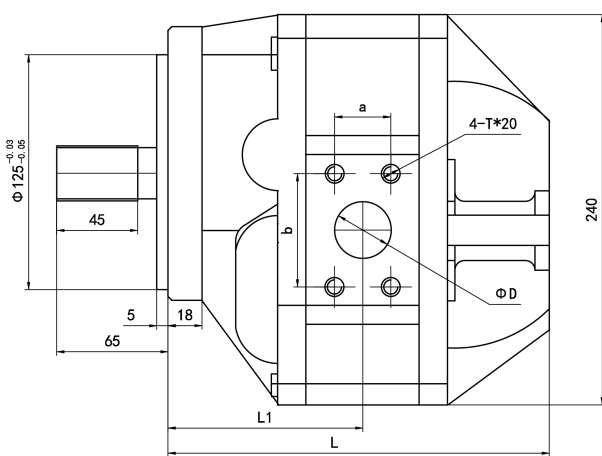


● 型号说明 MODEL CODING

CBG	-	3100	-	B	-	F	-	H	-	R
①		②		③		④		⑤		⑥

- ① 产品代号 Product code
- ② 公称排量 Nominal displacement (ml/r)
- ③ 安装形式 Mounting B: 方形法兰 Square
- ④ 油口形式 Joining port F: 法兰连接 Flange
- ⑤ 轴伸形式 Shaft end P: 平 Plain key H: 矩形花键 Rectangle spline
- ⑥ 旋向 Rotation 左旋 Left (逆时针 Counterclockwise) R: 右旋 Right (顺时针 Clockwise is omitted (省略))

● 外形图 OU-TLINE DIMENSIONS



模数	2
齿数	19
压力角	30°
分度圆直径	$\Phi 38$
精度等级	2

● 性能参数 SPECIFICATION

型号 Model	公称排量 (ml/r) Disp	压力 (MPa) Pressure		转速 (r / min) Speed		容积效率 Volumetric efficiency (\geq %)	L mm	L1 mm	进油口 P Inlet				出油口 T Outlet			
		额定 Rated	最高 Max.	额定 Rated	最高 Max.				D	a	b	T	D	a	b	T
CBG3100	100	16	20	2200	2500	92	202	103	35	30	60	M10	30	30	60	M10
CBG3125	125						209.5	106.7								
CBG3140	140						214	109								
CBG3160	160						220	112								

CBG2/2系列 多联齿轮泵

● 用途与特征 APPLICATION AND FEATURES

应用高强度球墨铸铁材料，滚针轴承支撑，轴向间隙采用自动补偿机构，使油泵能够连续长时间工作都具有高容积效率。

The application of high-strength ductile iron material, needle roller bearing support, axial clearance using automatic compensation mechanism, so that the oil pump can work continuously for a long time with high volumetric efficiency.



● 型号说明 MODEL CODING

CBG	—	2※	/	2※	—	※	※	※	※
①		②		③		④	⑤	⑥	⑦

① 产品代号 Product Codename

②③ 公称排量 Nominal displacement

④ 安装方式 Installation method

⑤ 油口形式: Port form

⑥ 轴伸形式 Shaft extension form :

⑦ 旋向 Rotation direction

B: 矩形 rectangle 115*115-125

F: 法兰连接 Flange connection

P: 单键 Single key

X: 渐开线花键 Involute spline

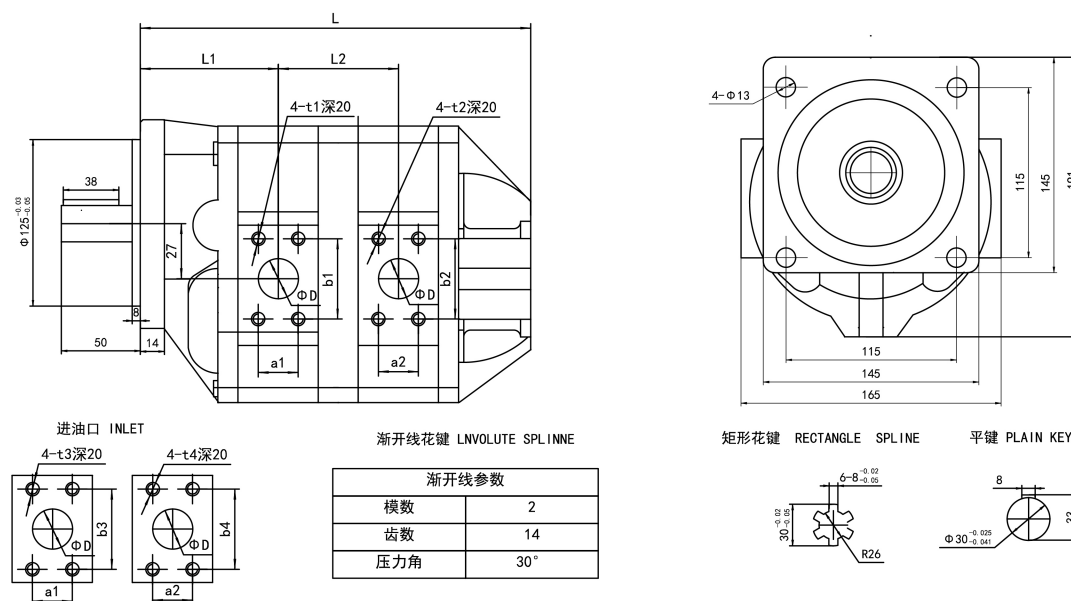
L: 左旋 levorotation

L: 螺纹链接 Threaded links

H: 矩形花键 Rectangular splines

R: 右旋 dextrorotation (省略omit)

● 外形图 OU-TLINE DIMENSIONS



● 性能参数 SPECIFICATION

型号 Model	公称排量 (ml/r) Displacement	额定压力 Rated (Mpa)	转速 (r/min) Speed			L1	L2	L	法兰尺寸 Flange size			
			最低 Min	额定 Rated	最高 Max				前泵进油 before pumping	前泵出油 pumped out before the front	后泵进油 After pumping the oil	后泵出油 After pumping out the oil
CBG2050/2050	50/50	20	600	2000	2500	110.5	126	320.5	26*52-M10	22*48-M8	26*52-M10	22*48-M8
CBG2063/2050	63/50					114.5	130	328.5	30*60-M10	26*52-M10		
CBG2063/2063	63/63					119.5	134	336.5			30*60-M10	26*52-M10
CBG2080/2050	80/50					119.5	135	338.5	36*70-M12	30*60-M10		
CBG2080/2063	80/63					119.5	139	346.5			36*70-M12	30*60-M10
CBG2080/2080	80/80					119.5	144	356.5	36*70-M12	30*60-M10		