

## C FMA系列液压同步马达

### • 用途与特征 APPLICATION AND FEATURES

液压同步马达也称为液压马达分流集流器，是采用高强度铝合金泵体，合金钢硬齿面传动，寿命长，耐高压，密封性好特点。

Hydraulic synchronous motor, also known as hydraulic motor shunt current collector, is the use of high-strength aluminum alloy pump body, alloy steel hard tooth surface transmission, long life, high pressure resistance, good sealing characteristics.



### • 型号说明 MODEL CODING

FMA	-	*	*
①		②	③

① 产品代号Product Codename

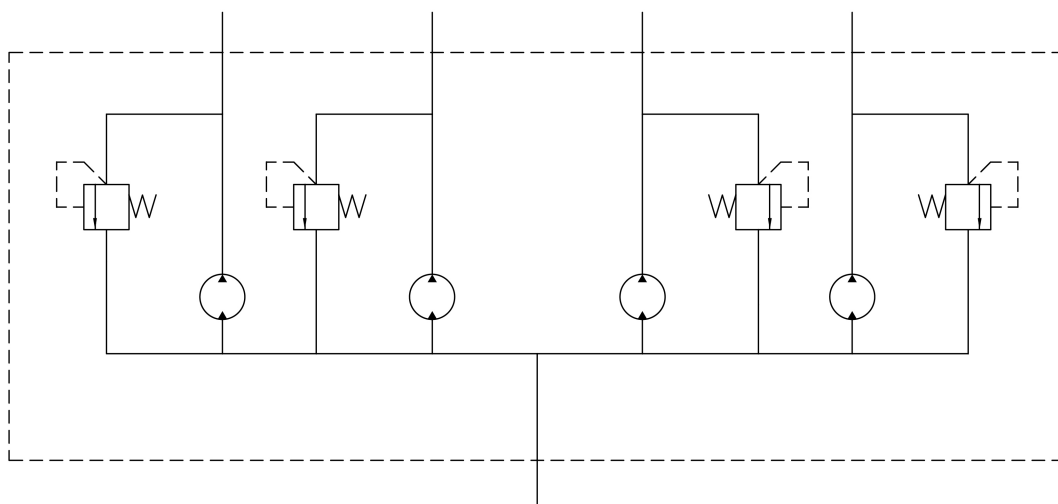
② 同步数量Number of synchronizations

③ 最大进油口流量Maximum inlet flow

R2.1: 40L/min  
R8.8: 80L/min

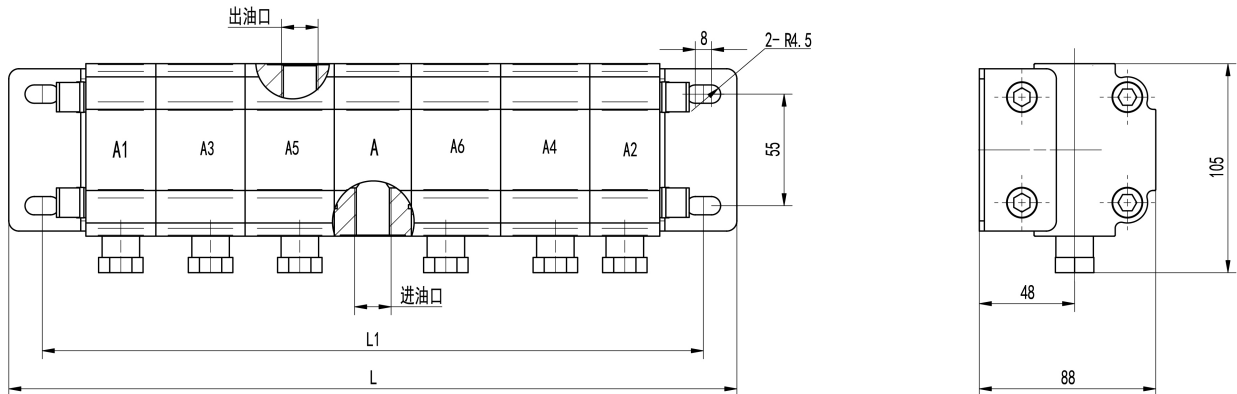
R4.2: 60L/min  
R16.88: 120L/min

### • C FMA系列液压同步马达原理图



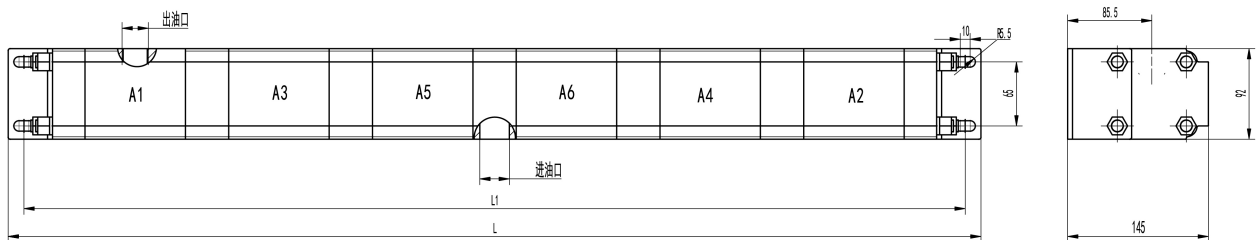
# C FMA系列液压同步马达

• C FMA系列液压同步马达 外形图 OU-TLINE DIMENSIONS



型号	排量 ml/r	最小进口流量 750rpm L/Min	标准进口流量 1500rpm L/Min	最大进口流量 3000rpm L/Min	出油口最大压力 Mpa	油口		安装尺寸		备注
						进油口	出油口	L	L1	
FMA-2R2.1	2.17	3.26	6.51	13.02	25	M18*1.5	M18*1.5	183	153	A1+A+A2
FMA-3R2.1		4.89	9.77	19.54				227	197	A1+A3+A+A2
FMA-4R2.1		6.51	13.02	26.04				271	241	A1+A3+A+++A4+A2
FMA-5R2.1		8.13	16.27	32.54				315	285	A1+A3+A5+A+A4+A2
FMA-6R2.1		9.77	19.54	39.08				359	329	A1+A3+A5+A+A6+A4+A2
FMA-2R4.2		4.34	6.51	13.02				26.04	M22*1.5	M18*1.5
FMA-3R4.2	9.77		19.54	39.08		249	220	A1+A3+A+A2		
FMA-4R4.2	13.02		26.04	52.08		301	271	A1+A3+A+++A4+A2		
FMA-5R4.2	16.27		32.54	65.1		352	322	A1+A3+A5+A+A4+A2		
FMA-6R4.2	19.54		39.08	78.12		404	374	A1+A3+A5+A+A6+A4+A2		
FMA-2R8.8	8.82		13.23	26.46		52.92	M27*2	M22*1.5		
FMA-3R8.8		19.84	39.69	79.38		295			265	A1+A3+A+A2
FMA-4R8.8		26.46	52.92	105.84	362	332			A1+A3+A+++A4+A2	
FMA-5R8.8		33.08	66.15	132.3	429	399			A1+A3+A5+A+A4+A2	
FMA-6R8.8		39.69	79.38	158.76	496	466			A1+A3+A5+A+A6+A4+A2	

• C FMA系列液压同步马达 外形图 OU-TLINE DIMENSIONS



型号	排量 ml/r	出油口最大压力 Mpa	油口		安装尺寸		备注
			进油口	出油口	L	L1	
FMA-2R18	18	25	G1	G3/4	404	382	A1+A+A2
FMA-3R18					550	528	A1+A3+A+A2
FMA-4R18					696	674	A1+A3+A+++A4+A2
FMA-5R18					842	820	A1+A3+A5+A+A4+A2
FMA-6R18					988	966	A1+A3+A5+A+A6+A4+A2