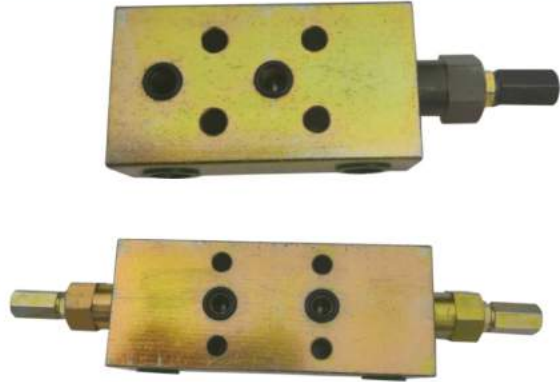


## A 平衡阀

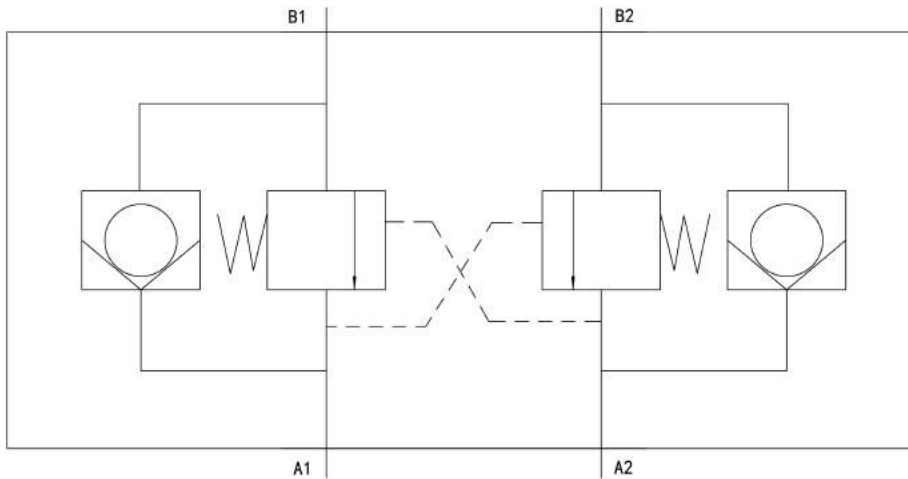
### • 用途与特征 APPLICATION AND FEATURES

平衡阀是压力控制阀，主要用于高空作业车、吊车、勾臂车的液压系统中。保证负载在某一位置上可靠停止和负载下降时运动的平衡性，防止负载超速下降。具有匀速运动和保压的作用。公称压力31.5MPa A1/A2是进油口 B1/B2 是接油缸口

The balance valve is a pressure control valve, mainly used in the hydraulic system of aerial vehicles, cranes and hook-arm vehicles. Ensure the balance of motion when the load is reliably stopped at a certain position and the load drops, preventing the load from speeding down. It has the function of uniform motion and retaining pressure. Nom. Pressure (MPa) : H 31.5

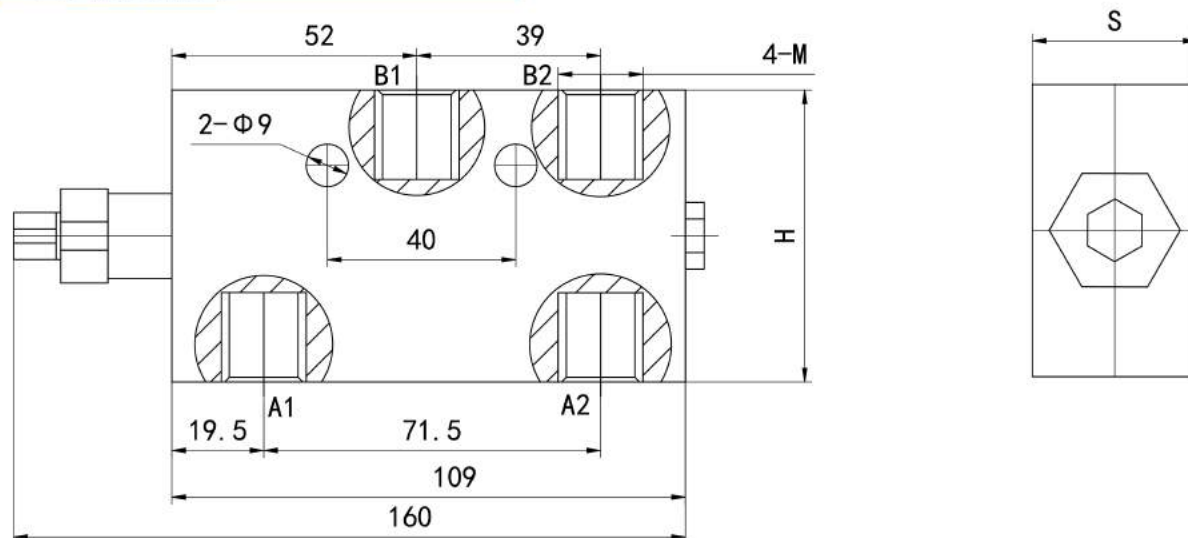


### • 符号 SYMBOL

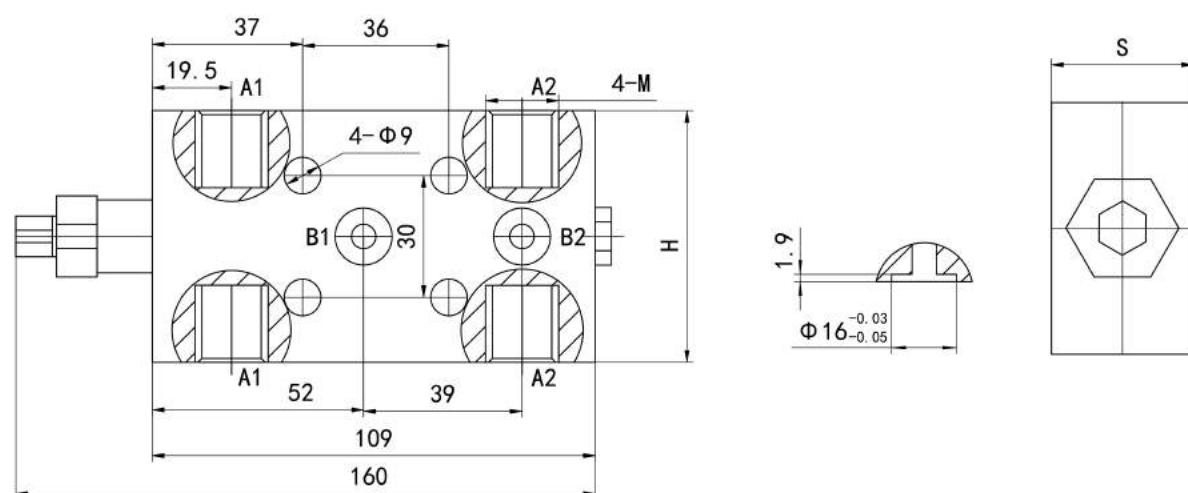


# A 平衡阀

## • 单向平衡阀 外形图 OUTLINE DIMENSIONS



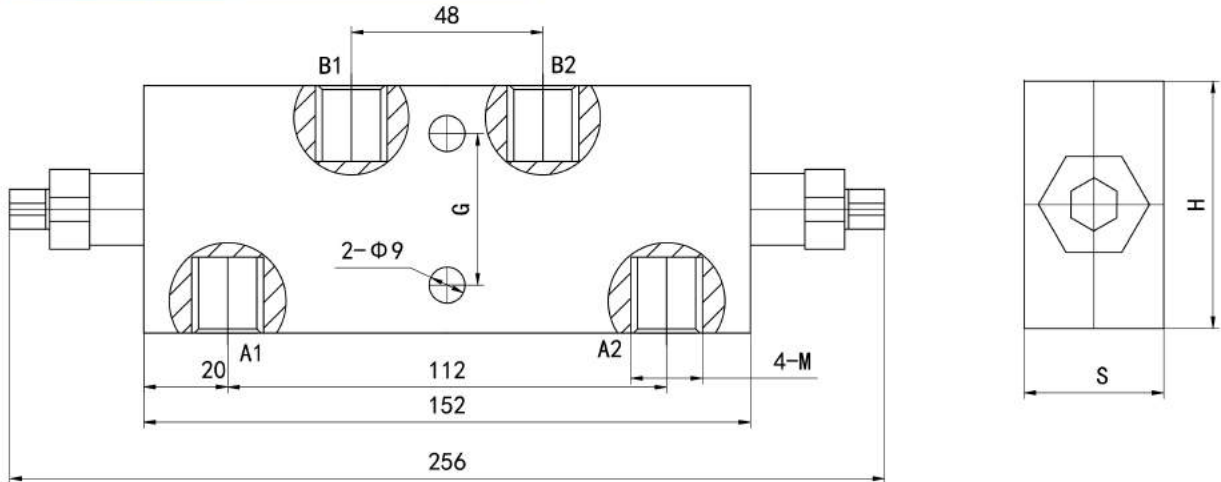
单向管式	最大压力	最大流量	4-M	S	H
15160A	32MPa	40L/Min	G3/8	34	60
15220A	32MPa	60L/Min	G1/2	34	60
15160B	32MPa	40L/Min	M18 × 1.5	34	60
15220B	32MPa	60L/Min	M22 × 1.5	34	60



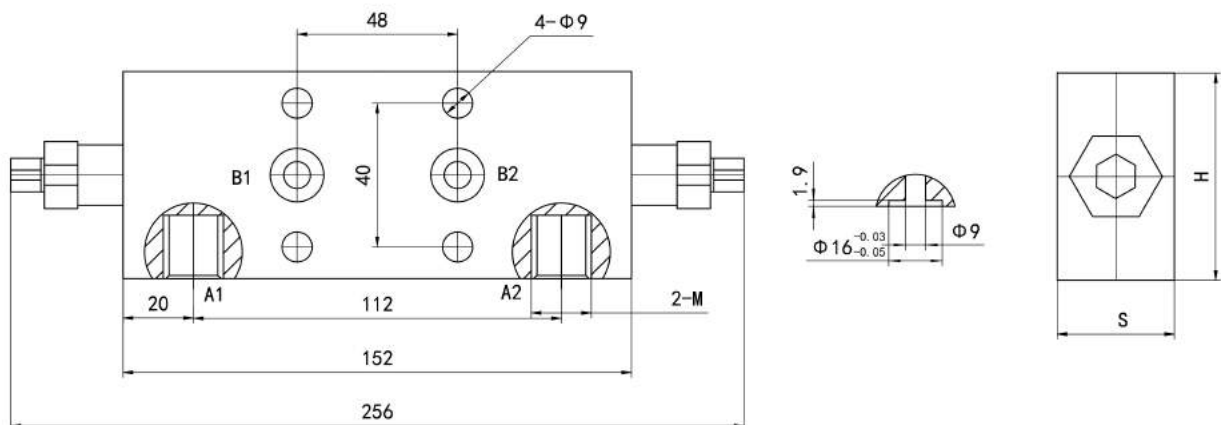
单向板式	最大压力	最大流量	2-M	S	H
15160AF	32MPa	40L/Min	G3/8	34	60
15220AF	32MPa	60L/Min	G1/2	34	60
15160BF	32MPa	40L/Min	M18 × 1.5	34	60
15220BF	32MPa	60L/Min	M22 × 1.5	34	60

# A 平衡阀

• 双向平衡阀 外形图 OUTLINE DIMENSIONS



双向管式	最大压力	最大流量	4-M	S	H	G
25160A	32MPa	40 L/Min	G3/8	34	60	38
25220A	32MPa	60 L/Min	G1/2	34	60	43
25160B	32MPa	40 L/Min	M18 × 1.5	34	60	38
25220B	32MPa	60 L/Min	M22 × 1.5	34	60	43



双向板式	最大压力	最大流量	2-M	S	H
25160AF	32MPa	40 L/Min	G3/8	34	60
25220AF	32MPa	60 L/Min	G1/2	34	60
25160BF	32MPa	40 L/Min	M18 × 1.5	34	60
25220BF	32MPa	60 L/Min	M22 × 1.5	34	60

## A 抗衡式 平衡阀

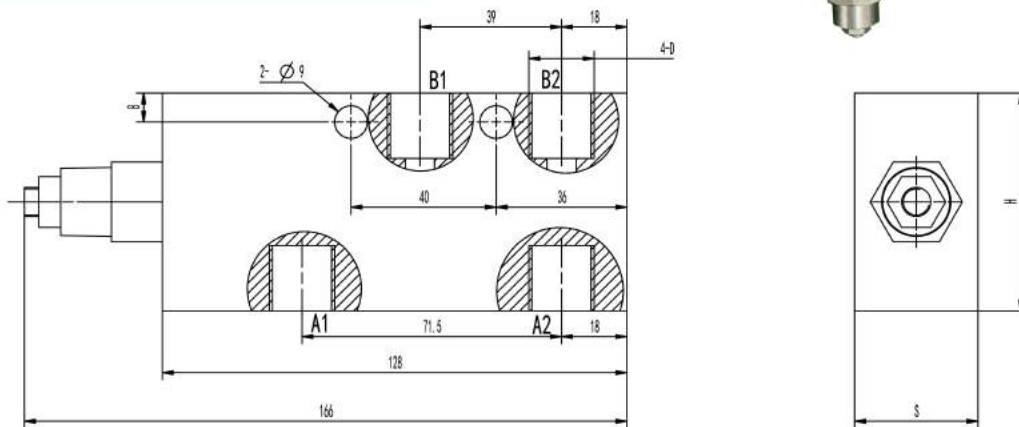
### • 用途与特征 APPLICATION AND FEATURES

抗衡式平衡阀是采用插装阀原理，开启比高，时间长内泄量更小，性能更稳定。主要用于高空作业车、吊车、勾臂车的液压系统中。保证负载在某一位置上可靠停止和负载下降时运动的平衡性，防止负载超速下降。具有匀速运动和保压的作用。公称压力31.5MPa A1/A2是进口口 B1/B2 是接油缸口。

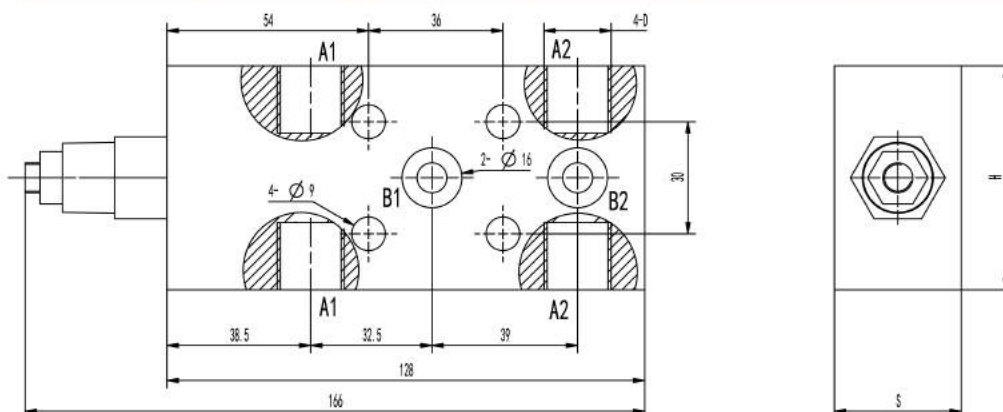
The counterbalance valve adopts the principle of cartridge valve, which has a high opening ratio, smaller internal discharge and more stable performance for a long time. It is mainly used in the hydraulic system of aerial work platforms, cranes and hook trucks. Ensure the balance of movement when the load is reliably stopped at a certain position and the load is dropped, and prevent the load from falling over the speed. It has the effect of uniform speed movement and pressure holding. The nominal pressure is 31.5MPa, A1/A2 is the oil inlet, and B1/B2 is the oil cylinder port.



### • 单向平衡阀 外形图 OUTLINE DIMENSIONS



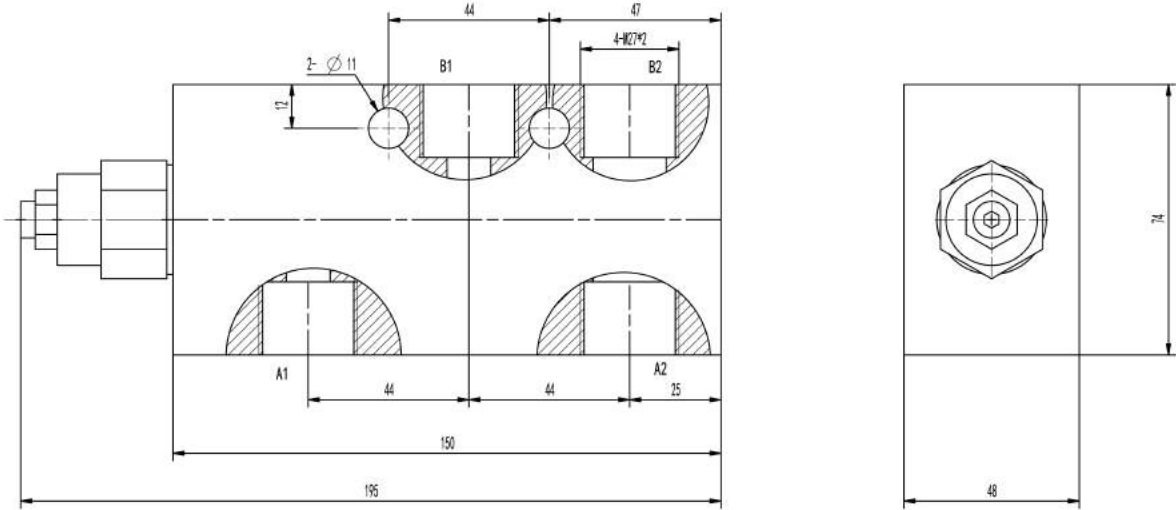
单向管式	最大压力	最大流量	4-D	S	H
KHVK15160A	32MPa	40L/min	G3/8	34	60
KHVK15160B	32MPa	40L/min	M18*1.5	34	60



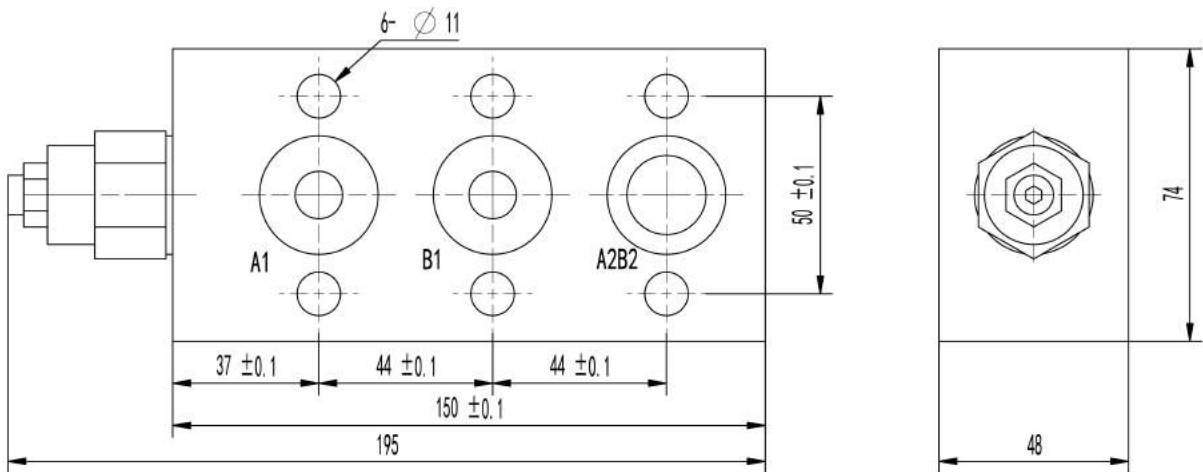
单向管式	最大压力	最大流量	4-D	S	H
KHVK15160A2	32MPa	40L/min	G3/8	34	60
KHVK15160B2	32MPa	40L/min	M18*1.5	34	60

# A 抗衡式平衡阀

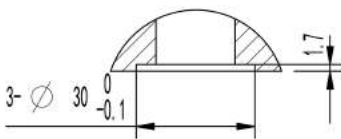
• 单向平衡阀 外形图 OUTLINE DIMENSIONS



单向管式	最大压力	最大流量
KHVK15330B	32MPa	100L/min

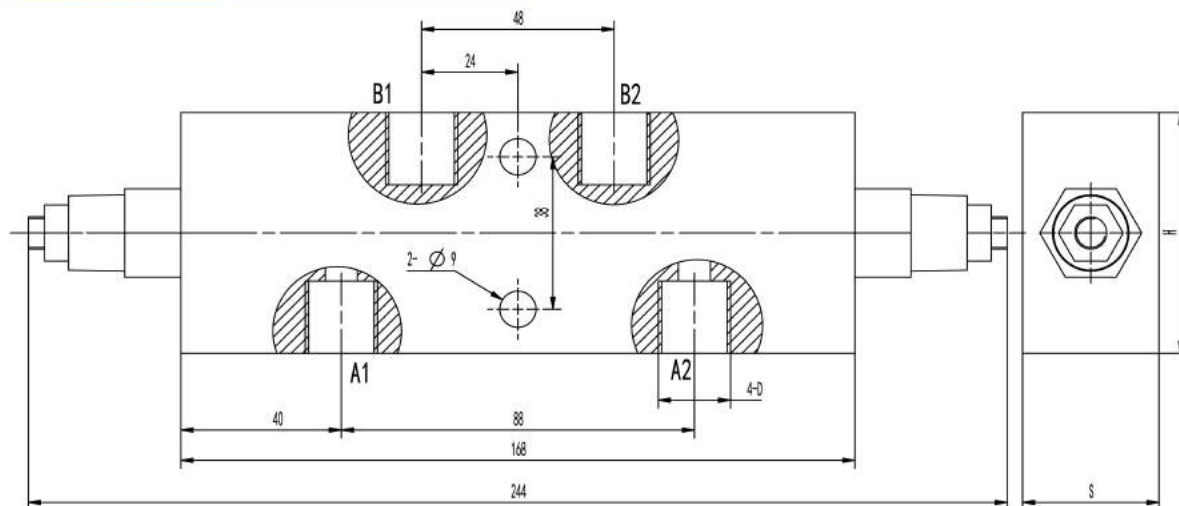


单向管式	最大压力	最大流量
KHVK15330B3	32MPa	100L/min

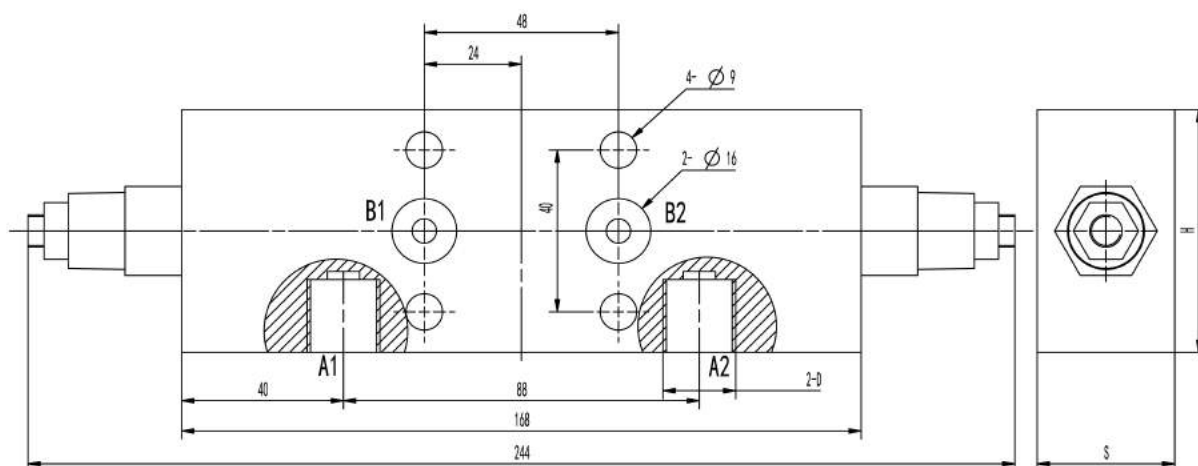


## A 抗衡式平衡阀

### • 双向平衡阀 外形图 OUTLINE DIMENSIONS



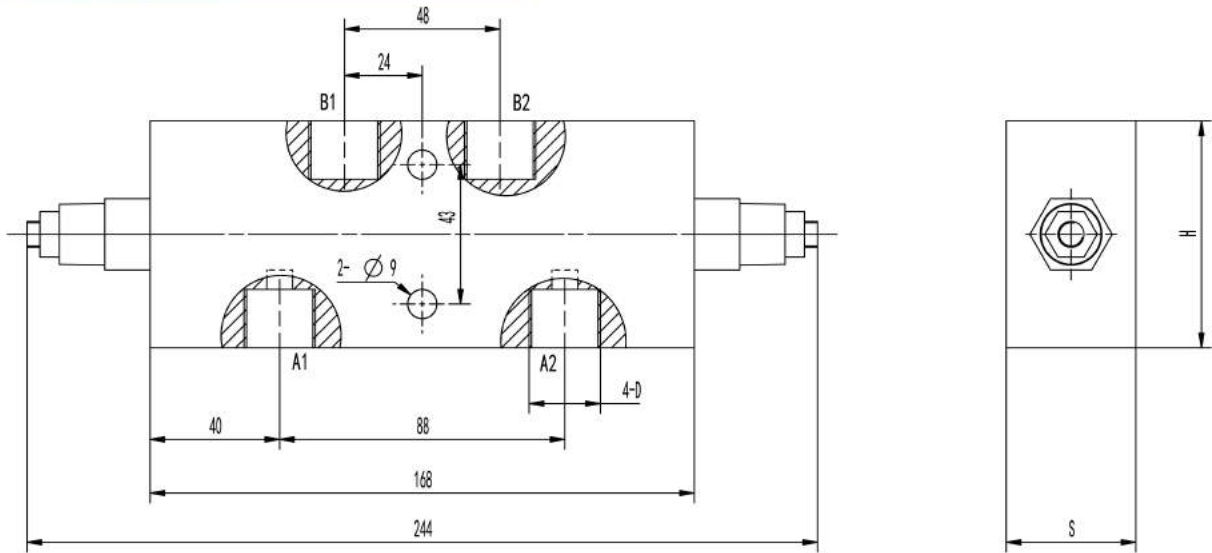
双向管式	最大压力	最大流量	4-D	S	H
KHWK25160A	32MPa	40L/min	G3/8	34	60
KHWK25160B	32MPa	40L/min	M18*1.5	34	60



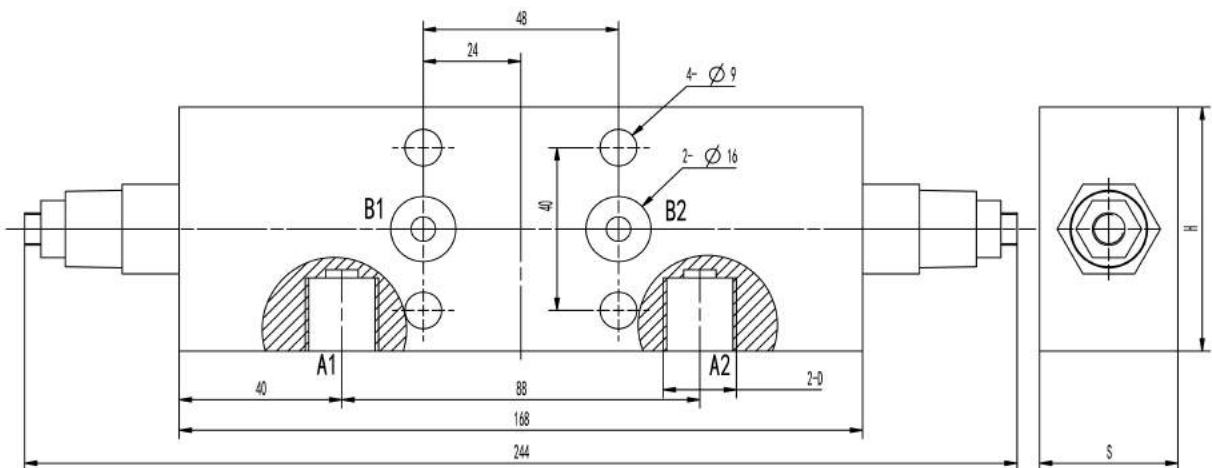
双向管式	最大压力	最大流量	4-D	S	H
KHWK25160A2	32MPa	40L/min	G3/8	34	60
KHWK25160B2	32MPa	40L/min	M18*1.5	34	60

## A 抗衡式平衡阀

• 双向平衡阀 外形图 OUTLINE DIMENSIONS



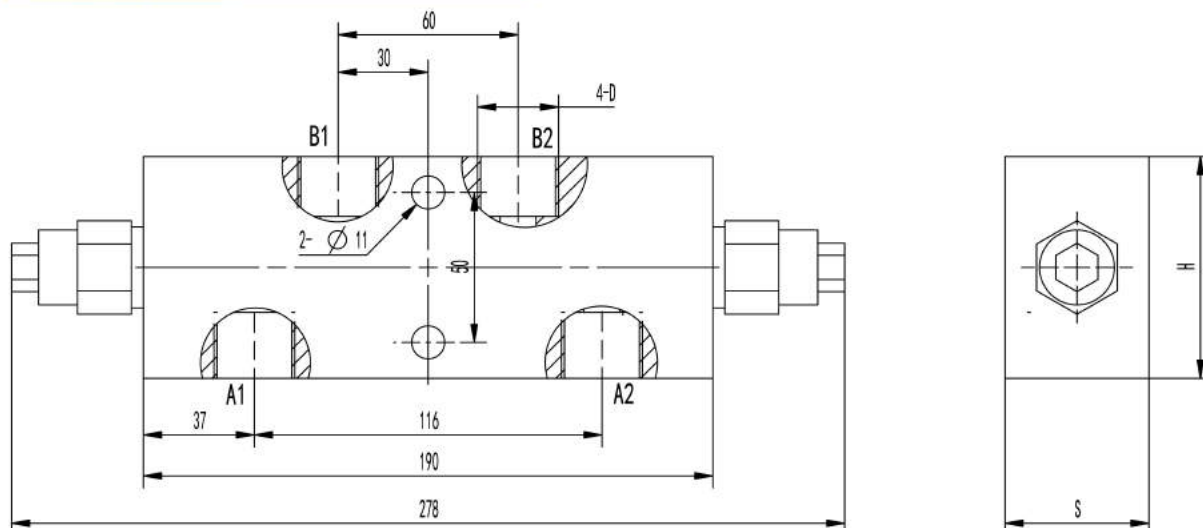
双向管式	最大压力	最大流量	4-D	S	H
KHWK25220A	32MPa	60L/min	G1/2	40	70
KHWK25220B	32MPa	60L/min	M22*1.5	40	70



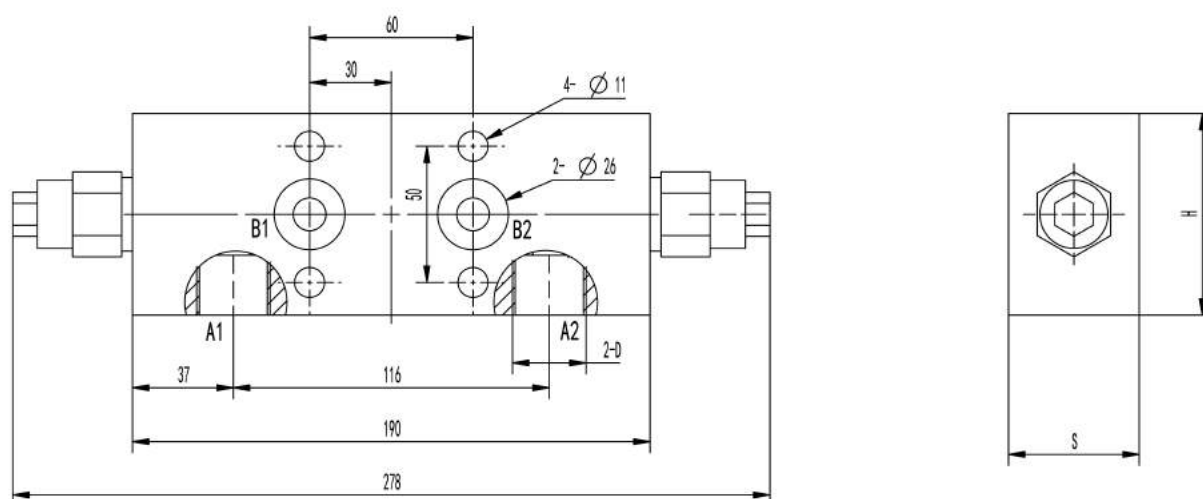
双向管式	最大压力	最大流量	4-D	S	H
KHWK25220A2	32MPa	60L/min	G1/2	40	70
KHWK25220B2	32MPa	60L/min	M22*1.5	40	70

## A 抗衡式平衡阀

### • 双向平衡阀 外形图 OUTLINE DIMENSIONS



双向管式	最大压力	最大流量	4-D	S	H
KHVK25330A	32MPa	100L/min	G3/4	48	74
KHVK25330B	32MPa	100L/min	M27*2	48	74

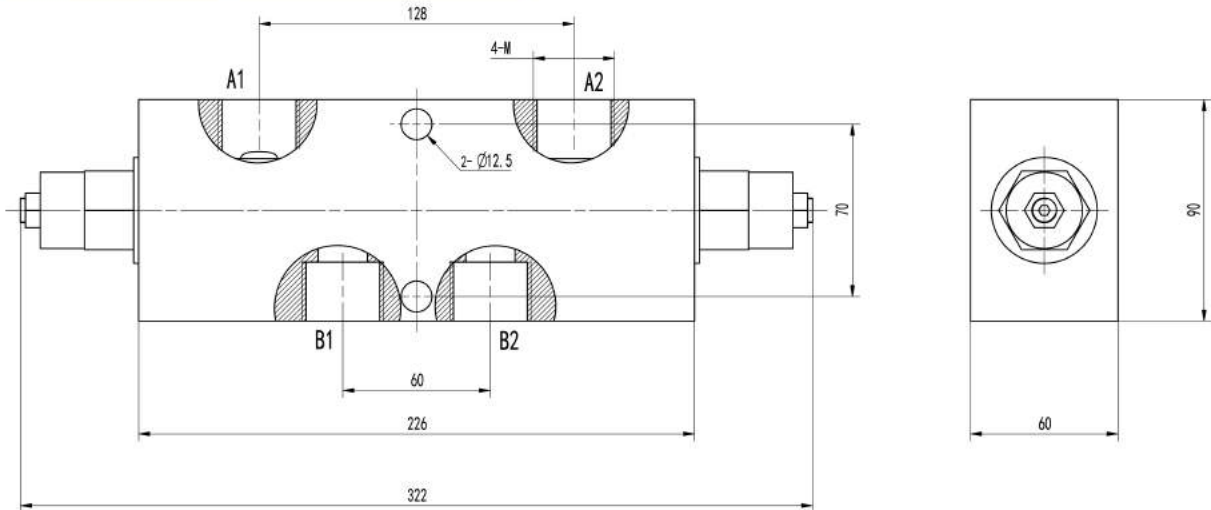


双向管式	最大压力	最大流量	4-D	S	H
KHVK25330A2	32MPa	100L/min	G3/4	48	74
KHVK25330B2	32MPa	100L/min	M27*2	48	74



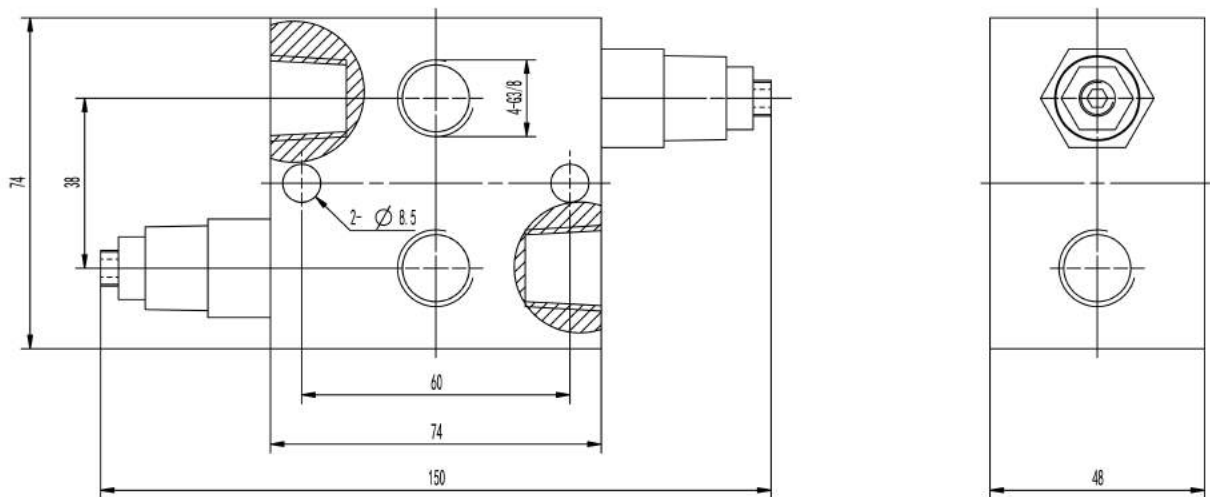
## A 抗衡式平衡阀

• 双向平衡阀 外形图 OU-TLINE DIMENSIONS



双向管式	最大压力	最大流量	4-D
KHVK25440A	32MPa	200L/min	G1
KHVK25440B	32MPa	200L/min	M33*2

• 双向平衡阀 外形图 OU-TLINE DIMENSIONS



WKPHY-08L4-2-SZ