

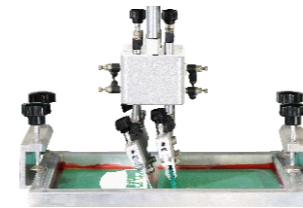
<p>全自动丝印 Screen printing machine</p>		<p>全自动烫金 Hot stamping machine</p>
	<p>SENNY PRINTING PACKING MACHINE</p>	
<p>全自动贴标 Labeling machine</p>		<p>全自动移印 Pad printing machine</p>

国内领先的集“喷码、贴标、视觉检测”
为一体的物联网追溯企业

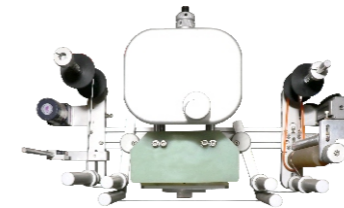
A leading enterprise of things traceability integrating
“code printing, labeling and CCD system”

SENNY

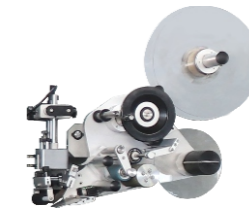
PRINTING PACKING MACHINE



丝印机
Screen-printing machines



烫印机
Hot-stamping machines



贴标机
Labeling machines



移印机
Pad-printing machines

———— 做优质的产品和服务 ————

东莞市生力印刷设备有限公司成立于2004年，并于2013年在香港注册成立香港生力集团有限公司。
DONGGUAN SENNY PRINTING EQUIPMENT CO.,LTD was founded in the year 2004, and in the year 2013, HONGKONG SENNY HOLDING CO.,LTD was registered in HONGKONG.

公司拥有从业20年以上的机电自动化设计、零件加工、设备组装及设备调试的工程师团队，配备多台精密CNC和其他各种加工设备，产品全部采用世界品牌电气元件及优质材料，力求为客户提供优质的产品和服务。

We have a great engineering team, who has engaged in mechanical designing, electrical designing and assembling for more than 20 years. To provide our customers with high quality machines and services, we have a number of precision CNC and other processing equipments. And we use all world name-brand electric parts within our machines.

生力经过多年的努力和发展，可以为全球用户提供高品质的自动化丝印、贴标、烫金、移印等精密印刷包装设备和服务，并且能够根据客户的需求量身定做自动化生产线。

With years of development, now SENNY could provide high-quality automatic screen printing machines, labelling machines, pad printing machine and other precision printing packaging lines and services. We also could make special printing packaging machines according to your special products and requirements.

———— DO HIGH QUALITY PRODUCTS AND SERVICES ————

www.senny.cc

E-mail: senny988@163.com



微信公众号二维码

东莞市生力印刷设备有限公司
地址：广东省东莞市常平镇田尾第一工业区
电话：0769-83752991 83752992
传真：0796-83752881

香港生力集团有限公司
香港荃湾西楼角路1-17号新领域广场13楼3室
电话：00852-21363363
传真：00852-81690207

Dongguan Senny Printing Equipment Co.,Ltd
THE FIRST INDUSTRIAL ZONE AT TIANWEI, CHANG PING, DONGGUAN, GUANGDONG, CHINA.
Tel: +86 0769-83752991 83752992
Fax: +86 0769-83752881

Hongkong Senny Holding Co., Limited
OFFICE UNIT NO.3 ON THE 13TH FLOOR OF GRAND CITY PLAZA NOS.1-17 SAI LAU KOK ROAD, TSUEN WAN, NEW TERRITORIES, HK.
Tel: 00852-21363363 Fax: 00852-81690207

制托、立进立出贴标、入托、装盒、纸盒对角封口贴标连线实例

Examples of connection of making tray, vertical in and vertical out labeling, traying, boxing and carton diagonal sealing & labeling

SENY
PRINTING PACKING MACHINE

该生产线由制托机、立进立出卧式圆瓶贴标机、入托机、装盒机、纸盒对角封口贴标机等设备组成。

该生产线适用于1-20ml安瓿瓶；7-20ml口服液瓶，无缝式完成贴标、印字、入托、装盒、对角封口。

全自动吹塑成型机完成制托，自动脱落的成型托盘通过皮带传动进入入托输送带，贴标后产品在入托储料缓冲仓进行等待，在伺服入托龙头处进行无缝式一对一入托，然后传送至装盒机进行自动装盒并对装盒后的产品进行对角封口贴1示，整个生产流程一气呵成。

The production line consists of making tray machine, vertical in and vertical out horizontal round bottle labeling machine, traying machine, boxing machine, carton diagonal sealing & labeling machine and other equipments.

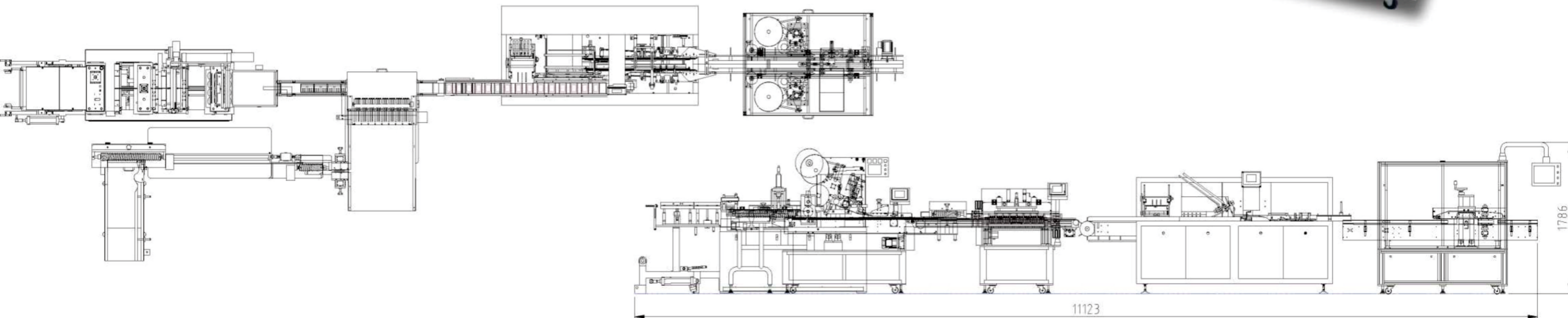
The production line is suitable for 1-20ml ampoules; 7-20ml oral liquid bottle, seamless completion of labeling, printing, traying, boxing, diagonal sealing.

The automatic blow molding machine completes the tray making, and the automatic falling off forming tray enters the support conveyor belt through the belt drive. After labeling, the products wait in the support storage buffer bin, and seamless one-to-one traying is carried out at the servo support tap, and then it is transmitted to the box filling machine for boxing, then sealing and labeling diagonally. The whole production process is completed in one production line.

技术参数:

technical parameter

外形尺寸(Machine dimensions)	(L)11123*(W)5474*(H)1786mm	
贴标物料尺寸(Material size)	1-20ml	7-20ml
瓶托规格(Bottle bracket size)	(L)≥30mm	(W)40-200mm
生产能力(Production Capacity)	60pcs/min (10bottles)	



ST-801

立式圆瓶贴标机

ST-801 Vertical labeling machine for cylindrical bottles

适用于医药、日化、食品行业的圆柱形包装容器上的自动贴标。

- 自动检测瓶子直径：自动调节参数，实现智能控制；
- 送料装置：可选配送（收）料盘，也可以直接配生产线使用；
- 印字设备：可灵活选配热转印，热汤印字机或者喷码机；
- 自动监测：有效防止倒瓶、漏贴、错贴、重贴等问题；

1. Automatic detection of bottle diameter: adjust the parameters automatically to realize intelligent control
2. Loading and Off-loading device: optional loading(off-loading) tray, also can be directly applied to the production line
3. Printing equipment: flexible selection of heat transfer printer, hot stamping printer or inkjet printer
4. Automatic detection: effectively prevent bottle pouring, missing sticking, wrong sticking, re-sticking and other problems

技术参数

technical parameter

外形尺寸 Machine dimensions	(L)1920mm*(W)1670mm*(H)1390mm
物料尺寸 Bottles' diameter	20-90mm
贴标规格 Labeling speed	300pcs/min
贴标机精度 Labeling machine accuracy	±0.5mm



ST-812

顶底贴标机

ST-812 Labeling machine to sticker top and bottom part

适用于日化、医药、电子、食品等行业的产品或外包装盒的顶底面自动贴标。通过调节可适用不同规格的物体贴标，增加手动扶标结构，可实现顶底面拐角贴标。

- 人性化触摸屏，操作方便、直观，具有丰富的帮助功能和故障显示功能。
- 贴标参数储存：根据不同的物体或标签可以预先设置并将参数存储，以后可以直接调用，不用每次都设置。
- 动力夹带使贴标定位更精确。
- 可灵活选配热转印、热汤印字机或喷码机，同步完成打码及贴标。
- 可增加机器视觉监测系统，自动检测打印的日期批号等。有效防止可能因标签卷所引起的漏贴标、错贴、重贴等问题。
- 标签智能管理，标签快用完时会报警或停机。
- 送标器采用进口大力矩小惯性马达驱动，瑞士金沙刚辊技术，永不变形，摩擦力极好，大包角确定不打滑的特点保证了送标功能的高精度运行。
- 采用世界知名品牌进口元件，确保整机的稳定和可靠性。

It is suitable for the top and bottom surface of products or outer packaging boxes in daily-use chemical, pharmaceutical, electronic, food and other industries.

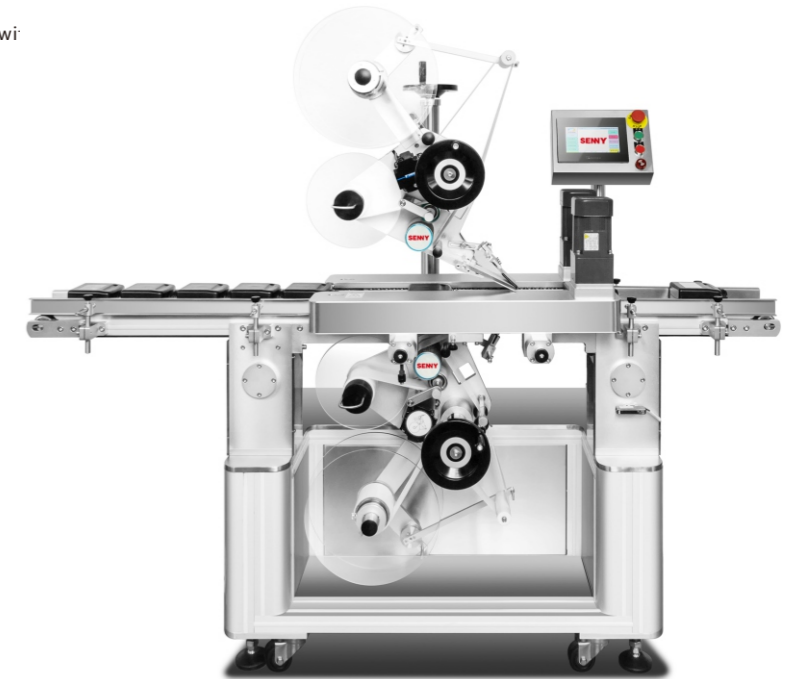
It can be applied to different specifications of object by adjusting, and the top and bottom corner labeling can be realized by adding manual label supporting structure.

1. The user-friendly touch screen is easy to operate and intuitive, with rich help functions and fault display functions.
2. Labeling parameter storage can be preset and stored according to different objects or labels. It can be called directly later without setting it every time.
3. The power band makes the label positioning more accurate.
4. Flexible selection of heat transfer printer, hot stamping printer or inkjet printer, synchronous completion of coding and labeling.
5. Machine vision monitoring system can be added: automatic detection of printed date, batch number, etc. It can effectively prevent the missing labels, wrong labels, re-labels and other issues which may be caused by the label volume.
6. Label intelligent management: when the label is almost used up, it will alarm or stop.
7. The standard feeder is driven by imported large torque small inertia motor and Swiss Jinsha rigid roller technology. It has the characteristics of no deformation, excellent friction, large envelop angle without slipping, which ensures the high-precision operation of the standard feeder.
8. Imported components of world famous brands are adopted to ensure the stability and reliability of the whole machine.

技术参数

technical parameter

物料尺寸 Product dimensions	宽度30-340mm;高度10-280mm Width: 30-340mm; Height:10-280mm
贴标速度 Labeling speed	50-250件/分钟（与物料及标签尺寸有关） 50-250pcs/min(depends on the products and labels' sizes)
停标精度 Stop labeling accuracy	±0.3mm
贴标机精度 Labeling machine accuracy	±1mm
使用环境温度 Applicable ambient temperature	5-45℃
使用环境湿度 Applicable ambient humidity	15-90%（无冷凝） (non-condensing)
输送带宽度 Convey belt width	91mm
外形尺寸 Machine dimensions	(L)2180mm*(W)810mm*(H)1600mm



ST-808

实时打印贴标机

ST-808 Real-time printing & labeling machine

适用于为制药行业设计的小圆瓶高速贴标设备，适用于医药各种小圆瓶，稳定速度达到600瓶/分钟。

- 入托储料缓冲仓：采用无缝连接设计，使贴完标进入托仓时更加流畅，在储料缓冲仓具有过载报警系统。
- 伺服入托龙头：流畅式下料流道使瓶子下料时无阻力，自重力下料更为顺畅，全伺服入托轮使入托更为精准。
- 动力压料机构：采用机构的自重力把入托瓶压入托盘卡槽内，让入托更完美。

1. Entrance to the storage buffer bin: the seamless connection design is adopted to make it smoother after labeling. And the storage buffer bin has an overload alarm system.
2. Servo drive feeding faucet: the smooth feeding channel makes the bottle feeding without resistance, and the full servo feeding wheel makes the feeding more accurate.
3. Power pressing mechanism: the self gravity of the mechanism is used to press the feeding bottle into the tray slot to make the feeding perfect.

技术参数

technical parameter

外形尺寸 (Machine dimensions)	(L)4000mm*(W)1600mm*(H)1600mm
物料尺寸 (Bottle size)	1-20ml 7-20ml
贴标速度 (Labeling speed)	600瓶/分
贴标机精度 (Labeling machine accuracy)	±0.5mm



5

ST-500P-4

实时打印贴标机

ST-500P-4 Real-time printing & labeling machine

适用于医药、日化、食品、电子、电气、五金、物流包装等多种行业的物流码、防伪防窜、追踪追溯码实时打印赋码，前关联实施贴标等应用。

- 采用Zebra Ze500热传式打印引擎，打印字体、二维码、条码等信息清晰美观。
- 7*24小时乱序工作打印贴标。
- 与PLC、条码扫描器、机器视觉、称重仪和ERP等上位系统实时通讯与上下游设备通讯，以保证打印贴标信息正确。
- 打印内容灵活可变，即时信息、即时打印、即时贴标。集成到工作站，自动化生产线，包装线以及物流分拣线等。

It is used for real-time printing and code assignment, front Association implementation labeling and other applications in medicine, daily chemicals, food, electronics, electrical, hardware, logistics packaging and other industries. It is suitable for printing logistics code, anti-counterfeiting and anti channeling code, tracking and tracing code.

1. Zebra ze500 heat transfer printing engine is adopted, with clear and beautiful printing font, two-dimensional code, bar code and other information.
2. 7 * 24 hours disorderly work printing and labeling
3. Real time communication with PLC, bar code scanner, machine vision, weighing instrument, ERP and other upper systems, and also communicate with upstream and downstream equipments to ensure the correct printing and labeling information.
4. Printing content is flexible: instant message, instant printing, instant labeling. Integrated into workstation, automatic production line, packaging line and logistics sorting line.

技术参数

technical parameter

产品型号 Item Code	ST-500P-4/6
产品名称 Machine Name	实时打印贴标机 Real-time printing and labeling machine
贴标速度 Labeling speed	10-60件/分钟 (与被贴物、标签尺寸、贴标方式有关) 10-60 pcs/min (related to the pasted object, label size and labeling method)
贴标精度 Labeling Accuracy	±1-2mm (不计产品和标签误差) 1-2mm (excluding product and label errors)
贴标位置 Placement of labeling	侧面、顶面、转角贴 Side, top and corner
通信控制端口 Communication control port	网络、RS232或RS485 network, RS232 or RS485
打印内容 Print content	文字、流水号、日期、图形、一、二维码，其他可变信息 text, serial number, date, graphics, one or two-dimensional code, and other variable information
重量 Machine weight	120Kg
气源 Air supply	0.4-0.6MPa 300L/min
电源及总功率 Power supply and total power	220VAC 50/60Hz 0.65Kw

SENNY

PRINTING PACKING MACHINE



6

ST-801-Q

立式圆瓶定位贴标机

ST-801-Q Vertical positioning and labeling machine for cylindrical bottles

适用于日化、医药、保健品、食品、化工等工业类圆瓶产品圆周上的全绕贴，局部绕贴及定点贴标。选配喷码机，印字机在贴标同时可以打印生产日期、批号、有效期等信息。同一台机器可用于不同直径、不同高度物体的自动贴标。

- ▣采用伺服电机控制的轮盘旋转贴标（或气缸定位式），能实现快速贴标。
- ▣可根据设定实现贴一张标签或两张标签。
- ▣贴标的瓶子三面定位，可实现高精度贴标，不受底部不平影响。
- ▣采用胶轮旋转扶标，贴透明标签无气泡。
- ▣整个电控系统由PLC控制，采用中文触控操作，非常方便、直观。
- ▣全不锈钢圆角机柜，方便清洁卫生、美观。

It is suitable for full winding, partial winding and fixed-point labeling on the circumference of industrial round bottle products such as daily chemical, medicine, health care products, food, chemical industry, etc. Optional configuration with inkjet printer, inkwriter can print production date, batch number, expiration date and other information when labeling. This machine can be used for automatic labeling of objects with different diameters and heights.

1. The disc rotation labeling (or cylinder positioning) controlled by servo motor can realize fast labeling.
2. One or two labels can be pasted according to the setting.
3. The labeling bottle is positioned on three sides, which can achieve high-precision labeling, and won't be affected by the uneven bottom.
4. The rubber wheel is used to rotate the label, and the transparent label is pasted without bubbles.
5. The whole electric system is controlled by PLC, can adopt English touch operation, which is very convenient and intuitive.
6. All stainless steel round corner cabinet, convenient, clean and beautiful.



SENNY

PRINTING PACKING MACHINE

技术参数

technical parameter

适用瓶子 Suitable bottles	直径 Φ 20- Φ 90mm，高度30mm-160mm cylindrical bottles with diameter Φ 20-90mm, height 30mm-160mm
	长径比小于1:3可稳定立置的圆柱形瓶子 The ration between diameter and height should be less than 1:3
	(国标2ml~20ml西林瓶、50~500ml输液瓶均在此范围内) (such as 2ml~20ml penicillin bottle, 50~500ml infusion bottle)
系统稳定速度 Labeling speed	300瓶/分 (与标签尺寸瓶子直径有关) 300pcs/min(depends on the diameter of bottles and labels' s sizes)
贴标精度 Labeling accuracy	瓶轴向位置偏差 \pm 0.5mm；前后高度偏差(首尾错差) \pm 1.0mm The axial position deviation of the bottle is \pm 0.5mm, and the front and rear height deviation is \pm 1.0mm
电源 Power Suppl	50Hz 220V \pm 10%
使用环境相对温度 Relative temperature of working environment	-20~50 $^{\circ}$ C
使用相对湿度 Relative humidity or working environment	15~95%
工作时间 Working hours	维护良好条件下可24小时连续运行 24 hours continuous operation under good maintenance conditions



ST-815

口红贴标机

ST-815 labeling machine for lip sticker

适用于细长物件的端面贴标，稳定速度每分钟可达90件。

- ▣送标器采用进口大力矩小惯性马达驱动，瑞士金沙刚辊技术，永不变形，摩擦力极好，大包角确定不打滑的特点保证了送标功能的高精度运行。
- ▣功能先进、操作简单、结构紧凑；具有无物不贴标，无标自动校正，自动检测功能。
- ▣采用伺服轮盘定位进料，贴标夹具夹正面贴标，二次辊轮压标扶标使贴标更完美。
- ▣采用光电检测、PLC控制，人机界面对话，具有贴标准确、精确度高、速度快等优点。
- ▣采用世界知名品牌进口元件，确保整机的稳定和可靠性。
- ▣提供多项检测功能，防止标签漏贴、错贴、重贴、打码不清或漏打印问题。

It is suitable for the end labeling of slender objects with a stable speed of 90 pcs per minute

1. The standard feeder is driven by imported large torque and small inertia motor and Swiss Jinsha rigid roller technology. It has the characteristics of no deformation, excellent friction, large envelop angle without slipping, which ensures the high-precision operation of the standard feeder.
2. Advanced function, simple operation and compact structure: it has the function of no article no labeling, no label automatic correction and automatic detection.
3. The servo wheel is used to position and feed the material, the labeling clamp is used to label on the front, and the secondary roller is used to press and hold the label to make the labeling perfect.
4. The port adopts photoelectric detection, PLC control and man-machine interface dialogue, which has the advantages of accurate standard, high accuracy and fast speed.
5. Imported components of world famous brands are adopted to ensure the stability and reliability of the whole machine.
6. The port provides a number of detection functions to prevent label missing, wrong sticking, re sticking, unclear coding or missing printing

技术参数

technical parameter

被贴物尺寸 Suitable articles	直径Φ15~30mm 长度 50-110mm diameter Φ15 ~ 30mm, height 50-110mm
贴标速度 Labeling speed	60-90 pieces / min
贴标机精度 Labeling machine accuracy	±1mm
最小贴标长度 Min labeling length	9mm
电源及总功率 Power supply and total power	220VAC±5% 50Hz 2Kw
机器尺寸(参考) Machine dimension (Reference)	(L)2000mm*(W)1072mm*(H)1800mm



盖内贴标机

SENNY
PRINTING PACKING MACHINE



ST-818

预充针管贴标机

ST-818 Labeling machine for prifilled needle

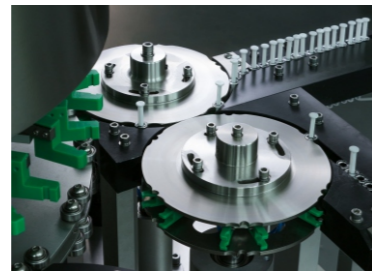
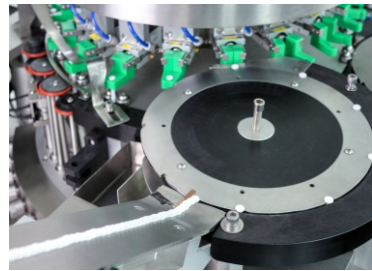
SENNY
PRINTING PACKING MACHINE

名匠智能预充式针管扭杆及贴标系统主要适用于预充式针管灌装及封塞后的扭杆及贴标后续工序。

- ▣采用德国技术，供料不碎料，拧杆扭力控制不断杆；
- ▣设备配备供料机构、HP机、视像检测系统、检测及剔除装置等；
- ▣能够同步完成针管脱巢、推杆送料、拧杆，贴标等功能；
- ▣整机产能可达每分钟300支以上；
- ▣拧杆扭力控制不断杆、不碎管、不损坏胶塞；

Senny intelligent prefilled needle torsion bar and labeling system is mainly applicable to the filling of prefilled needle tube and the subsequent processes of torsion bar and labeling after sealing

1. German technology is used which ensures no broken material is supplied
2. Equipped with feeding mechanism, HP machine, video detection system, detection and elimination device, etc
3. It can simultaneously complete the functions of needle tube off nest, push rod feeding, screw rod, labeling, etc
4. The capacity of the machine can reach more than 300 pcs per minute;
5. Twisting rod torque control continuous rod, no broken and the rubber plug is not damaged



ST-802

回转立式圆瓶贴标机

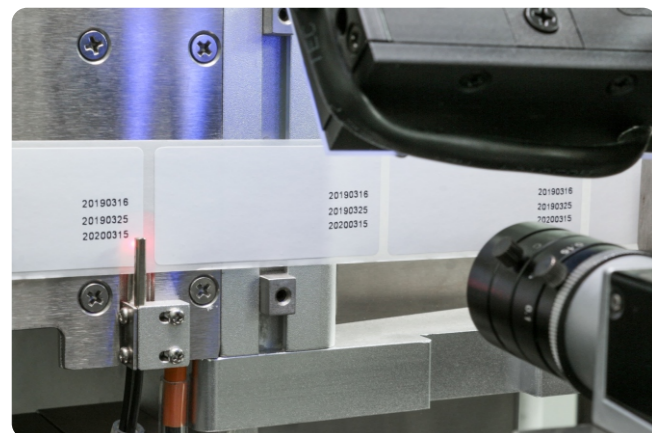
ST-802 Rotary vertical round bottle labeling machine

本机适用于西林瓶、安瓿瓶、口服液以及其他小圆瓶的高速精确贴标，物料立式输送及螺杆分料分别适合站立不稳的小圆物料，回转式辊子轮盘三点定位保证精确及稳定的高速贴标功能；

- ▣星轮式剔除装置，保证高速运转时能够准确检测及有序地剔除错误物料；
- ▣视觉检测装置提供多种检测功能，标签贴标检测、漏码检测以及打印内容检测等，不合格品将被剔除回收；
- ▣可选配热烫印字机，热转印打印机及欧恩马迹同步完成打码及贴标，配套设备的运行状态和报警信息均可在系统中实时反映；
- ▣剔除时不降速；

This machine is suitable for high-speed accurate labeling of penicillin bottle, ampoule bottle, oral liquid and other small round bottles. The vertical conveying of materials and screw distribution are suitable for small round materials which are unstable in standing. The three-point positioning of rotary roller wheel ensures accurate and stable high-speed labeling function.

1. Star wheel type removing device ensures accurate detection and orderly removal of wrong materials during high-speed operation
2. The video detection device provides a variety of detection functions, such as labeling detection, missing code detection and print content detection, etc. Unqualified products will be removed and recycled
3. It can be equipped with hot stamping printer, heat transfer printer and Ouen mark to complete coding and labeling synchronously. The running status and alarm information of the supporting equipment can be reflected in real time in the system
4. The speed won't decrease when the wrong material or unqualified product is removed.



技术参数

technical parameter

外形尺寸 Machine dimensions	(L)2208mm*(W)1420mm*(H)1948mm
物料尺寸 Bottle diameter	Φ10-30mm
贴标速度 Labeling speed	750 pcs/min
贴标机精度 Labeling machine accuracy	±0.5mm



ST-F936

奶粉罐检测放盖机

ST-F936 Milk powder can detection and capping machine

适用于奶粉生产、香精香料、罐类食品以及袋盖罐装产品行业。

- 整机设计很符合GMP要求，设备表面全采用304不锈钢，与产品直接接触部位全采用304不锈钢，易清洁维护，确保符合环境要求，可靠，稳定。
- 可实现罐类产品自动下盖，盖内勺子颜色及位置检测，轮盘式放盖、CCD检测（盖内检测漏勺、混批等），具有不合格盖子剔除，漏放盖报警剔除功能。

It is suitable for the production of milk powder, flavors and fragrances, canned foods and canned bags.

1. The design of the whole machine is in line with GMP requirements. Both the surface of the equipment and the parts in direct contact with the product are made of 304 stainless steel, easy to clean and maintain, which ensures the machine meets the environmental requirements, reliable and stable.
2. It can automatically lower the lid of can products, detect the color and position of the spoon under the lid, disc type to cover lid, and detect with CCD system (detect if missing spoon in the lid, mix batch, etc.), and has the function of rejecting unqualified lid and missing lid alarm.

技术参数

technical parameter

产品型号 Product model	MJ-F936		
产品名称 Product Name	奶粉罐检测放盖机 Milk powder can detection and capping machine		
送标器类型 Label feeder	伺服马达驱动 Servo motor drive		
最高产能 Max capacity	60-80 pieces / min (与产品尺寸相关) related to product size		
检测合格率 Qualified rate	99.97%		
气压 Air pressure	0.6MPa		
重量 Machine weight	650kg		
电源及总功率 Power supply and total power	220VAC	50/60Hz	1.5Kw



ST-841

高速分页平面贴标机

ST-841 High speed paging and labeling machine for plane products

- 适用于针对未成形纸盒、说明书、卡片等片状物料的自动分页、打码、贴标、检测以及剔除
- 独立式反搓式分料机构，使分料均匀、稳定；
- 吸真空贴标输送带，使用产品在输送贴标过程中更稳定、精确；
- 可实时打印流水号、日期、时间、固定数据等。

It is suitable for automatic sorting, coding, labeling, detection and elimination of sheet materials such as unformed cartons, instructions and cards

1. The independent reverse rubbing type material distribution mechanism makes the material distribution uniform and stable
2. Vacuum labeling conveyor belt makes transportation and labeling process more stable and accurate
3. Real time printing serial number, date, time, fixed data, etc

技术参数

technical parameter

外形尺寸 Machine dimension	(L)2150mm*(W)600mm*(H)1300mm
物料尺寸 Material size	(L)60-80mm (W)60-350mm (H)0.3-2mm
贴标速度 Labeling speed	80-120 pcs / minute
贴标机精度 Labeling machine accuracy	±1.0mm



ST811-S

纸盒对角封口贴标机

ST-811-S Carton diagonal sealing and labeling machine

适用于各种方形包装盒的单、双面对角封口贴标。

- ▣ 顶压装置确保贴标时盒身稳定,大大提高贴标精度,对轻小的盒子尤其适用.
- ▣ 可选配透明保护外罩,配有安全锁开关,确保操作人员安全.

Applied for single and double sided diagonal sealing and labeling of various square packing boxe

1. The top pressure device is especially suitable for light and small boxes, which ensures the stability of the box during labeling and greatly improves the labeling accuracy.
2. Optionally congurated with transparent protective cover, equipped with safety lock switch to ensure the safety of operators



SENNY

PRINTING PACKING MACHINE

技术参数

technical parameter

产品型号 Item Code	ST811-S
产品名称 Machine Name	纸盒对角封口贴标机 Carton diagonal sealing labeling
外形尺寸 Machine dimensions	(L)2400mm*(W)900mm*(H)1300mm
物料尺寸 Material size	(W)90-210mm (H)20-100mm
贴标速度 Labeling speed	speed:80-120pcs/min
贴标精度 Labeling Accuracy	±1.0mm

