

ZD-L15 Series

- ◆ Monoblock types with 2 to 4 working sections
- ◆ Flow 63 l/min with pressure 160bar, 200bar, 315bar
- ◆ Spring side control options: T (spring return) and W (detent control)
- ◆ Joining port: L (screw connection)
- ◆ Parallel circuit
- ◆ Spool function: O, P, Y, A
- ◆ Nominal diameter: G1/2; G3/8; M18*1.5; M22*1.5
- ◆ Lever side control options: manual, pneumatic control, electric and pneumatic control, micro-switch control.



DCV45 Series

- ◆ Monoblock types with 1 to 3 working sections
- ◆ Flow 40 l/min with pressure 160bar, 200bar, 250bar
- ◆ Spring side control options: T (spring return) and W (detent control)
- ◆ Joining port: L (screw connection)
- ◆ Parallel circuit
- ◆ Spool function: O, P, Y, A
- ◆ Nominal diameter: G1/2; G3/8; M18*1.5
- ◆ Model examples: ZD-L102E-OT; ZD-L102F-OT AT; ZD-L102F-OW; ZD-L102E-30T; ZD-L102-YT OW-YT etc.
- ◆ Lever side control options: manual.



DCV40 Series

- ◆ Monoblock types with 1 to 8 working sections
- ◆ Nominal pressure 45 l/min, max 50 l/minute with pressure 160bar, 200bar, max pressure up to 315bar
- ◆ Spring side control options: T (spring return) and W (detent control);
- ◆ Joining port: L (screw connection)
- ◆ Parallel circuit
- ◆ Spool function: O, P, Y, A
- ◆ Nominal diameter: G1/2; G3/8; M18*1.5
- ◆ Lever side control options: manual, pneumatic control, electric and pneumatic control, hydraulic and electric control and etc.



P40 SERIES

- ◆ Monoblock types with 1-7 working section
- ◆ Flow 40 l/min with nominal pressure 160bar, max pressure up to 315bar
- ◆ Spring side control options: T (spring return) and W (detent control)
- ◆ Joining port: L (screw connection)
- ◆ parallel or serial action
- ◆ Common or individual back valve for each plunger, with or without safety valve
- ◆ Spool function: O, P, Y, M
- ◆ Nominal diameter: G3/8; G1/2, M18*1.5, 7/8-14UNF, 3/4-16UNF
- ◆ Available manual, pneumatic control, electric and pneumatic control ,hydraulic and electric control.



P80 SERIES

- ◆ Monoblock types with 1-6 working sections
- ◆ Flow 80 l/min with nominal pressure 160bar, max pressure up to 315bar
- ◆ Spring side control options: T (spring return) and W (detent control)
- ◆ Joining port: L (screw connection)
- ◆ Parallel action
- ◆ Common or individual back valve for each plunger, with or without safety valve
- ◆ Spool function: O, P, Y, A
- ◆ Nominal diameter: G3/8; G1/2, 7/8-14UNF, 1 1/16-14UNF
- ◆ Available manual, pneumatic control, electric and pneumatic control , hydraulic and electric control.



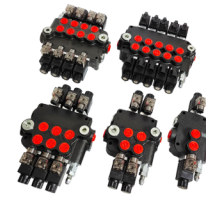
RD5200 Series

- ◆ Monoblock types with 1-3 working section
- ◆ Flow 100-120 l/min with nominal pressure 160bar, max pressure up to 315bar
- ◆ Spring side control options: T (spring return) and W (detent control)
- ◆ Joining port: L (screw connection)
- ◆ parallel or serial action
- ◆ Common or individual back valve for each plunger, with or without safety valve
- ◆ Spool function: O, P, Y, M
- ◆ Nominal diameter: G3/4, G1, SAE12, etc.
- ◆ Available manual.



Z80 Series

- ◆ Monoblock types with 1-6 working section
- ◆ Flow 80 l/min with nominal pressure 160bar, max pressure up to 315bar
- ◆ Coils connector ISO4000: 12VDC, 24VDC
- ◆ Nominal diameter: G3/4, SAE 12
- ◆ Construction: Precise bore honing and spool grinding results in less cross-port leakage and less wasted energy.
- ◆ These precise valves also allow for interchangeable spools for easy on place maintenance.
- ◆ Mounting: The mounting is the same as standard monoblock valves using bolts M8 or complete line of stud kits.



P120 SERIES

- ◆ Monoblock types with 1-4 working sections
- ◆ Flow 120l/min with nominal pressure 160bar, max pressure up to 315bar
- ◆ Spring side control options: T (spring return) and W (detent control)
- ◆ Joining port: L (screw connection)
- ◆ Parallel action
- ◆ Common or individual back valve for each plunger, with or without safety valve
- ◆ Spool function: O, P, Y, A
- ◆ Nominal diameter: G1 , G3/4, 1 1/16-14UNF
- ◆ Available manual, pneumatic control, electric and pneumatic control , hydraulic and electric control.



Z50 Series

- ◆ Monoblock types with 1-7 working section
- ◆ Flow 50 l/min with nominal pressure 160bar, max pressure up to 315bar
- ◆ Coils connector ISO4400:12VDC, 24VDC
- ◆ Nominal diameter: G3/8;G1/2, M18*1.5, 7/8-14UNF, 3/4-16UNF
- ◆ Construction: Precise bore honing and spool grinding results in less cross-port leakage and less wasted energy.
- ◆ These precise valves also allow for interchangeable spools for easy on place maintenance.
- ◆ Mounting: The mounting is the same as standard monoblock valves using bolts M8 or complete line of stud kits.



Sectional Directional Control Valves

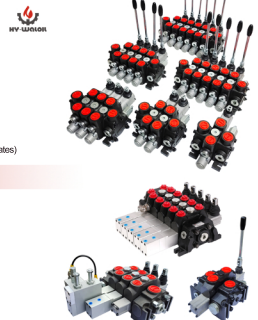
SD8 Series

- Simple, compact and heavy duty designed sectional valve from 1-14 sections for open and closed centre hydraulic systems.
- ◆ Max. Pressure: P: 210 bar, T: 50 bar, A-B: 250 bar
 - ◆ Flow rate: 50l/min, with max. pressure 315bar.
 - ◆ Joining port: L (screw connection)
 - ◆ Spool function options: O, P, Y, A and etc.
 - ◆ Nominal diameter: G1/2; G3/4, 7/8-14UNF ,SAE10, 3/4-16UNF, SAE8, M18X1.5
 - ◆ Spring side control options: spring control and detent control
 - ◆ Lever side control options: manual, pneumatic control, electric and pneumatic control, hydraulic and electric control, hydraulic control and remote control.



PC100 Series

- ◆ Nominal flow rate: 80 liter/min (Max. flow 100 liter/min)
- ◆ Max. Pressure: P: 210 bar, T: 50 bar, A-B: 250 bar
- ◆ Spool type: Standard open center spool (A spool), different spool options
- ◆ Number of spools: From 1 to 8
- ◆ Leakage: 18 cm³/min at 120 bar (From A/B to T)
- ◆ Fluid temperature range: -10 oC ... +80 oC
- ◆ Working fluid: Mineral based hydraulic oil
- ◆ Viscosity: 10-100 cSt (46 cSt mineral based hydraulic oil is recommended, may vary in different climates)



DCV Series(DCV60/100/140/200)

- ◆ Sectional types with 1 to 10 working sections
- ◆ DCV60 series flow: 50l/min, max 60l/min with pressure up to 315bar .
- ◆ DCV100series flow: 80l/min ,max 100l/min with pressure up to 315bar .
- ◆ DCV140 series flow: 100l/min, max 140l/min with pressure up to 315bar .
- ◆ Spool function options: O, P, Y, A and etc.
- ◆ Nominal diameter G3/8;G1/2;G3/4.
- ◆ Lever side control: manual, pneumatic control, solenoid and pneumatic control, hydraulic and solenoid control, hydraulic control and remote control

DCV80 Series

- ◆ Monoblock types with 1 to 5 working sections
- ◆ Nominal pressure 80 l/min, max 100 l/minute with pressure 160bar, max pressure up to 315bar
- ◆ Spring side control options: T (spring return) and W (detent control)
- ◆ Joining port: L (screw connection)
- ◆ Parallel circuit
- ◆ Spool function: O, P, Y, A
- ◆ Nominal diameter: G1/2; G3/4; G1; M22*1.5, M27*2
- ◆ Lever side control options: manual, pneumatic control, electric and pneumatic control and etc.



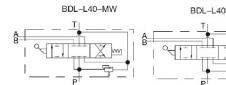
ZDa-L15 Series

- ◆ Monoblock types with 2 to 4 working sections
- ◆ Flow 63 l/min with pressure 160bar, 200bar, 315bar
- ◆ Spring side control options: T (spring return) and W (detent control)
- ◆ Joining port: L (screw connection)
- ◆ Parallel circuit
- ◆ Spool function: O, P, Y, A
- ◆ Nominal diameter: G1/2; G3/8; M18*1.5; M22*1.5
- ◆ Lever side control options: manual, pneumatic control, electric and pneumatic control, micro-switch control.



BDL-L40 Series

- ◆ Single spool monoblock valve
- ◆ Flow 40 l/min with nominal pressure 160bar, max 315bar
- ◆ Spring side control options: T (spring return) and W (detent control)
- ◆ Joining port: L (screw connection)
- ◆ Parallel circuit
- ◆ Spool function: O, P, Y, M
- ◆ Nominal diameter: G3/8; M18*1.5; G1/2
- ◆ Model examples: BDL-L40E-OT; BDL-L40F-MT; BDL-L40F-MW etc.



SD14 Series

- Simple, compact designed, this valve is only one section for open centre and closed centre hydraulic systems.
- ◆ Flow rate: 120l/min, with max pressure 250bar.
 - ◆ Fitted with a main pressure relief valve.
 - ◆ Diameter 20 mm - 0.79 in interchangeable spools
 - ◆ Joining port: L (screw connection)
 - ◆ Spool function options: O, P, Y, A and etc.
 - ◆ Nominal diameter: G3/4, 1 1/16-12UN
 - ◆ Spring side control options: spring control and detent control.
 - ◆ Available manual, pneumatic, electro-hydraulic and remote with flexible cable spool control kits.

