



國家高新技術企業



中國建築鋁型材二十強(前六)



全國鋁型材產業知名品牌示範區
 十大骨干企業/十大骨干品牌



廣東省清潔生產企業



公司簡介

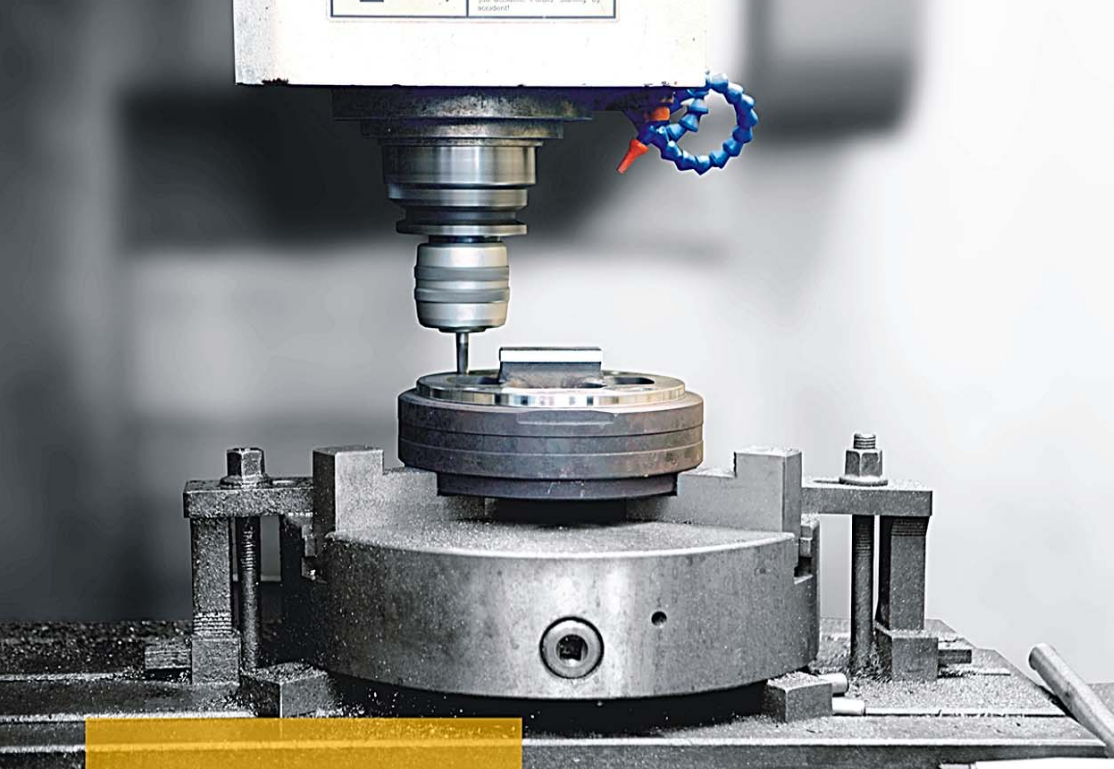
華昌鋁廠有限公司20多年來一直堅持走“科技創新，品質為本，顧客第一”之路，獲得了迅速的發展，現已成為一家專業生產鋁型材和鋁加工的現代化大型企業。擁有廣東華昌鋁廠有限公司和江蘇華昌鋁廠有限公司兩個生產基地及香港偉昌鋁業公司，澳大利亞華昌鋁業公司兩個海外辦事處。作為中國十大鋁型材知名製造商，其商標和產品是在中國眾所周知。公司品牌“偉昌鋁材”覆蓋全國各地的30多個省市，直轄市，并遠銷到50多個國家和地區，如印尼，菲律賓，馬來西亞，南非，西班牙，英國和澳大利亞等亞洲，非洲，美洲和歐洲主要國家。

COMPANY INTRODUCTION

Huachang Aluminum Factory Co., Ltd ,Experienced around 20 years and sticking to the road of "Renovation with technology, quality as the foundation and clients first", the company has obtained a rapid development, turned a large modern enterprise to manufacture aluminium profiles and fabricated aluminium parts in China. We have two manufacturing bases, one in Foshan (Guangdong Huachang Aluminum Factory Co.,Ltd), and One in JiangSu (Jiangsu Huachang Aluminum Factory Co.,Ltd),and our HongKong branch – Weichang Aluminum (HongKong) Company Limited, Australia branch -Huachang Aluminum(Australia) Pty Ltd. As one of the top ten aluminum profile manufacturers in China, both its mark and products are well-known in China. WACANG profiles cover more than 30 provinces and municipalities across the country and are exported to more than 50 countries and regions around Asia, Africa, America and Europe, such as Indonesia, Philippines, Malay sia, South Africa, Spain, UK and Australia, etc.

ALUMINIUM PRODUCTS 鋁型材產品

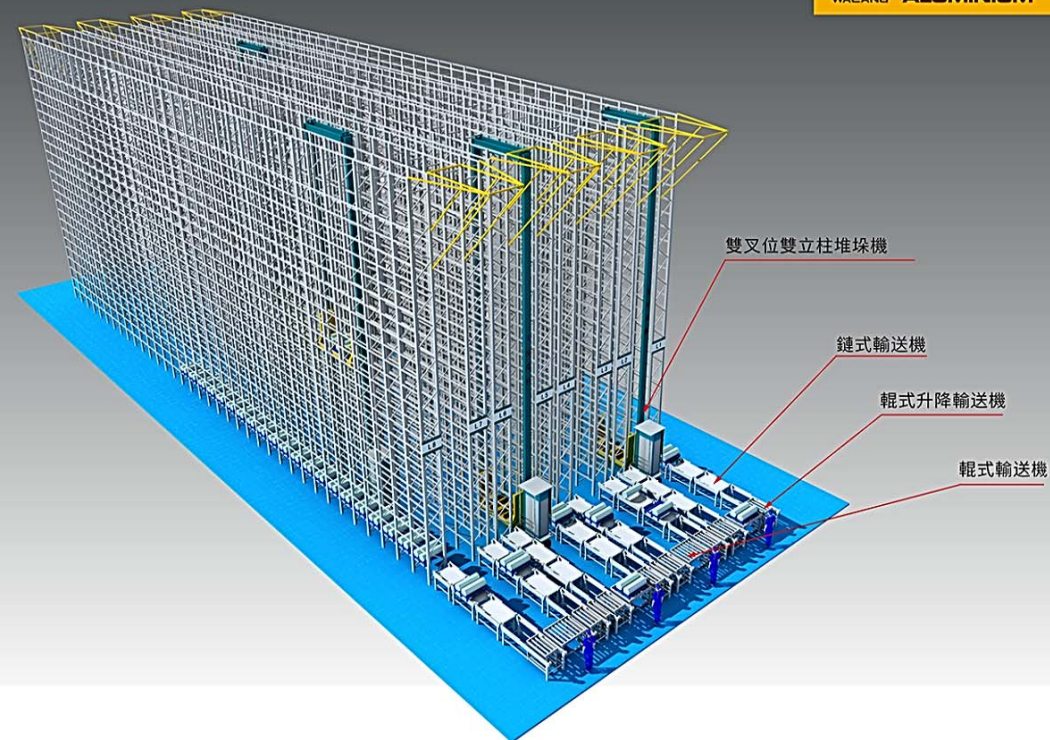




MOULD SHOP 模具製造

模具車間採用國內外優質特殊模具鋼精心設計，引進國外先進的模具加工設備，加工方法精湛。從模具設計、開發到製造均已實現電腦化管理，在設計上採用CAD/CAM 模具開發系統，可滿足客戶的高難度、高精度等多種要求，月生產模具可達3000套以上。

Mould Workshop use high quality steel to design, we import lot of foreign advanced mould processing equipments, exquisite processing methods. Computerized management has been achieved from the mould design, development to manufacturing, CAD/CAM systems are used in the mould development, which can meet the customer's difficult, high precision and many other requirements, monthly capacity can reach more than 3,000 sets.



在模具車間華昌建成了全行業第一座自動立體模具倉庫，利用僅528平方米的占地面積，通過智能化控制系統，可快速存取10多萬套模具，該項目還可對每套模具實行24小時遠程監控，大大提高了倉庫管理的準確性和效率。

In mold workshop, Huachang has built the first automatic stereoscopic warehouse for molds in its industry, through which over 100,000 molds can be quickly accessed through merely 528m2 and intelligent control system. This can also remotely monitor every mold for 24 hours a day, which can help to greatly improve the accuracy and efficiency of warehouse management.





CASTING PROCESS & MATERIAL

熔鑄車間與原料

我們嚴格控制鋁錠的品質，所有原材料都採購自國內外大型鋁錠生產商，主要設備包括蓄熱式燃氣反射熔鑄爐、同水準熱頂式鑄造機、電磁攪拌系統、鋁熔體陶瓷過濾及鑄錠組織細化系統、均勻化退火爐及冷卻室等，可以為客戶提供優良品質的原料棒。引進德國的櫃式爐前化學成分直讀光譜分析儀、電子分析天平相顯微鏡、硬度計、拉伸試驗機等分析檢測設備（儀器），確保材料的加工工藝性能和使用性能。

We strictly control the quality of aluminum ingots, all raw materials are sourced from domestic or international large aluminum providers. We have also installed the latest German testing machinery and technology – Spectro Analytical Instrument (GmbH) to ensure that all of our billet meets or exceeds local and international quality standards. We now have capacity to produce 100% of our billet needs within our own facility which gives us complete quality delivery control of our raw material.



EXTRUSION & SHAPE

擠壓成型

擠壓車間有國際先進的擠壓設備56台，其中廣東生產基地33台，江蘇生產基地23台，其中5000噸1台，2750噸3台，1800噸3台，1650噸5台，1250噸11台，1000噸9台，800噸16台，600噸8台，年生產能力可達25萬噸。

擠壓機性能先進，能滿足鋁型材不同狀態下的力學性能要求，可生產寬度達420mm的各系列型材（包括6063、6005、6061、6082、6060、6463、7005等主要合金及其它特殊合金）。

In the extrusion workshop, there are 56 extrusion presses. In Guangdong bases 33set and Jiangsu bases 23 set; We have one set of 5000 tons, three set of 2750 tons, three set of 1800 tons, five set of 1650 tons, eleven set of 1250 tons, nine set of 1000 tons, Sixteen set of 800 tons, eight set of 600 tons; The annual capacity is around 250,000 tons for aluminum profiles, to meet different mechanics performance requirements in different condition and decreasing surface bug of products by the advanced equipment. We are capable of producing various extrusion shapes with maximum width of 420mm (alloy 6063 / 6005 / 6061 / 6082 / 6060 / 6463 / 7005etc.)



Press Size	No of Machine (set)	Billet Diameter
5000 #	1	335mm
2750 #	3	228mm
1800 #	3	178mm
1650 #	5	150mm
1250 #	11	130mm
1000 #	9	120mm
800 #	16	110mm
600#	8	90mm



SURFACE TREATMENT 表面處理

公司擁有6條陽極氧化生產線，為客戶提供陽極氧化、電泳塗漆及拋光產品，全線進口自日本的立式氧化線及進口自韓國的臥式氧化線可生產長度為7.5米的鋁型材。另，引進臺灣的最先進表面處理工藝可生產高硬度免擦傷多顏色的表面處理。可生產符合GB5237.2及GB5237.3、歐洲Qualanod、英國BS3987和日本JIS H8601及JIS H8602標準和規範要求的高品質陽極氧化電解著色產品。

Huachang Anodizing workshop has six high-tech anodizing lines which are capable of producing anodized extrusions, electro-deposited and polished finishing products. Japan imported of vertical oxidation production line and the Korean Horizontal production line can anodize max 7.5 meters of sections. And the introduction of the most advanced Taiwan surface treatment technology can produce high hardness, scratches anti, many colors of surface treatment. Our production meets GB5237.2 and GB5237.3, Qualanod, BS3987, JIS H8601 and JIS H8602 standards.

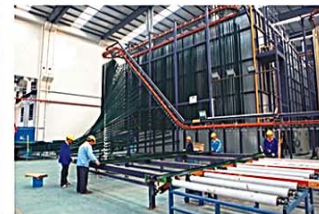


噴塗車間有全進口立式噴塗線3條，臥式噴塗4條，其中臥式線既可以噴粉也可以噴漆。我們選擇符合歐洲環保要求（Rohs標準）的粉料，生產最大長度12米，達到100000噸的年生產能力。

我們還有先進的木紋生產設備可生產顏色多樣的真空和立體木紋滿足不同市場的需求

For the coating facilities, we have total 7 powder coating lines. Three are in Vertical and others in Horizontal, one of the horizontal lines is powder coating and wet painting (fluorocarbon) exchangeable. We comply with European environmental requirements (Rohs standard) coatings and provide the high quality and colorful surface to customer. The max length reach 12 meters and annual capacity is around 100,000tons.

We also have advanced wood grain production equipments that can produce various color vacuum and solid grain to meet different the demand of the market.





VASAIT INDUSTRY SYSTEM 华赛特门窗系统



為了更好地服務於中高端門窗幕牆市場，華昌斥鉅資從德國、義大利等國引進了全套最新技術的高精尖鋁門窗幕牆加工設備（包括：義大利MECAL7.4米四軸加工中心，德國PRESSTA埠角切割鋸，義大利MECAL高精度任意角度雙頭切割鋸，德國PRESSTA重型組角機，德國HAFFNER專業45度高精度手頭鋸，義大利ALTECH彎弧機）等，可以為全世界的顧客朋友們提供全套的門窗，幕牆系統解決方案。具備年加工門窗10萬平方米、幕牆5萬平方米的生產能力。

In order to better serve the mid- and high-end door and window and curtain wall market, Huachang has invested heavily to introduce complete sets of sophisticated aluminum doors and windows and curtain walls processing equipment from Germany, Italy and other countries (subtitle display: MECAL 7.4m four-axis machining center from Italy, PRESSTA port slitting saw from Germany, MECAL high-precision angle-free double-edged incising saw from Italy, PRESSTA heavy-duty crimping machine from Germany, HAFFNER professional 45° high-precision saw from Germany, and ALTECH arc curving machine from Italy) With which we can offer the full set of solutions in doors, windows and curtain wall system to the clients from all over the world. Vasit is capable in manufacture in fabricating 100,000 m2, and curtain wall 50,000 m2.



AUTOMATIC WAREHOUSE AND PRODUCT PACKAGING 自動包裝、倉儲管理

行業第一條自動化，智慧化倉儲系統落戶華昌，倉庫採用最先進的電腦系統管理，它能智慧化地合理安排生產調度與計畫，從而大大提高了進出倉效率。

該物流系統的成功投入不僅使出貨速度大幅提高，在行業內更起到了一個示範作用，是現代化企業的楷模。

The industry's first automatic and intelligent warehousing system has settled in Huachang Aluminum. Adopting the most advanced computer system management, which is able to intelligently and rationally arrange production scheduling and planning, greatly improving the warehousing efficiency.

Substantially accelerating warehousing and playing an exemplary role in the industry, our logistic system is a model for modern enterprises.





TESTING CENTER 檢測中心

華昌堅持品質就是企業的生命，非常注重對品質的控制和檢測，積累了豐富的研究、開發、生產經驗，從1996年起，就建立起了職能明確的研發中心。研發中心下轄新產品開發中心、門窗深加工中心、資訊中心、工藝組等四個部門，由一批專業素質高、業務過硬的科研人員專職承擔相關的研發工作。同時，通過與華南理工大學、中南大學等國內高水準科研單位建立常態化的產學研合作關係，進一步提高企業的研發能力和研發中心的執行力。

Huachang insists on quality is the life of enterprise, We paying great attention to the quality control and inspection and accumulated abundant experiences of research, development and production, Set up the research and development centre with clear functions since 1996. The research and development centre has four departments such as new product development centre, deep-processing center of door and window information centre and process group etc to undertakes in full-time the relevant research and development works by a group of scientific research personnel who are high in professional quality and have a perfect mastery of operation. At the same time, via establishing the normality production, teaching and research cooperative relationship with domestic high-level R&D institutions such as South China University of Technology and Central South University etc., enhance further the research and development ability of the enterprise and the executive force of the research and development centre.

檢測儀器 TESTING INSTRUMENTS



耐濕熱試驗室 Humidity/heat resistance lab



耐候試驗室 Weathering Testing Lab



型材斷面測量儀 CAT Detector



力學性能試驗室 Mechanical Properties Lab

檢驗證書 INSPECTION CERTIFICATE



ISO 9001:2008



ISO 14001:2004



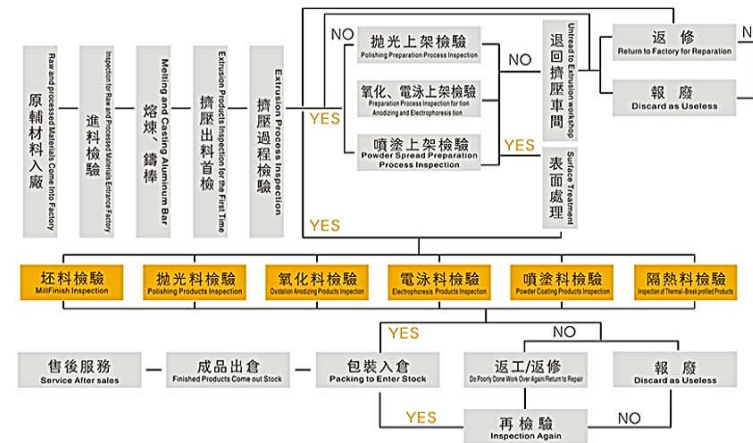
OHSAS 18001:2007



Product Quality Certification



品質管制流程 QUALITY MANAGEMENT PROCESS



MAXIMUM DIMENSION RANGE 我司擠壓機最大尺寸圖	品類 Item	最大尺寸範圍 Maximum dimension
	扁款型材 Flat bar or stripe	420 x 20 mm
	矩形管或空心型材 Rectangular tube or hollow section	400 x 120mm
	圓管 Round tube	Φ 380 mm
	方管或槽材 Square tube or channel	270mm x 270mm