



Leakage Current Sensor DXE-L24

$I_P = 5\text{mA} \dots 3\text{A}$

In the DC system, the DC leakage current sensor is an indispensable and important component. It detects the DC leakage current of the equipment and is widely used in DC transmission, power storage detection, DC screens, power supplies, large medical and health equipment, photovoltaics, Wind power generation, communication base stations and other industrial equipment. The DC leakage current sensor is a measurement module that uses the principle of fluxgate to convert the measured DC current into a DC current or voltage signal that is output in proportion to the current.



Features

- Integrated design
- Excellent accuracy
- Very good linearity
- Wide frequency bandwidth

Application Domain

- Transmission and storage monitoring
- Communication base station
- Power supply equipment
- Photovoltaic wind power
- Medical and health equipment
- Others

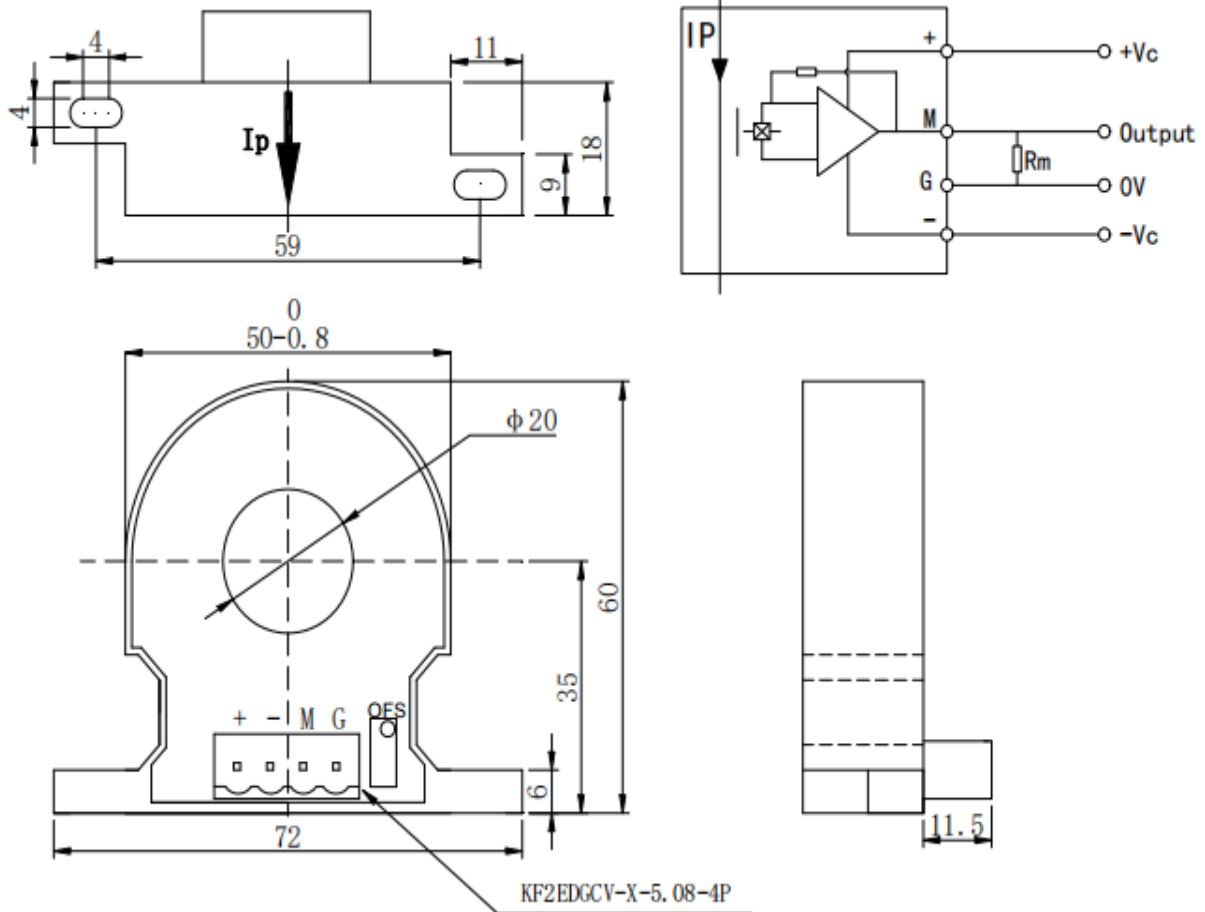


Electrical data (Ta=25°C±5°C)

Type	DXE-L24-	DXE-L24-	DXE-L24-	DXE-L24-	DXE-L24-	DXE-L24-
	5mA	10mA	30mA	50mA	1A	3A
Rated input I _{PN}	±5mA	±10mA	±30mA	±50mA	±1A	±3A
Measure rang I _{PM}	±6mA	±12mA	±36mA	±60mA	±1.2A	±3.6A
Rated output voltage V _{OUT}	5V					
Supply voltage V _C	±12V					
Load resistance R _M	≥10kΩ					
Corresponding time T _r	≤100ms					
Offset voltage V _O	±50mV					
Output voltage @25°C V _{PN}	4.96~5.04V					
Current consumption I _C	≤15mA					
Linearity ε _L	1%					
Accuracy X	1%					
Galvanic isolation V _D	50Hz,1min,3kV					
Operating temperature T _A	-20~+70°C					
Storage temperature T _S	-20~+70°C					
Mass m	≈65g					



Mechanical dimension (mm)



Mechanical characteristics

- General tolerance: ± 0.8 mm
- Other tolerance execution: GB/T 1804-2000-M
- Fixing hole size: $\phi 4.0$ mm
- Fastening steel screw: M4
- Recommended fastening torque: 0.75 Nm (± 10 %)
- Connection of secondary: KF2EDGV-X-5.08-4P
- Connector recommended torque: 0.3Nm (± 10 %)