

VBCD-SE A 单向平衡阀

SINGLE OVERCENTER VALVE



技术参数/TECHNICAL DATA:

应用材料/MATERIAL EMPLOYED

阀体/BODY: 钢/Steel

阀芯/VALVES: 强化硬质钢/Hardened Steel

密封/SEALS: 丁腈胶/NBR

适用工作环境/OPERATIONAL RANGE

安装/MOUNTING

按需/as preferred

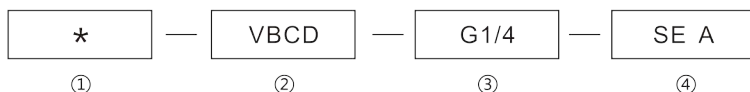
温度/TEMPERATURES

理想工作温度: +40°C~+70°C/Ideal operating range between +40°C and +70°C

最高工作温度: +90°C/Max operating temperature +90°C

最低/最高环境温度: -20°C~+60°C/Min/Max environment temps -20°C and +60°C

型号说明/MODEL CODE:



① 材料/Material: A: 铝/aluminium 空白: 碳钢/Carbon steel

② 液控单平衡阀系列代号/single overcenter valve series code: VBCD-SE A型/VBCD-SE A type

③ 连接螺纹尺寸/connection thread dimension: BBSP

④ 单向平衡阀/ The Single overcenter valves

型号 /TYPE	最大流量 (L/min)	最大压力 (bar)		先导比 (pilot ratio)	V1-V2 C1-C2
		钢 /steel	铝 /aluminium		
VBCD-G1/4-SE A	20	350	210	4.5:1	G1/4
VBCD-G3/8-SE A	40				G3/8
VBCD-G1/2-SE A	60				G1/2

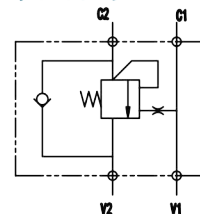
型号 /TYPE	L	L1	L2	L3	L4	L5	L6	N	H	S
VBCD-G1/4-SE A	110	150	90	90	20	50	55	Φ8.5	60	30
VBCD-G3/8-SE A	110	150	91	91	20	50	55	Φ8.5	60	30
VBCD-G1/2-SE A	110	150	91	91	20	50	57.5	Φ8.5	65	35

应用/APPLICATIONS:

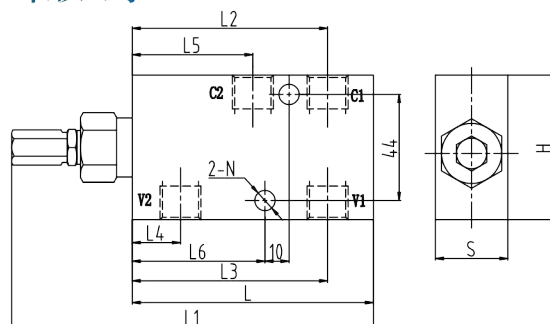
平衡阀是用来控制执行机构在一个方向(单平衡)或两个方向(双平衡)的停止和运动。

The overcenter valves are employed to control the block and the motion of an actuators in one direction(single overcenter valves) or in both the directions(dual overcenter valves)

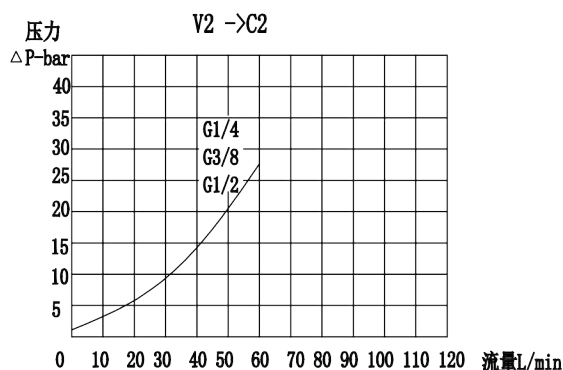
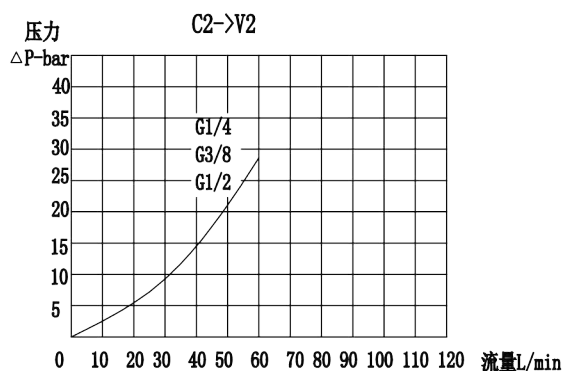
图形符号/SYMBOL:



外形尺寸/OVER DIMENSION:



流量曲线图/FLOW DIAGRAM

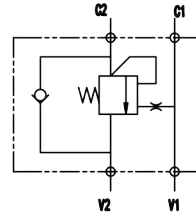


VBCD-SE 单向平衡阀

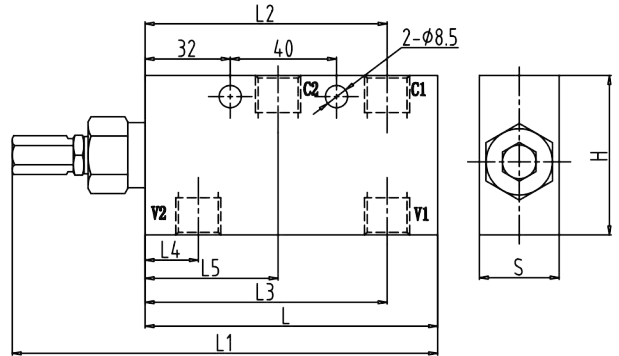
SINGLE OVERCENTER VALVE



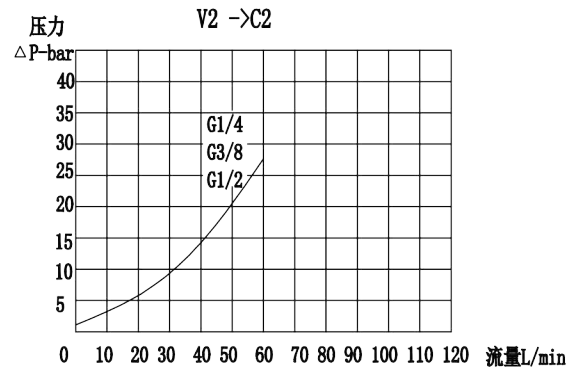
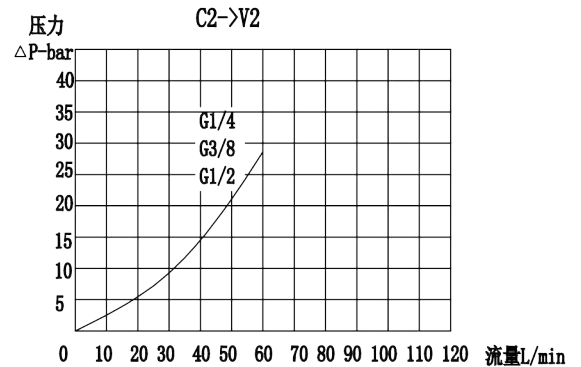
图形符号/SYMBOL:



外形尺寸/OVER DIMENSION:



流量曲线图/FLOW DIAGRAM

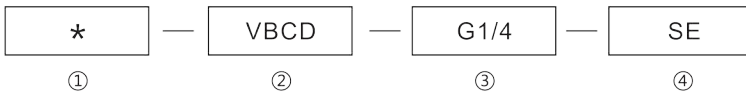


技术参数/TECHNICAL DATA:

应用材料/MATERIAL EMPLOYED 适用工作环境/OPERATIONAL RANGE
 阀体/BODY: 钢/Steel 安装/MOUNTING
 阀芯/VALVES: 强化硬质钢/Hardened Steel 按需/as preferred
 密封/SEALS: 丁腈胶/NBR

温度/TEMPERATURES
 理想工作温度: +40°C~+70°C/Ideal operating range between +40°C and +70°C
 最高工作温度: +90°C/Max operating temperature +90°C
 最低/最高环境温度: -20°C~+60°C/Min/Max environment temps -20°C and +60°C

型号说明/MODEL CODE:



- ① 材料/Material: A: 铝/aluminium 空白: 碳钢/Carbon steel
- ② 液控单平衡阀系列代号/single overcenter valve series code: VBCD-SE型/VBCD-SE type
- ③ 连接螺纹尺寸/connection thread dimension: BBSP
- ④ 单向平衡阀/ The Single overcenter valves

型号 /TYPE	最大流量 (L/min)	最大压力 (bar)		先导比 (pilot ratio)	V1-V2 C1-C2
		钢 /steel	铝 /aluminium		
VBCD-G1/4-SE	20	350	210	4.5:1	G1/4
VBCD-G3/8-SE	40				G3/8
VBCD-G1/2-SE	60				G1/2

型号 /TYPE	L	L1	L2	L3	L4	L5	L6	N	H	S
VBCD-G1/4-SE	110	150	90	90	20	50	55	Ø8.5	60	30
VBCD-G3/8-SE	110	150	91	91	20	50	55	Ø8.5	60	30
VBCD-G1/2-SE	110	150	91	91	20	50	57.5	Ø8.5	65	35

应用/APPLICATIONS:

平衡阀是用来控制执行机构在一个方向(单平衡)或两个方向(双平衡)的停止和运动。

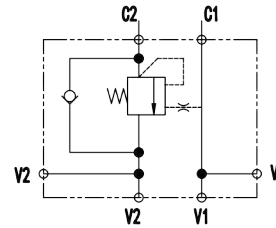
The overcenter valves are employed to control the block and the motion of an actuators in one direction(single overcenter valves)or in both the directions(dual overcenter valves)

VBCD-SE-FL 单向平衡阀

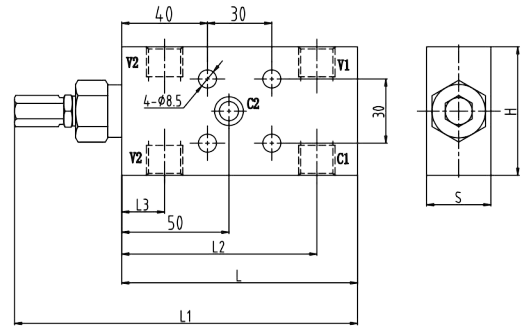
SINGLE OVERCENTER VALVE



图形符号/SYMBOL:



外形尺寸/OVER DIMENSION:



技术参数/TECHNICAL DATA:

应用材料/MATERIAL EMPLOYED

阀体/BODY: 钢/Steel

阀芯/VALVES: 强化硬质钢/Hardened Steel

密封/SEALS: 丁腈胶/NBR

适用工作环境/OPERATIONAL RANGE

安装/MOUNTING

按需/as preferred

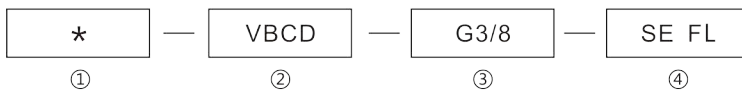
温度/TEMPERATURES

理想工作温度: +40°C~+70°C/Ideal operating range between +40°C and +70°C

最高工作温度: +90°C/Max operating temperature +90°C

最低/最高环境温度: -20°C~+60°C/ Min/Max environment temps -20°C and +60°C

型号说明/MODEL CODE:



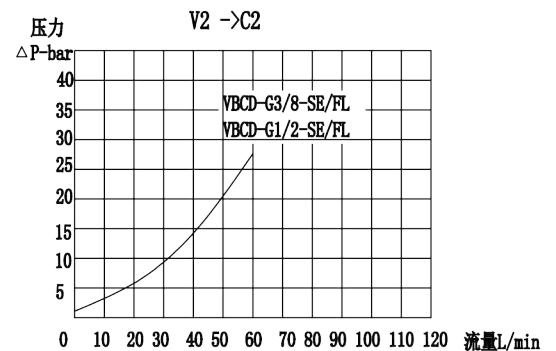
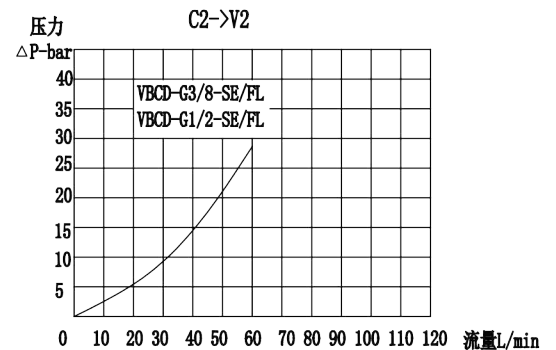
①材料/Material: A: 铝/aluminium 空白: 碳钢/Carbon steel

②液控单向平衡阀系列代号/single overcenter valve series code: VBCD-SE FL型/VBCD-SE FL type

③连接螺纹尺寸/connection thread dimension: BBSP

④单向平衡阀板式连接(法兰连接)/The Single overcenter valves flangeable

流量曲线图/FLOW DIAGRAM



型号 /TYPE	最大流量 (L/min)	最大压力 (bar)		先导比 (pilot ratio)	B	
		钢 /steel	铝 /aluminium		V1-V2 C1	C2
VBCD-G3/8-SE FL	40	350	210	4.5:1	G3/8	Φ9
VBCD-G1/2-SE FL	60				G1/2	Φ9

型号 /TYPE	L	L1	L2	L3	H	S
VBCD-G3/8-SE FL	110	150	91	20	60	30
VBCD-G1/2-SE FL	110	150	91	20	65	35

应用/APPLICATIONS:

平衡阀是用来控制执行机构在一个方向(单平衡)或两个方向(双平衡)的停止和运动。

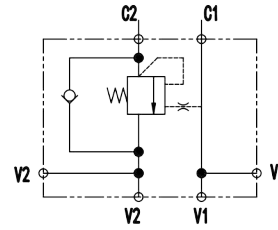
The overcenter valves are employed to control the block and the motion of an actuators in one direction(single overcenter valves)or in both the directions(dual overcenter valves)

VBCD-SE-FL3单向平衡阀

SINGLE OVERCENTER VALVE



图形符号/SYMBOL:



技术参数/TECHNICAL DATA:

应用材料/MATERIAL EMPLOYED

阀体/BODY: 钢/Steel

阀芯/VALVES: 强化硬质钢/Hardened Steel

密封/SEALS: 丁腈胶/NBR

适用工作环境/OPERATIONAL RANGE

安装/MOUNTING

按需/as preferred

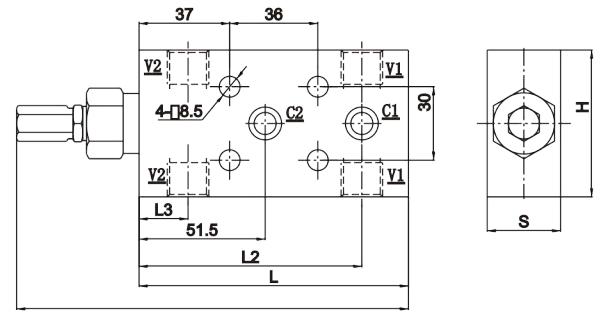
温度/TEMPERATURES

理想工作温度: +40°C~+70°C/Ideal operating range between +40°C and +70°C

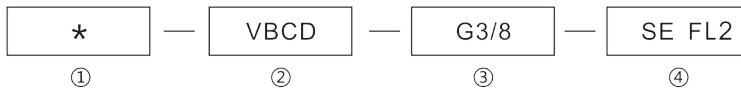
最高工作温度: +90°C/Max operating temperature +90°C

最低/最高环境温度: -20°C~+60°C/Min/Max environment temps -20°C and +60°C

外形尺寸/OVER DIMENSION:



型号说明/MODEL CODE:



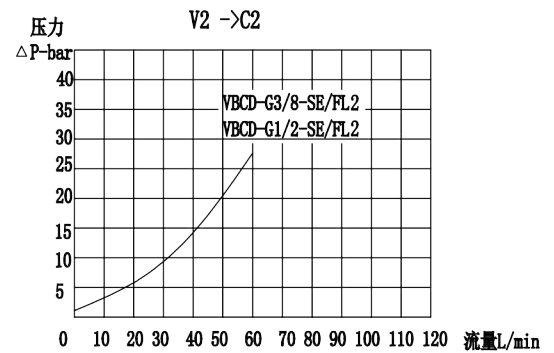
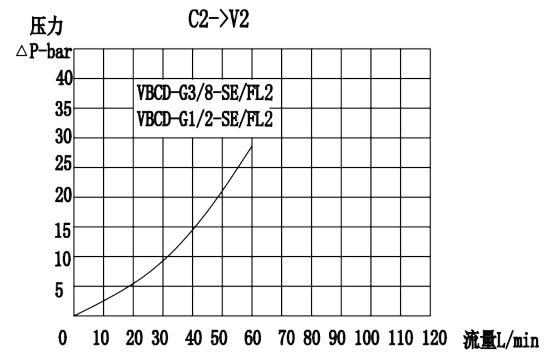
①材料/Material: A: 铝/aluminium 空白: 碳钢/Carbon steel

②液控单平衡阀系列代号/single overcenter valve series code: VBCD-SE FL2型/VBCD-SE FL2type

③连接螺纹尺寸/connection thread dimension: BBSP

④单向平衡阀板式连接(法兰连接)/The Single overcenter valves flangeable

流量曲线图/FLOW DIAGRAM



型号 /TYPE	最大流量 (L/min)	最大压力 (bar)		先导比 (pilot ratio)	V1-V2 C1	C2
		钢 /steel	铝 /aluminium			
VBCD-G3/8-SE FL2	40	350	210	4.5:1	G3/8	φ9
VBCD-G1/2-SE FL2	60				G1/2	φ9

型号 /TYPE	L	L1	L2	L3	H	S
VBCD-G3/8-SE FL2	110	150	91	20	60	30
VBCD-G1/2-SE FL2	110	150	91	20	65	35

应用/APPLICATIONS:

平衡阀是用来控制执行机构在一个方向(单平衡)或两个方向(双平衡)的停止和运动。

The overcenter valves are employed to control the block and the motion of an actuators in one direction(single overcenter valves)or in both the directions(dual overcenter valves)

VBCD-SE-FLV 单向平衡阀

SINGLE OVERCENTER VALVE



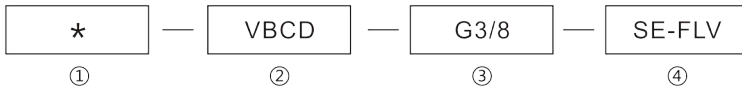
技术参数/TECHNICAL DATA:

应用材料/MATERIAL EMPLOYED
 阀体/BODY: 钢/Steel
 阀芯/VALVES: 强化硬质钢/Hardened Steel
 密封/SEALS: 丁腈胶/NBR

适用工作环境/OPERATIONAL RANGE
 安装/MOUNTING: 按需/as preferred

温度/TEMPERATURES
 理想工作温度: +40°C~+70°C/Ideal operating range between +40°C and +70°C
 最高工作温度: +90°C/Max operating temperature +90°C
 最低/最高环境温度: -20°C~+60°C/Min/Max environment temps -20°C and +60°C

型号说明/MODEL CODE:



- ① 材料/Material: A: 铝/aluminium 空白: 碳钢/Carbon steel
- ② 液控单平衡阀系列代号/single overcenter valve series code: VBCD-SE-FLV型/VBCD-SE-FLV type
- ③ 连接螺纹尺寸/connection thread dimension: BBSP
- ④ 单向平衡阀法兰螺钉连接/ The Single overcenter valves flangeable by screw

型号 /TYPE	最大流量 (L/min)	最大压力 (bar)		先导比 (pilot ratio)	V1-V2 C1	C2
		钢 /steel	铝 /aluminium			
VBCD-G3/8-SE-FLV	40	350	210	4.5:1	G3/8	Φ9
VBCD-G1/2-SE-FLV	60				G1/2	Φ9

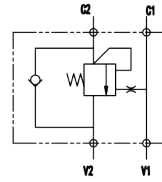
型号 /TYPE	L	L1	L2	L3	L4	L6	H	H1	S
VBCD-G3/8-SE-FLV	110	159	67	20	52	13.5	65	32.5	35
VBCD-G1/2-SE-FLV	110	159	67	20	52	15	65	35	35

应用/APPLICATIONS:

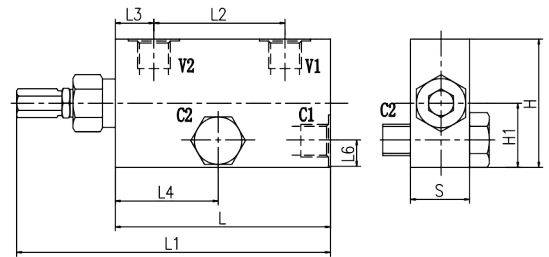
平衡阀是用来控制执行机构在一个方向(单平衡)或两个方向(双平衡)的停止和运动。

The overcenter valves are employed to control the block and the motion of an actuators in one direction(single overcenter valves)or in both the directions(dual overcenter valves)

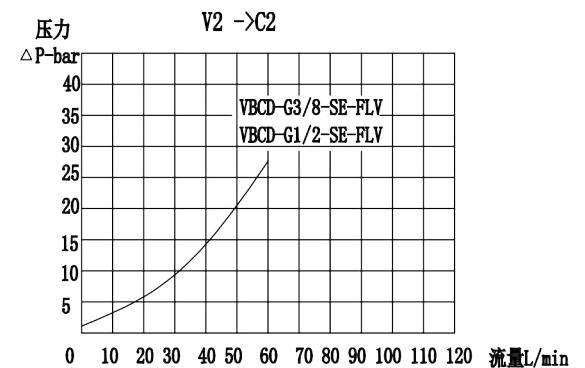
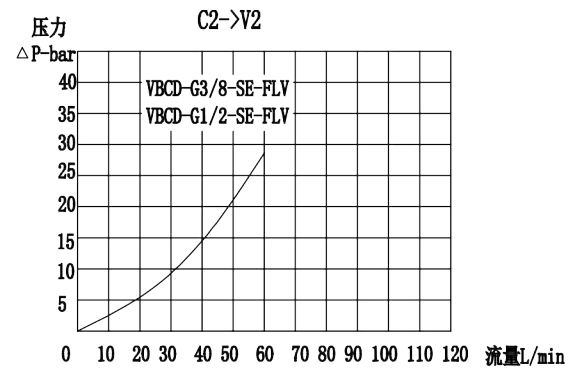
图形符号/SYMBOL:



外形尺寸/OVER DIMENSION:



流量曲线图/FLOW DIAGRAM

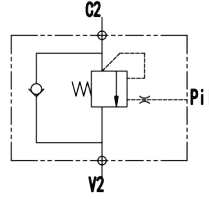


VBCD-SE-3VIE 单向平衡阀

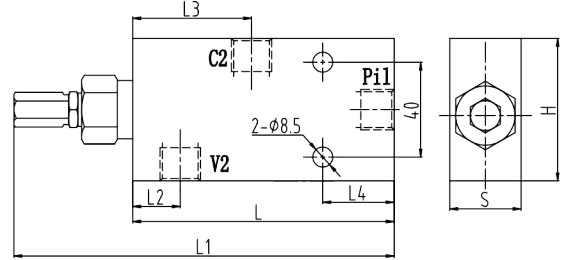
SINGLE OVERCENTER VALVE



图形符号/SYMBOL:



外形尺寸/OVER DIMENSION:



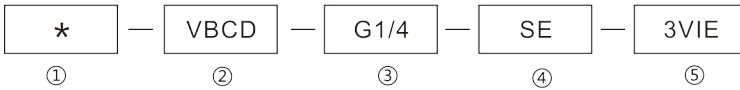
技术参数/TECHNICAL DATA:

应用材料/MATERIAL EMPLOYED
 阀体/BODY: 钢/Steel
 阀芯/VALVES: 强化硬质钢/Hardened Steel
 密封/SEALS: 丁腈胶/NBR

适用工作环境/OPERATIONAL RANGE
 安装/MOUNTING
 按需/as preferred

温度/TEMPERATURES
 理想工作温度: +40°C~+70°C/Ideal operating range between +40°C and +70°C
 最高工作温度: +90°C/Max operating temperature +90°C
 最低/最高环境温度: -20°C~+60°C/Min/Max environment temps -20°C and +60°C

型号说明/MODEL CODE:

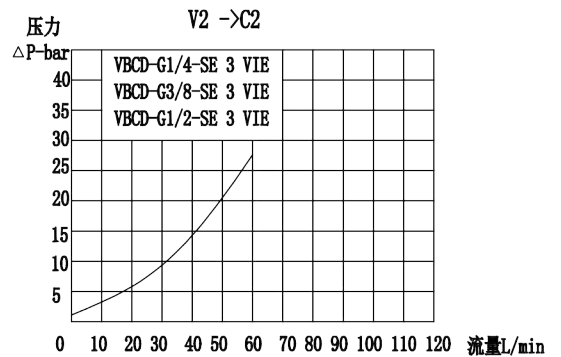
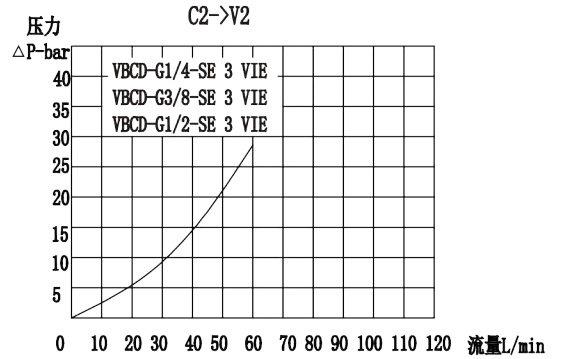


- ①材料/Material: A: 铝/aluminium 空白: 碳钢/Carbon steel
- ②液控单平衡阀系列代号/single overcenter valve series code: VBCD-SE-3VIE型/
VBCD-SE-3VIE type
- ③连接螺纹尺寸/connection thread dimension: BBSP
- ④单向平衡阀/ The Single overcenter valves
- ⑤3油口/ 3 Ways

型号 /TYPE	最大流量 (L/min)	最大压力 (bar)		先导比 (pilot ratio)	V2 C2	Pi1
		钢 /steel	铝 /aluminium			
VBCD-G1/4-SE-3VIE	20	350	210	4.5:1	G1/4	G1/4
VBCD-G3/8-SE-3VIE	40				G3/8	G1/4
VBCD-G1/2-SE-3VIE	60				G1/2	G1/4

型号 /TYPE	L	L1	L2	L3	L4	H	S
VBCD-G1/4-SE-3VIE	110	150	20	50	25	60	30
VBCD-G3/8-SE-3VIE	110	150	20	50	25	60	30
VBCD-G1/2-SE-3VIE	110	150	20	50	25	65	35

流量曲线图/FLOW DIAGRAM



应用/APPLICATIONS:

平衡阀是用来控制执行机构在一个方向(单平衡)或两个方向(双平衡)的停止和运动。

The overcenter valves are employed to control the block and the motion of an actuators in one direction(single overcenter valves)or in both the directions(dual overcenter valves)