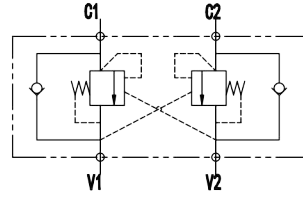


VBCD-DE A 双向平衡阀

DOUBLE OVERCENTER VALVE



图形符号/SYMBOL:



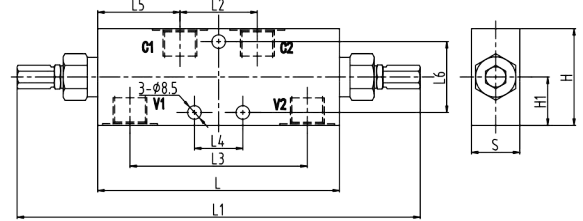
技术参数/TECHNICAL DATA:

应用材料/MATERIAL EMPLOYED
 阀体/BODY: 钢/Steel
 阀芯/VALVES: 强化硬质钢/Hardened Steel
 密封/SEALS: 丁腈胶/NBR

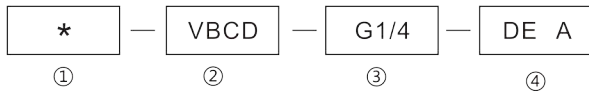
适用工作环境/OPERATIONAL RANGE
 安装/MOUNTING
 按需/as preferred

温度/TEMPERATURES
 理想工作温度: +40°C~+70°C/Ideal operating range between +40°C and +70°C
 最高工作温度: +90°C/Max operating temperature +90°C
 最低/最高环境温度: -20°C~+60°C/Min/Max environment temps -20°C and +60°C

外形尺寸/OVER DIMENSION:

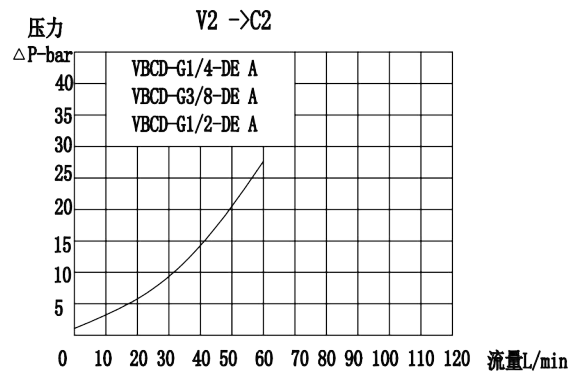
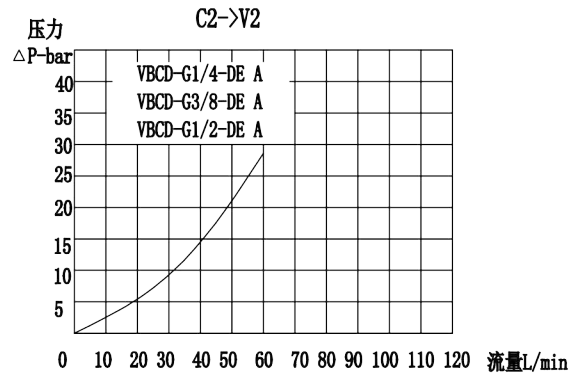


型号说明/MODEL CODE:



- ① 材料/Material: A: 铝/aluminum 空白: 碳钢/Carbon steel
- ② 液控平衡阀系列代号/ Overcenter valve series code: VBCD-DE A型/VBCD-DE A type
- ③ 连接螺纹尺寸/connection thread dimension: BBSP
- ④ 双向平衡阀/Double overcentre valves

流量曲线图/FLOW DIAGRAM



型号 /TYPE	最大流量 (L/min)	最大压力 (bar)		先导比 (pilot ratio)	V1-V2 C1-C2
		钢 /steel	铝 /aluminium		
VBCD-G1/4-DE A	20	350	210	4.5:1	G1/4
VBCD-G3/8-DE A	40				G3/8
VBCD-G1/2-DE A	60				G1/2

型号 /TYPE	L	L1	L2	L3	L4	L5	L6	H1	H	S
VBCD-G1/4-DE A	150	250	50	110	30	50	44	30	60	30
VBCD-G3/8-DE A	150	250	50	110	30	50	44	30	60	30
VBCD-G1/2-DE A	150	250	50	110	30	50	44	30	65	35

应用/APPLICATIONS:

平衡阀是用来控制执行机构在一个方向(单平衡)或两个方向(双平衡)的停止和运动。

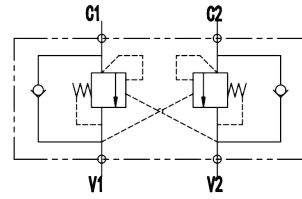
The overcenter valves are employed to control the block and the motion of an actuators in one direction(single overcenter valves)or in both the directions(dual overcenter valves)

VBCD DE 双向平衡阀

DOUBLE OVERCENTER VALVE



图形符号/SYMBOL:

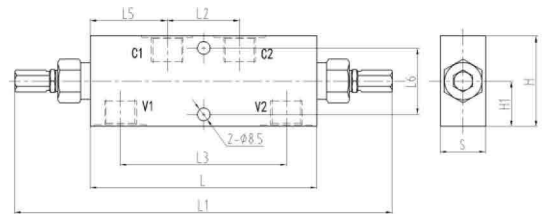


技术参数/TECHNICAL DATA:

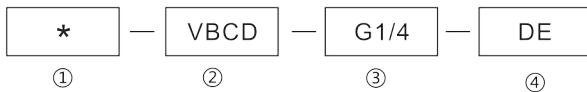
应用材料/MATERIAL EMPLOYED: 阀体/BODY: 钢/Steel; 适用工作环境/OPERATIONAL RANGE: 安装/MOUNTING: 按需/as preferred
 阀芯/VALVES: 强化硬质钢/Hardened Steel
 密封/SEALS: 丁腈胶/NBR

温度/TEMPERATURES: 理想工作温度: +40°C~+70°C/Ideal operating range between +40°C and +70°C; 最高工作温度: +90°C/Max operating temperature +90°C; 最低/最高环境温度: -20°C~+60°C/Min/Max environment temps -20°C and +60°C

外形尺寸/OVER DIMENSION:

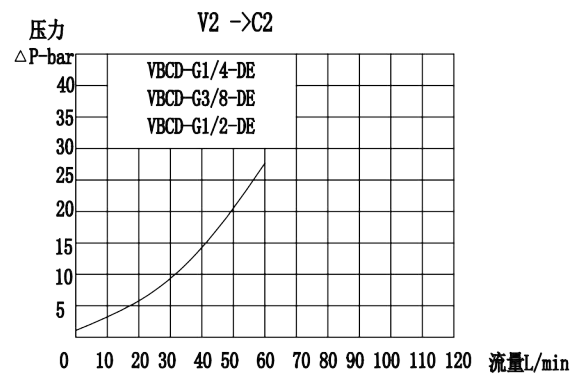
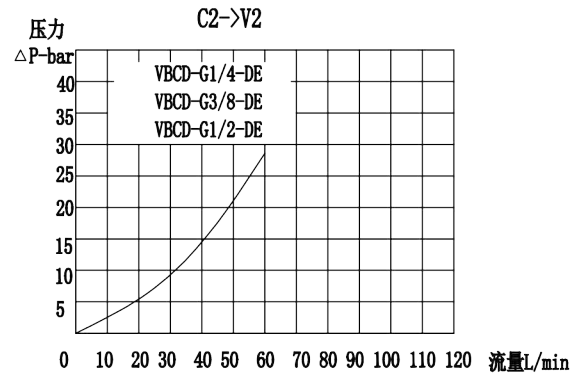


型号说明/MODEL CODE:



- ① 材料/Material: A: 铝/aluminum 空白: 碳钢/Carbon steel
- ② 液控平衡阀系列代号/Overcenter valve series code: VBCD-DE 型/VBCD-DE type
- ③ 连接螺纹尺寸/connection thread dimension: BBSF
- ④ 双向平衡阀/Double overcentre valves

流量曲线图/FLOW DIAGRAM



型号 /TYPE	最大流量 (L/min)	最大压力 (bar)		先导比 (pilot ratio)	V1-V2 C1-C2
		钢 /steel	铝 /aluminium		
VBCD-G1/4-DE	20	350	210	4.5:1	G1/4
VBCD-G3/8-DE	40				G3/8
VBCD-G1/2-DE	60				G1/2

型号 /TYPE	L	L1	L2	L3	L4	L5	L6	H1	H	S
VBCD-G1/4-DE	150	250	50	110	30	50	44	30	60	30
VBCD-G3/8-DE	150	250	50	110	30	50	44	30	60	30
VBCD-G1/2-DE	150	250	50	110	30	50	44	30	65	35

应用/APPLICATIONS:

平衡阀是用来控制执行机构在一个方向(单平衡)或两个方向(双平衡)的停止和运动。

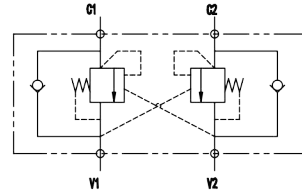
The overcenter valves are employed to control the block and the motion of an actuators in one direction(single overcenter valves)or in both the directions(dual overcenter valves)

VBCD-DE-FL 双向平衡阀

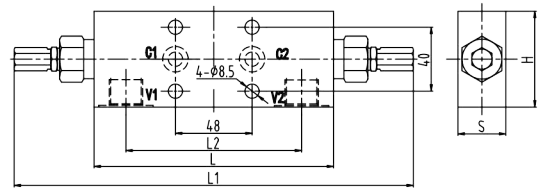
DOUBLE OVERCENTER VALVE



图形符号/SYMBOL:



外形尺寸/OVER DIMENSION:



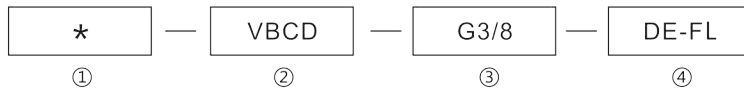
技术参数/TECHNICAL DATA:

应用材料/MATERIAL EMPLOYED
 阀体/BODY: 钢/Steel
 阀芯/VALVES: 强化硬质钢/Hardened Steel
 密封/SEALS: 丁腈胶/NBR

适用工作环境/OPERATIONAL RANGE
 安装/MOUNTING
 按需/as preferred

温度/TEMPERATURES
 理想工作温度: +40°C~+70°C/Ideal operating range between +40°C and +70°C
 最高工作温度: +90°C/Max operating temperature +90°C
 最低/最高环境温度: -20°C~+60°C/Min/Max environment temps -20°C and +60°C

型号说明/MODEL CODE:

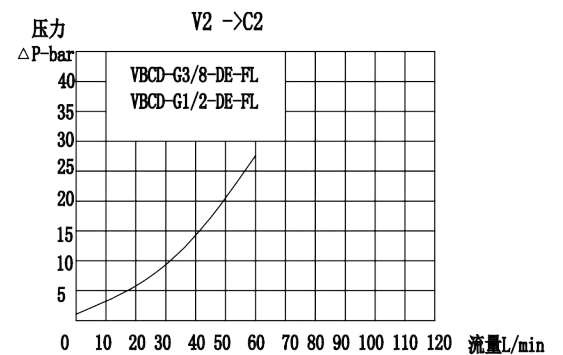
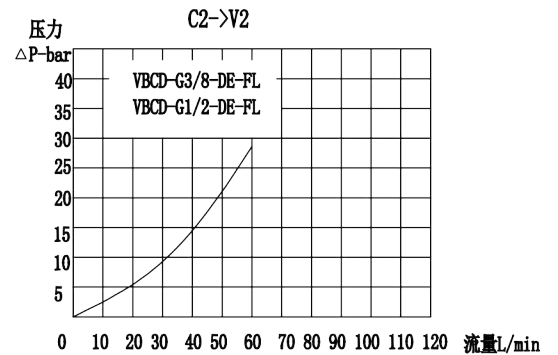


- ① 材料/Material: A: 铝/aluminum 空白: 碳钢/Carbon steel
- ② 液控双向平衡阀系列代号/double overcenter valve series code: VBCD-DE-FL型/VBCD-DE-FL type
- ③ 连接螺纹尺寸/connection thread dimension: BBSP
- ④ 双向平衡阀法兰连接(板式连接)/double and flangeable: DE-FL

型号 /TYPE	最大流量 (L/min)	最大压力 (bar)		先导比 (pilot ratio)	V1-V2	C1-C2
		钢 /steel	铝 /aluminium			
VBCD-G3/8-DE-FL	40	350	210	4.5:1	G3/8	Φ9
VBCD-G1/2-DE-FL	60				G1/2	Φ9

型号 /TYPE	L	L1	L2	H	S	O-ring
VBCD-G3/8-DE-FL	150	250	110	60	30	10.78x2.62
VBCD-G1/2-DE-FL	150	250	110	65	35	10.78x2.62

流量曲线图/FLOW DIAGRAM



应用/APPLICATIONS:

平衡阀是用来控制执行机构在一个方向(单平衡)或两个方向(双平衡)的停止和运动。

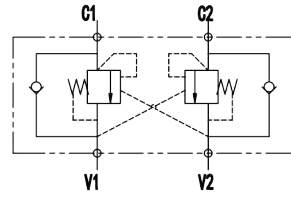
The overcenter valves are employed to control the block and the motion of an actuators in one direction(single overcenter valves)or in both the directions(dual overcenter valves)

VBCD-DE-FLV 双向平衡阀

DOUBLE OVERCENTER VALVE



图形符号/SYMBOL:



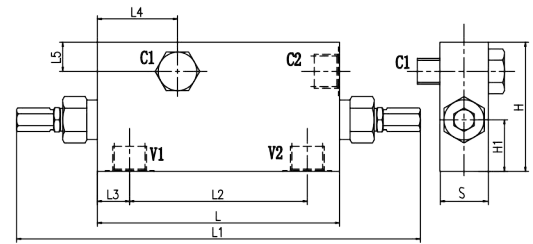
技术参数/TECHNICAL DATA:

应用材料/MATERIAL EMPLOYED
 阀体/BODY: 钢/Steel
 阀芯/VALVES: 强化硬质钢/Hardened Steel
 密封/SEALS: 丁腈胶/NBR

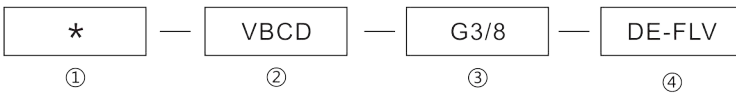
适用工作环境/OPERATIONAL RANGE
 安装/MOUNTING
 按需/as preferred

温度/TEMPERATURES
 理想工作温度: +40°C~+70°C/Ideal operating range between +40°C and +70°C
 最高工作温度: +90°C/Max operating temperature +90°C
 最低/最高环境温度: -20°C~+60°C/ Min/Max environment temps -20°C and +60°C

外形尺寸/OVER DIMENSION:



型号说明/MODEL CODE:

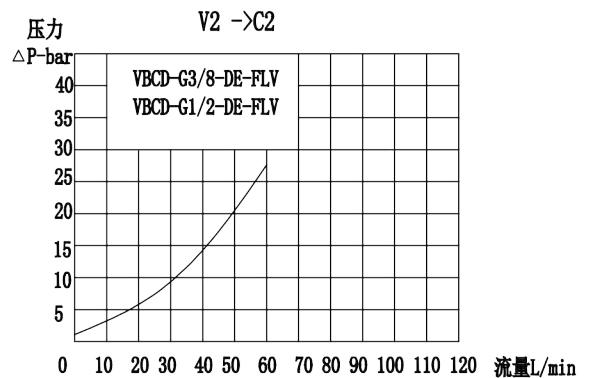
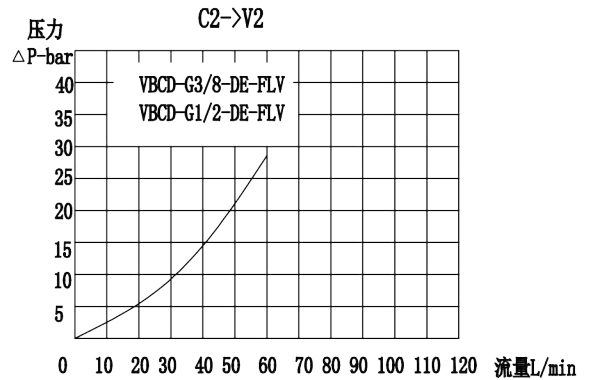


- ① 材料/Material: A: 铝/aluminum 空白: 碳钢/Carbon steel
- ② 液控平衡阀系列代号/ Overcenter valve series code: VBCD-DE-FLV型/VBCD-DE-FLV type
- ③ 连接螺纹尺寸/connection thread dimension: BBSP
- ④ 双向平衡阀、法兰螺钉连接/double overcenter valve flangeable by screw: DE-FLV

型号 /TYPE	最大流量 (L/min)	最大压力 (bar)		先导比 (plot ratio)	V1-V2 C1-C2
		钢 /steel	铝 /aluminium		
VBCD-G3/8-DE-FLV	40	350	210	4.5:1	G3/8
VBCD-G1/2-DE-FLV	60				G1/2

型号/TYPE	L	L1	L2	L3	L4	L5	H1	H	S
VBCD-G3/8-DE-FLV	150	250	110	20	50	12.5	30	70	30
VBCD-G1/2-DE-FLV	150	250	110	20	50	18	32	80	30

流量曲线图/FLOW DIAGRAM



应用/APPLICATIONS:

平衡阀是用来控制执行机构在一个方向(单平衡)或两个方向(双平衡)的停止和运动。

The overcenter valves are employed to control the block and the motion of an actuators in one direction(single overcenter valves)or in both the directions(dual overcenter valves)