



VariPool Honor

Residential Full Inverter Pool Heat Pump



FOSHAN UWOTEC NEW ENERGY CO., LTD.

Address: 6# Bihu Road, Hecun, Lishui Town, Nanhai, Foshan,
Guangdong Province, CHINA.

Phone: +86 757 8566 0666 ext. 8513

Email: info@uwo-heatpump.com

Website: www.uwo-heatpump.com



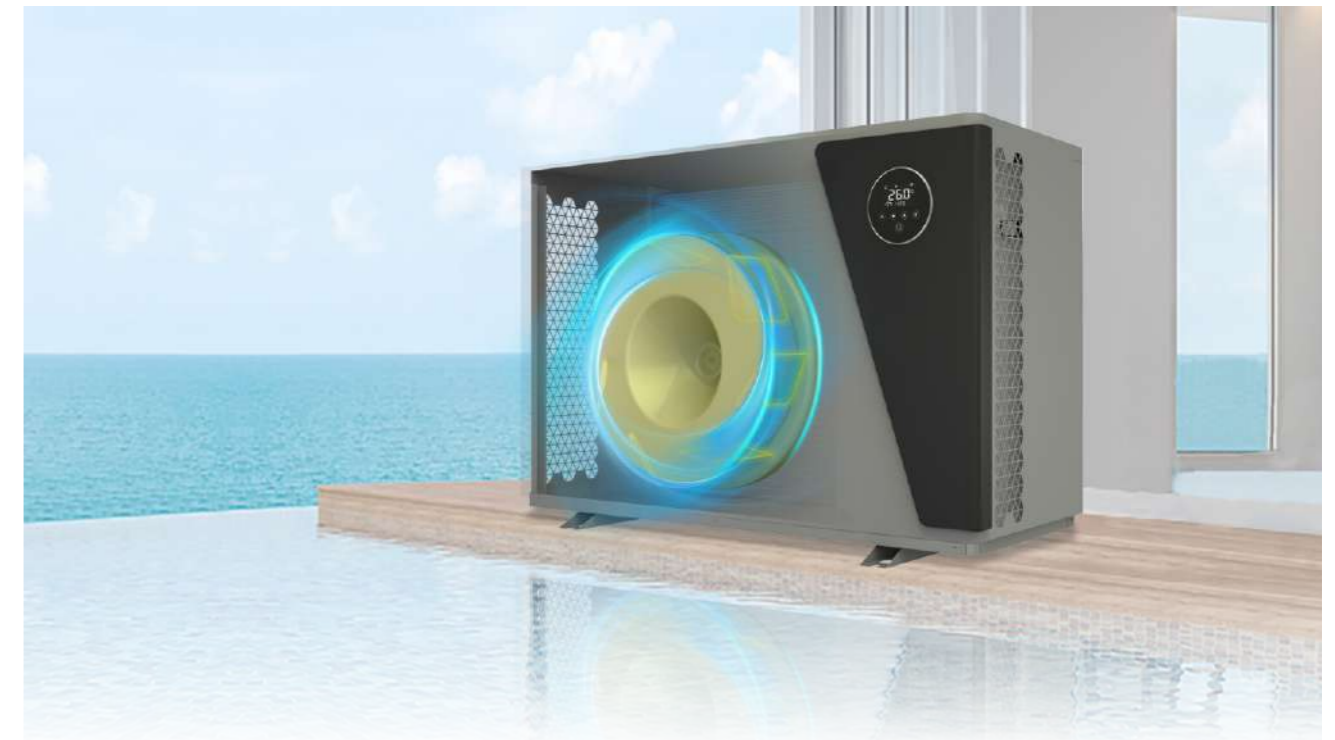
Patented Airflow Structure

The silent operation of VariPool Honor benefits from the innovative airflow design and scientific internal configuration. The air is absorbed to the back and released from both sides, which avoids blowing cold wind to people in the front, offering premium user experience.



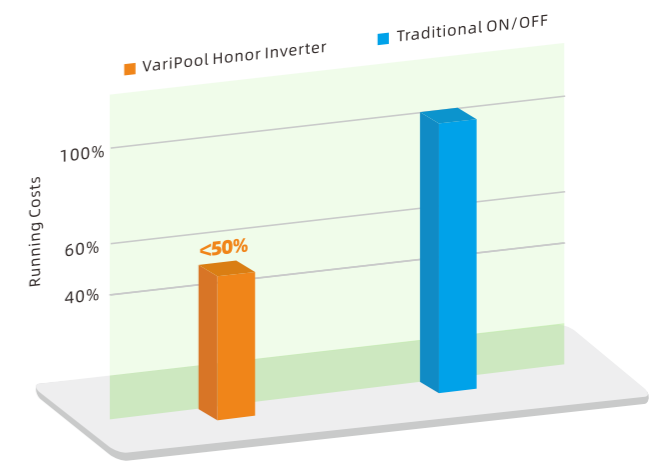
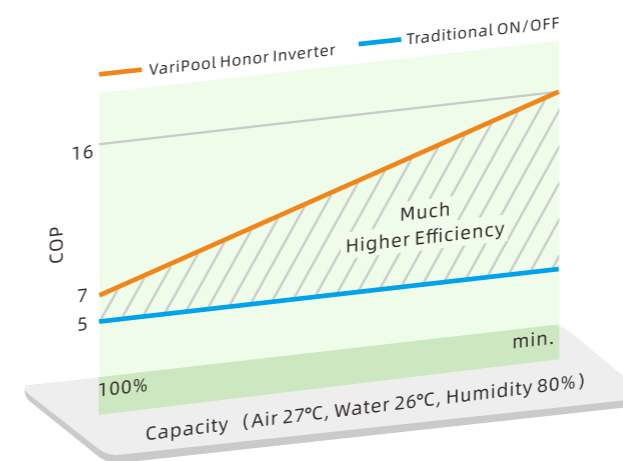
Centrifugal Fan Solution

The special design of the centrifugal fan blades is adopted for the VariPool Honor. It plays a vital role in the overall performance of the unit on whisper-quiet running, high COP and reliability.



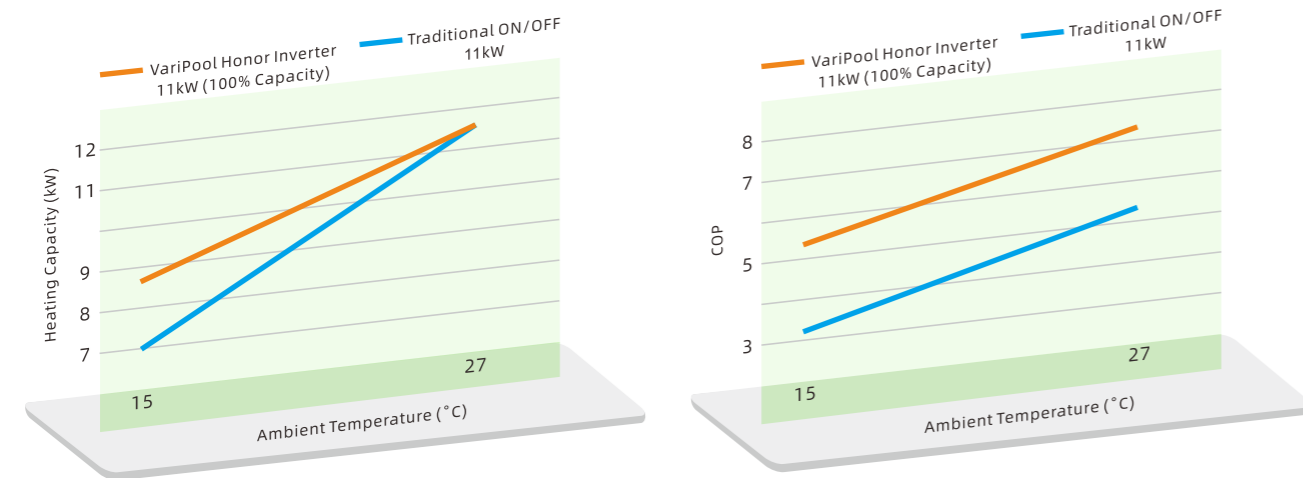
Top Energy Efficiency

Compared to traditional ON/OFF pool heat pumps, the VariPool Honor always remains much higher efficiency and performs more excellently with highest COP up to 16 and it saves more than 50% of the running costs thanks to the advanced full inverter technology.



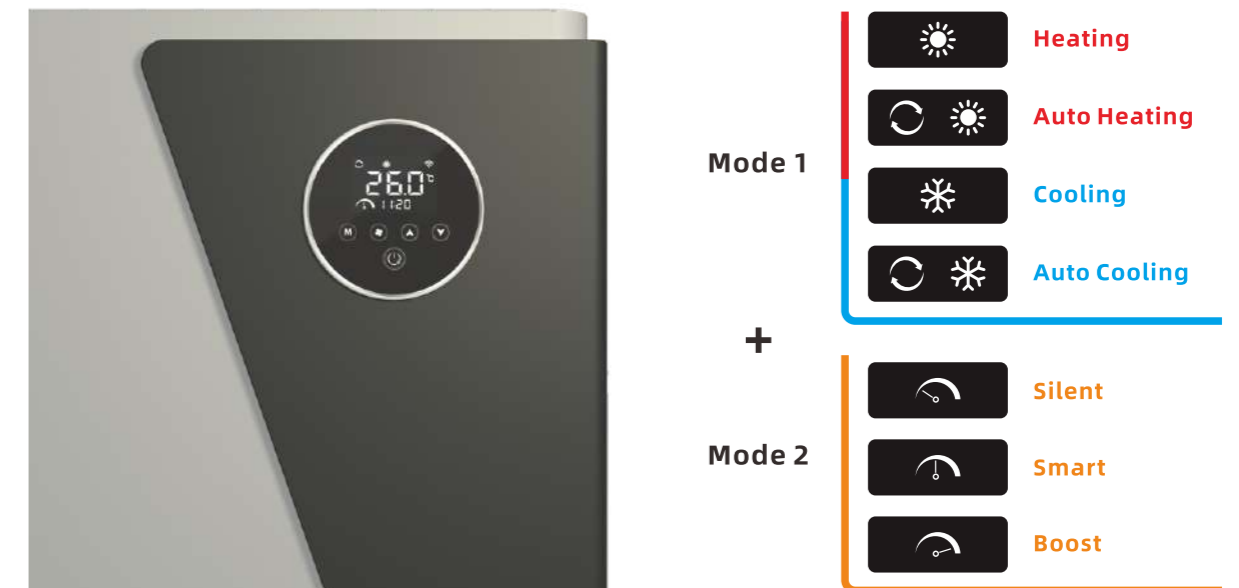
Maintain Excellent Performance

Even in low temperature environment, VariPool Honor still makes a great performance no matter for heating capacity or COP, which ensures the stable and high-efficient operation to extend your swimming seasons.



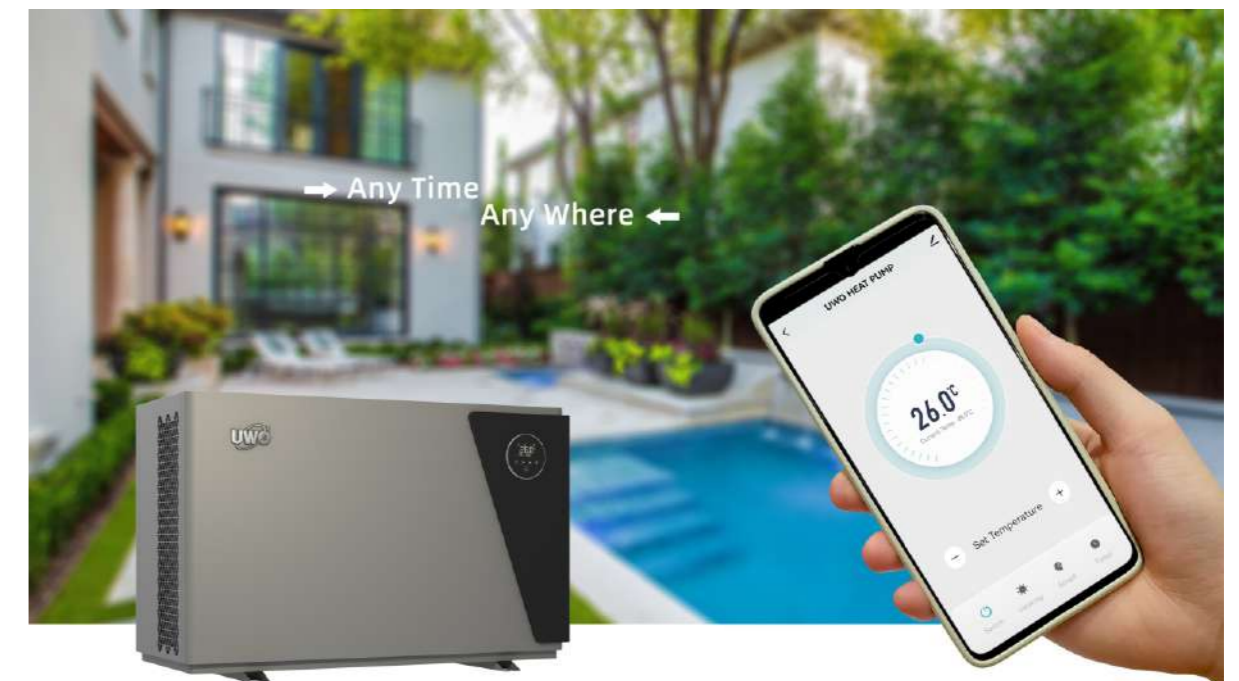
12 Operating Modes

A good product should always cater to users' demands. The logical design and simple operation interface of the controller enable users easily choose the most suitable modes according to their needs.



Smart APP Control

Equipped with built-in Wi-Fi, VariPool Honor can be easily taken full control by smart phone regardless of time and location, realizing Any Time, Any Where for real.



Parameters (9~18kW)

Factory Model No.	USP	90R3V-B1	110R3V-B1	130R3V-B1	150R3V-B1	180R3V-B1
Power Supply	/	220-240V~/50Hz				
Advised Pool Volume	m ³	20~45	30~55	35~65	40~70	40~80
Performance Condition: Air Temp.: 27°C, Inlet / Outlet Water Temp.: 26°C / 28°C, Humidity 80%						
Heating Capacity	kW	1.98~9.54	2.97~11.66	3.42~13.05	3.68~15.56	4.54~18.34
Power Consumption	kW	0.12~1.33	0.18~1.61	0.21~1.84	0.22~2.12	0.28~2.57
COP	W/W	16.50~7.17	16.50~7.24	16.28~7.09	16.72~7.33	16.21~7.13
Performance Condition: Air Temp.: 15°C, Inlet Water Temp.: 26°C, Humidity 70%						
Heating Capacity	kW	1.72~7.46	2.52~8.66	2.62~9.72	2.78~11.62	3.64~13.42
Power Consumption	kW	0.20~1.40	0.30~1.59	0.32~1.89	0.33~2.13	0.44~2.48
COP	W/W	8.60~5.33	8.40~5.44	8.18~5.14	8.42~5.45	8.27~5.41
Operating Air Temp.	°C	-15~43				
Refrigerant	/	R32 / R410A				
Compressor	/	Mitsubishi				
Fan Motor Type	/	DC				
Water Connection	mm	50				
Noise Level (1m)	dB(A)	35~45	36~45.5	37~46	38~47	38.5~47.5
Advised Water Flow	m ³ /h	4.1	5.0	5.7	6.6	7.8
Water Pressure Drop	kPa	13	15	16	18	20

*The above data are subject to modify based on continuous improvement without advance notice. Please refer to those on real unit, and thanks for your attention to the latest version.



Parameters (21~28kW)

Factory Model No.	USP	210R3V-B1	250R3V-B1	280R3V-B1	210R3TV-B1	250R3TV-B1	280R3TV-B1
Power Supply	/	220-240V~/50Hz			380-415V/3N~/50Hz		
Advised Pool Volume	m ³	50~95	55~110	65~120	50~95	55~110	65~120
Performance Condition: Air Temp.: 27°C, Inlet / Outlet Water Temp.: 26°C / 28°C, Humidity 80%							
Heating Capacity	kW	4.78~21.40	5.36~25.44	5.62~28.52	4.78~21.42	5.38~25.46	5.78~28.54
Power Consumption	kW	0.29~3.00	0.33~3.55	0.34~3.95	0.29~3.00	0.33~3.55	0.35~3.95
COP	W/W	16.48~7.13	16.24~7.16	16.52~7.22	16.48~7.14	16.30~7.17	16.51~7.22
Performance Condition: Air Temp.: 15°C, Inlet Water Temp.: 26°C, Humidity 70%							
Heating Capacity	kW	3.64~14.61	3.81~17.62	4.44~18.82	3.65~14.64	3.82~17.64	4.46~18.84
Power Consumption	kW	0.42~2.68	0.46~3.28	0.51~3.34	0.42~2.78	0.46~3.28	0.51~3.34
COP	W/W	8.66~5.44	8.28~5.37	8.70~5.63	8.69~5.26	8.30~5.37	8.74~5.64
Operating Air Temp.	°C	-15~43					
Refrigerant	/	R32 / R410A					
Compressor	/	Mitsubishi					
Fan Motor Type	/	DC					
Water Connection	mm	50					
Noise Level (1m)	dB(A)	40~50	40.5~50	41~50.5	40~50	40.5~50	41~50.5
Advised Water Flow	m ³ /h	9.2	10.9	12.2	9.1	10.9	12.2
Water Pressure Drop	kPa	35	35	38	35	35	38

*The above data are subject to modify based on continuous improvement without advance notice. Please refer to those on real unit, and thanks for your attention to the latest version.



Parameters (32~40kW)

Factory Model No.	USP	320R3V-B1	320R3TV-B1	350R3TV-B1	400R3TV-B1
Power Supply	/	220-240V~/50Hz	380-415V/3N~/50Hz		
Advised Pool Volume	m ³	70~130	70~130	80~150	90~170
Performance Condition: Air Temp.: 27°C, Inlet / Outlet Water Temp.: 26°C / 28°C, Humidity 80%					
Heating Capacity	kW	6.95~31.80	6.96~31.83	7.72~35.10	8.81~40.07
Power Consumption	kW	0.43~4.51	0.43~4.50	0.48~4.95	0.54~5.69
COP	W/W	16.16~7.05	16.19~7.07	16.08~7.09	16.31~7.04
Performance Condition: Air Temp.: 15°C, Inlet Water Temp.: 26°C, Humidity 70%					
Heating Capacity	kW	4.83~22.04	4.81~22.12	5.17~23.61	6.05~28.80
Power Consumption	kW	0.60~4.19	0.60~4.25	0.63~4.63	0.74~5.69
COP	W/W	8.05~5.26	8.02~5.20	8.21~5.10	8.18~5.06
Operating Air Temp.	°C	-15~43			
Refrigerant	/	R32 / R410A			
Compressor	/	Mitsubishi			
Fan Motor Type	/	DC			
Water Connection	mm	50			
Noise Level (1m)	dB(A)	41.5~51	41.5~51	42~51.5	42.5~52
Advised Water Flow	m ³ /h	13.7	13.7	15.0	17.2
Water Pressure Drop	kPa	40	40	42	43

*The above data are subject to modify based on continuous improvement without advance notice. Please refer to those on real unit, and thanks for your attention to the latest version.

