



JingAn Casing Rotator

景安·全回转钻机

JingAn Heavy Industry

徐州景安重工机械制造有限公司

Xuzhou JingAn Heavy Industry Manufacture Co.,Ltd.

徐州经济技术开发区206国道东侧, 大庙村西口

+86516-87896588 13905210686

13905210686@163.com

FAX +86516-87896588

www.xzjazg.com

请联系景安重工销售公司与当地经销商 Please contact the business company and the local agents:



本产品随技术进步将不断改进, 如有修改, 恕不另行通知。样本图片与实物不符的, 以实物为准。
Under our policy of continuous product development and improvement, we reserve the right to change specifications and design without prior notice.



徐州景安重工机械制造有限公司
Xuzhou JingAn Heavy Industry Manufacture Co.,Ltd.





Company Profile 企业简介

徐州景安重工机械制造有限公司,位于徐州市经济技术开发区内,拥有强大的研发团队,是一家专业从事工程机械研发、制造、销售服务及帮助客户施工管理的高新企业。依托徐州工程机械的发展优势,坚持实施科技创新,采用国际先进制造技术,国际国内顶级配套件,产品达到国际领先水平。

景安重工以创新为依托,以“绿色节能、低碳环保”为发展主旋律,在企业跨越式发展过程中迈出了坚实而有力的步伐,在突破国外技术封锁,核心产品国产化;推动行业技术标准;引领行业产品绿色化和可持续发展等方面实现了系列突破。成熟产品有JSP150H、JAR200H、JAR210H、JAR260H、JAR320H等型号全回转钻机。

景安重工依托徐州中国工程机械之都,和配套服务一体的优势,将继续通过自身的不断努力,为社会和客户持续创造更大的价值,努力打造工程机械制造新局面。

公司秉承与用户共同发展的经营理念,为推动中国的工程机械的发展作出杰出的贡献。

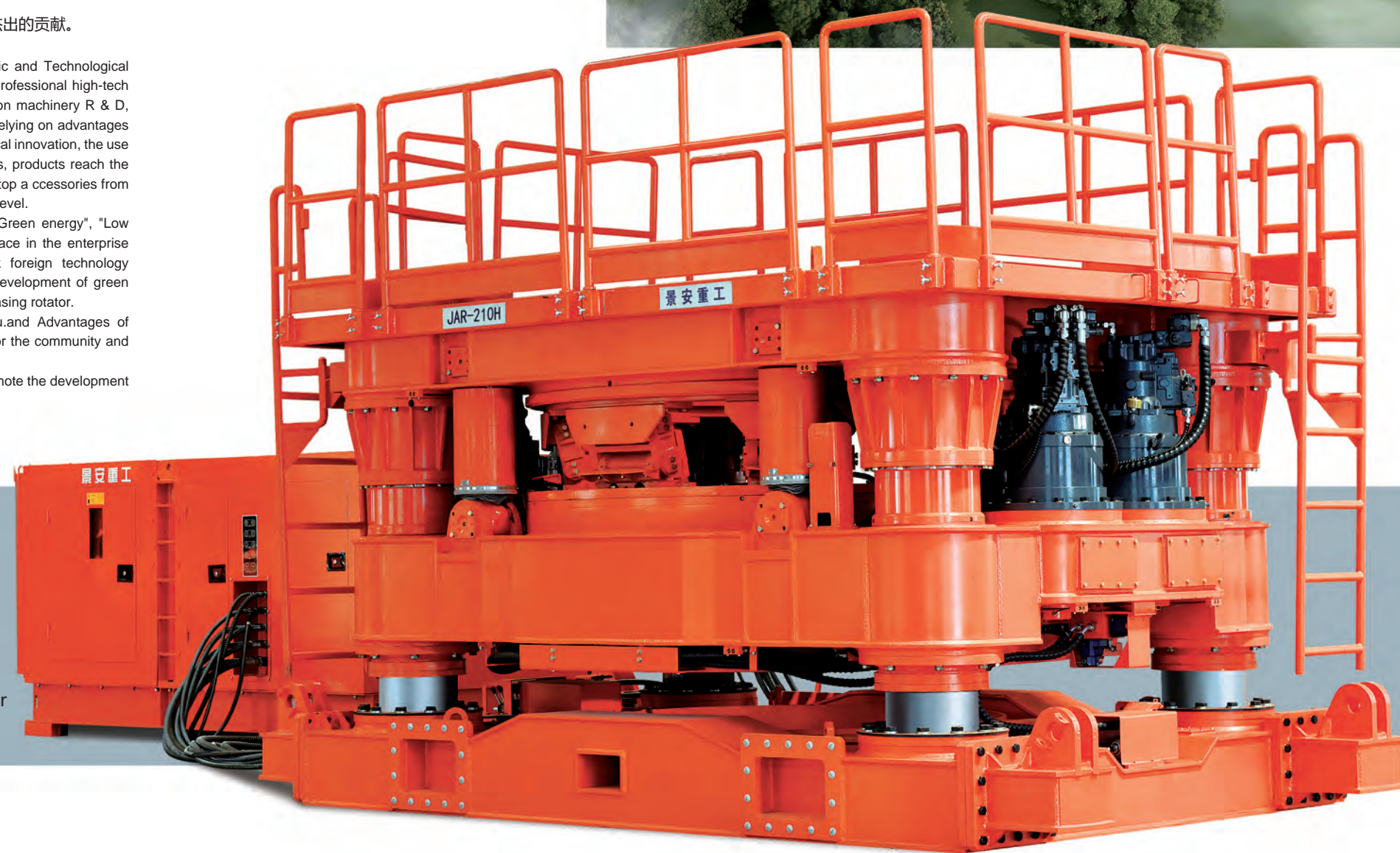
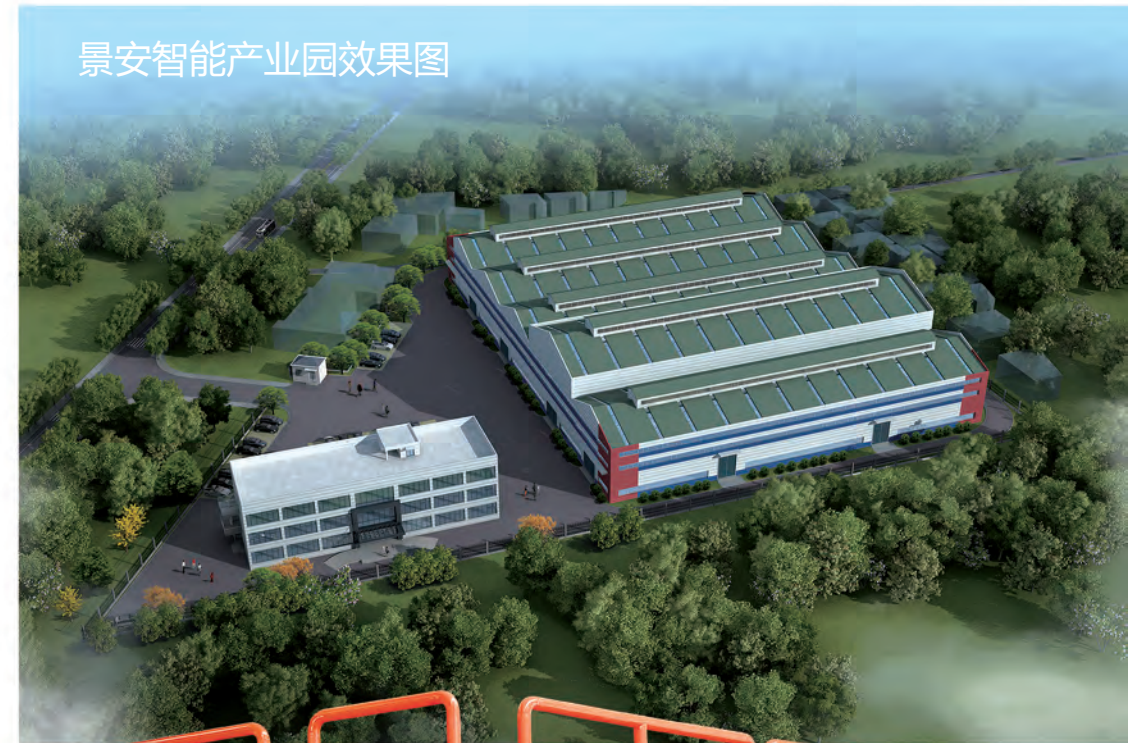
Xuzhou JingAn Heavy Industry Manufacture Co.,Ltd., located in Xuzhou Economic and Technological Development Zone. We own a strong Research and development team, and we are a professional high-tech enterprises that work on engineering machinery research and Specializing in construction machinery R & D, manufacturing, sales and services and to help customers to Construction Management.Relying on advantages of Xuzhou construction machinery.Insist on the implementation of scientific and technological innovation, the use of international advanced manufacturing technology, top international and domestic parts, products reach the international advanced level.Adopt international advanced manufacturing technology and top accessories from international and domestic,So that the products have reached the international advanced level.

JingAn Heavy Industry Manufacture is relying on innovation,The main theme is "Green energy", "Low carbon and environmental protection"for the development.towards a solid and strong pace in the enterprise development by leaps and bounds.To achieve a series of breakthrough in break foreign technology blockade ,core products nationalization, promote industry standardization sustainable Development of green products. Mature products has the JSP150H, JAR200H, JAR210H, JAR260H, JAR320H casing rotator.

JingAn Heavy Industry rely on China Construction Machinery Capital of Xuzhou.and Advantages of integrated support services,We will continue efforts to continue to create greater value for the community and customers,Strive to build a new situation for the construction machinery manufacturing.

Companies adhering to the development philosophy together with the users .To promote the development of China's construction machinery made outstanding contributions.

景安智能产业园效果图



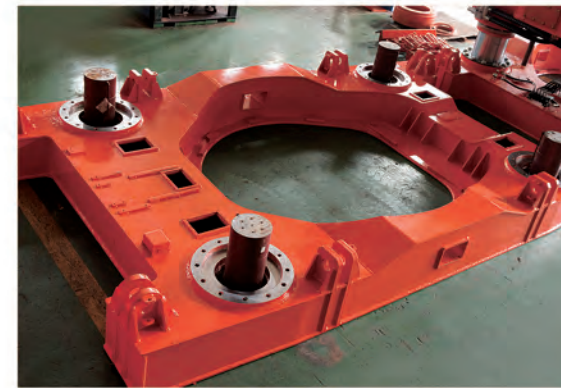
2011年,景泰重工(景安重工前身)
国产第一台全回转钻机
新闻发布会现场
In 2011, JinTai Heavy Industry
The first Chinese-made casing rotator
News Conference Site

主机加工装配

Main machine producing and assembly



大结构件加工 Big Structures Processing



底座安装 Base Installation



传动轴箱安装 Transmission box Installation



顶层支架安装 Superstructure Installation



立柱安装 Stand Column Installation



结构件热处理 Structures Heat Treatment



大锅锥加工 Big Bowl Grab Processing



液压油缸 Hydraulic Cylinder



结构件焊接 Structures Welding



主机生产线 Main engine assembly line

动力站加工装配

Power Station producing and assembly



动力站装配
Power Station Assembly



动力站电泳
Power Station Housings Electrophoresis



动力系统装配 Power System Assembly

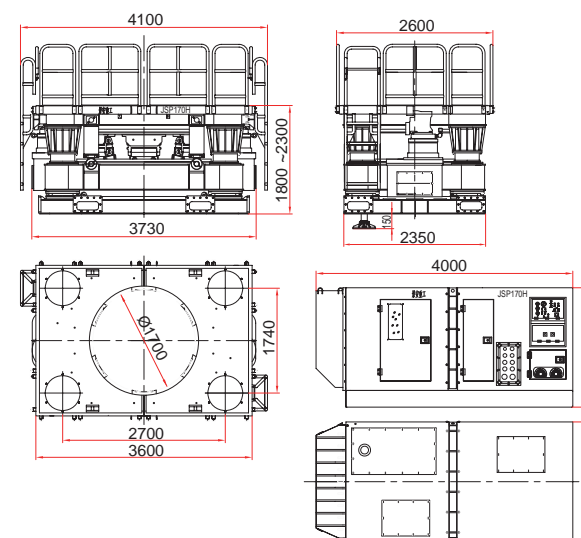


快速接头装配
Quick Change Couplings
Assembly



动力站电气系统
Power Station Electrical
System

全回转钻机Casing Rotator



JSP170H

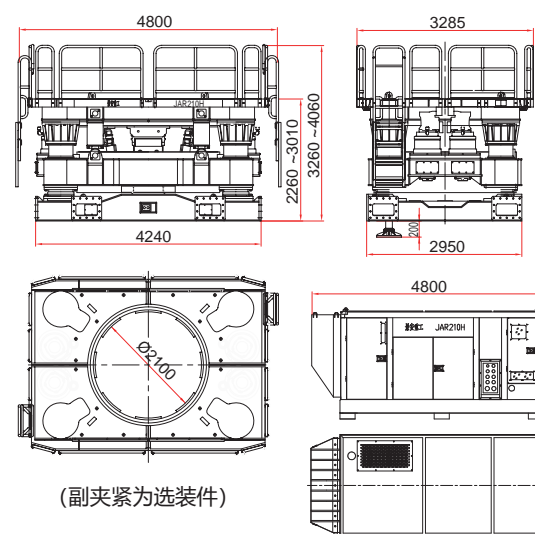
工作装置 Working Device:

钻孔直径	Drilling diameter	mm	Ø800~Ø1700
回转扭矩	Rotary torque	kN-m	1880/970/549
回转速度	Rotating speed	rpm	1.0/1.7/2.9
套管下压力	Lower pressure of sleeve	kN	最大360(可调)+自重180
套管起拔力	Pulling force of sleeve	kN	2690
压拔行程	Pressure pulling stroke	mm	500
主机重量	Weight	ton	27

液压动力站 Hydraulic power station:

发动机型号	Engine model		Cummins QSC8.3-C260
发动机功率	Engine power	kw/rpm	205/1800
动力站重量	Weight	ton	6
控制方式	Control mode		有线遥控

全回转钻机Casing Rotator



(副夹紧为选装件)

JAR210H

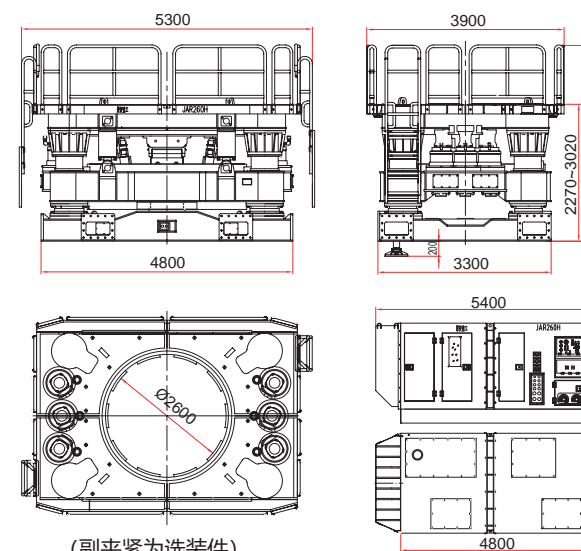
工作装置 Working Device:

钻孔直径	Drilling diameter	mm	Ø1000~Ø2100
回转扭矩	Rotary torque	kN-m	3080/1822/1029瞬时3525
回转速度	Rotating speed	rpm	1.0/1.6/2.6
套管下压力	Lower pressure of sleeve	kN	最大600KN+自重260KN
套管起拔力	Pulling force of sleeve	kN	3760瞬间4300
压拔行程	Pressure pulling stroke	mm	750
主机重量	Weight	ton	45

液压动力站 Hydraulic power station:

发动机型号	Engine model		Cummins QSM11-335(标配) 日野HINO P11C-UP(低噪音型)
发动机功率	Engine power	kw/rpm	272kw/1800rpm 257kw/1850rpm
动力站重量	Weight	ton	8
控制方式	Control mode		有线遥控

全回转钻机Casing Rotator



(副夹紧为选装件)

JAR260H

工作装置 Working Device:

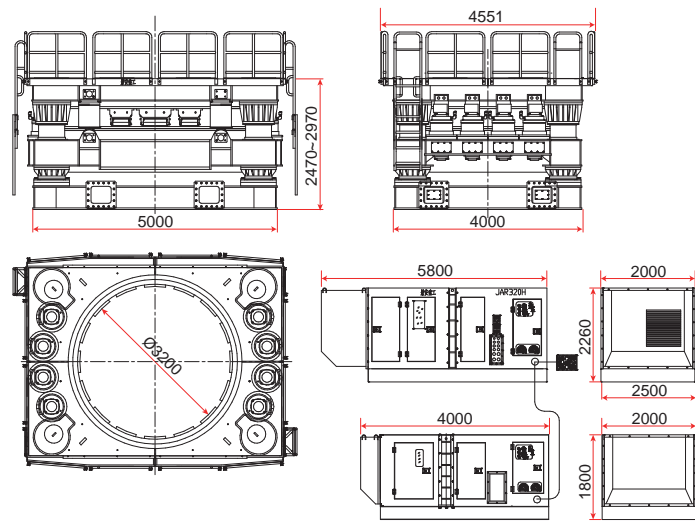
钻孔直径	Drilling diameter	mm	Ø1200~Ø2600
回转扭矩	Rotary torque	kN-m	5292/3127/1766瞬时6174
回转速度	Rotating speed	rpm	0.6/1.0/1.8
套管下压力	Lower pressure of sleeve	kN	最大830+自重350
套管起拔力	Pulling force of sleeve	kN	4560瞬间5160
压拔行程	Pressure pulling stroke	mm	750
主机重量	Weight	ton	53

液压动力站 Hydraulic power station:

发动机型号	Engine model		CAT C15
发动机功率	Engine power	kw/rpm	403kw/1800rpm
动力站重量	Weight	ton	12
控制方式	Control mode		有线遥控

全回转钻机Casing Rotator

JAR320H



工作装置 Working Device:

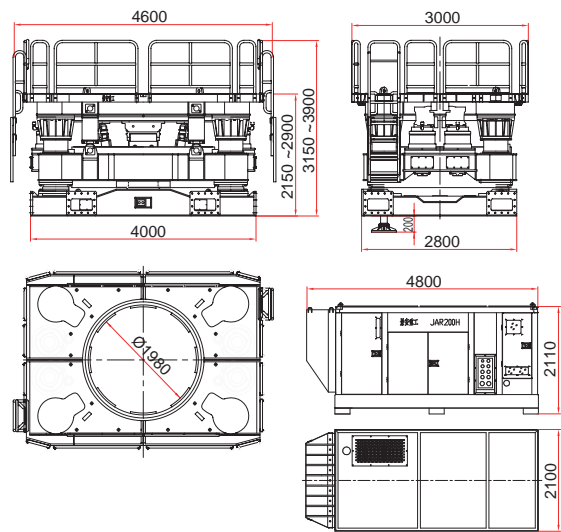
钻孔直径	Drilling diameter	mm	Ø2000~ Ø3200
回转扭矩	Rotary torque	kN-m	9080/5368/3034瞬间10593
回转速度	Rotating speed	rpm	0.4/0.8/1.3
套管下压力	Lower pressure of sleeve	kN	最大1100KN(可调)+自重500KN
套管起拔力	Pulling force of sleeve	kN	7237瞬间8370
压拔行程	Pressure pulling stroke	mm	500
主机重量	Weight	ton	75

液动力站 Hydraulic power station:

	动力站1	动力站2	
发动机型号	Engine model	CAT C15	Cummins QSC8.3-260
发动机功率	Engine power	403kw/1800rpm	205kw/1800rpm
动力站重量	Weight	12 ton	6 ton
控制方式	Control mode	有线遥控	有线遥控

全回转钻机Casing Rotator

JAR200H 出口型



工作装置 Working Device:

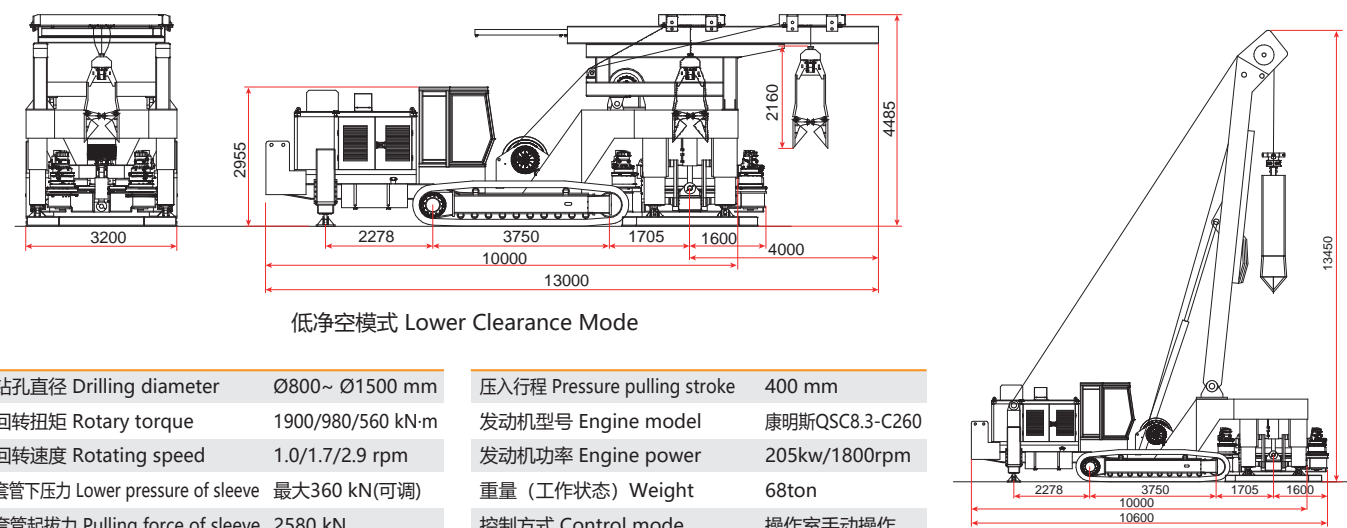
钻孔直径	Drilling diameter	mm	Ø1000~ Ø2000
回转扭矩	Rotary torque	kN-m	2950/1750/1020瞬时3346
回转速度	Rotating speed	rpm	0.85/1.4/2.2
套管下压力	Lower pressure of sleeve	kN	最大600KN+自重220KN
套管起拔力	Pulling force of sleeve	kN	3760瞬间4300
压拔行程	Pressure pulling stroke	mm	750
主机重量	Weight	ton	38

液动力站 Hydraulic power station:

发动机型号	Engine model	HINO P11C-UP	
发动机功率	Engine power	kw/rpm	257kw/1850rpm
动力站重量	Weight	ton	8
控制方式	Control mode	有线遥控	

低净空全回转一体机 Lower Clearance All In One Machine

JAD150



低净空模式 Lower Clearance Mode

常规模式 Conventional Mode

钻孔直径	Drilling diameter	Ø800~ Ø1500 mm	压入行程	Pressure pulling stroke	400 mm
回转扭矩	Rotary torque	1900/980/560 kN-m	发动机型号	Engine model	康明斯QSC8.3-C260
回转速度	Rotating speed	1.0/1.7/2.9 rpm	发动机功率	Engine power	205kw/1800rpm
套管下压力	Lower pressure of sleeve	最大360 kN(可调)	重量 (工作状态)	Weight	68ton
套管起拔力	Pulling force of sleeve	2580 kN	控制方式	Control mode	操作室手动操作

工法实例

Example

桩基施工 Making Piles



美国配套旋挖钻机使用
Ancillary working with rotary drilling rig in America



日本富士山下施工
Working under Mount Fuji



南沙施工
Working in nansha



瑙鲁共和国码头桩基施工
Wharf pile foundation working in Republic of Nauru



澳门桩基施工 (深度90余米)
Pile Foundation Construction in Macau (Pile depth more than 90m)



澳沙四桥
直径2.8米、深度119米桩基施工



紧邻高铁桥墩施工
Adjacent High-speed Rail Bridge Piers Construction

水电站大坝防护桩
Hydroelectric dam fender pile

工法实例

Example

● 清障 Barrier clearance



印尼雅万高铁拔旧桩
Old pile removing in Jakarwan High Speed Railway in Indonesia

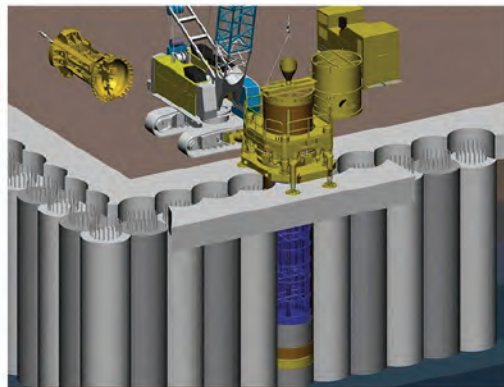


直径1.2米旧桩拔除
1.2 meter diameter old pile remove working



切割钢筋混凝土
Cutting reinforced concrete

● 咬合桩 Secant pile wall



咬合桩全貌
Full View of Secant Pile Wall

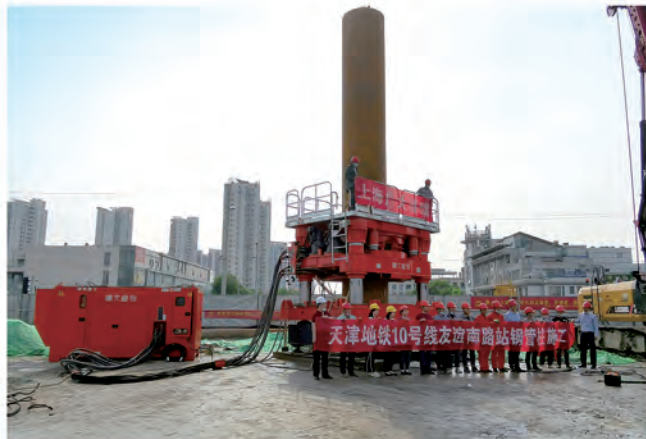


咬合桩开挖效果
Result of secant pile wall



地下智能停车库开挖效果
After digging of Underground Intelligent Parking

● 插桩 Pitching of pile



天津地铁插钢立柱施工
Insert the steel column working in Tianjin subway



深圳湾插钢立柱施工
Insert the steel column working in Shenzhen Bay



钢立柱高精度垂直插入施工
High precision vertical insert the steel column

服务与备件

Service and replacement part



抓斗
Grab bucket

套管
Casing

驱动机构
Driven system

动力站
Power station

反力叉
Reaction arm

配重
Balance-weight

操作台
Operation platform



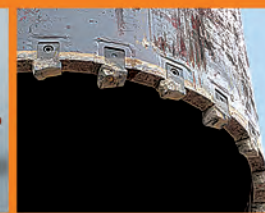
套管
Drive pipe



抓斗
Grab bucket



各种刀头
Various cut bit



装在套管底座上的刀头
Cut bit on casing



螺栓
Bolt



操作台
Operation