



Shenzhen Glida Electronics Co., Ltd



1

Company Profile

2

Products Brief

3

Management structure

4

R&D and Production

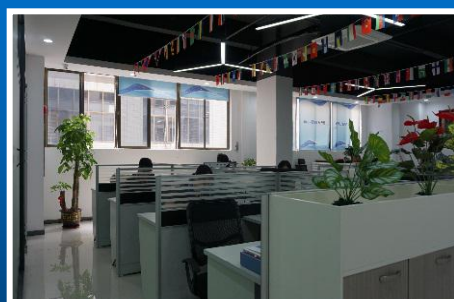
5

Honors & Certification

6

Development & Planning

Company Profile



Shenzhen Glida Electronics Co., Ltd is a national high-tech green energy enterprise which focus in R&D, production and service of lithium battery packs and lithium battery chargers. It is headquartered in Jidali Industry Park, which located in Shenzhen, Chinese most creative city. After years of development, the company has outstanding performance in product quality, technological innovation and full-service, and has established a leading domestic industry position.



- ◆ Glida has advanced lithium battery capacity/ production line/ aging etc equipments. With experienced employees and strict control, Glida make sure every product's quality.
- ◆ The company has built a large-scale battery testing center for the guarantee of "safety batteries". if needed, Glida's batteries can go through most of international authoritative certification agencies' authentication.

Over the years, the company has been pursuing the "customer-centric" corporate culture, Standing on "lithium battery customization", Glida has attracted a group of talents who has rich experience in lithium batteries and chargers, including the electrochemistry, electronics, technological process & structure, etc. The multi-disciplinary and systematic R&D team can fully meet the diversified and individualized needs of customers.



Company Profile



Glida's products has been widely used in aerospace, military, communications, consumer electronics and other fields, its service network throughout China, and sales to Europe, USA, Australia, Japan, South Korea and many other countries.

Now Glida's products has been approved by over 300 domestic and foreign corporate users.

Glida has always adhered to the business philosophy of “good battery starting from 'core'” and been committing to provide super value for customers.

We look forward to working with customers at home and abroad to create a better future together.

GLIDA®
冠力达电池



Enterprise spirit

- ◆Star quality
- ◆"Core" service
- ◆Lead the market



Core Value

Talent

Respect, Loyalty,
Cooperation, Growing together

Market

Quality first, Communication fully,
Service to excellent

Quality

Be serious, Be rigorous, Be strict,
and Pursue zero defects

Pre-sales service commitment

Respond to your technical questions.

Make special design for you if needed.

Reasonable quote within 24 hours.

Welcome your visit at any time and
try to provide you with all the
conveniences.

Sales service commitment

Provide quality products on time and in quantity, and use the best transportation method to ensure goods delivery intactly.

Production strictly accordance with IOS9001:2015 standard and GJB 9001C-2017 standard, or according to customers' required.

01

02

03

04

Actively communicate with customers, respect customer arrangements, and provide thoughtful technical support.

All customers are treated fairly in terms of price and service, regardless of the contract amount.

Service commitment

01

Establish customer profiles and provide relevant technical training and information according to requirements.

02

Committed to the product without quality problem, to ensure that each product 500 cycles \geq 80% capacity ($25^{\circ}\text{C} \pm 2^{\circ}\text{C}$, 4.2V).

03

Commitment to each product one year warranty and lifetime warranty.

Our clients



smart robot: sogou



fire-fighting robot:Dahua



Educational learning machine: Noah



Smart household: Aoke Weiye



Medical Electronics: Terumo



Military industry: Xi'an Beidou

GLIDA®
冠力达电池



Power Lithium Battery

GLIDA®
冠力达电池



Industrial lithium battery

GLIDA®
冠力达电池



Special lithium battery

GLIDA®
冠力达电池



Custom case

GLIDA®
冠力达电池



Energy storage
lithium battery

GLIDA®
冠力达电池



- ◆ Waterproof and aviation connectors, safe and reliable.
- ◆ Using CAN communication protocol to read battery's voltage, current, temperature, capacity and other information.
- ◆ Data communication management, using imported software management chip, accurate data transmission, precise temperature control to minimize safety hazards.

- ◆ **Cells:** 26650/3.2V/3.3Ah
- ◆ **Configuration:**
26650/15S30P/48V/100Ah
- ◆ **Nominal Voltage:** 48V
- ◆ **Nominal Capacity:** 100Ah
- ◆ **Charge Voltage:** 54.75V
- ◆ **Charge current:** $\leq 30A$

- ◆ **Discharge current:** 100A
- ◆ **Instantaneous discharge current:** 200A
- ◆ **Discharge cut-off voltage:** 37.5V
- ◆ **Internal resistance:** $\leq 200m\Omega$
- ◆ **Weight:** $75 \pm 2Kg$
- ◆ **Size:** $520 \times 490 \times 200mm$
- ◆ **Charge temperature:** $0 \sim 45^{\circ}C$

- ◆ **Discharge temperature:** $-20 \sim 60^{\circ}C$
- ◆ **Storage temperature:** $-20 \sim 40^{\circ}C$
- ◆ **Temperature protection:** $70^{\circ}C \pm 5^{\circ}C$
- ◆ **Case material:** Cold rolled sheet metal
- ◆ **Protection:**
SCP, OCP, OCP, ODP, OCP, OTP, equalization, etc
- ◆ **Usage Application:** Robot/AGV/RGV etc

GLIDA®
冠力达电池



This AGV trolley LFP power battery has the is compact structure, low internal resistance, high reliability, high capacity, long working life and excellent low temperature working performance. It has high current and fast charging, and is resistant to overcharging and overdischarging. It's suitable for power tools and electric vehicles such as AGV etc.

- ◆ **Model name:** HPB-801-21
- ◆ **Energy:** 2560Wh
- ◆ **Nominal voltage:** 48V
- ◆ **Nominal capacity:** 50Ah
- ◆ **Charge current:** 10A
- ◆ **Rate discharge current:** 20A
- ◆ **Instantaneous discharge current:** 50A
- ◆ **Internal resistance:** 40mΩ
- ◆ **Weight:** 35Kg
- ◆ **Working temperature:**
charge 0~45°C, discharge -20~60°C
- ◆ **Size:** 456.5*441*133mm
- ◆ **Communication:** RS232、RS485
- ◆ **Usage application:** AGV、RGV、industrial robots, service robots, automation systems, intelligent logistics trucks, special robots and other intelligent automatic logistics handling equipment.

GLIDA®
冠力达电池



Characteristics

- ◆ **Communication function:** use I2C communication mode to monitor and transmit battery information in real time;
- ◆ **Output:** use the the same port to increase the conductivity reliability;
- ◆ **Data communication management:** Seiko IC + TI charging management chip to make sure accurate data transmission, precise temperature control, and minimize safety hazards.
- ◆ The battery pack has good safety, low temperature performance and long cycle life;
- ◆ The battery pack has a high cycle life and meets the concept of low carbon, energy saving and environmental protection;



定制案例

GLIDA®
冠力达电池



- ◆ Size: 80.5×49.5×10.75mm
- ◆ Weight: 95g
- ◆ Internal resistance: $\leq 180m\Omega$
- ◆ Charging current: 0.8A
- ◆ Discharge current: 1.0A
- ◆ Max working current: 1.5A

- ◆ Max start current: 6-8A within 10ms
- ◆ Charging Voltage: 4.2V
- ◆ Discharge cutt-off voltage: 3.0V
- ◆ Charge temperature: 0~45°C
- ◆ Discharge temperature: -30~70°C
- ◆ Working voltage range: 3.2~4.2V

- ◆ Capacity: 4000mAh
- ◆ Working time: 180 minutes
- ◆ Management: Communication
☐ SMBUS ☐ I2C ☐ HDQ
- ◆ Life time: 0.5C charge 0.5C discharge, ≥ 300 times



As smart sweeping robots enter thousands of households, people's requirements for sweeping robot batteries are gradually improved. The focus is on energy saving and environmental protection, long service life, safety and stability, and is suitable for ambient temperature in various regions.

- ◆ **Model name:** 18650/4S1P/2600mAh/14.8V
- ◆ **Nominal voltage:** 14.8V
- ◆ **Nominal capacity:** 2600mAh (0.2C discharge to 10.8V)
- ◆ **Voltage on shipment:** 15.2V~15.8V
- ◆ **Size:** MAX71×38×38mm
- ◆ **Internal resistance:** ≤380mΩ

- ◆ **Standard:** GB31241-2014
- ◆ **Warranty:** 12 months
- ◆ **Working temperature:** 0~45°C (charge), -20~60°C (discharge)
- ◆ **Charging :** charge cut-off voltage: 16.8V, charge current: 1300mA (standard), 2600mA (max)
- ◆ **Discharging:** discharge cut-off voltage: 10.8V, discharge current: 520mA (standard), 2600mA (最大)

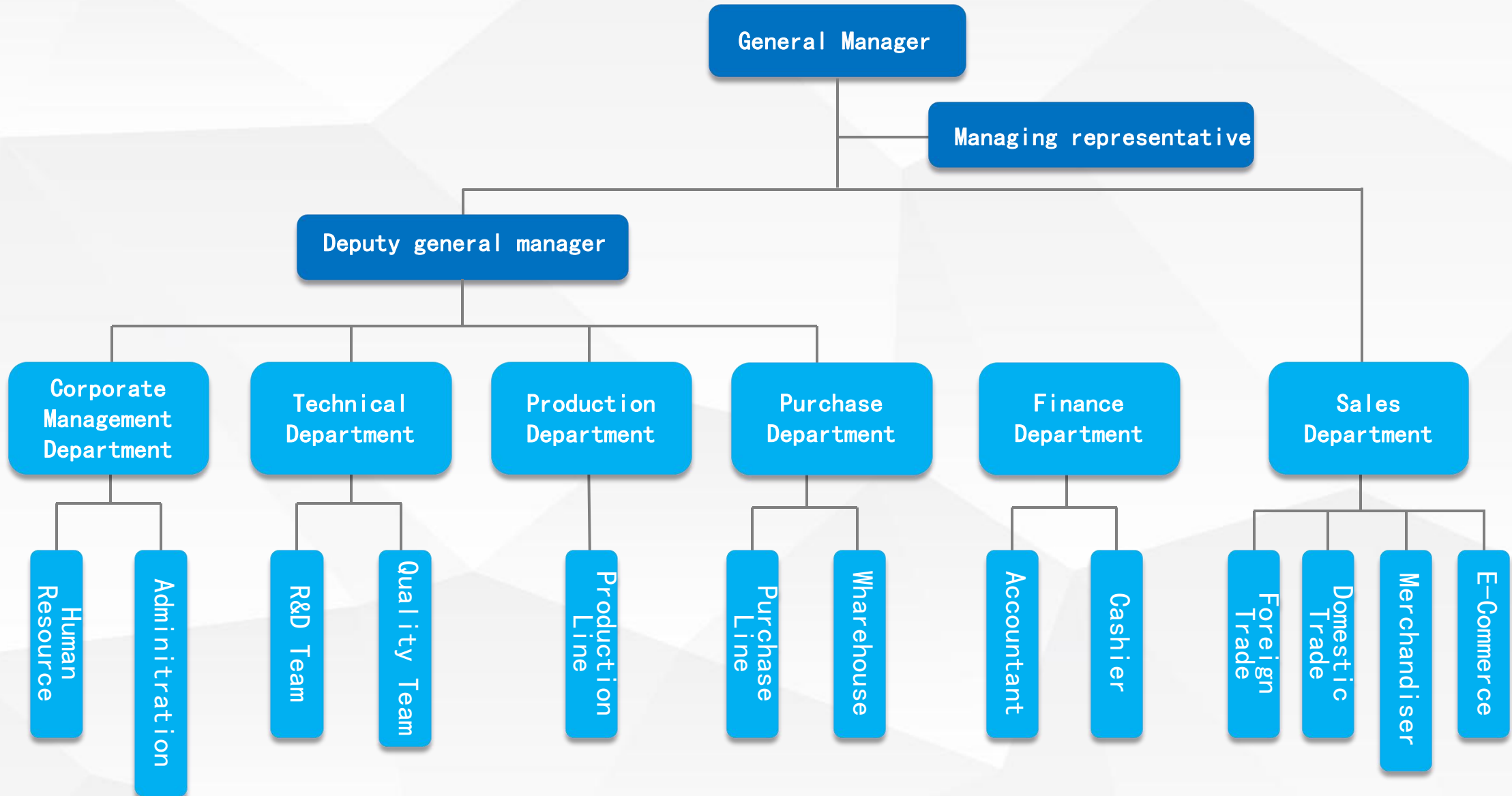
GLIDA®
冠力达电池



LED advertising light backup battery requires continuous power supply for more than 10 hours, and requires 2 years without battery replacement. We use all imported Sanyo 18650 cells, 3S4P pack and with good optimization design to achieve customer requirement.

- ◆ **Cell:** 18650
- ◆ **Capacity:** 10400mAh
- ◆ **Nominal voltage:** 11.1V
- ◆ **Working voltage:** 8.1-12.6V
- ◆ **Internal resistance:** $\leq 180\text{m}\Omega$
- ◆ **Size:** 140*112*20mm
- ◆ **Package:** blue PVC
- ◆ **Wire:** UL3239/18#, 100mm length
- ◆ **Protection board:** S-8254AAWFT-TB-X+A04407*4+R010*2
- ◆ **Parameters:** OCP voltage $4.25 \pm 0.025\text{V}$ (single cell), ODP voltage $3.0 \pm 0.08\text{V}$ (Single cell), over current 15-25A
- ◆ **Cycle times:** 0.5C charge 0.2C discharge ≥ 500

Management structure





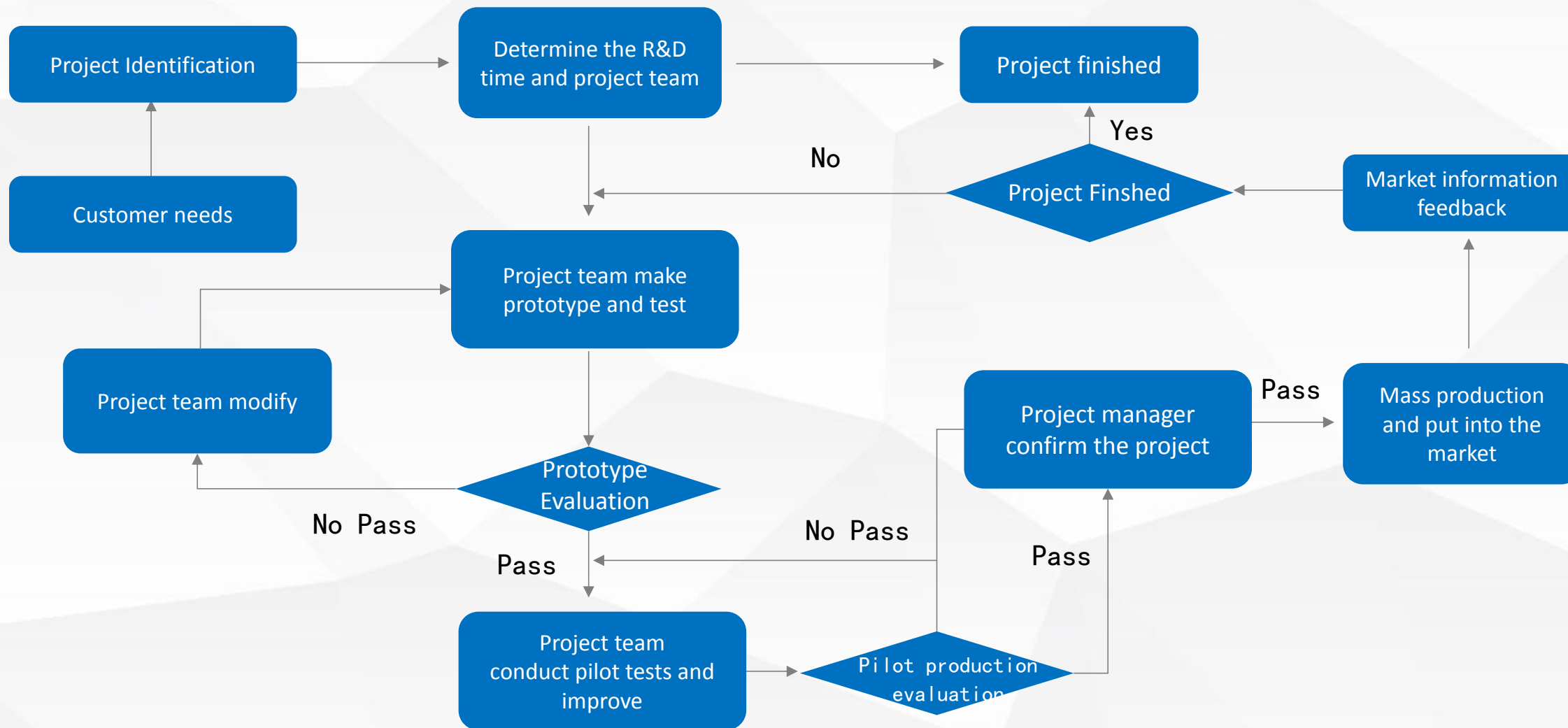
- ◆ Glida has been insisting on technological innovation unswervingly. The company has the first-class pilot production and testing & evaluation equipments on lithium battery, which can quickly transform the design concept into actual products, fully guaranteeing the design progress and development quality.
- ◆ The company has a strong design and development strength. After years of talent accumulation, now Glida have a high-quality R&D and production team composed of materials, electrochemistry, software, machinery, molds and other experts.



Glida has established a strict quality assurance system in accordance with the ISO9001:2015 system and GJB9001C-2017 standard requirements. The system consists of IQC, IPQC, QA, QE, FQC, and more than 30 highly trained quality personnel. Equipped with advanced testing equipment such as ICP, CIS, high and low temperature test chambers and many more laboratory instruments, Glida is sure to provide customers with stable and reliable high-quality batteries.



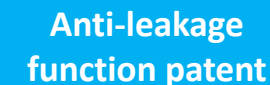
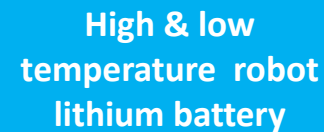
- ◆ Glida controls every production process strictly. All processes are executed according to the standard SOP.
- ◆ “True core” material and experienced skilled workers ensures real quality products. Glida insist on Zero error in every step to reduce defective products. Choosing best cells, being strict in operation procedure, concerning inspection before shipment. Glida try to offer real good batteries for every customer.



GLIDA®
冠力达电池



GLIDA®
冠力达电池



◆ Shenzhen Glida Electronics
Co., Ltd founded in Shenzhen

◆ HK GLIDA TECHNOLOGY GROUP
LIMITED founded in HK

Panasonic / LG / Seiko /
LiTongWei has been
partners of Glida

Grown obtained ISO9001:2008
standard certificate

2009年

2010年

2012年

2014年

2015年

Brand company Shnehzne Chilong
New Energy Technology Co., Ltd
founded in Shenzhen

Become a partner of
Beidou Tiandi Co., Ltd.

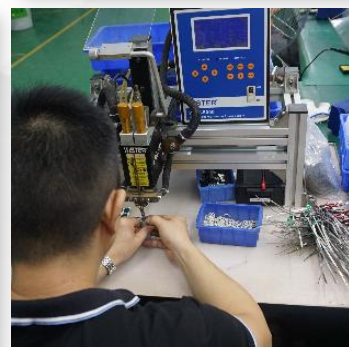
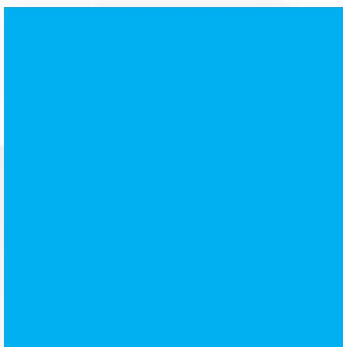
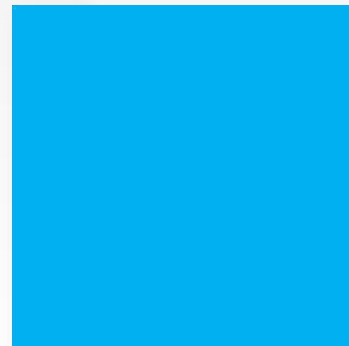
- ◆ Glida obtained ISO9001:2015 standard certificate
- ◆ Glida obtained the GJB9001C-2017 standard certificate.
- ◆ Glida become a partner of Zhejiang Dahua Technology Co., Ltd.

Glida established East China Office in Suzhou, Jiangsu



Become a partner of China Nuclear Power Research and Design Institute

Glida obtained the national high-tech enterprise certificate



Glida will continue to focus on the globalization strategy in the next three years, and try to fulfill following achievements.



- ◆ Optimize customer structure and strive to be a part of the purchase chain of multinational companies.
- ◆ Adopt a proactive and aggressive marketing strategy on market development to form a nationwide sales network.
- ◆ Continue to increase R&D investment on new technology, material and process, recruit and train more talents. It is expected that the company will get over 10 invention patents, and over 20 invention patents in applying in next 3 years. R&D investment will be doubled compared to current level and reach 5% of annual sales.



Thank you !