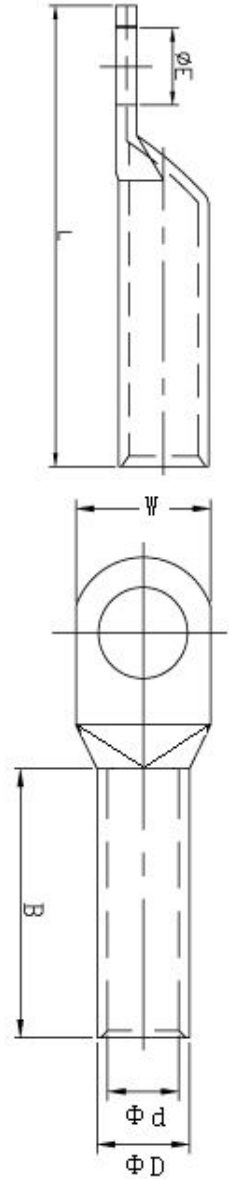


DIN46235 COPPER TUBE TERMINALS **DIN46235铜管端子**



PART NO 2015-2018	ITEM NO	DIMENSIONS					
		ΦE	ΦD	Φd	W	B	L
LY0012-2001	DIN6-5	5.3	5.5	3.8	8.5	10.0	30.5
LY0012-2002	DIN6-6	6.4	5.5	3.8	8.5	10.0	31.5
LY0012-2003	DIN6-8	8.4	5.5	3.8	13.0	10.0	34.0
LY0012-2004	DIN10-5	5.3	6.0	4.5	9.0	10.0	34.0
LY0012-2005	DIN10-6	6.4	6.0	4.5	9.0	10.0	34.5
LY0012-2006	DIN10-8	8.4	6.0	4.5	13.0	10.0	37.0
LY0012-2007	DIN10-10	10.5	6.0	4.5	15.0	10.0	39.0
LY0012-2008	DIN16-6	6.4	8.5	5.5	13.0	20.0	43.5
LY0012-2009	DIN16-8	8.4	8.5	5.5	13.0	20.0	46.0
LY0012-2010	DIN16-10	10.5	8.5	5.5	17.0	20.0	48.0
LY0012-2011	DIN16-12	13.0	8.5	5.5	18.0	20.0	49.0
LY0012-2012	DIN25-6	6.4	10.0	7.0	14.0	20.0	45.5
LY0012-2013	DIN25-8	8.4	10.0	7.0	16.0	20.0	48.0
LY0012-2014	DIN25-10	10.5	10.0	7.0	17.0	20.0	50.0
LY0012-2015	DIN25-12	13.0	10.0	7.0	19.0	20.0	51.0
LY0012-2016	DIN35-6	6.4	12.5	8.2	17.0	20.0	49.5
LY0012-2017	DIN35-8	8.4	12.5	8.2	17.0	20.0	52.0
LY0012-2018	DIN35-10	10.5	12.5	8.2	19.0	20.0	54.0
LY0012-2019	DIN35-12	13.0	12.5	8.2	21.0	20.0	55.0
LY0012-2020	DIN35-14	15.0	12.5	8.2	21.0	20.0	56.5
LY0012-2021	DIN50-8	8.4	14.5	10.0	20.0	28.0	62.0
LY0012-2022	DIN50-10	10.5	14.5	10.0	22.0	28.0	64.0
LY0012-2023	DIN50-12	13.0	14.5	10.0	24.0	28.0	65.0
LY0012-2024	DIN50-14	15.0	14.5	10.0	24.0	28.0	66.5
LY0012-2025	DIN50-16	17.0	14.5	10.0	28.0	28.0	68.0
LY0012-2026	DIN70-8	8.4	16.5	11.5	24.0	28.0	65.0
LY0012-2027	DIN70-10	10.5	16.5	11.5	24.0	28.0	67.0
LY0012-2028	DIN70-12	13.0	16.5	11.5	24.0	28.0	68.0
LY0012-2029	DIN70-14	15.0	16.5	11.5	24.0	28.0	69.5
LY0012-2030	DIN70-16	17.0	16.5	11.5	30.0	28.0	71.0
LY0012-2031	DIN95-8	8.4	19.0	13.5	28.0	35.0	77.0
LY0012-2032	DIN95-10	10.5	19.0	13.5	28.0	35.0	77.0
LY0012-2033	DIN95-12	13.0	19.0	13.5	28.0	35.0	78.0
LY0012-2034	DIN95-14	15.0	19.0	13.5	28.0	35.0	79.5
LY0012-2035	DIN95-16	17.0	19.0	13.5	32.0	35.0	81.0
LY0012-2036	DIN120-10	10.5	21.0	15.5	32.0	35.0	85.0
LY0012-2037	DIN120-12	13.0	21.0	15.5	32.0	35.0	86.0
LY0012-2038	DIN120-14	15.0	21.0	15.5	32.0	35.0	88.0
LY0012-2039	DIN120-16	17.0	21.0	15.5	32.0	35.0	89.0
LY0012-2040	DIN120-20	21.0	21.0	15.5	38.0	35.0	91.0
LY0012-2041	DIN150-10	10.5	23.5	17.0	34.0	35.0	93.0
LY0012-2042	DIN150-12	13.0	23.5	17.0	34.0	35.0	94.0
LY0012-2043	DIN150-14	15.0	23.5	17.0	34.0	35.0	97.0
LY0012-2044	DIN150-16	17.0	23.5	17.0	34.0	35.0	97.0

LY0012-2045	DIN150-20	21.0	23.5	17.0	40.0	35.0	99.0
LY0012-2046	DIN185-10	10.5	25.5	19.0	37.0	40.0	97.0
LY0012-2047	DIN185-12	13.0	25.5	19.0	37.0	40.0	98.0
LY0012-2048	DIN185-14	15.0	25.5	19.0	37.0	40.0	101.0
LY0012-2049	DIN185-16	17.0	25.5	19.0	37.0	40.0	101.0
LY0012-2050	DIN185-20	21.0	25.5	19.0	40.0	40.0	103.0
LY0012-2051	DIN240-12	13.0	29.0	21.5	42.0	40.0	108.0
LY0012-2052	DIN240-14	15.0	29.0	21.5	42.0	40.0	111.0
LY0012-2053	DIN240-16	17.0	29.0	21.5	42.0	40.0	111.0
LY0012-2054	DIN240-20	21.0	29.0	21.5	45.0	40.0	113.0
LY0012-2055	DIN300-12	13.0	32.0	24.5	46.0	50.0	119.0
LY0012-2056	DIN300-14	15.0	32.0	24.5	46.0	50.0	119.0
LY0012-2057	DIN300-16	17.0	32.0	24.5	46.0	50.0	119.0
LY0012-2058	DIN300-20	21.0	32.0	24.5	46.0	50.0	122.0
LY0012-2059	DIN400-14	15.0	38.5	27.5	55.0	70.0	140.0
LY0012-2060	DIN400-16	17.0	38.5	27.5	55.0	70.0	140.0
LY0012-2061	DIN400-20	21.0	38.5	27.5	55.0	70.0	140.0
LY0012-2062	DIN500-16	17.0	42.0	31.0	60.0	70.0	150.0
LY0012-2063	DIN500-20	21.0	42.0	31.0	60.0	70.0	150.0
LY0012-2064	DIN625-16	17.0	44.0	34.5	64.0	80.0	160.0
LY0012-2065	DIN625-20	21.0	44.0	34.5	64.0	80.0	160.0
LY0012-2066	DIN800-16	17.0	52.0	40.0	75.0	100.0	195.0
LY0012-2067	DIN800-20	21.0	52.0	40.0	75.0	100.0	195.0
LY0012-2068	DIN1000-16	17.0	58.0	44.0	85.0	100.0	195.0
LY0012-2069	DIN1000-20	21.0	58.0	44.0	85.0	100.0	195.0