



ZJF 系列泡沫泵

ZJF SERIES OF FROTH PUMPS



特点和用途:

ZJF系列泡沫泵是石家庄耐普泵业有限公司设计制造的新型高效节能产品,该型泵在工作时能部分消除浆体中的泡沫,输送能力远远超过其他型式产品,而且不需要任何轴封和轴封水,是输送泡沫类浆体的理想型泵。

该型泵泵头部分结构为双泵壳结构,过流部件采用硬镍、高铬或橡胶材料,其传动部分与ZJL(R)型泵传动部件通用,漏斗状料箱为钢板结构件,并可根据输送介质的不同,在料箱内壁覆盖内衬,泵的吐出口位置可按45°间隔,旋转八个不同的角度安装使用。该泵具有性能优良,拆装方便,可靠性高等优点。

APPLICATION AND FEATURES

ZJF Series of Froth Pumps is a efficiency pump product which is manufactured only by--Shijiazhuang Naipu Pump Co., Ltd under the advanced manufacture technology introduced from one famous Australian company These froth pumps are suitable for handling solids-liquid mixture, special for delivering frothy pulp generated in flotation machines in metalliferous and coal flotation circuits.

The basic principle of the pump operation is to de-aerate or partially de-aerate the froth before it enters the pumping. Its handling capacity of the pump is much higher than that of other types of slurry pump without shaft seal and sealing water. The froth pump is a perfect pump for handling frothy pulp indeed.

The construction of pump head is double casings slurry pump. All wet-parts can be supplied in Ni-hard, high chrome alloy iron and pressure-moulded natural or synthetic rubber. The driver end can be exchanged with that of type--ZJL(R) pumps. The hopper-tank is fabricated with steel plate. Its inner wall of the tank can be covered with liner according to different medium pumped. The discharge branch can be positioned at intervals of 45 degrees by request and oriented to any eight positions to suit installations and applications. The advantages of the pump are of excellent performance, easy assembly & disassembly, high and etc.

型号意义:

100ZJF——RV

100 —— 泵吐出口直径(英寸)

ZJF —— 泡沫泵

RV —— 托架形式

TYPE NOTATION

100ZJF——RV

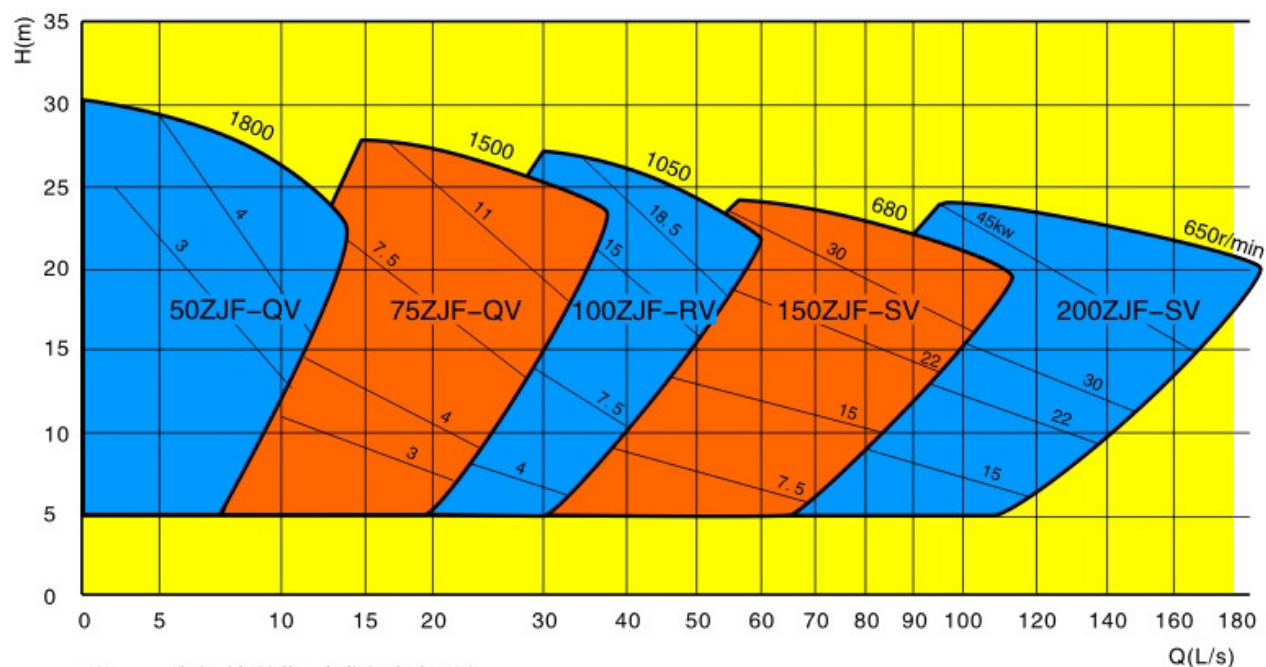
100 —— Discharge diameter (inch)

ZJF —— Froth pump

RV —— Frame type

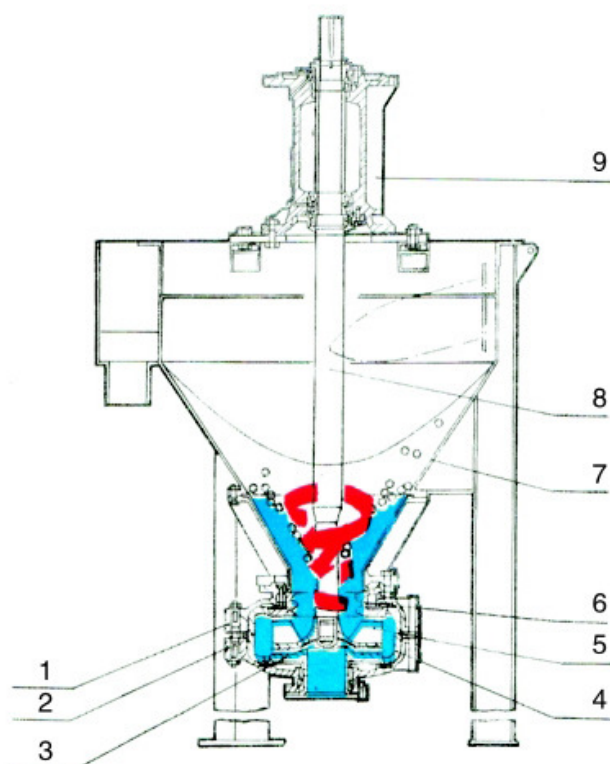
ZJF 系列泡沫泵型谱

SELECTION CHART FOR SERIES ZJF FROTH PUMPS



ZJF系列泡沫泵结构

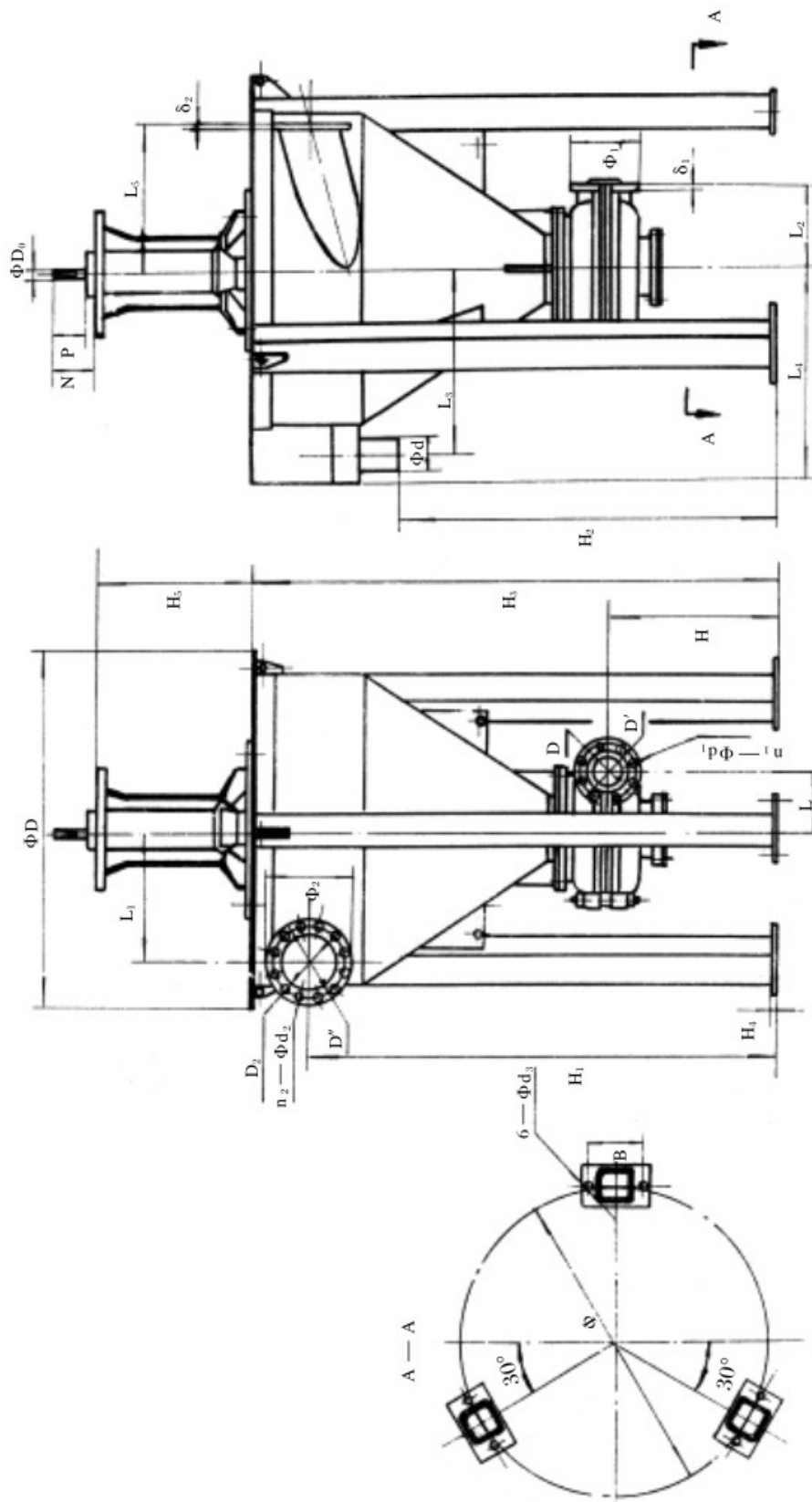
CONSTRUCTION DRAWING OF ZJF SERIES FROTH PUMP



- | | |
|---------|--------------------------|
| 1、泵体 | FRAME PLATE |
| 2、泵盖 | COVER PLATE |
| 3、前护板 | COVER PLATE LINER INSERT |
| 4、护套 | VOLUTE LINER |
| 5、叶轮 | IMPELLER |
| 6、螺旋后护板 | FRAME PLATE LINER INSERT |
| 7、料箱 | TANK |
| 8、轴 | SHAFT |
| 9、轴承体 | BEARING HOUSE |

ZJF 系列泡沫泵外形和安装尺寸

OUTLINE DIMENSIONS & INSTALLATIONS OF ZJF SERIES FROTH PUMP



泵型号 Pump Size	尺 寸 Dimension														吐出法兰 Discharge flange					吸入法兰 Intake flange												
	H	H ₁	H ₂	H ₃	H ₄	H ₅	L	L ₁	L ₂	L ₃	L ₄	L ₅	Ø	B	ØD	N	P	Ød	Ød ₃	ØD ₆	D ₁	D'	Ø ₁	n ₁	Ød ₁	δ ₁	D ₂	D"	Ø ₂	n ₂	Ød ₂	δ ₂
50ZJF-QV	382	1140	850	1300	12	474	138	360	210	480	565	380	800	140	938	174	110	100	19	40	51	146	184		19	25	102	178	216	4	19	12
75ZJF-QV	467	1250	950	1400			149	354	262	510	625	445	840					168	18		76	191	229	4		27	152	235	279		18	16
100ZJF-RV	506	1720	1310	1910	16	637	229	537	338	740	860	600	1230	230	1444	238	170	150	19	65	102	235	279			32	203	292	337	8	19	12
150ZJF-SV	791	2430	1950	2770	20	875	318	696	460	1020	1180	800	1700	300	1970	300	210	219	22	80	152	324	365	8	21	38	305	406	457	12	22	20
200ZJF-SV							381		470												203	375	432		29	44						