

山东日发纺织机械有限公司

SHANDONG RIFA TEXTILE MACHINERY CO.,LTD

Add: Noth Head of Zhonghua Road, Economic &
Techonoligical Development Zone, Liaocheng,
Shandong, China (252000)

地址：山东省聊城市经济开发区中华路北首

电话 (Tel) 86-635-2999515

86-635-2999585

(International Trade Department)

传真 (Fax) 86-635-8516735

客户中心：400-926-1888

Email: sale_sd@rifa.com.cn

Http://www.rifatm.com www.rifasd.com

Loom system
Water jet loom 织造系统 / 喷水织机

本样本仅供参考，不作为技术验收的依据。
为提高产品质量，本公司保留更改规格之权力，恕不
另行通知。

This brochure is only for your reference, not for any
basis of checking and acceptance.

To keep up with advancement technology, we
reserve the right to change the specifications without
prior notice.

山东日发纺织机械有限公司是由浙江日发纺织机械有限公司控股、聊城市昌润投资发展有限责任公司和部分员工共同出资组建的具有独立法人的有限责任公司。公司拥有自营进出口权,通过了ISO9001:2000质量管理体系认证,是“国家高新技术企业”。企业技术中心为“山东省剑杆织机工程技术研究中心”。

山东日发致力于研发、制造具有国际水准的各类无梭织机,主要产品为系列剑杆织机、毛巾织机、喷气织机、喷气毛巾织机、喷水织机。公司是有近二十年专业生产高档无梭织机的历史,已有几万台织机销往欧洲、亚洲、非洲等十几个国家及全国20多个省市区。目前织机可适于各种纤维,如棉、毛、丝、麻、以及特种纱;涉及多个领域,如毛巾、棉、毛、丝的时装面料和家纺装饰布、工业用布等,多数填补了国内织造行业的空白。

公司以成为“敏捷化的国际性公司”为愿景,以“在机电产品制造领域向客户提供工业加工过程的单台设备、工段、车间、组合生产线,协助客户实现数字化工厂梦想”为使命,致力于创造崭新的“数字科技”理念,在未来的整机生产中,建立“人流、物流、信息流”的互动平台,实现科技、环境、制造的和谐统一。铸就“信息化、敏捷化、国际化”的机械制造生产基地而坦然前行。



Shandong Rifa Textile Machinery Co., Ltd is controlled and founded by Zhejiang Rifa Textile Machinery Co., Ltd, Liaocheng Changrun Investment Development Co., Ltd. as well as some managerial persons and staff. The company has got ISO9001:2000 Quality System Certificate; it is Shandong Province High-technology Enterprise and Investigation & Research Center, also is Shandong Province Rapier Loom Engineering Technology Investigation Center.

Shandong Rifa is the main base of shuttleless loom manufacture and investigation; the company is devoting herself into manufacturing all kinds of shuttleless looms with the leading main products of air jet looms, rapier looms, terry looms of rapier and air jet, water jet looms. The company is one of the earliest manufacturers for rapier looms in China, has more than 20-year professional experience of manufacturing rapier looms, more than thirty thousand looms were sold in Europe, Asia, Africa, etc. At present the machines we manufacture includes cotton loom, worsted loom, slub wool loom, linen loom, ramie loom, jute loom, denim loom, silk loom, terry loom, jacquard loom, label loom, wide width upholster fabric loom, industrial & percolation fabric loom, special net fabric loom, etc.

“Become a quick response international enterprise” is our target, and supply to the customers with single equipment, workshop section, workshop, combined product line in the area of machinery-electronic industry, assisting our customers realize their dreams of digital factory which is also the mission of RIFA. Shandong Rifa Textile Machinery Co., Ltd. devoting itself to create a whole new theory of digital technology, establishing the interactive platform for people flow, material flow and information flow, realizing harmony & unify for science and technology, environment and manufacturing.





RFJW10 型喷水织机

RFJW10 WATER JET LOOM

领先、专业，让您的织造更加简单！
Advanced, Professional, make weaving simple!

RFJW系列喷水织机秉承日发纺机RFJA系列喷气织机的技术，以节能、低耗、高速、高效与广泛的品种适应性为设计理念而开发的一款高速喷水织机。

该机通过全新立体设计和计算机解析组合，并利用虚拟样机技术设计了引纬、开口和打纬机构，使织机在同等织造条件下比国内同类产品振动低25%以上，能耗低5%以上，同时在高速适应性与品种适应性上表现优异，是目前市场上性能比最优秀的产品之一。

- >>优越的高速性能
- >>广泛的产品适应性
- >>良好的可操作性
- >>可靠的品质保障
- >>优良的环境保护措施

RFJW series Water Jet looms succeed the technology of RFJA air jet looms, it's designed for high speed, low consumption and wide weaving range.

Newly designed by three-dimensional designing software and computer analytic combination. The weft insertion, shedding and beating-up mechanism were designed by the technology of virtual prototype. More than 25% vibration can be reduced and more than 5% power can be saved than normal looms. It shows excellent performance on flexibility for high speed and wide weaving versatility. RFJW water jet loom is one of the best choices for economic weaving.

- >>High speed performance
- >>Wide wovenable range
- >>Easy operation
- >>Reliable quality warranty
- >>Perfect environmental protection



【高速高效】

“RFJW10”机架构造刚度韧度优化加强，引纬打纬更加稳定，使高速性能表现卓越。

【High Speed & High Efficiency】

Highly strengthened frames of RFJW10 looms ensures stable insertion and excellent performance.

【通用广泛】

新型陶瓷喷嘴提升织机高速状态下引纬的稳定性；缩短织前布经路，提升高密度织造的稳定性。使织机能从容应对细支纱到粗支纱、窄幅到宽幅及不平衡组织的织物。

【Wide Weaving range】

New type ceramic nozzles can enhance the stability of insertion during high speed running. It is easy for this model looms to weave finest and thickest yarn, narrow and wide fabrics, high pick density and double layer fabrics.

【操作简便】

“RFJW10”充分考虑人机工程，力求操作舒适简便，降低经位置线，提高操作工的舒适度，通过高清晰彩色触摸屏的人机对话界面，基本实现全部设定的简便化，发挥出卓越的操作性能。

【Easy Operation】

Ergonomics is fully considered on RFJW10 looms. Reducing warp location line makes operating more comfortable and easy. Actualize man-machine conversation through high clear colored touching screen.

【品质保障】

“RFJW10”强化关键零部件，优选供应商，保证整机品质，并具有完善的全方位的售前、售中和售后服务体系。

【Reliable Quality】

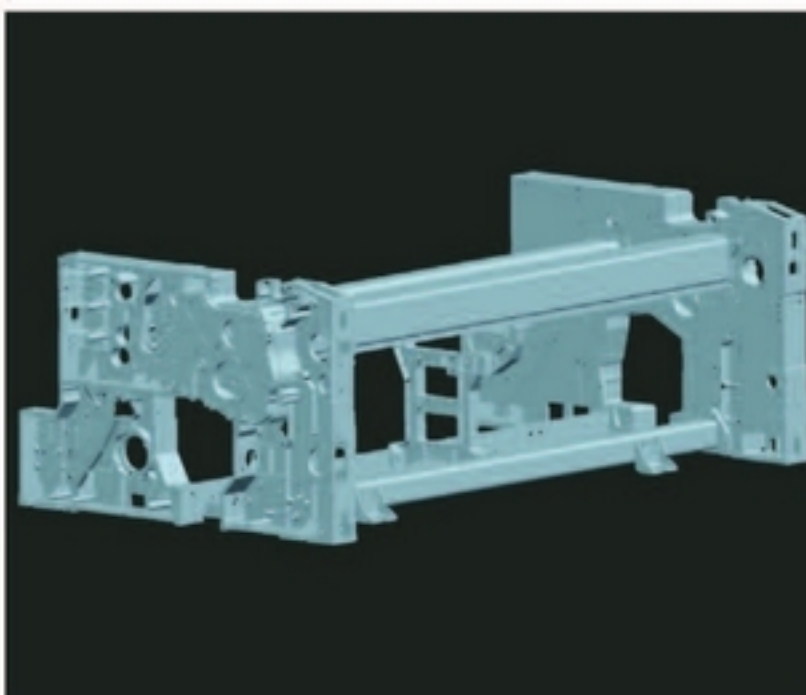
Reliable quality of parts and machine, perfect service of pre-sales, sales and after sales.

【环境保护】

日发纺机积极致力于环境保护，“RFJW10”利用虚拟样机技术，通过优化结构，比市场现有织机能耗降低5%，振动降低25%。

【Environmental protection】

Rifa applies to environmental protection, through the technology of virtual prototype 5% power consumption can be saved and 25% vibration can be reduced.



【坚固强韧的机架】

墙板采用整体式，送经墙板与侧墙板一体铸造成型，箱型结构的墙板与加强设计的横梁组合构成强韧的机架，并增加中间支撑，刚性提升的同时，有效防止了共振并大幅降低了地面震动和运行噪音，使织机的高速运转更加稳定。

【Strong Frame Structure】

Let-off frame and side frame are cast together; box type side frames and strengthened chest beam constitute the machine frame. And adding center supports to increase the rigidity and reduce the vibration & sounds.

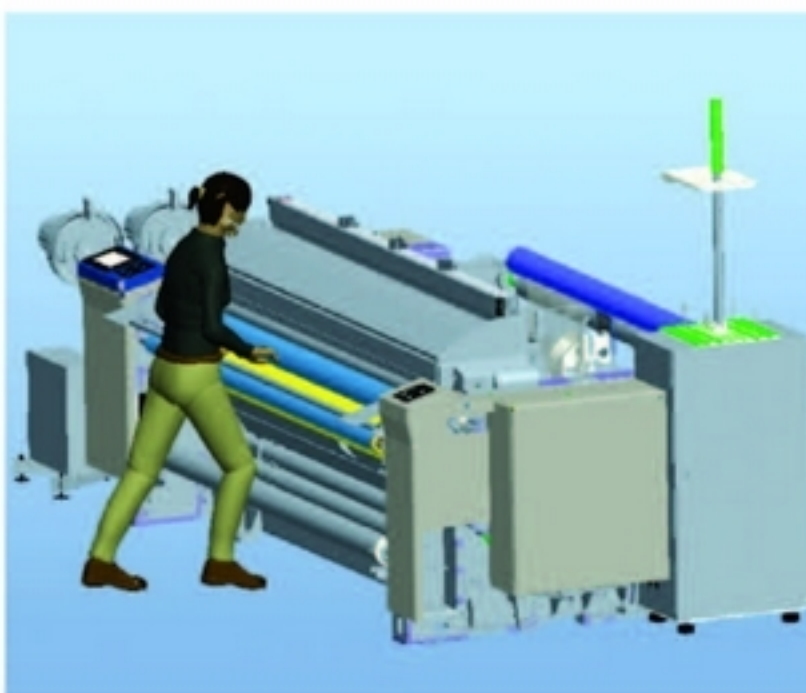


【档子调整功能】

停车档功能操作直观简便，送经和卷取可分开设置，具有常规设定、按时间补正、开车后补正三种方式。

【Function Of Mark Adjustment】

The Operation Of Stop-mark Preventing Is Simple; Let-off And Take-up Can Be Set Separately; Three Kinds Of Methods Are Available: Normal Setting, Corrections On Time And Corrections Of After-start.



【良好的操作舒适性】

设计理念以人为本，充分考虑人机工程，降低经位置线，提高操作者的舒适性，改善工作效率。此外，重心的下移亦有益于织机高速运转。

【自动对织口】

采用自动倒转对合织口，织机停车修复后，再启动时的织口自动对合，使操作更加简便，并能大幅提高工作效率。

【Perfectly Comfortable Operation】

The design of this machine is based on the idea of People Foremost. Ergonomics is fully considered, reduce the height of cloth-fell to make operators more comfortable and increase the efficiency.

【Automatic Cloth-fell Aiming】

Adopts automatic reverse to aim cloth-fell. Cloth-fell can be adjusted well automatically when the machine is restarted; this can make the operating simpler and increase the work efficiency.

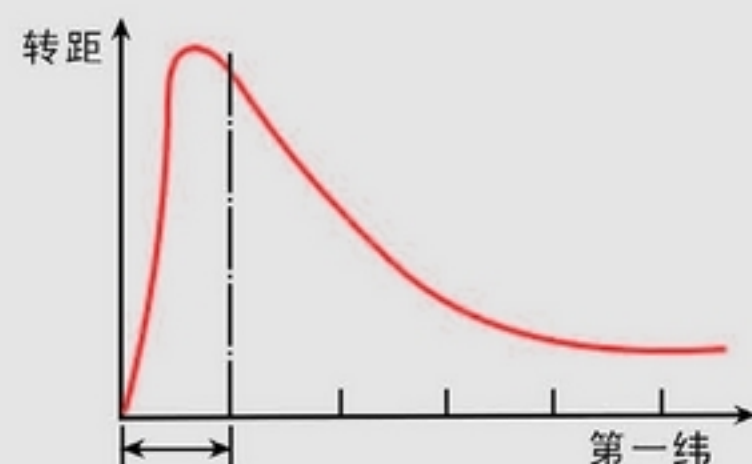


【振动式永磁电动鼓筒储纬】

新型电动鼓筒储纬器，具有出色的高速跟踪性能，配备积极纱线分离送纱装置，可实现细支纱到粗支纱简单稳定的储纬及解舒。

【Vibration Permanent Magnetism Electric Drum Accumulator】

New type electric drum accumulators are provided with perfect high speed performance of following; equipped with positive separate weft release device, can accumulate and release both fine and thick yarn easily.



【超启动马达】

采用先进的超启动马达，使织机启动时可输出高扭矩，防止停车档及第一纬纬纱的松弛。通过直接连在曲轴上的大容量电磁制动器，可以实现织机准确定位停车。

【Super Motor】

Adopts advanced super motor, this kind of motor can offer high torque when the machine is started to avoid any marks and weft loop of first pick. The machine can be braked accurately thought the electromagnetism clutch which is connected directly on crank shaft.



【WBS纬纱制动器】

大幅减少引纬结束时发生的峰值张力，实现高速状态下强捻织物起皱均匀。有效防止加工丝织造过程中产生紧纬和松纬。

【WBS Weft Braker】

WBS can much reduce the crest value of tension, this can ensure well-proportioned wrinkle of high twisting fabrics, and can prevent tight or loose weft.

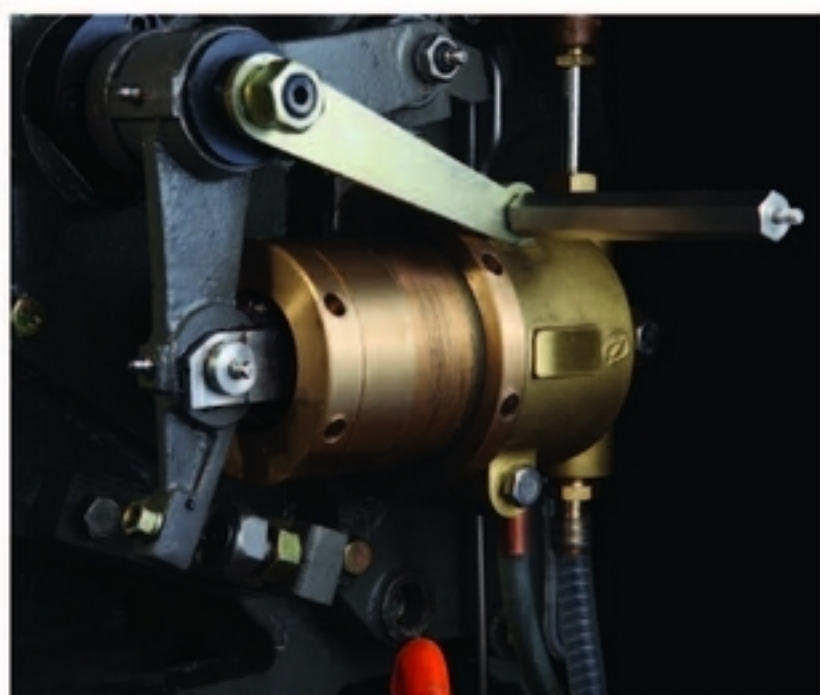


【高清彩色人机交互界面】

采用高清彩色触摸式LED背光屏作为人机交互界面，使用户轻松简便的实现织机及储纬器等工作参数的设定，以及选择特定功能，分析生产报表和检查报警信息等多种功用。并具有无线用户卡功能，赋予不同操作人员不同权限。

【Man-machine Conversation Panel】

Equipped with high clear colored touching LED screen as man-machine conversation panel, operators can set parameters of loom and accumulators easily, also can choose special functions to check production data and others.

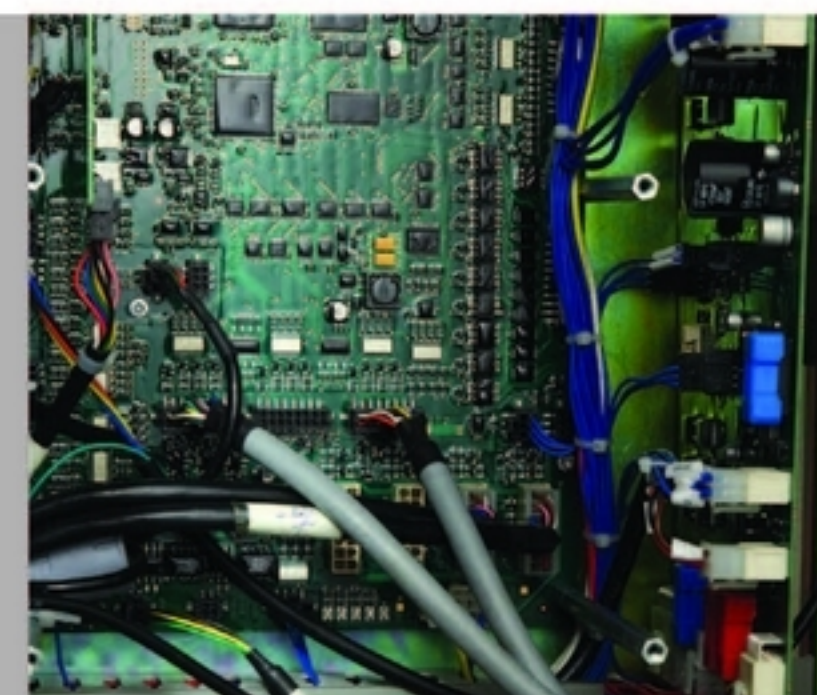


【水泵】

采用新型高性能水泵，提高喷射水的集束性，从而提升投纬能力，单泵和双泵不同配置，可适应广泛的织造品种。

【Water Pump】

Adopts new type water pump which can increase the property of water bundling. Two options of single and double pumps are able to weave different fabrics.



【新一代电控系统】

采用功能先进的电控系统，优化设计电路板，集成度高，抗干扰好，工作环境适应范围广，运行稳定可靠，保证生产安全及织物品质。

【New Type Electric System】

Adopts advanced electric controlling system, optimize the design of PCBs, high integration, anti-interference, various working environment, stable performance, can ensure a safe working and production quality.



【重视织物品质的送经系统】

经强化的双辊送经，不仅适用于轻薄到超厚重的织物，还可提升织物的织造品质。ELO电子送经系统配备反弹装置，有效防止停车档。

【Let-off Device】

Adopts strengthen double-roller let-off system, not only can weave light and heavy fabrics, but also can improve the fabric quality. Electronic let-off is equipped with rebound device to prevent stop marks.



RFJW10 型喷水织机技术规格

RFJW10 WATER JET LOOM SPECIFICATION

项目		规格	选配件
箱幅	公称箱幅	150、170、190、210、230cm	
	有效箱幅	公称箱幅- (0-50cm)	
纬纱选择		2色自由选纬	
动力	启动方式	超启动马达驱动	
	马达功率	2.7KW、3.0KW、3.7KW	
	运转操作	通过电磁制动器直接控制定位停车 按钮操作 (准备、运转、停止、正向点动、反向点动、倒转1圈后定位停车) 自动对织口	
打纬		曲柄式多箱脚打纬机构。油浴润滑方式	
引纬	泵	柱塞式弹簧加压方式	
	喷嘴	环形喷嘴稳压器方式 (陶瓷喷嘴)	
	测长储纬	振动电动鼓筒测长储纬装置 (2色)	WBS纬纱制动器 电动式纬纱拉回装置
开口		曲柄开口: 4片综框、6片综框	
		凸轮开口: 上置式积极凸轮10片综框	
		多臂开口: 上置消极16片综框、上置积极多臂16片综框	
		大提花开口	
送经		ELO电动送经、档子调整功能	
	最大张力	2500N、5000N	
	后梁	标准	
	边盘直径	800mm	914mm、1000mm
卷取		ETU电动卷取	
	布卷径	520mm	
	布卷经路	S1形、S2形	
供纱架		落地式横向4纱筒 (2色)	
布边装置		行星齿轮式	
纱端处理		锭子假捻方式	
剪纬器		机械式剪纬器	
边撑		上置式双边撑杆双环	
脱水		微缝管吸入方式 (高压鼓风机370W)	
停车装置	断纬	OPF光电式探纬器	
	显示停车原因	显示屏显示信息	
		多功能4灯式停车显示灯	
自动化	主控	自动控制、故障排除、自我诊断功能	
		运转信息的显示、维修信息的显示等	
	网络	集中联网、织机监控系统	

Item		Specifications	Options
Width	Reed width	150、170、190、210、230cm	
	Working width	Reed width - (0-50cm)	
Weft color		2 color at will	
Power	Start by	Super motor	
	Motor capacity	2.7KW、3.0KW、3.7KW	
	Working	Brake through electromagnetism clutch Buttons (prepare, start, stop, forwarder inching, reverse inching, reverse one circle) Automatic pick finding	
Beating		Crank with multi-sley, bath oil.	
Insertion	Pump	Plunger pump	
	Nozzle	Annular nozzle manostat (ceramics jet needle)	
	Accumulator	Vibration electric drum accumulator (2 color)	WBS Electric weft Drawing device
Shedding device		Crank: 4 heald frames, 6 heald frames	
		Cam: up-mounted cam, max 10 heald frames	
		Dobby: Up-mounted negative dobby Up-mounted positive dobby max 16 heald frames	
		Jacquard	
Let-off		ELO, Function of mark adjustment	
	Max Tension	2500N、5000N	
	Back-roller	Standard	
	Flange dia	800mm	914mm、1000mm
Take-up		ETU	
	Cloth dia	520mm	
	Cloth Route	Type S1, Type S2	
Cone stand		4 cone stand, 2 color	
Selvage		Planet gear	
Handling of yarn end		Spindle false twisting	
Weft cutter		Mechanical	
Temple		Up-mounted double temples shaft with double rings	
Dehydration		Tiny crevice pipe suction (high pressure blowing Machine 370W)	
Stop motion	Weft stop	OPF photoelectric sensor	
	Display of stop reasons	Screen panel	
		Multi-function 4-light indicating	
Automatic	Main control	Auto control, fault remove, itself diagnosis	
		Showing of working info and maintenance data	
	Net	Centralizing net connection, loom supervisory system	

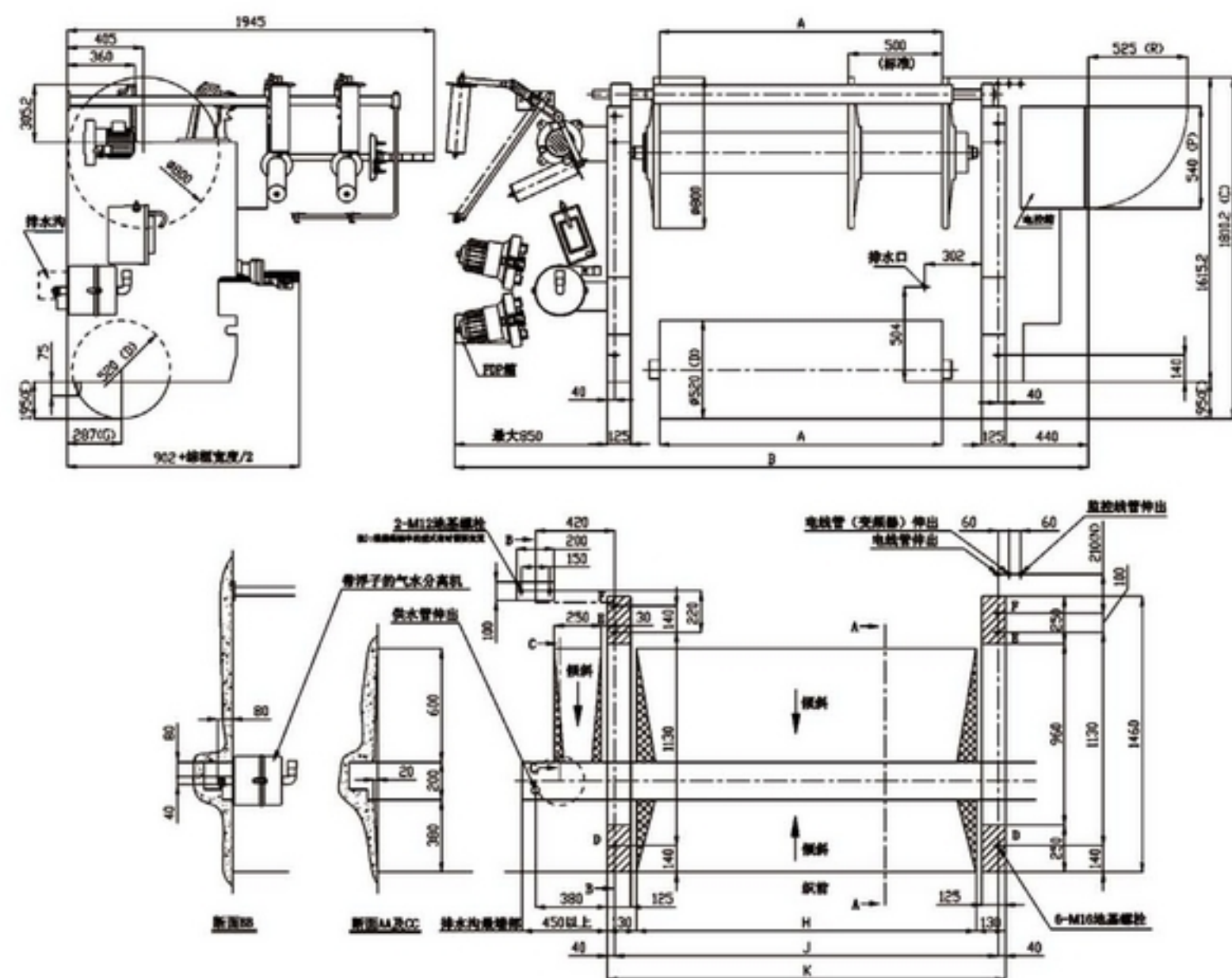


RFJW10 型喷水织机尺寸图

RFJW10 WATER JET LOOM DIMENSIONS

RFJW10平开口（边盘800）

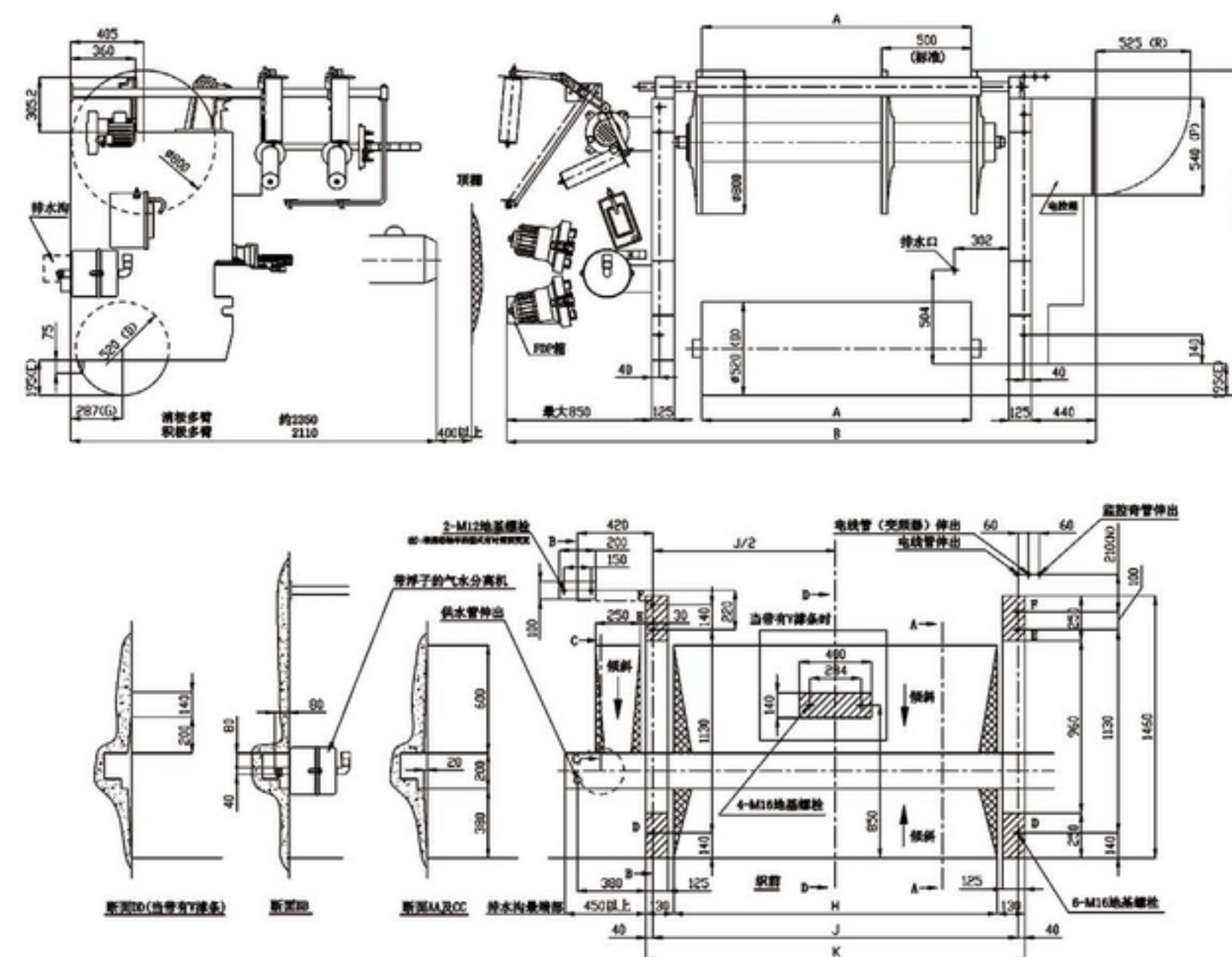
RFJW10 Plain Shedding (Flange dia 800mm)



箱幅宽	A	B	H	J	K
150cm	1500	3400	1850	2030	2110
170cm	1700	3600	2050	2230	2310
190cm	1900	3800	2250	2430	2510
210cm	2100	4000	2450	2630	2710
230cm	2300	4200	2650	2830	2910

RFJW10凸轮、多臂开口（边盘800）

RFJW10 Cam, dobby shedding (flange dia 800mm)



箱幅宽	A	B	H	J	K
150cm	1500	3400	1850	2030	2110
170cm	1700	3600	2050	2230	2310
190cm	1900	3800	2250	2430	2510
210cm	2100	4000	2450	2630	2710
230cm	2300	4200	2650	2830	2910



全方位服务
SERVICE



山东日发纺机秉承“成功源自顾客满意的产品和服务”的理念和“为顾客提供全方位服务”的宗旨，为顾客提供完善的售前、售中和售后服务。

【咨询服务】为客户提供技术交流和产品咨询服务，提供性价比最优的产品配置方案，协助规划出最适合的车间布局草图。

"Succeed comes from products and service which customers satisfied" and "Supply excellence services for customers" are our belief and aim. We prepare to provide perfect per-marketing, service on sale, after sale services.

【Pre-marking services】

Communication and products counseling, help for matched groups with the best ratio of performance to price, assist the customer to plan the most suitable layout drawings.



【人员培训】资深技术人员提供设备的安装调试服务，同时为客户进行设备使用和保养的培训，确保织机在最佳状态下运行，为用户创造最大效益。

【技术支持】及时全面。根据需要参与织机初期的织造试验，协助客户分析具体的织物特性、确定满足质量和产量要求的最恰当的织机参数和配置、协助制定最适当的工艺方案。

【Technician training】

Senior engineers provide the machine installation, and meantime, and supply training how to operate and maintain machines to ensure the looms working perfect.

【Technical support】

Technical support are comprehensive and in time. Our engineer can participate in the start weaving test if necessary, assist the customer to analyse the fabrics to set the best parameters and finalize the technical programme.



【售后服务】强大的销售服务网络可在24小时内及时做出反应，并利用尽可能快捷的交通工具抵达客户所在地，迅速可靠地提供备/配件，以缩短用户的等待时间，最大限度地保障用户利益。

【After-sale service】

We have large sale-service-net, and we can make response within 24 hours, and try to get to the customers location by quickest vehicle to shorten machines' downtime.



Choiceness/High ratio of performance to price +
Perfect after-sale Service =Absolute Market Share.

优良/高性价比的产品+完善的售后服务=绝对的市场占有率