



SPECIFICATIONS:

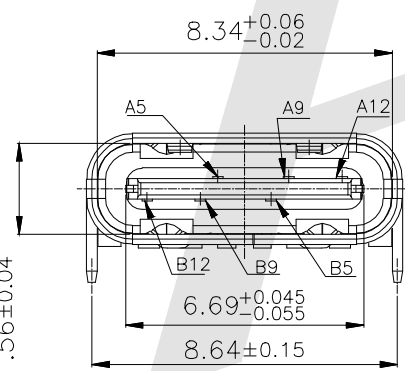
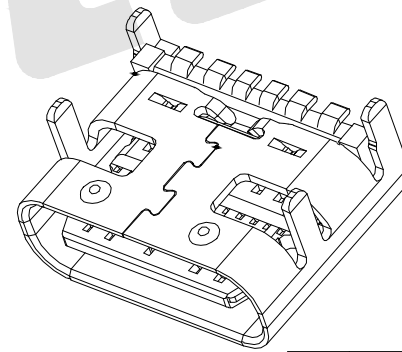
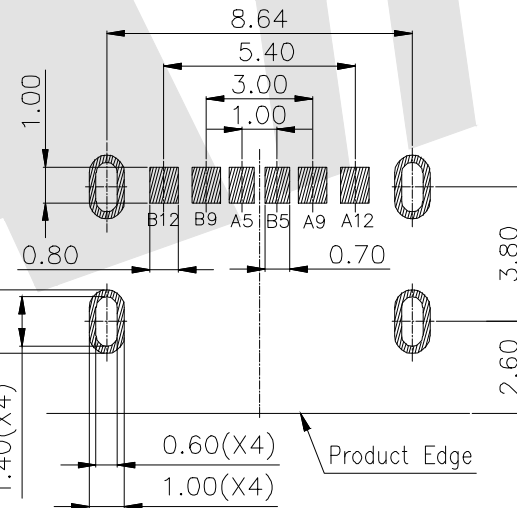
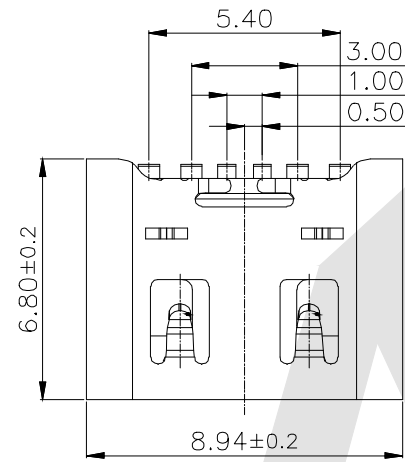
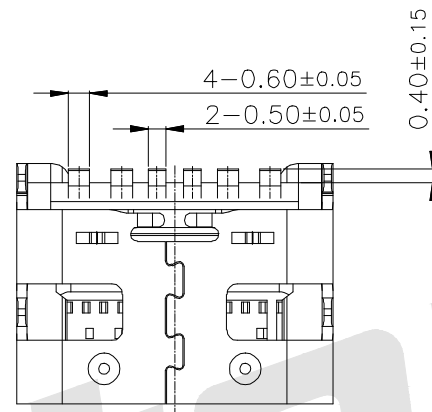
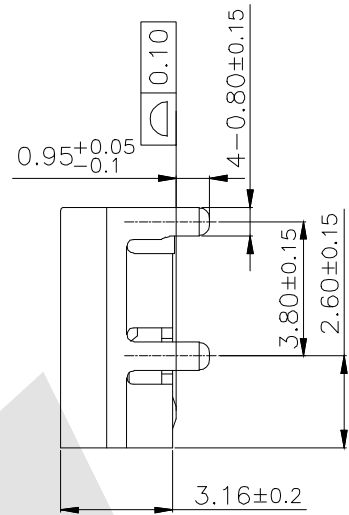
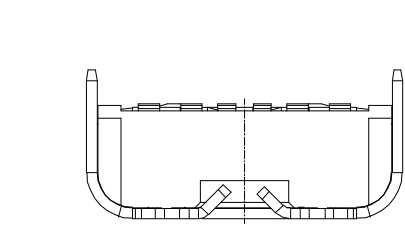
1. MATERIAL
INSULATOR: THERMOPLASTIC, Black UL94V-0
CONTACT: COPPER ALLOY
SHELL: COPPER ALLOY
2. CONTACT PLATING
UNDERPLATE: 40u"-80u" Nickel
CONTACT AREA: 30u" Pd-Ni+2u", Selective Gold,
SOLDER TAIS AREA: 100u"-200u" Tin (Lead Free)
3. ELECTRICAL:
CURRENT RATING: 3A MAX
OPERATION VOLTAGE: 20V
WITHSTANDING VOLTAGE: 100V AC/MIN
INSULATION RESISTANCE: 100M Ω MIN@100VDC
4. Mechanical:
Mating Force: 5-20Nf MAX
UnMating Force: 6-20Nf Min
Durability: 10000 Cycles
5. ENMPONENTAL
TEMPERATURE RANGE -40° C~+85° C
Wetting Temperature: 265±5° C 5±0.5S

Ordering Code:

U3.1FM10 - B - L - X - X - X - X

① ② ③ ④ ⑤ ⑥ ⑦

- | | |
|-----------------------|-------------------|
| ① Series No: | ⑤ Contact Plating |
| ② Shell Material: | G0: Gold flash |
| B: Brass | G1: 3u" Gold |
| ③ Insulator Material: | G2: 5u" Gold |
| L: LCP | G3: 10u" Gold |
| ④ Contact Material: | G4: 15u" Gold |
| B: Brass | G5: 30u" Gold |
| P: Phosphor Copper | ⑥ Packing |
| | A: Tray |
| | B: Bag |
| | C: Tube |
| | D: Tape & Reel |
| | ⑦ PCB Dip Length |
| | A: 1.5mm B: 1.9mm |



Recommend PCB Layout
(Tol: ±0.05, T=1.0±0.05mm)

A5	CC1	B5	CC2
A9	VBUS	B9	VBUS
A12	GND	B12	GND
PIN	SIGNAL NAME	PIN	SIGNAL NAME

Unless Otherwise specified tolerance
X. ±0.35 X.XX: ±0.20
X.X: ±0.25 X.XXX: ±0.15

SCALE: As Shown	UNIT: mm
DRAW Wu Feng Rong	DATE 09/16/2021
CHECK BobYang	DATE 09/16/2021

Antenk ANTENK ELECTRONICS CO., LTD
Http://www.antenk.com
E-mail:sales@antenk.com

TITLE:
USB 3.1 C TYPE TPC6P SMT L6.8 Receptacle



DRAWING NO: U3.1FM10-BLXXXX
PRODUCT NO: U3.1FM10-BLXXXX

REV	DESCRIPTION	DATE