

## SPECIFICATIONS:

- Voltage rating: 150V AC/DC
- Current rating: 1A AC/DC
- Withstanding Voltage: 500V AC/minute
- Insulation resistance: 500MΩ Min.
- Temperature range: -40°C To +105°C
- Contact resistance: 20mΩ Max.

## Standards

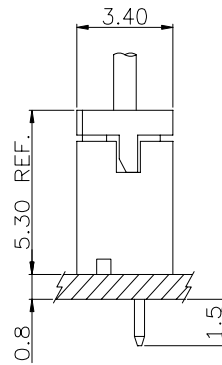
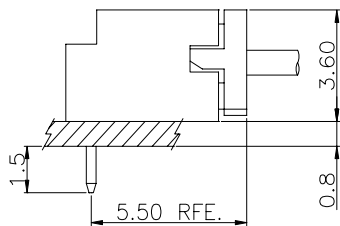
HSF



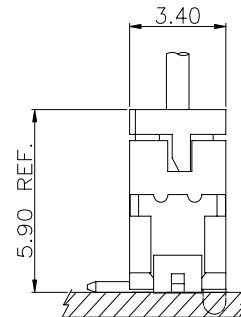
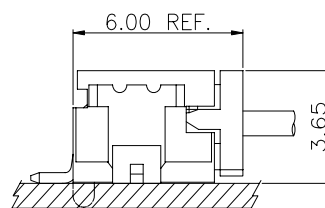
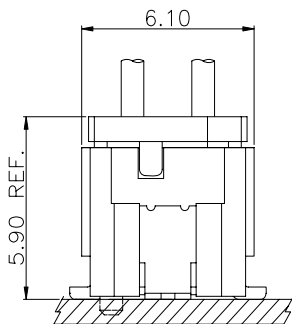
RoHS

Wire to Board

## Assembly Layout



DIP TYPE

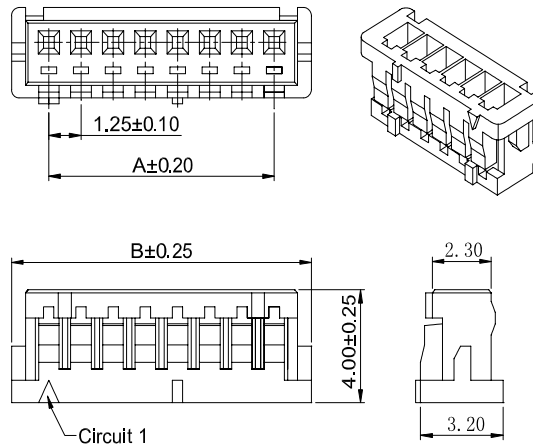


SMT TYPE

## 1.25mm Pitch single row housing connector

### HOUSING

- Part NO.:AH1252-xP
- Suitable:AT1252T-xP series Terminal
- Mates with:AW1252 series Single Row Wafer
- Material:Nylon 66,UL94V-0
- Color:Gray



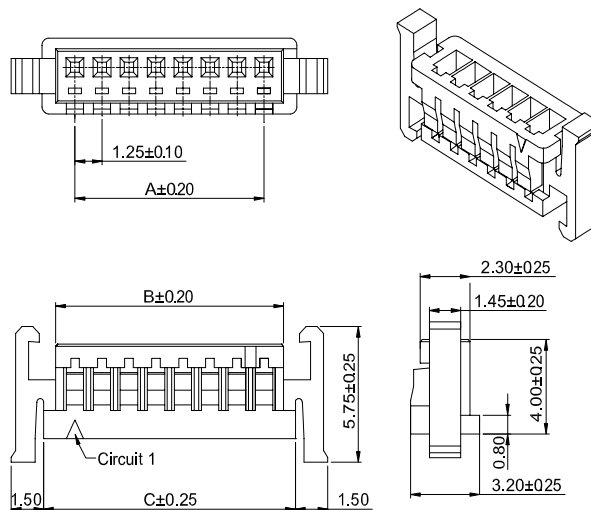
### Ordering Information & Dimensions:

Poles	Part No.	Dimensions(mm)	
		A	B
02	AH1252-02P	1.25	4.15
03	AH1252-03P	2.50	5.40
04	AH1252-04P	3.75	6.65
05	AH1252-05P	5.00	7.90
06	AH1252-06P	6.25	9.15
07	AH1252-07P	7.50	10.40
08	AH1252-08P	8.75	11.65
09	AH1252-09P	10.00	12.90
10	AH1252-10P	11.25	14.15
11	AH1252-11P	12.50	15.40
12	AH1252-12P	13.75	16.65
13	AH1252-13P	15.00	17.90
14	AH1252-14P	16.25	19.15
15	AH1252-15P	17.50	20.40

## 1.25mm Pitch single row housing connector

### HOUSING

- Part NO.:AH1252A-xP
- Suitable:AT1252T series Terminal
- Material:Nylon 66,UL94V-0
- Color:White



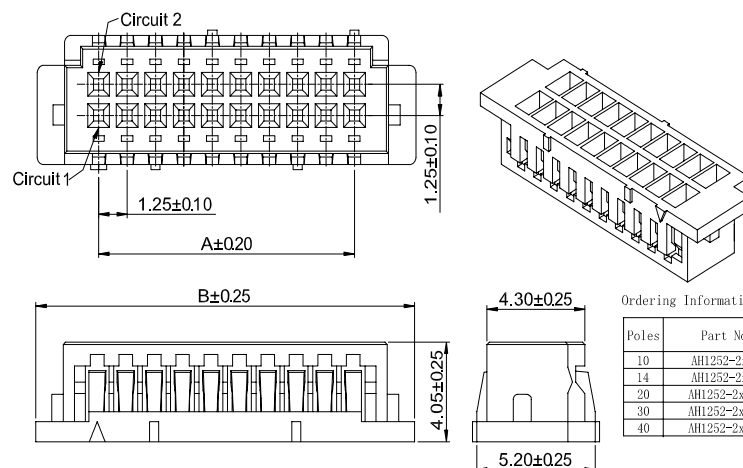
### Ordering Information & Dimensions:

Poles	Part No.	Dimensions(mm)		
		A	B	C
02	AH1252A-02P	1.25	2.90	4.15
03	AH1252A-03P	2.50	4.15	5.40
04	AH1252A-04P	3.75	5.40	6.65
05	AH1252A-05P	5.00	6.65	7.90
06	AH1252A-06P	6.25	7.90	9.15
07	AH1252A-07P	7.50	9.15	10.40
08	AH1252A-08P	8.75	10.40	11.65
09	AH1252A-09P	10.00	11.65	12.90
10	AH1252A-10P	11.25	12.90	14.15
11	AH1252A-11P	12.50	14.15	15.40
12	AH1252A-12P	13.75	15.40	16.65
13	AH1252A-13P	15.00	16.65	17.90
14	AH1252A-14P	16.25	17.90	19.15
15	AH1252A-15P	17.50	19.15	20.40

## 1.25mm Pitch dual row housing connector

### HOUSING

- Part NO.:AH1252-2xNP
- Suitable:AT1252T series Terminal
- Mates with:AW1252V-S-F-2xNP series Dual Row Wafer
- Material:Nylon 66,UL94V-0
- Color:Gray



### Ordering Information & Dimensions:

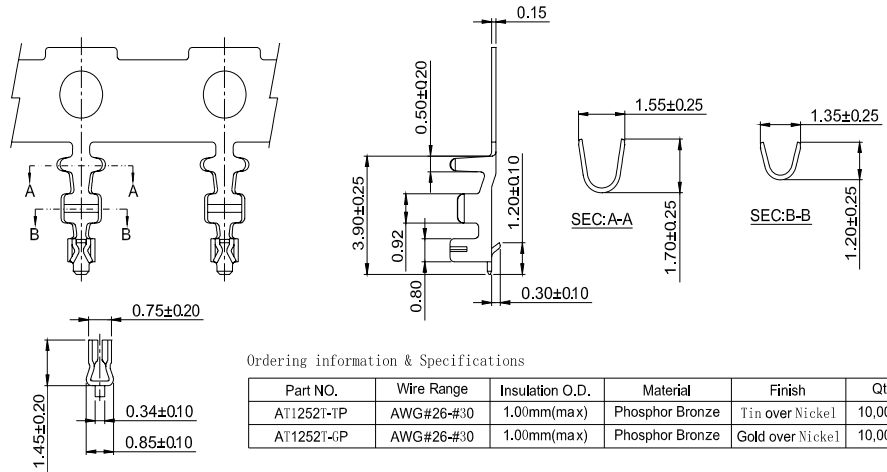
Poles	Part No.	Dimensions(mm)	
		A	B
10	AH1252-2x5P	5.00	10.40
14	AH1252-2x7P	7.50	12.90
20	AH1252-2x10P	11.25	16.65
30	AH1252-2x15P	17.50	22.90
40	AH1252-2x20P	23.75	29.15

Connectors Expert Around You

## 1.25mm Pitch crimp terminal connector

### TERMINAL

- Part NO:AT1252T-xP
- Applicable wire:AWG#26-#30
- Material:Phosphor Bronze
- Finish:Tin Plated or Gold
- Used in AH1252 series Housing



### Ordering information & Specifications

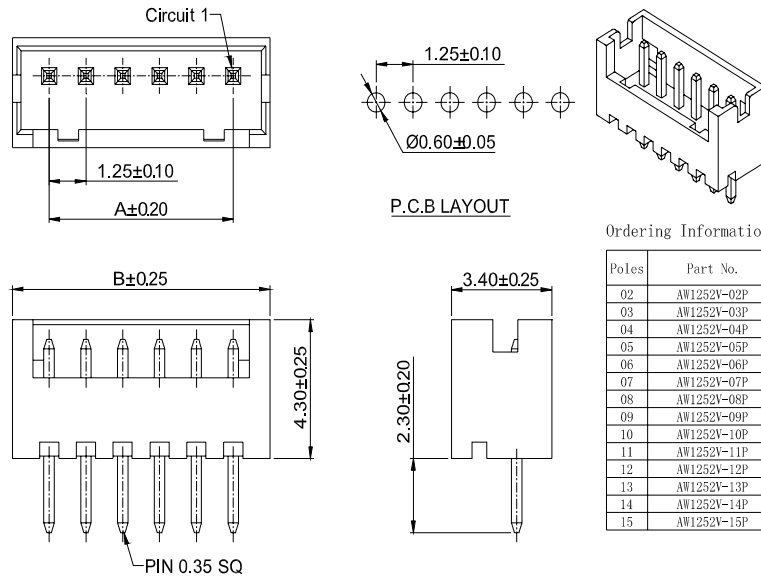
Part NO.	Wire Range	Insulation O.D.	Material	Finish	Qty/reel
AT1252T-TP	AWG#26-#30	1.00mm(max)	Phosphor Bronze	Tin over Nickel	10,000 PCS
AT1252T-GP	AWG#26-#30	1.00mm(max)	Phosphor Bronze	Gold over Nickel	10,000 PCS

Wire to Board

## 1.25mm Pitch 180° single row wafer connector

### WAFER

- Part NO:AW1252V-xP
- Material:Pin:Brass/Tin over Nickel
- Insulator:Nylon 66, UL94V-0
- Mates with:AH1252 series Single Row Housing
- Color: Gray



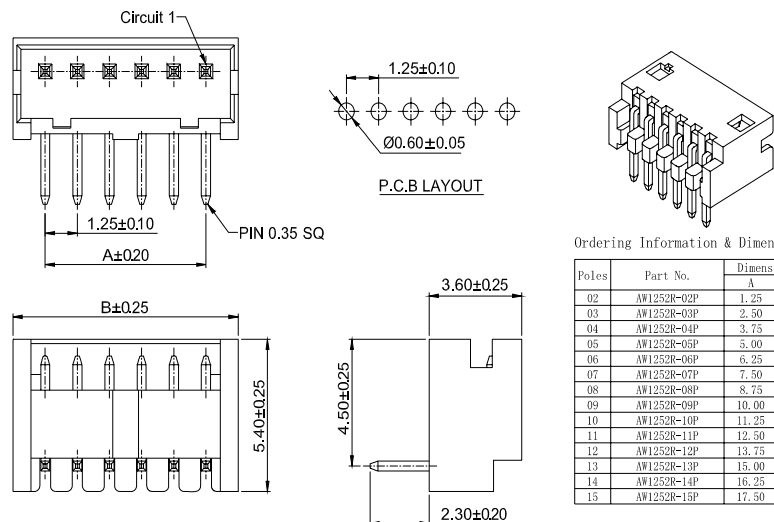
### Ordering Information & Dimensions:

Poles	Part No.	Dimensions(mm)	
		A	B
02	AW1252V-02P	1.25	3.75
03	AW1252V-03P	2.50	5.00
04	AW1252V-04P	3.75	6.25
05	AW1252V-05P	5.00	7.50
06	AW1252V-06P	6.25	8.75
07	AW1252V-07P	7.50	10.00
08	AW1252V-08P	8.75	11.25
09	AW1252V-09P	10.00	12.50
10	AW1252V-10P	11.25	13.75
11	AW1252V-11P	12.50	15.00
12	AW1252V-12P	13.75	16.25
13	AW1252V-13P	15.00	17.50
14	AW1252V-14P	16.25	18.75
15	AW1252V-15P	17.50	20.00

## 1.25mm Pitch 90° single row wafer connector

### WAFER

- Part NO:AW1252R-xP
- Material:Pin:Brass/Tin over Nickel
- Insulator:Nylon 66, UL94V-0
- Mates with:AH1252 series Single Row Housing
- Color: Gray



### Ordering Information & Dimensions:

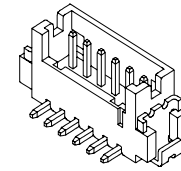
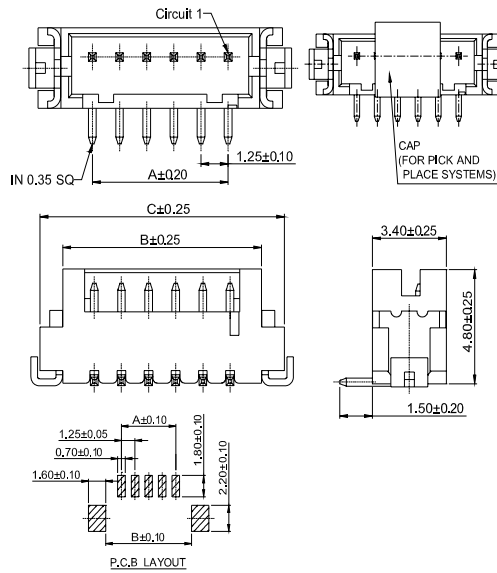
Poles	Part No.	Dimensions(mm)	
		A	B
02	AW1252R-02P	1.25	3.75
03	AW1252R-03P	2.50	5.00
04	AW1252R-04P	3.75	6.25
05	AW1252R-05P	5.00	7.50
06	AW1252R-06P	6.25	8.75
07	AW1252R-07P	7.50	10.00
08	AW1252R-08P	8.75	11.25
09	AW1252R-09P	10.00	12.50
10	AW1252R-10P	11.25	13.75
11	AW1252R-11P	12.50	15.00
12	AW1252R-12P	13.75	16.25
13	AW1252R-13P	15.00	17.50
14	AW1252R-14P	16.25	18.75
15	AW1252R-15P	17.50	20.00

## Connectors Expert Around You

### 1.25mm Pitch 180° smt single row wafer connector

#### WAFER

- Part NO:AW1252V-S-xP
- Material:Pin:Brass/Tin over Nickel
- Insulator:Nylon 6T, UL94V-0
- Cap:Nylon 6T, UL94V-0
- Mates with:AH1252 series Single Row Housing
- Color: Ivory



Ordering Information & Dimensions:

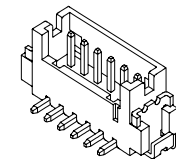
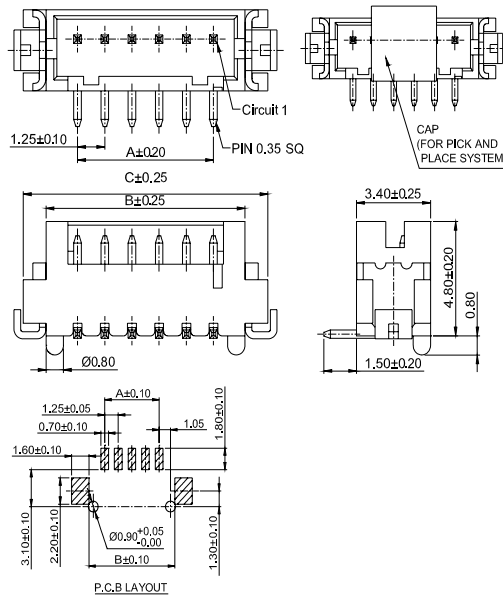
Poles	Part No.	Dimensions(mm)		
		A	B	C
02	AW1252V-S-02P	1.25	4.15	6.25
03	AW1252V-S-03P	2.50	5.40	7.50
04	AW1252V-S-04P	3.75	6.65	8.75
05	AW1252V-S-05P	5.00	7.90	10.00
06	AW1252V-S-06P	6.25	9.15	11.25
07	AW1252V-S-07P	7.50	10.40	12.50
08	AW1252V-S-08P	8.75	11.65	13.75
09	AW1252V-S-09P	10.00	12.90	15.00
10	AW1252V-S-10P	11.25	14.15	16.25
11	AW1252V-S-11P	12.50	15.40	17.50
12	AW1252V-S-12P	13.75	16.65	18.75
13	AW1252V-S-13P	15.00	17.90	20.00
14	AW1252V-S-14P	16.25	19.15	21.25
15	AW1252V-S-15P	17.50	20.40	22.50

Wire to Board

### 1.25mm Pitch 180° smt single row wafer connector

#### WAFER

- Part NO:AW1252V-S-F-xP
- Material:Pin:Brass/Tin over Nickel
- Solder Tabs:Phosphor Bronze/Tin over Nickel
- Insulator:Nylon 6T, UL94V-0
- Cap: Nylon 6T, UL94V-0
- Mates with:AH1252 series Single Row Housing
- Color: Ivory



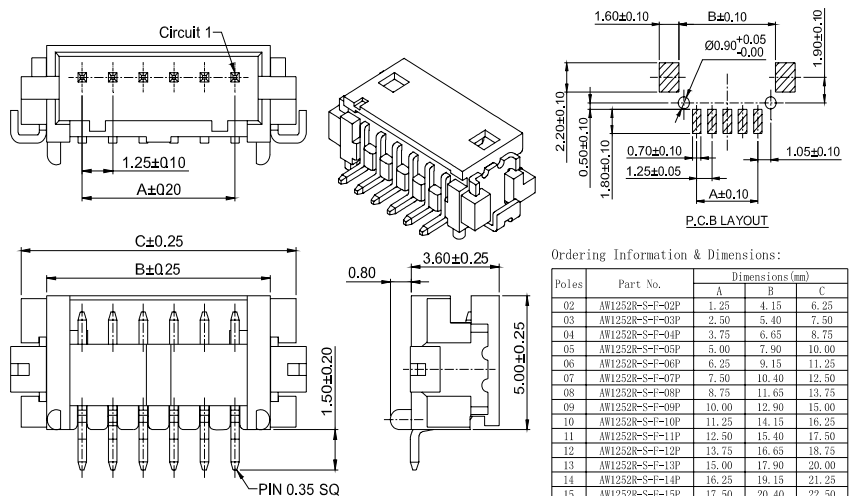
Ordering Information & Dimensions:

Poles	Part No.	Dimensions(mm)		
		A	B	C
02	AW1252V-S-F-02P	1.25	4.15	6.25
03	AW1252V-S-F-03P	2.50	5.40	7.50
04	AW1252V-S-F-04P	3.75	6.65	8.75
05	AW1252V-S-F-05P	5.00	7.90	10.00
06	AW1252V-S-F-06P	6.25	9.15	11.25
07	AW1252V-S-F-07P	7.50	10.40	12.50
08	AW1252V-S-F-08P	8.75	11.65	13.75
09	AW1252V-S-F-09P	10.00	12.90	15.00
10	AW1252V-S-F-10P	11.25	14.15	16.25
11	AW1252V-S-F-11P	12.50	15.40	17.50
12	AW1252V-S-F-12P	13.75	16.65	18.75
13	AW1252V-S-F-13P	15.00	17.90	20.00
14	AW1252V-S-F-14P	16.25	19.15	21.25
15	AW1252V-S-F-15P	17.50	20.40	22.50

### 1.25mm Pitch 90° smt single row wafer connector

#### WAFER

- Part NO:AW1252R-S-F-xP
- Material:Pin:Brass/Tin over Nickel
- Solder Tabs:Phosphor Bronze/Tin over Nickel
- Insulator:Nylon 6T, UL94V-0
- Mates with:AH1252 series Single Row Housing
- Color: Ivory



Ordering Information & Dimensions:

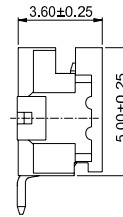
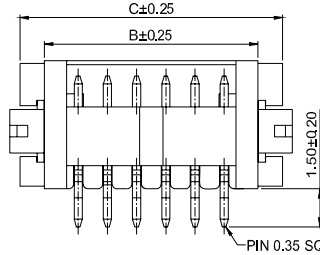
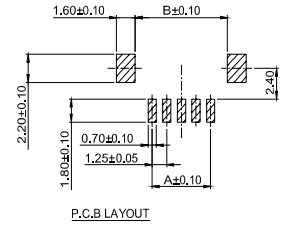
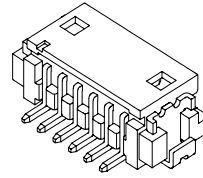
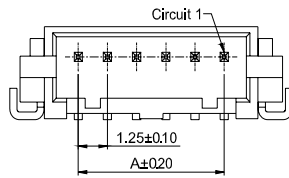
Poles	Part No.	Dimensions(mm)		
		A	B	C
02	AW1252R-S-F-02P	1.25	4.15	6.25
03	AW1252R-S-F-03P	2.50	5.40	7.50
04	AW1252R-S-F-04P	3.75	6.65	8.75
05	AW1252R-S-F-05P	5.00	7.90	10.00
06	AW1252R-S-F-06P	6.25	9.15	11.25
07	AW1252R-S-F-07P	7.50	10.40	12.50
08	AW1252R-S-F-08P	8.75	11.65	13.75
09	AW1252R-S-F-09P	10.00	12.90	15.00
10	AW1252R-S-F-10P	11.25	14.15	16.25
11	AW1252R-S-F-11P	12.50	15.40	17.50
12	AW1252R-S-F-12P	13.75	16.65	18.75
13	AW1252R-S-F-13P	15.00	17.90	20.00
14	AW1252R-S-F-14P	16.25	19.15	21.25
15	AW1252R-S-F-15P	17.50	20.40	22.50

Connectors Expert Around You

## 1.25mm Pitch 90° smt single row wafer connector

WAFER

- Part NO:AW1252R-S-xP
- Material:Pin:Brass/Tin over Ni
- Solder Tabs:Phosphor Bronze/Tin over Ni
- Insulator:Nylon 6T, UL94V-0
- Mates with:AH1252 series Single Row Housing
- Color: Ivory



Ordering Information & Dimensions:

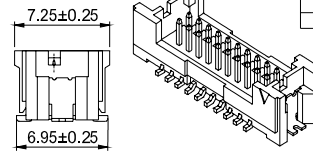
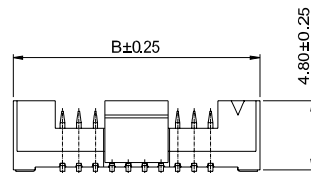
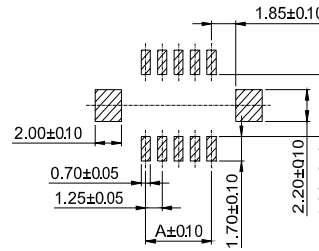
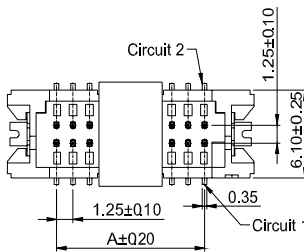
Poles	Part No.	Dimensions (mm)		
		A	B	C
02	AW1252R-S-02P	1.25	4.15	6.25
03	AW1252R-S-03P	2.50	5.40	7.50
04	AW1252R-S-04P	3.75	6.65	8.75
05	AW1252R-S-05P	5.00	7.90	10.00
06	AW1252R-S-06P	6.25	9.15	11.25
07	AW1252R-S-07P	7.50	10.40	12.50
08	AW1252R-S-08P	8.75	11.65	13.75
09	AW1252R-S-09P	10.00	12.90	15.00
10	AW1252R-S-10P	11.25	14.15	16.25
11	AW1252R-S-11P	12.50	15.40	17.50
12	AW1252R-S-12P	13.75	16.65	18.75
13	AW1252R-S-13P	15.00	17.90	20.00
14	AW1252R-S-14P	16.25	19.15	21.25
15	AW1252R-S-15P	17.50	20.40	22.50

Wire to Board

## 1.25mm Pitch 180° smt dual row wafer connector

WAFER

- Part NO:AW1252V-S-2xNP
- Material:Pin:Brass/Tin over Ni
- Solder Tabs:Phosphor Bronze/Tin over Ni
- Insulator:Nylon 6T, UL94V-0
- Cap: Nylon 6T, UL94V-0
- Mates with:AH1252 series Dual Row Housing
- Color: Ivory



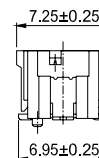
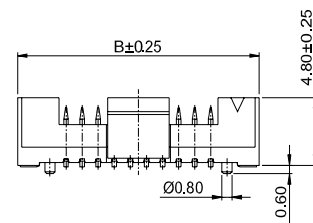
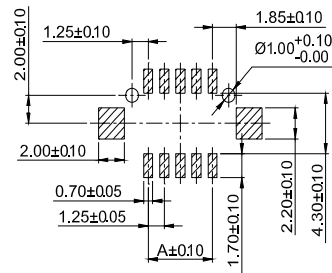
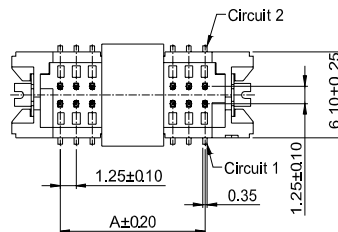
Ordering Information & Dimensions:

Poles	Part No.	Dimensions (mm)	
		A	B
10	AW1252V-S-2x5P	5.00	12.50
14	AW1252V-S-2x7P	7.50	15.00
20	AW1252V-S-2x10P	11.25	18.75
30	AW1252V-S-2x15P	17.50	25.00
40	AW1252V-S-2x20P	23.75	31.25

## 1.25mm Pitch 180° smt dual row wafer connector

WAFER

- Part NO:AW1252V-S-F-2xNP
- Material:Pin:Brass/Tin over Ni
- Solder Tabs:Phosphor Bronze/Tin over Ni
- Insulator:Nylon 6T, UL94V-0
- Cap: Nylon 6T, UL94V-0
- Mates with:AH1252 series Dual Row Housing
- Color: Ivory



Ordering Information & Dimensions:

Poles	Part No.	Dimensions (mm)	
		A	B
10	AW1252V-S-F-2x5P	5.00	12.50
14	AW1252V-S-F-2x7P	7.50	15.00
20	AW1252V-S-F-2x10P	11.25	18.75
30	AW1252V-S-F-2x15P	17.50	25.00
40	AW1252V-S-F-2x20P	23.75	31.25