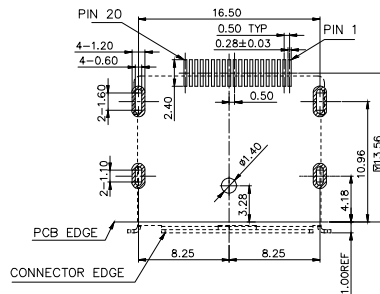
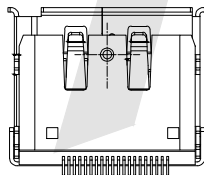
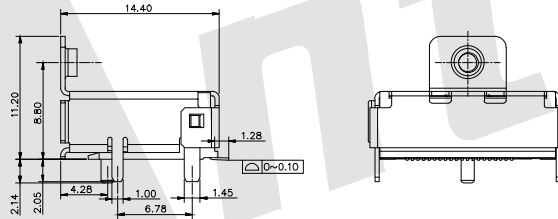
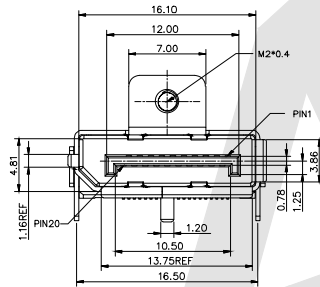
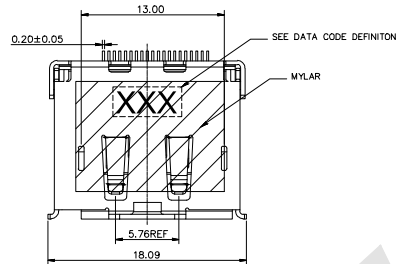
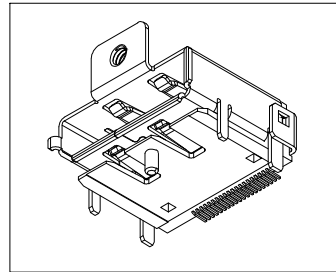


HSF



RECOMMENDED PCB LAYOUT(PCB THICKNESS: 1.6mm)
COMPONENT SIDE VIEW(TOLERANCE: ±0.05)

1. MATERIAL:
 - 1.1 INSULATOR: LCP, UL94 V-0.
INSULATOR COLOR: BLACK.
 - 1.2 TERMINAL: PHOSPHOR BRONZE.
 - 1.3 SHELL: COPPER ALLOY.
2. PLATING:
 - 2.1 CONTACT: SELECTIVE GOLD(SEE ORDER INFORMATION) PLATED IN CONTACT AREA, 100u" Min. MATTED TIN PLATED IN SOLDER AREA, 50u" Min. NICKEL UNDERPLATED OVERALL.
 - 2.2 SHELL: 30u" Min. NICKEL PLATED OVERALL.
3. NOTES:
 - 3.1 RESISTANCE TO SOLDERING HEAT: 265°C FOR 10 SECONDS.
 - 3.2 THIS COMPONENT AND ITS HOMOGENEOUS SUBCOMPONENTS ARE ROHS & HALOGEN-FREE COMPLIANT.
4. SPECIFICATIONS:
 - 4.1 CURRENT RATING: 0.5A MIN.
 - 4.2 CONTACT RESISTANCE: 50mΩ MAX.
 - 4.3 INSULATION RESISTANCE: 100MΩ MIN. AT DC 500V.
 - 4.4 WITHSTANDING VOLTAGE: AC 500V R.M.S.
 - 4.5 OPERATING TEMPERATURE: -25°C ~ +85°C
 - 4.6 DURABILITY: 10000 CYCLES.
5. ORDER INFORMATION:

Ordering Code:

DP - F - X - X - 01
① ② ③ ④ ⑤

- ① Series No:
- ② Male / female:
F: female
- ③ Contact Plating:
 - 1: Selective 1u"
 - 2: Selective 3u"
 - 3: Selective 5u"
 - 4: Selective 15u"
 - 5: Selective 30u"
 - 6: All Gold
- ④ Shell Plating:
 - 1:Nickkl Platk
 - 2:Tin-Lkad Plated
 - 3:Gold Platkd
- ⑤ Series Number: 01

Unless Otherwise specified tolerance
X. ±0.35 X.XX: ±0.20
Mo X: ±0.25 X.XXX: ±0.15

Antenk ANTENK ELECTRONICS CO., LTD
Http://www.antenk.com
E-mail:sales@antenk.com

SCALE: As Shown UNIT: mm
DRAW: Mo Guo Xuan DATE: 29/10/2018
CHECK: BobYang DATE: 29/10/2018

TITLE: DISPLAY PORT A TYPE 20P R/A SMT REC
H=8.8mm WITH TOP SCREW TAB



DRAWING NO: DP-FXX01
PRODUCT NO: DP-FXX01

REV	DESCRIPTION	DATE
1		
2		
3		
4		
5		