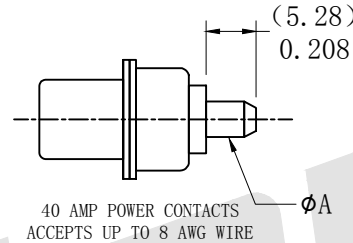
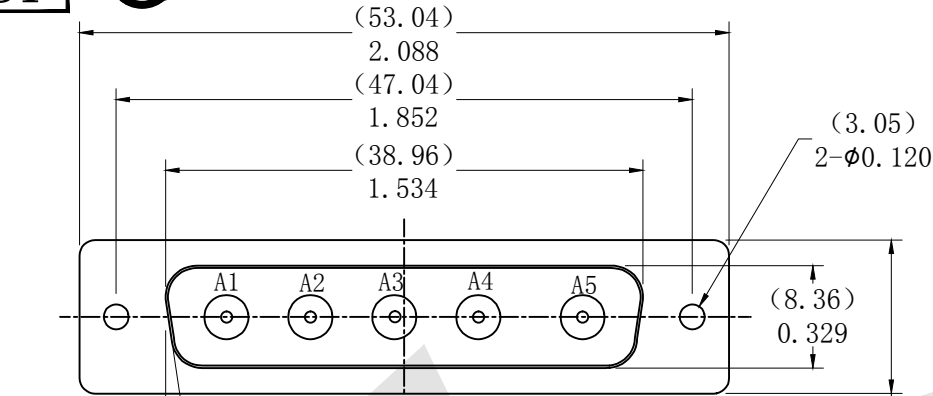
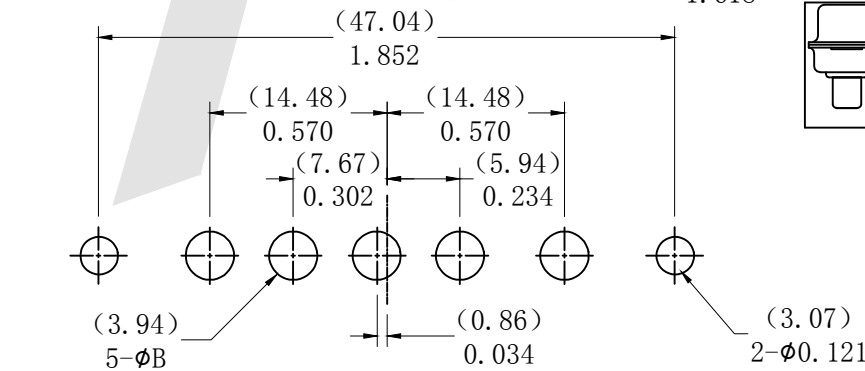
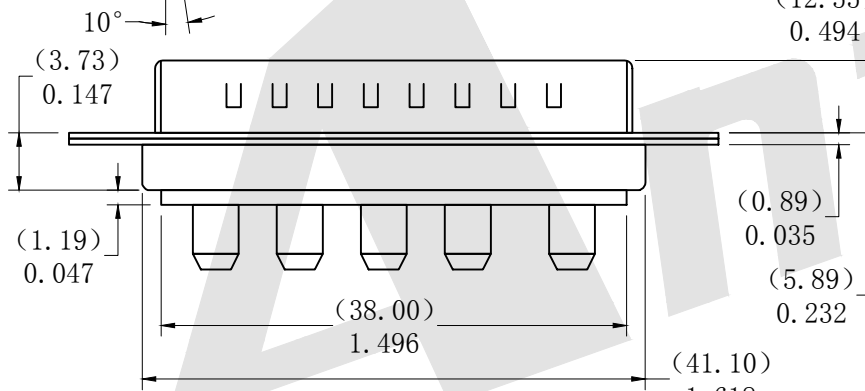


HSF

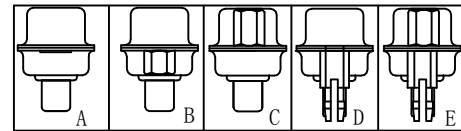


40 AMP POWER CONTACTS ACCEPTS UP TO 8 AWG WIRE

40 AMPS	Ø3.75	Ø4.0
30 AMPS	Ø3.2	Ø3.5
20 AMPS	Ø2.8	Ø3.0
10 AMPS	Ø1.7	Ø2.0
Current Rating	ØA	PCB(ØB)
	Dimension	



PECOMMENDED PCB LAYOUT



NOTE: POWER CONTACTS COME PRE-LOADED INTO INSULATORS

SPECIFICATIONS:

ELECTRICAL:
 INSULATOR RESISTANCE: 5,000 MegOHMS Min.
 DIELECTRIC WITHSTANDING: 1,000 VAC r.m.s.
 OPERATING TEMPERATURE: -55°C ~ +125°C
 CONTACT RESISTANCE: 30 MILLIOHMS Max.
 POWER PINS: SEE PART No. BELOW

MECHANICAL:
 CONTACT INSERTION FORCE: 4.5kg Max
 CONTACT SEPARATOR FORCE: 0.3kg Min

MATERIALS:
 CONTACTS: BRASS
 INSULATOR: PBT UL94V-0 RATED, 230°C PROCESS TEMP.

SHELL: STEEL
 FINISH:
 SHELL: NICKEL

Ordering Code:

PDP5W5 -M -A -G0 -B -20
 ① ② ③ ④ ⑤ ⑥

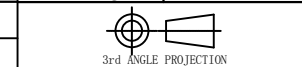
- ① Series
- ② Contact Type: M:Male F:Female
- ③ Mounting Option: A: No accessories B: Rear Rivet C: Front Rivet D: Groudstand-off on rear shell E: Front rivet+Groundstand-off on rear shell
- ④ Contact NO. : G0: Gold flash G1: 3u" Gold G2: 5u" Gold G3: 10u" Gold G4: 15u" Gold G5: 30u" Gold
- ⑤ Insulation Color Code: B:Black L:Blue W:White
- ⑥ Power AMP: 10 = 10AMPS; 20 = 20AMPS; 30 = 30AMPS; 40 = 40AMPS;

Unless Otherwise specified tolerance	
X. ±0.35	X.XX: ±0.20
X.X: ±0.25	X.XXX: ±0.15

Antenk ANTENK ELECTRONICS CO.,LTD
 Http://www.antenk.com
 E-mail:sales@antenk.com

SCALE: As Shown	UNIT: mm
DRAW Lv Xun Hua	DATE 05/05/2019
CHECK BobYang	DATE 05/05/2019

TITLE: POWER D-SUB 5W5 DIP STRAIGHT-MALE TYPE



DRAWING NO: PDP5W5-MXXXX
 PRODUCT NO: PDP5W5-MXXXX

REV	DESCRIPTION	DATE