



SPECIFICATION

MATERIAL

Insulator: Thermal Plastic, Rated UL94V-0

Contacts: Copper Alloy

Shell: Copper Alloy

CONTACT PLATING

Underplate: 50u"~100u" Nickel

Contact area: 15u"~30u" Selective Gold

Solder tails area: 100u"~200u" Tin(Lead Free)

ELECTRICAL

Operation voltage: 40V

Current rating: 0.5A min.

Contact resistance: 30mohms

Insulation resistance: 100Mohms

Dielectric withstanding voltage: 500V AC/Minute

Temperature range: -20° C to +85° C

Mating cycles: 10,000 insertions

ordering Code:

DP	-	F	-	X	-	X	-	10
①		②		③		④		⑤

① Series No:

② Male / female:

F: female

③ Contact Plating:

1: Selective 1u"

2: Selective 3u"

3: Selective 5u"

4: Selective 15u"

5: Selective 30u"

6: All Gold

④ Shell Plating:

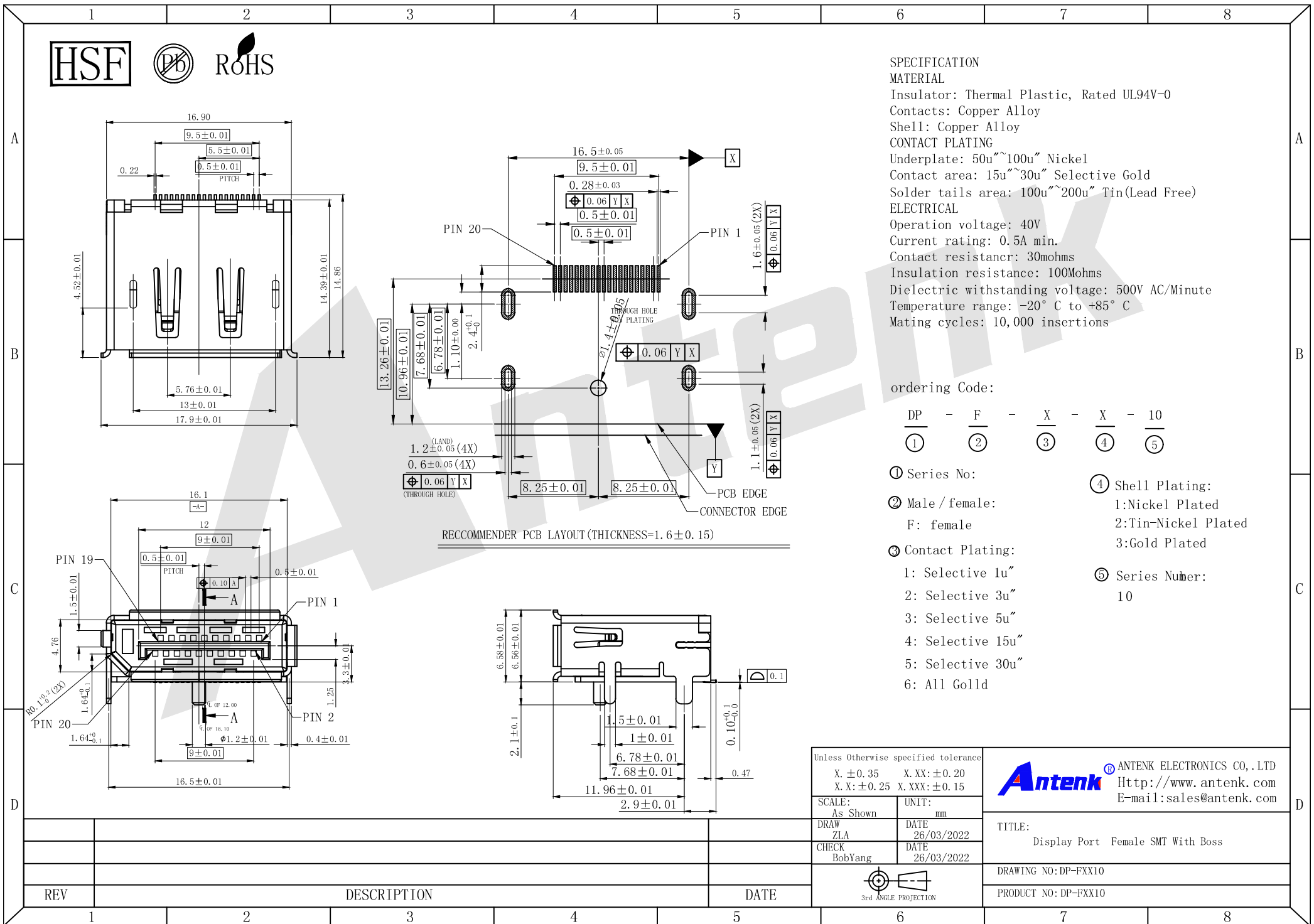
1:Nickel Plated

2:Tin-Nickel Plated

3:Gold Plated

⑤ Series Number:

10



Unless Otherwise specified tolerance
 X. ±0.35 X.XX:±0.20
 X.X:±0.25 X.XXX:±0.15

SCALE: As Shown	UNIT: mm
DRAW ZLA	DATE 26/03/2022
CHECK BobYang	DATE 26/03/2022

Antenk ANTENK ELECTRONICS CO., LTD
[Http://www.antenk.com](http://www.antenk.com)
 E-mail:sales@antenk.com

TITLE:
Display Port Female SMT With Boss

DRAWING NO: DP-FXX10

PRODUCT NO: DP-FXX10

