

Directional control valves, electrically operated type WE6...61B/...

Sizes 6

up to 31.5MPa

up to 80 L/min

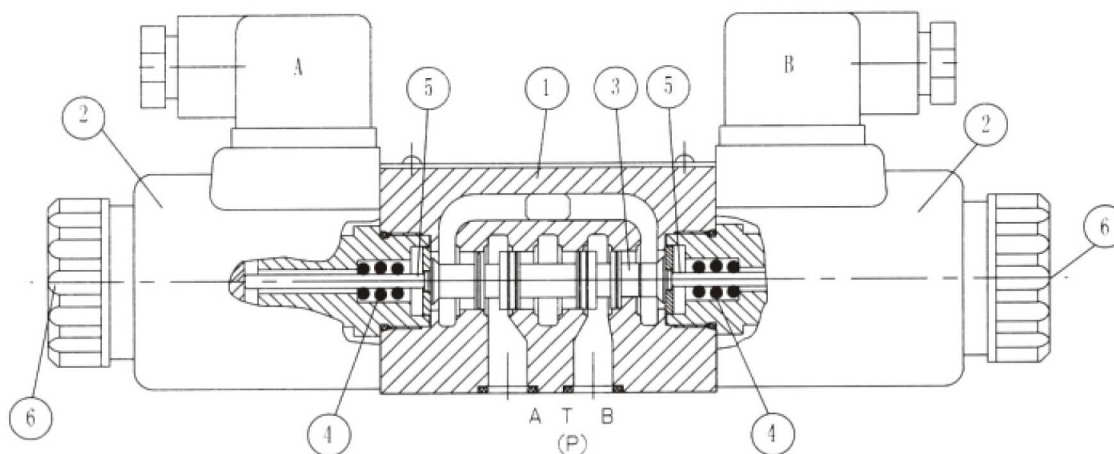


Features:

- Direct solenoid actuated directional spool valve high performance version
- Wet pin DC or AC solenoids with removable coil
- Solenoid coil can be rotated through 90 °
- It is not necessary to open the pressure tight chamber when changing the coil
- Electrical connections either as individual or central connections
- Hand override, optional



Functional description, section



Type WE6...60B/

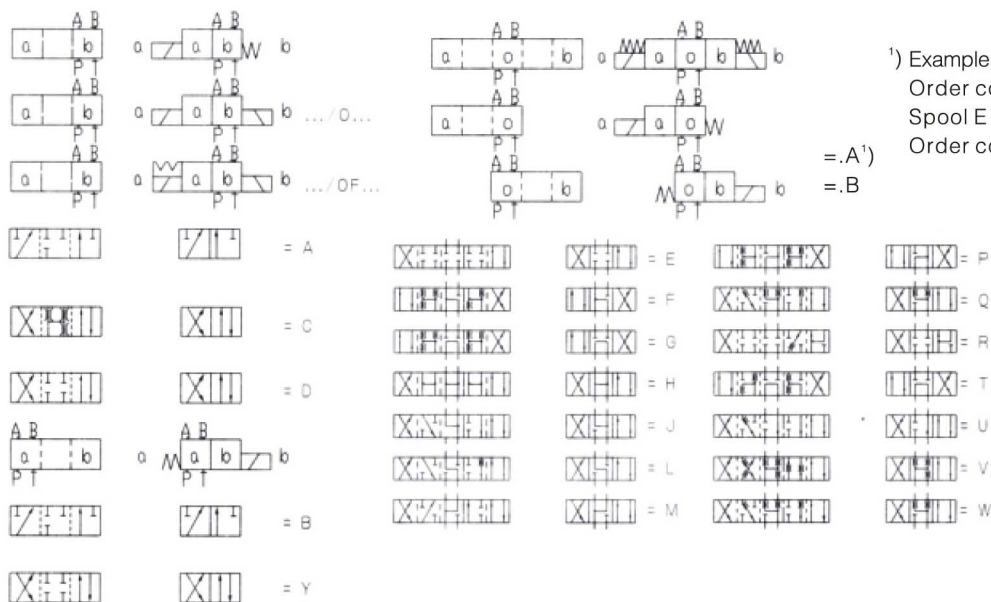
Essentially the directional control valves consist of housing (1), one or two solenoids (2), the control spool (3), and one or two return springs (4). In the de-energized condition the control spool (3) is held in the neutral or initial position by means of return springs (4) (except for impulse spools). The control spool (3) is actuated via wet pin solenoids (2). The force of the solenoids (2) acts via the plunger (5) on the control spool (3) and pushes this from its neutral position to the required end position. This gives free--flow from P to A and B to T or P to B and A to T.

When solenoid (2) is de-energized, the control spool (3) is returned to its neutral position by means of the return springs (4). An optional hand override (6), allows movement of the control spool (3) without energising the solenoid.

Ordering details

		WE6		60		C							*
3 Service ports = 3 4 Service ports = 4		Further details in clear text											
Symbol see below													
Series 60 = 60 (60 to 69: unchanged installation and connection dimensions)													
Spring return = No code Without spring return = O Without spring return, but with detent = OF													
Wet pin solenoid with removable coil													
12V DC = G12 220V AC, 50H = W220-50 24V DC = G24 DC solenoid commuting automatically (Not dependent on frequency) = W220R													
		No code = Mineral oil V = Phosphate ester											
		No code = Without cartridge throttle B08 = throttle Φ 0.8mm B10 = throttle Φ 1.0mm B12 = throttle Φ 1.2mm											
		Individual connections K4 = With Component Plug Without Plug-in Connector Z4 = Normal Plug Z5 = Large Angled Plug Z5L = Large Angled Plug With Indicator Light Central Connections DKL = Central Connection On Cover With Indicator Light (without Angled Plug-in Connector)											
		No code = Without Hand Override N = With Hand Override N9 = With Protected Hand Override (standard)											

Symbol



1) Example: Spool E with switch position "a".
 Order code: ...EA...
 Spool E with switch position "b".
 Order code: ...EB...

Technical data

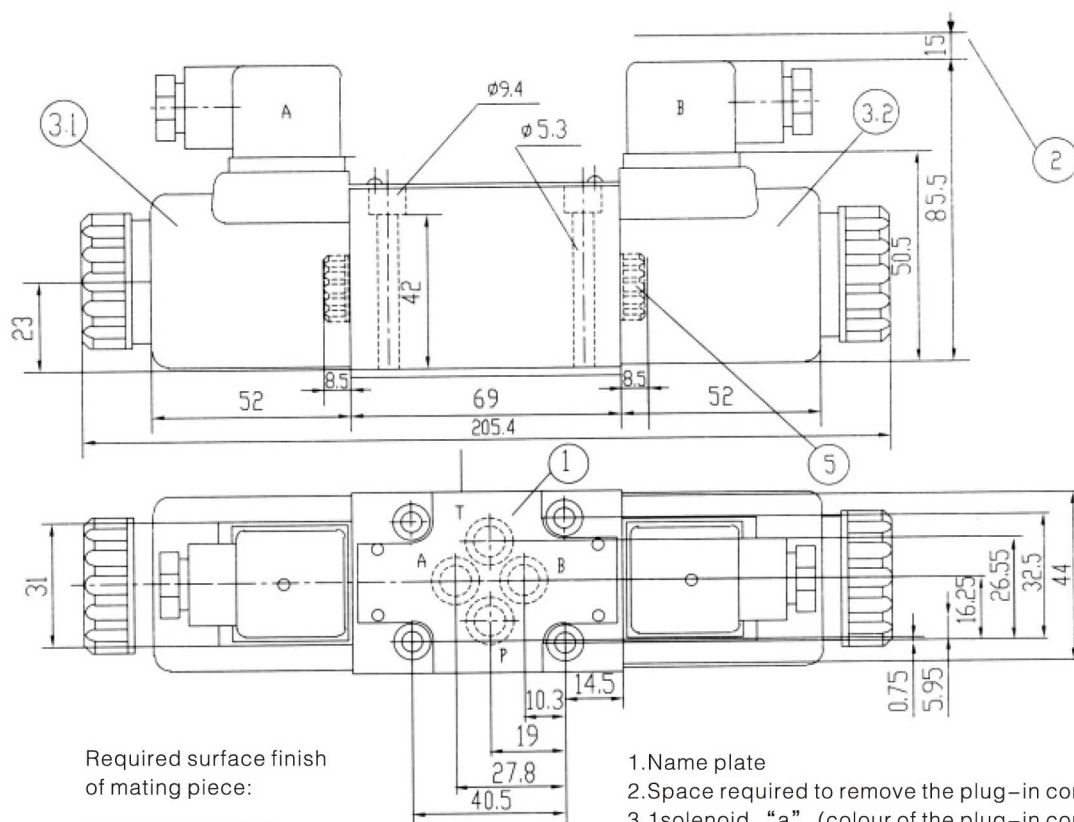
Hydraulic

Max. working pressure port A, B, P	MPa	to 35.0
Port T	MPa	to 21.0(=); to 16.0(∼) If the Operating Pressure Is Above The Pressure Permitted At The T Port
Max. flow	L/min	For ports A and B, the T port must be used as a drain connection
Fluid		to 80(=); to 60(∼)
Viscosity Range	mm ² /s	Mineral oil or Phosphate ester
Temperature Range	°C	2.8~500
Degree Of Contamination		-30~+80
		Recommend a filter with a minimum retention rate of $\beta_{10} \geq 75$

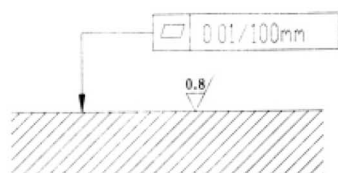
Electrical

Voltage type		DC	AC
Available voltages	V	12、24、42、60、96、	42、110、120、230
		110、180、205、220	50/60Hz
Power requirement	W	30	
Holding power	VA	—	50
Switch— on power	VA	—	220
Duty cycle		100%	
Switch time to ISO6403	Open (ms)	25 to 45	10 to 20
	Close (ms)	10 to 25	15 to 40
Protection to DIN		IP65	
Switching frequency	Cycles/h	up to 15000	up to 7200

Individual connections

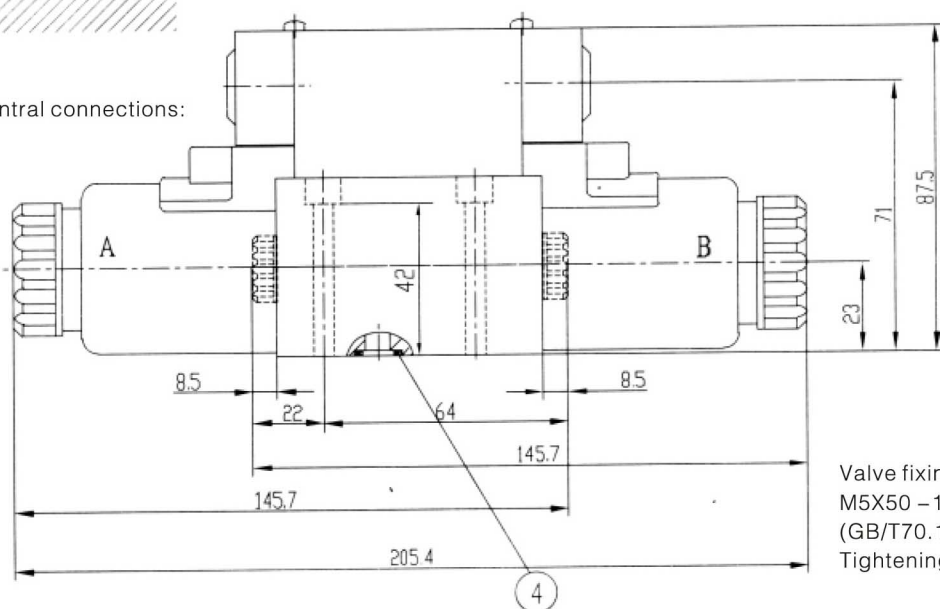


Required surface finish
of mating piece:



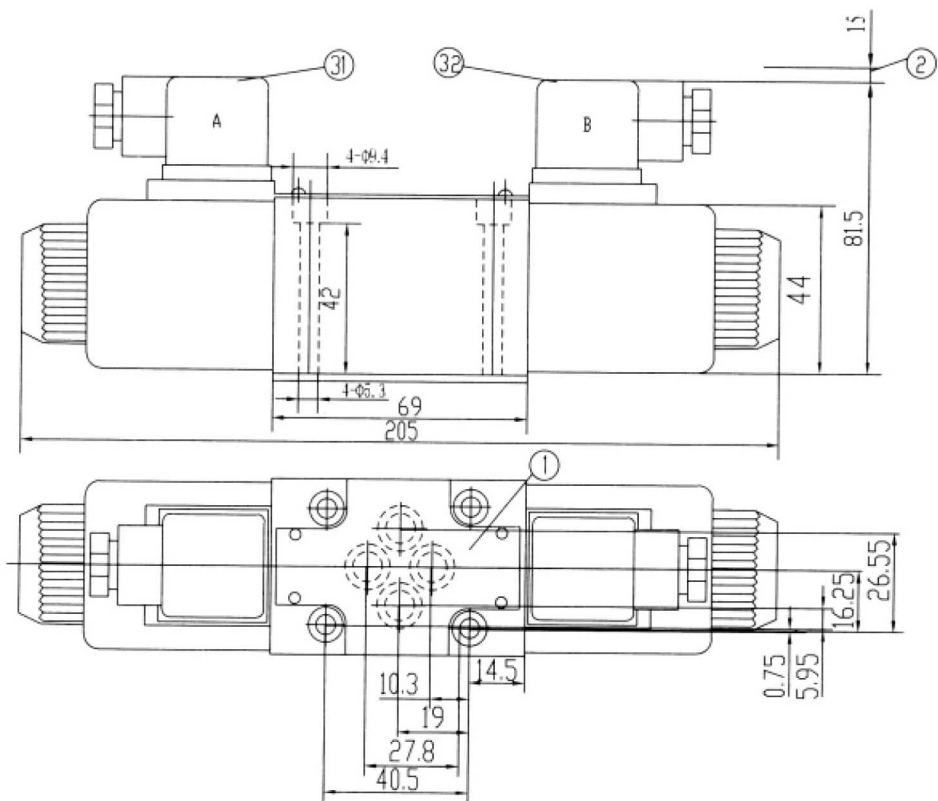
- 1.Name plate
- 2.Space required to remove the plug-in connector
- 3.1solenoid "a" (colour of the plug-in connector, grey)
- 4.2solenoid "b" (colour of the plug-in connector, black)
- 5.O-ring:
- 6.Cover for valve with one solenoid

Central connections:

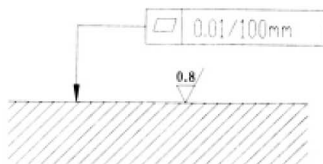


Valve fixing screw:
M5X50 -10.9
(GB/T70.1-2000)
Tightening torque:MA=8.9Nm

Individual connections

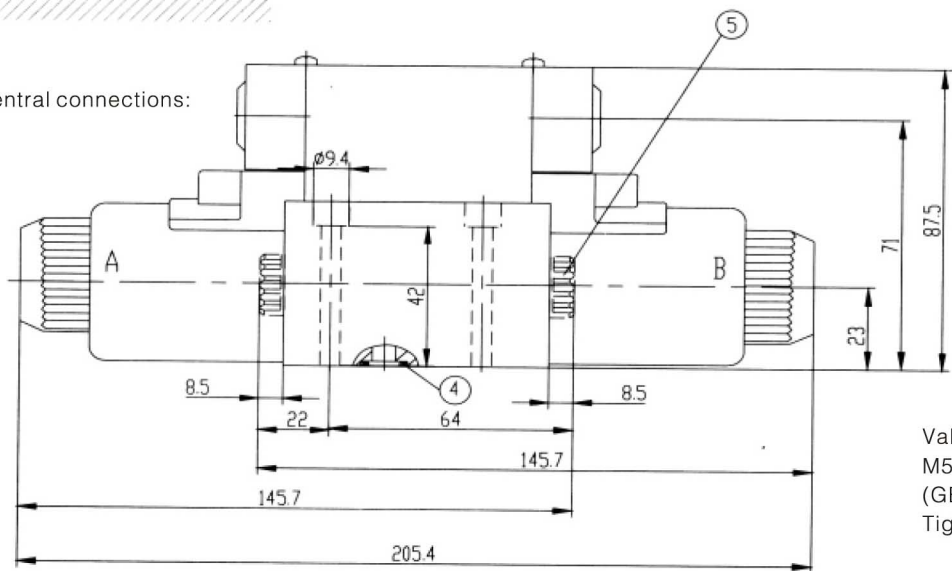


Required surface finish
of mating piece:



- 1.Name plate
- 2.Space required to remove the plug-in connector
- 3.1solenoid "a" (colour of the plug-in connector. grey)
- 4.2solenoid "b" (colour of the plug-in connector. black)
- 5.O-ring;
- 6.Cover for valve with one solenoid

Central connections:



Valve fixing screw:
M5X50 – 10.9
(GB/T70.1–2000)
Tightening torque:MA=8.9Nm