

## Directional control valves, electrically operated type WE10...31B/

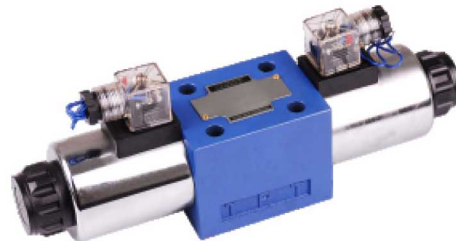
Sizes 10

up to 31.5MPa

up to 120 L/min

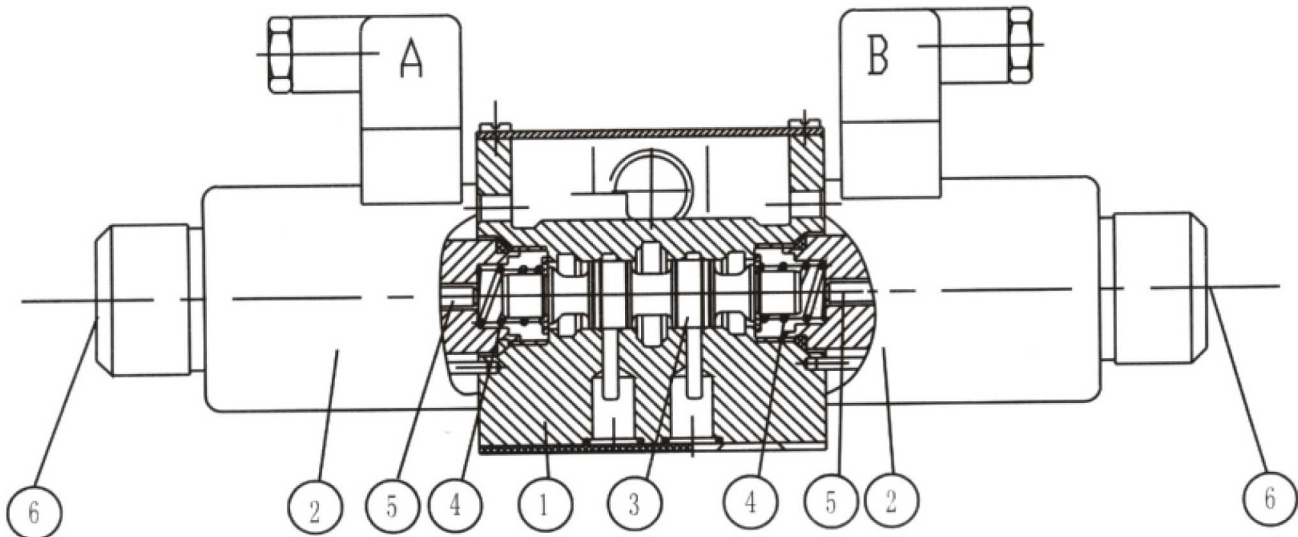
### Feature:

- Direct solenoid operated directional spool valve as standard version
- Wet pin DC or AC solenoids with removable
- perfect outline
- Coils may be replaced without opening pressure-tight chamber
- Choice of either central or individual electrical connections
- Optional hand over-ride
- long life



### Functional description, section

Directional valves basically comprise the housing (1), one or two solenoids (2), control spool (3), and one or two return springs (4). At rest, control spool (3) is held in its central or initial position by means of return springs (4) (except in the case of impulse spools). Control spool (3) is operated by wet pin solenoids (2). The force of solenoid (2) acts on control spool (3) and moves it from its rest position to the desired end position. This permits free flow from P to A and B to T or P to B and A to T. On de-energizing solenoid (2) control spool (3) is returned to its initial position by return spring (4). Optional hand over-ride (5) permits control spool (3) to be moved without the solenoids being energized.



Type 4WE10...31B/...C

## Ordering details

	WE	10		31/	C						*	
3 Service ports	=	3										
4 Service ports	=	4										
Size 10	=	10										
Symbol see below												
Series 31 (30 to 39: unchanged installation and connection dimensions)	=	31										
Without spring return	=	O										
Without spring return, but with detent	=	OF										
With spring return	=	No code										
Solenoid with removable coil	=	C										
220V AC, 50Hz or 240V AC, 60Hz	=	W220										
24V DC	=	G24										
DC solenoid commuting automatically	=	W220R										
Without hand override	=	No code										
With hand override	=	N										
With protected hand override (standard)	=	N9										
Individual connections												
Normal plug	=	Z4										
Large angled plug	=	Z5										
Large angled plug with indicator light	=	Z5L										
With component plug without plug-in connector	=	K4										
Cable entry in cover with lamp	=	DL										
Central connections on cover with lamp and indicator light (without angled plug-in connector)	=	DKL										

## Technical data

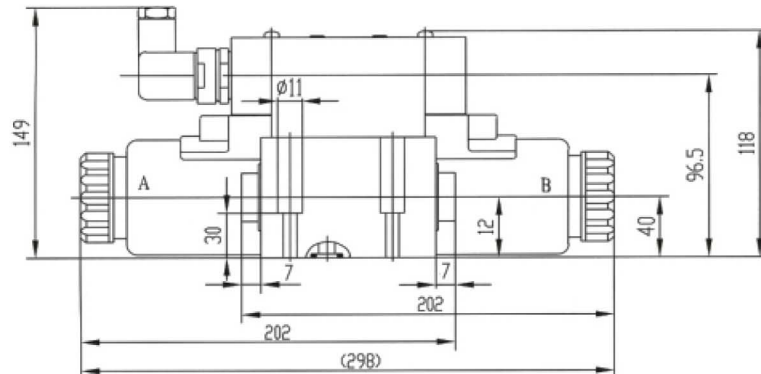
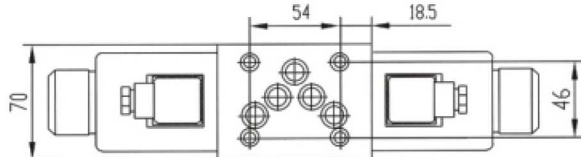
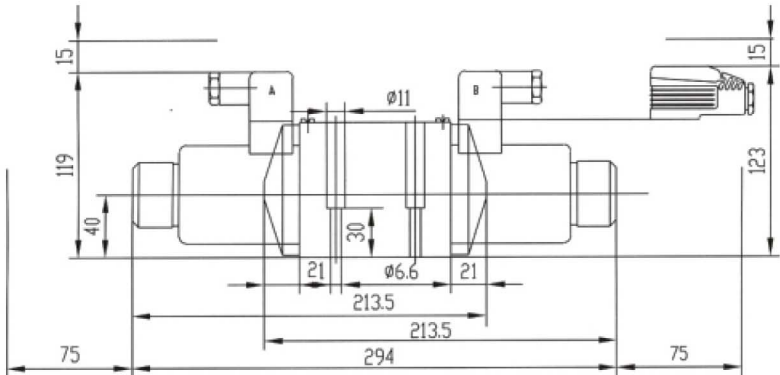
Operating pressure (MPa)	Port A, B, P	to 31.5
	Port T	to 16(∼) to 21(=)
Flow (L/min)		120
Cross section (switch position O)		With symbol Q approx. 6% of the nominal area with symbol W approx. 3%
Fluid		Mineral oil or Phosphate ester
Temperature range	℃	−30∼+ 80
Viscosity range	mm <sup>2</sup> /s	2.8∼500
Weight (Kg)	Valve with 1 solenoid	5.1(DC) ; 4.3 (AC)
	Valve with 2 solenoids	6.7(DC) ; 5.1 (AC)

For symbols A and B, the T port must be used as a drain connection if the operating pressure is above the pressure permitted at the T port

## Unit dimensions

Dimensions in mm

## Individual connections

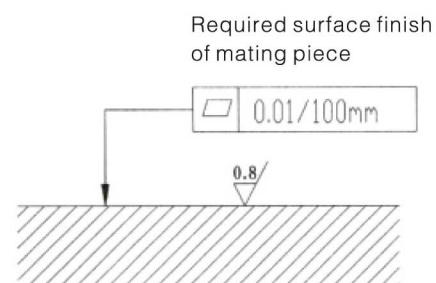


Valve fixing screw 4-M6x40-10.9(G B/T70.1-2000)

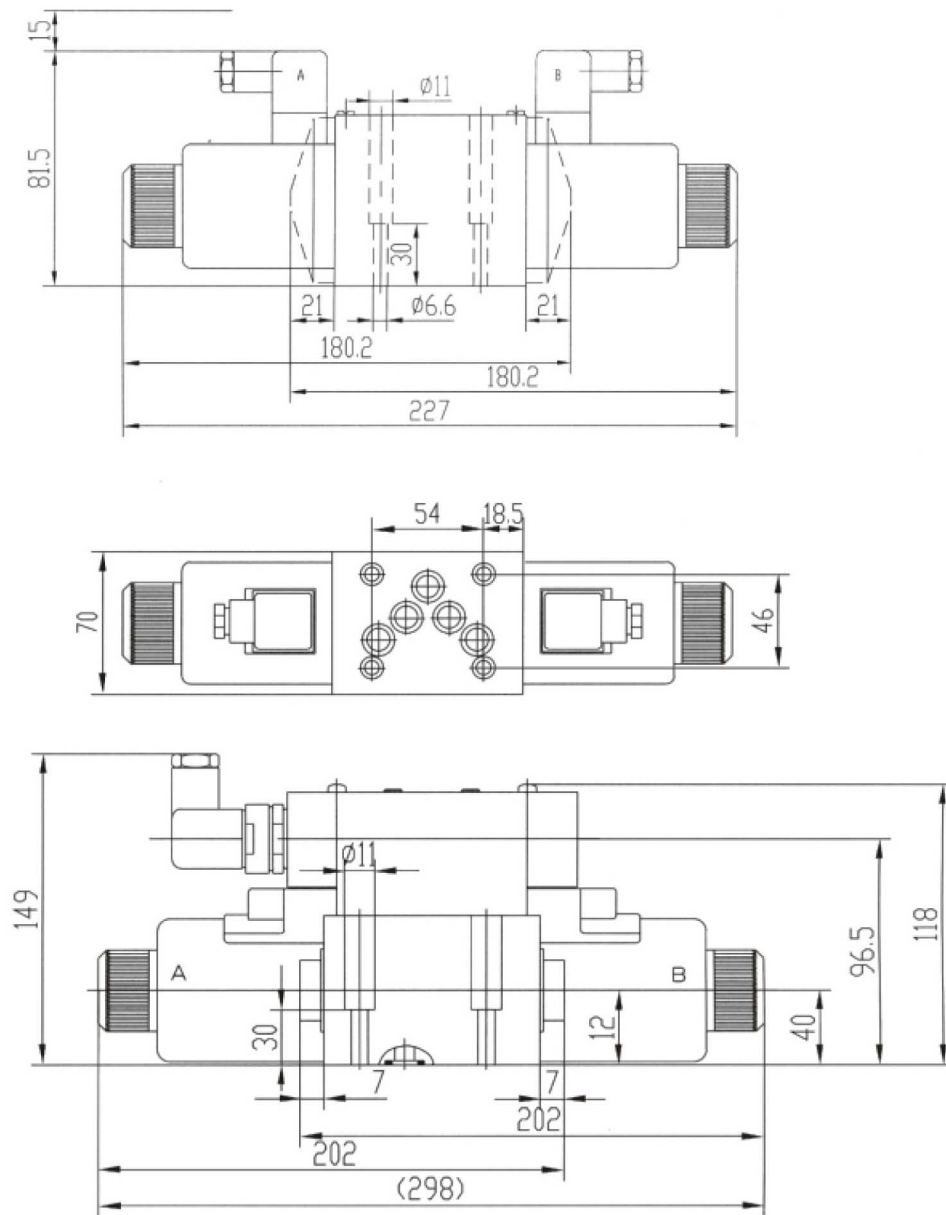
Subplate: G66/01(G3/8")G66/02(M18x1.5)

G67/01(G1/2")G67/02(M22x1.5)

G534/01(G3/4")G534/02(M22x1.5)



# Central connections



Valve fixing screw 4-M6x40-10.9(GB/T70.1-2000)

Subplate: G66/01(G3/8")G66/02(M18x1.5)

G67/01(G1/2")G67/02(M22x1.5)

G534/01(G3/4")G534/02(M22x1.5)

Required surface finish  
of mating piece

