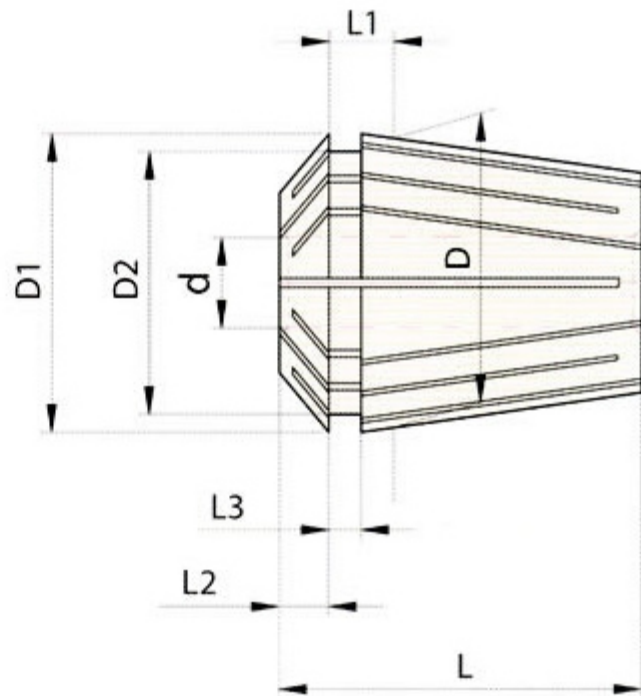


## ER milling collet chuck set



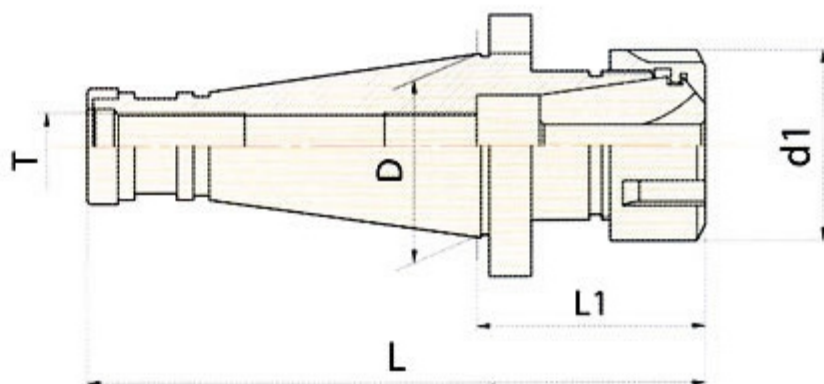
Model	所配夹头孔径
MS3×ER32×6支	6, 8, 10, 12, 16, 20
MS4×ER32×6支	
R8×ER32×6支	
NT30×ER32×6支	
MS3×ER40×7支	6, 8, 10, 12, 16, 20, 25
MS4×ER40×7支	
R8×ER40×7支	
NT30×ER40×7支	
NT40×ER40×7支	6, 8, 10, 12, 16, 20, 25
MS3×ER32×18支	
MS4×ER32×18支	
R8×ER32×18支	
NT30×ER32×18支	3, 4, 5, 6, 7, 8, 9, 10, 11, 12, 13, 14, 15, 16, 17, 18, 19, 20
NT40×ER32×18支	
MS4×ER40×23支	
R8×ER40×23支	
NT30×ER40×23支	3, 4, 5, 6, 7, 8, 9, 10, 11, 12, 13, 14, 15, 16, 17, 18, 19, 20, 21, 22, 23, 24, 25, 26
NT40×ER40×23支	
NT50×ER40×23支	
NT40×ER50×17支	
NT50×ER50×17支	6, 7, 8, 9, 10, 12, 14, 16, 18, 20, 22, 24, 26, 28, 30, 32, 34
MS3×ER40×15支	
MS4×ER40×15支	4, 5, 6, 8, 10, 12, 13, 15, 16, 18, 20, 21, 23, 25, 26
R8×ER40×15支	
NT30×ER40×15支	
NT40×ER40×15支	
NT50×ER40×15支	
C16×ER16-50×9支	2, 3, 4, 5, 6, 7, 8, 9, 10
C16×ER16-100×9支	
C16×ER16-150×9支	
C20×ER16-50×9支	
C20×ER16-100×9支	
C20×ER16-150×9支	2, 3, 4, 5, 6, 7, 8, 9, 10
C20×ER20-60×12支	
C20×ER20-120×12支	
C20×ER20-180×12支	2, 3, 4, 5, 6, 7, 8, 9, 10, 11, 12, 13, 14, 15, 16
C20×ER25-50×15支	
C20×ER25-100×15支	6, 8, 10, 12, 16, 20
C20×ER32-50×6支	
C20×ER32-100×6支	3, 4, 5, 6, 7, 8, 9, 10, 11, 12, 13, 14, 15, 16, 17, 18, 19, 20
C20×ER32-50×18支	
C20×ER32-100×18支	2, 3, 4, 5, 6, 7, 8, 9, 10, 11, 12, 13, 14, 15, 16
C25×ER25-50×15支	
C25×ER25-100×15支	6, 8, 10, 12, 16, 20
C25×ER32-50×6支	
C25×ER32-50×18支	3-20
C25×ER40-50×7支	6, 8, 10, 12, 16, 20, 25
C25×ER40-50×23支	3-26
C32×ER32-60×6支	6, 8, 10, 12, 16, 20
C32×ER32-60×18支	3-20
C32×ER40-50×7支	6, 8, 10, 12, 16, 20, 25
C32×ER40-50×23支	4-26

# BR collet (DIN6499)



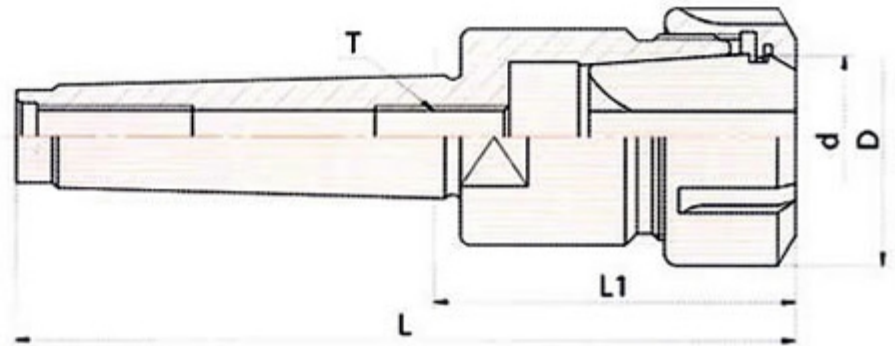
Model	d (H7)	D	D1	D2	L	L1	L2	L3	Collapsible capacity
ER8	0.5-5.0	8	8.5	6.5	13.5	2.7	1.5	1.2	0.5
ER11	1.0-7.0	11	11.5	9.5	18.0	3.8	2.5	2.0	0.5
ER16	1.0-2.0	16	17	13.8	27.5	6.26	4.0	2.7	0.5
	>2.0-10.0								1.0
ER20	1.0-2.5	20	21	17.4	31.5	6.36	4.8	2.8	0.5
	>2.5-13.0								1.0
ER25	1.0-2.5	25	26	22.0	34.0	6.66	5.0	3.1	0.5
	>2.5-16.0								1.0
ER32	2.0-3.5	32	33	29.2	40.0	7.16	5.5	3.6	0.5
	>3.5-20.0								1.0
ER40	3.0-26.0	40	41	36.2	46.0	7.66	7.0	4.1	1.0
ER50	6.0-10.0	50	52	46.0	60.0	12.6	8.5	5.5	1.0
	>10.0-34.0								2.0

# NT/ER milling collet chuck



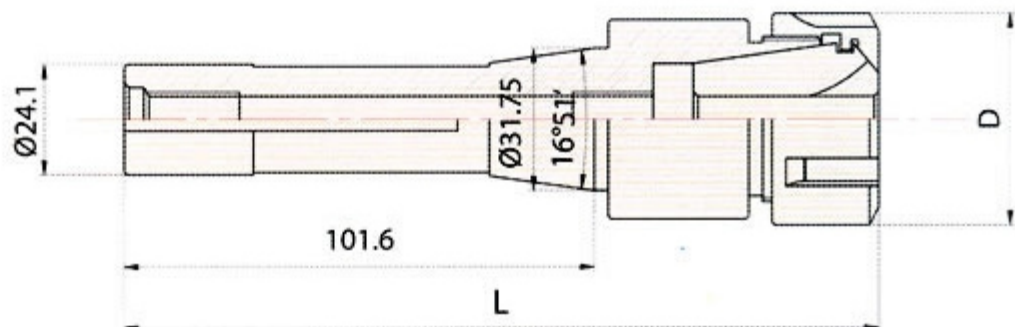
Model	L	L1	D	d1	T
NT30×ER16A-43	111.4	43	31.75	28	M12×1.75
NT30×ER20A-45	113.4	45	31.75	34	M12×1.75
NT30×ER25-55	123.4	55	31.75	42	M12×1.75
NT30×ER32-60	128.4	60	31.75	50	M12×1.75
NT30×ER40-75	143.4	75	31.75	63	M12×1.75
NT40×ER16A-45	138.4	45	44.45	28	M16×2
NT40×ER20A-45	138.4	45	44.45	34	M16×2
NT40×ER25-55	148.4	55	44.45	42	M16×2
NT40×ER32-60	153.4	60	44.45	50	M16×2
NT40×ER40-70	163.4	70	44.45	63	M16×2
NT40×ER50-80	173.4	80	44.45	78	M16×2
NT50×ER32-75	201.8	75	69.85	50	M24×3
NT50×ER50-80	206.8	80	69.85	63	M24×3
NT50×ER50-80	206.8	80	69.85	78	M24×3

# MS/ER milling collet chuck



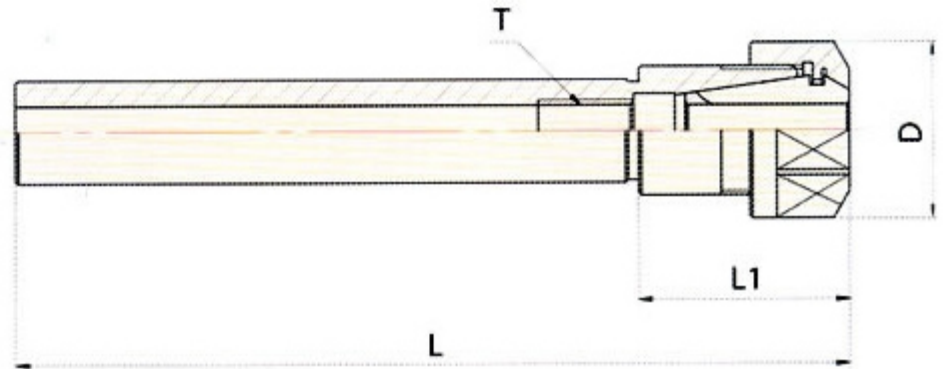
Model	L	L1	D	d	T
MS2×ER20-52	116	52	35	20	M10×1.5
MS2×ER25-55	119	55	42	25	M10×1.5
MS3×ER25-55	136	55	42	25	M12×1.75
MS3×ER32-60	141	60	50	32	M12×1.75
MS3×ER40-70	151	70	63	40	M12×1.75
MS4×ER32-60	162.5	60	50	32	M16×2
MS4×ER40-70	172.5	70	63	40	M16×2

## R8/ER milling collet chuck



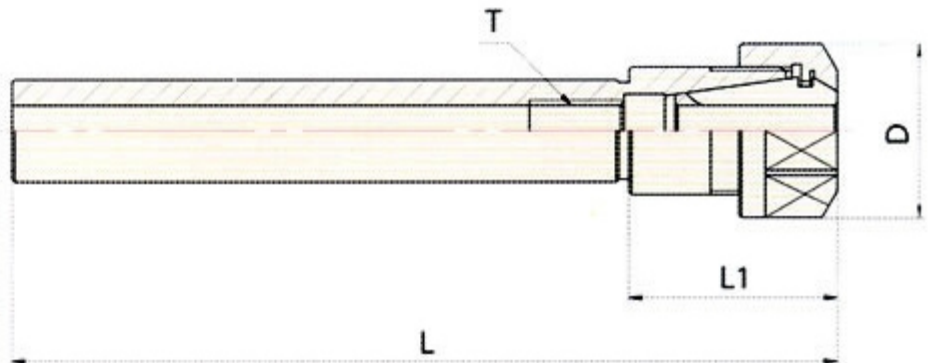
Model	L	L1	D
R8 × ER16-38	139.3	38	28
R8 × ER20-45	146.2	45	34
R8 × ER25-50	150.7	50	42
R8 × ER32-60	160.7	60	50
R8 × ER40-65	165.7	65	63

# Straight long type C/ER collet chuck



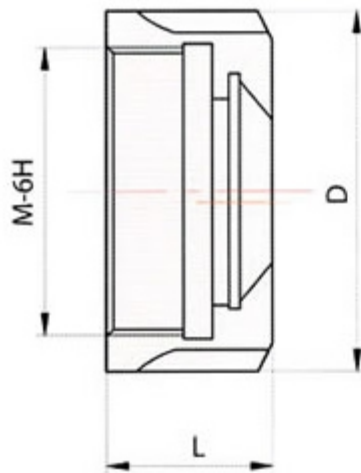
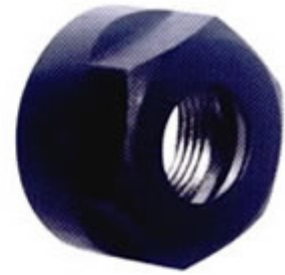
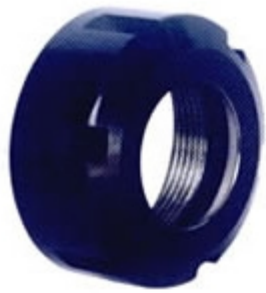
Model	L	L1	D	T
C16×ER16A-50	85.1	35.1	22	M10×1.5
C16×ER16A-100	135.1	35.1	22	M10×1.5
C16×ER16A-150	185.1	35.1	22	M10×1.5
C20×ER16A-50	85.1	35.1	22	M10×1.5
C20×ER16A-100	135.1	35.1	22	M10×1.5
C20×ER16A-150	185.1	35.1	22	M10×1.5
C20×ER20A-60	100.5	40.5	35	M12×1.75
C20×ER20A-120	160.5	40.5	35	M12×1.75
C20×ER20A-180	220.5	40.5	35	M12×1.75
C20×ER25A-50	101	51	42	M12×1.75
C20×ER25A-100	151	51	42	M12×1.75
C20×ER32A-50	101.5	51.5	50	M12×1.75
C20×ER32A-100	151.5	51.5	50	M12×1.75
C25×ER16A-150	185.1	35.1	22	M10×1.5
C25×ER20A-140	175.1	40.5	35	M12×1.75
C25×ER25-50	101	51	42	M16×2
C25×ER25-100	151	51	42	M16×2
C25×ER32-50	101.5	51.5	50	M16×2
C25×ER40-50	115	65	63	M16×2
C32×ER32-60	111.5	51.5	50	M16×2
C32×ER40-50	115	65	63	M16×2

# Straight long type C/ERM collet chuck

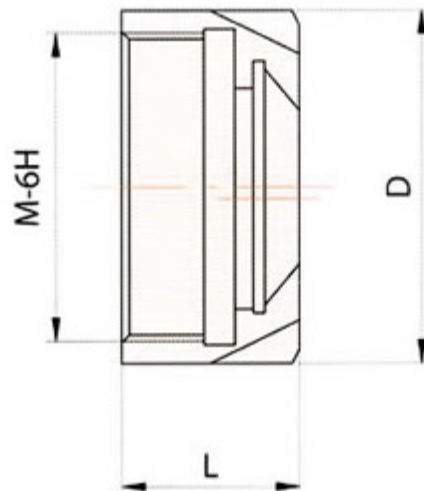


Model	L	L1	D	d	T
C8×ER8M-55	79	24	12	8	M4×0.7
C10×ER8M-100	117	17	12	8	M4×0.7
C10×ER8M-150	167	17	12	8	M4×0.7
C10×ER8M-180	197	17	12	8	M4×0.7
C12×ER8M-55	72	17	12	8	M4×0.7
C12×ER8M-120	137	17	12	8	M4×0.7
C12×ER8M-180	197	17	12	8	M4×0.7
C12×ER11M-80	106.5	26.5	16	11	M8×1.5
C16×ER11M-50	68.5	18.5	16	11	M8×1.5
C16×ER11M-100	118.5	18.5	16	11	M8×1.5
C16×ER11M-140	158.5	18.5	16	11	M8×1.5
C16×ER16M-80	105	25	22	16	M12×1.75
C20×ER16M-100	125	25	22	16	M12×1.75
C20×ER16M-140	165	25	22	16	M12×1.75
C20×ER16M-160	200	40	22	16	M12×1.75
C20×ER20M-60	100	40	28	20	M12×1.75
C20×ER20M-100	140	40	28	20	M12×1.75
C20×ER20M-120	160	40	28	20	M12×1.75
C20×ER20M-150	190	40	28	20	M12×1.75
C20×ER20M-180	208	28	28	20	M12×1.75
C25×ER20M-140	180	40	28	20	M12×1.75

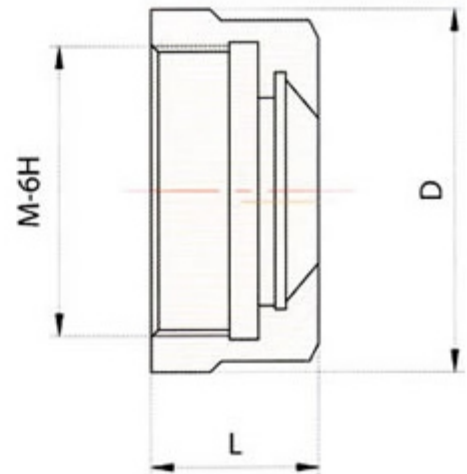
# Nut for ER milling chuck



UM 型



M 型

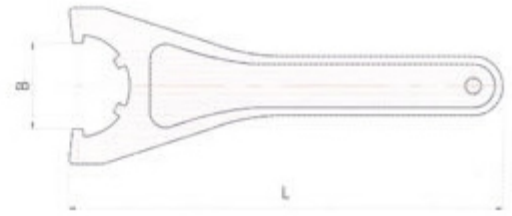


A 型

Type	Model	D (mm)	L (mm)	M	Wt (kg)
A	ER11-A	19	11.3	M14×0.75	0.005
	ER16-A	28	17.5	M22×1.5	0.010
	ER20-A	35	19	M25×1.5	0.050
M	ER8-M	12	12	M10×1.75	0.005
	ER11-M	16		M13×1.75	0.010
	ER16-M	22	18	M19×1	0.05
	ER20-M	28	18	M24×1	0.60
	ER25-M	35	20	M30×1	0.08
UM	ER25-UM	42	20	M32×1.5	0.14
	ER32-UM	50	22.5	M40×1.5	0.20
	ER40-UM	63	22.5	M50×1.5	0.30
	ER50-UM	78	35.5	M64×2	0.50



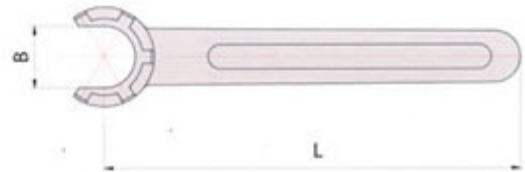
# Spanner for ER milling chuck



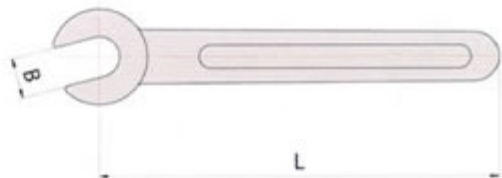
Clamping Nut	B	L
ER25-B ER25-T2	37	210
ER32-B ER32-T2	45	250
ER40-B ER40-T2	58	290
ER50-B ER50-T2	72	350



Model	L	Clamping Nut
38-42	168	ER25-B ER25-T2
45-52	190	ER32-B ER32-T2
55-63	210	ER40-B ER40-T2
78-85	240	ER50-B ER50-T2



适用螺帽	L	B
ER8-M	75	13
ER11-M	95	17
ER16-M	117	22.5
ER20-M	129	28.5
ER25-M	142.5	35.5



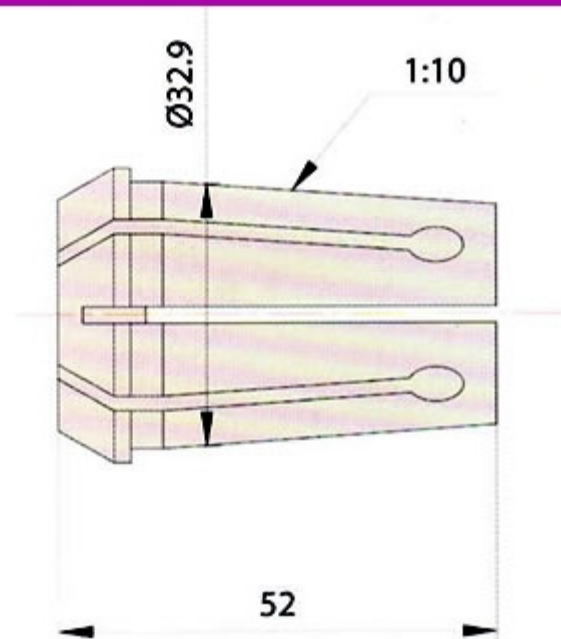
适用螺帽	L	B
ER11-A	120	40
ER16-A	140	53
ER20-A	160	60

# OZ milling collet chuck set



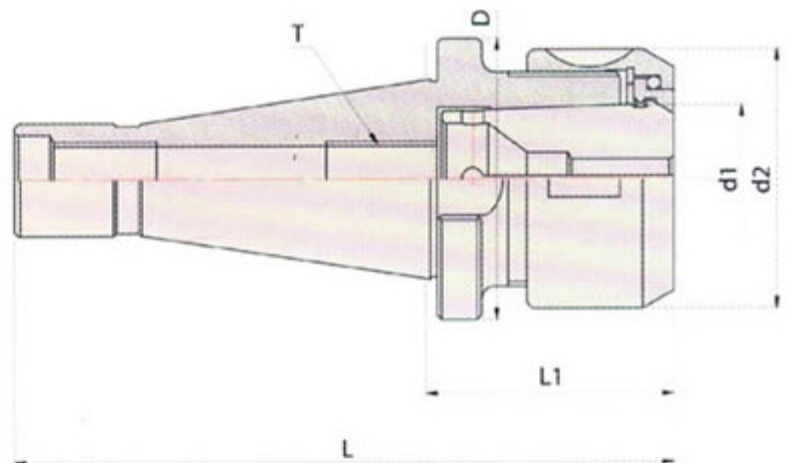
Model	Collets		本体后拉螺纹	Wt
	mm	Inch		
MSB2×OZ25×5支	Φ6、8、10、 12、16mm	1/4"、5/16"、3/8" 1/2"、5/8"	M10×1.5P、3/8" W16	3.4
MSB3×OZ25×5支			M12×1.75P、1/2" W12	3.8
MSB4×OZ25×5支			M16×2.0P、5/8" W11	4
R8×OZ25×5支			7/16"×20 UNF	3.7
NT30×OZ25×5支			M12×1.75P、1/2" W12	3.5
NT40×OZ25×5支			M16×2.0P、5/8" W11	3.8
NT50×OZ25×5支			M24×3.0P、1" W8	6.2
MSB2×OZ25×7支	Φ6、8、12、16、 20、25mm	1/4"、5/16"、3/8" 1/2"、5/8"、3/4"、1"	M10×1.5P、3/8" W16	3.4
MSB3×OZ25×7支			M12×1.75P、1/2" W12	3.8
MSB4×OZ25×7支			M16×2.0P、5/8" W11	4
R8×OZ25×7支			7/16"×20 UNF	3.7
NT30×OZ25×7支			M12×1.75P、1/2" W12	3.5
NT40×OZ25×7支			M16×2.0P、5/8" W11	3.8
NT50×OZ25×7支			M24×3.0P、1" W8	6.2
MSB3×OZ25×15支	Φ3、4、5、6、7 8、9、10、11、12、13 16、18、20、25mm	1/8"、3/16"、1/4"、 5/16"、3/8"、7/16" 1/2"、9/16"、5/8"、 11/16"、 3/4"、13/16"、7/8"、1"	M12×1.75P、1/2" W12	3.8
MSB4×OZ25×15支			M16×2.0P、5/8" W11	4
R8×OZ25×15支			7/16"×20 UNF	3.7
NT30×OZ25×15支			M12×1.75P、1/2" W12	3.5
NT40×OZ25×15支			M16×2.0P、5/8" W11	3.8
NT50×OZ25×15支			M24×3.0P、1" W8	6.2
MSB4×OZ25×8支	Φ6、8、12、16、 20、25、32mm	1/4"、5/16"、3/8" 1/2"、5/8"、3/4"、1"、1- 1/4"	M16×2.0P、5/8" W11	6.5
MSB5×OZ25×8支			M24×3.0P、1" W8	9
NT40×OZ25×8支			M16×2.0P、5/8" W11	6.5
NT50×OZ25×8支			M24×3.0P、1" W8	9.5
MSB4×OZ25×16支	Φ3、4、5、6、7 8、9、10、11、12、13、 16、18、20、25、32mm	1/4"、5/16"、3/8" 1/2"、5/8"、3/4"、1"	M16×2.0P、5/8" W11	11
MSB5×OZ25×16支			M24×3.0P、1" W8	12
NT40×OZ25×16支			M16×2.0P、5/8" W11	11
NT50×OZ25×16支			M24×3.0P、1" W8	13

## OZ collet



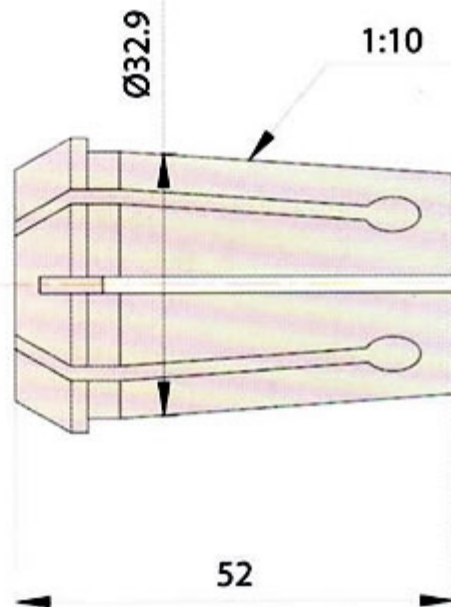
整组规格	内孔规格
OZ-25-M	Φ6、8、12、16、20、25mm
	Φ3、4、5、6、7、9、11、13、18mm
OZ-25-INCH	1/8"、3/16"、1/4"、5/16"、3/8"、7/16"、1/2"、9/16"
	5/8"、11/16"、3/4"、13/16"、7/8"、1"

## FD020012 NT/OZ milling collet chuck



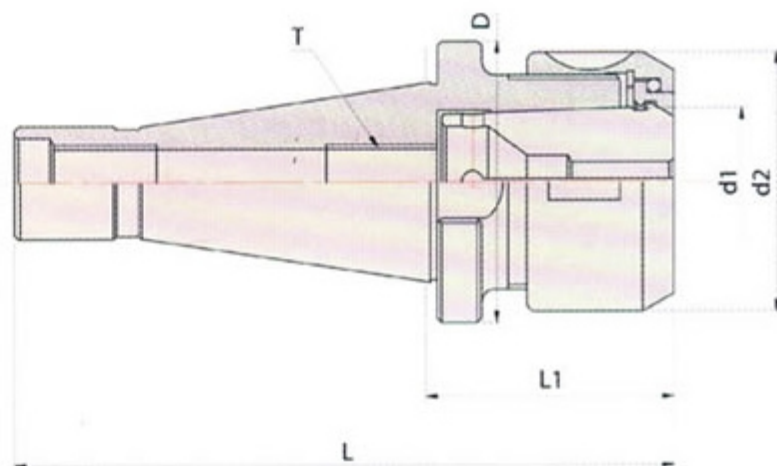
Model	L	L1	D	d1	d2	T
NT30×OZ25	128.5	59.6	49	32.9	60	M12×1.75P
NT40×OZ25	148	54.6	63	32.9	60	M16×2.0P
NT50×OZ25	185	58.2	97.5	32.9	60	M24×3.0P
NT40×OZ32	162	68.6	63	41.3	72	M16×2.0P
NT50×OZ32	230	103.2	97.5	41.3	72	M24×3.0P

## FD020011 OZ collet



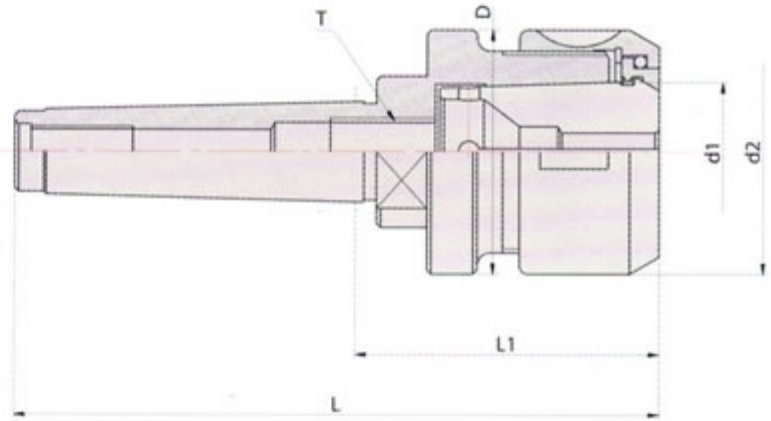
整組規格	內孔規格
OZ-25-M	Φ6、8、12、16、20、25mm
	Φ3、4、5、6、7、9、11、13、18mm
OZ-25-INCH	1/8"、3/16"、1/4"、5/16"、3/8"、7/16"、1/2"、9/16"
	5/8"、11/16"、3/4"、13/16"、7/8"、1

## FD020012 NT/OZ milling collet chuck



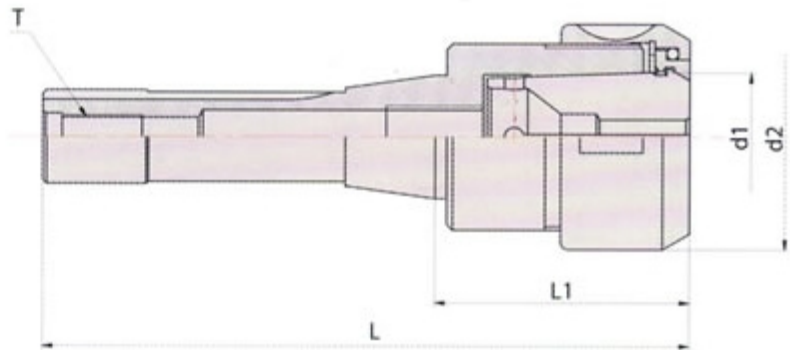
Model	L	L1	D	d1	d2	T
NT30×OZ25	128.5	59.6	49	32.9	60	M12×1.75P
NT40×OZ25	148	54.6	63	32.9	60	M16×2.0P
NT50×OZ25	185	58.2	97.5	32.9	60	M24×3.0P
NT40×OZ32	162	68.6	63	41.3	72	M16×2.0P
NT50×OZ32	230	103.2	97.5	41.3	72	M24×3.0P

## MS/OZ milling collet chuck



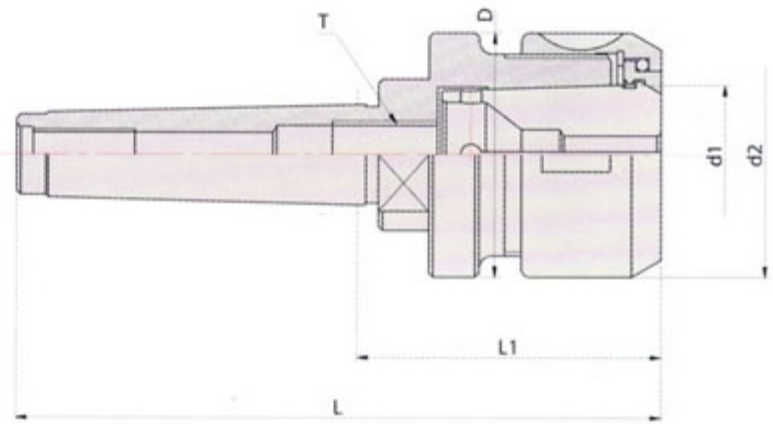
Model	L	L1	D	d1	d2	T
MTB2×OZ25	126	62	49	32.9	60	M10×1.5P
MTB3×OZ25	144	63	49	32.9	60	M12×1.75P
MTB4×OZ25	162	59.5	49	32.9	60	M16×2.0P
MTB4×OZ32	174	71.5	63	41.3	72	M16×2.0P
MTB5×OZ32	200	70.5	63	41.3	72	M16×2.0P

## FD020014 R8/OZ milling collet chuck



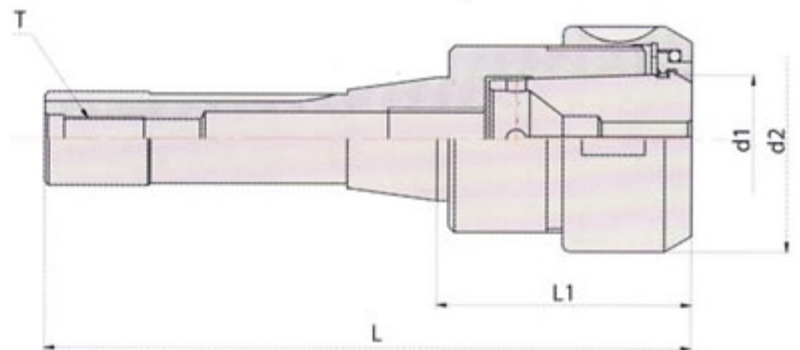
Model	L	L1	d1	d2	T
R8×OZ25	163	61	32.9	60	7/16-20UNF

## FD020013 MS/OZ milling collet chuck



Model	L	L1	D	d1	d2	T
MTB2×OZ25	126	62	49	32.9	60	M10×1.5P
MTB3×OZ25	144	63	49	32.9	60	M12×1.75P
MTB4×OZ25	162	59.5	49	32.9	60	M16×2.0P
MTB4×OZ32	174	71.5	63	41.3	72	M16×2.0P
MTB5×OZ32	200	70.5	63	41.3	72	M16×2.0P

## FD020014 R8/OZ milling collet chuck



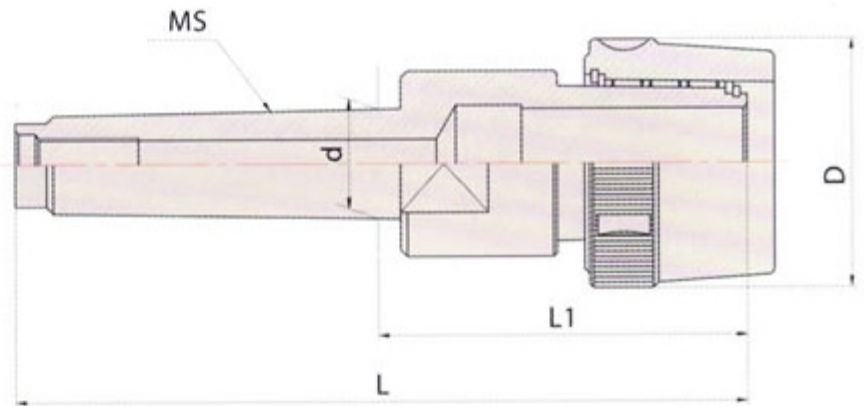
Model	L	L1	d1	d2	T
R8×OZ25	163	61	32.9	60	7/16-20UNF

## Power type MLC milling collet chuck set



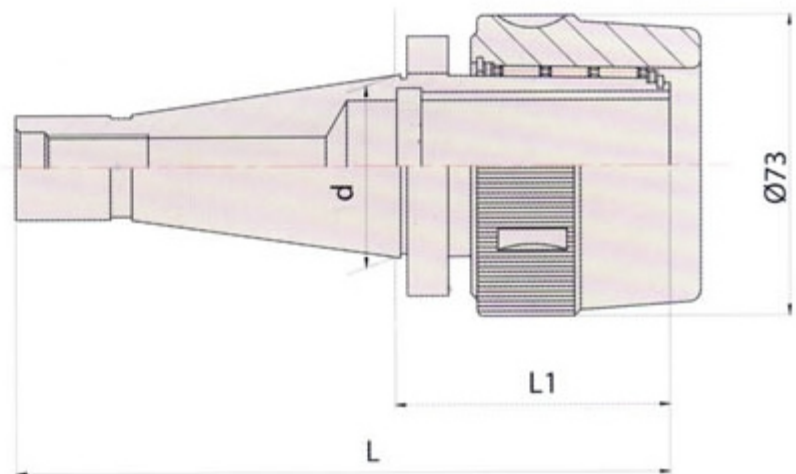
model	Collets	本体后拉螺纹
NT30×C32×7支	Φ6、8、10、12、16、20、25mm	M12×1.75P、1/2" W12
NT40×C32×7支	Φ6、8、10、12、16、20、25mm	M16×2.0P、5/8" W11
NT50×C32×7支	Φ6、8、10、12、16、20、25mm	M24×3.0P、1" W8
MS2×C20×7支	Φ6、8、10、12、16、20、25mm	M10×1.5P、3/8" W16
MS3×C20×7支	Φ6、8、10、12、16、20、25mm	M12×1.75P、1/2" W12
MS3×C32×7支	Φ6、8、10、12、16、20、25mm	M12×1.75P、1/2" W12
MS4×C32×7支	Φ6、8、10、12、16、20、25mm	M16×2.0P、5/8" W11

## Power type MS/MLC milling collet chuck set



Model	d	L	L1	D
MSB2-MLC20	17.78	134	70	63
MSB3-MLC20	23.825	151	70	63
MSB3-MLC32	23.825	171	90	73
MSB4-MLC32	31.267	192.5	90	73

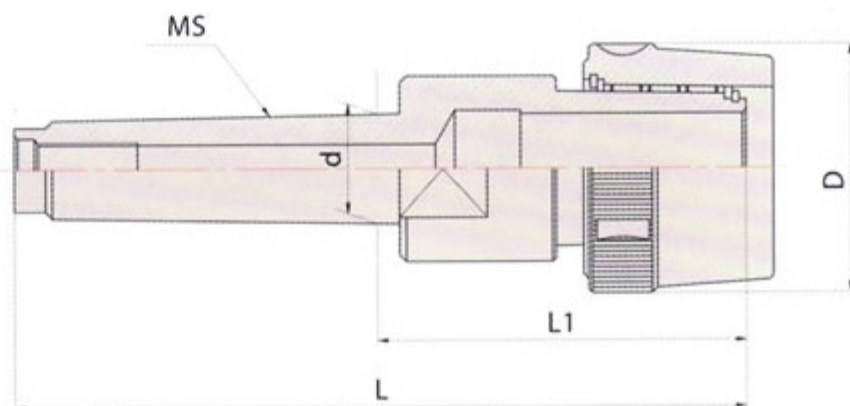
## FD020017 Power type NT/MLC milling collet chuck set



Model	d	L	L1
NT30×MLC32-70	31.75	134	70
NT40×MLC32-70	44.45	165	70
NT40×MLC32-105	44.45	200	105
NT50×MLC32-70	69.85	171.8	70
NT50×MLC32-105	69.85	206.8	105

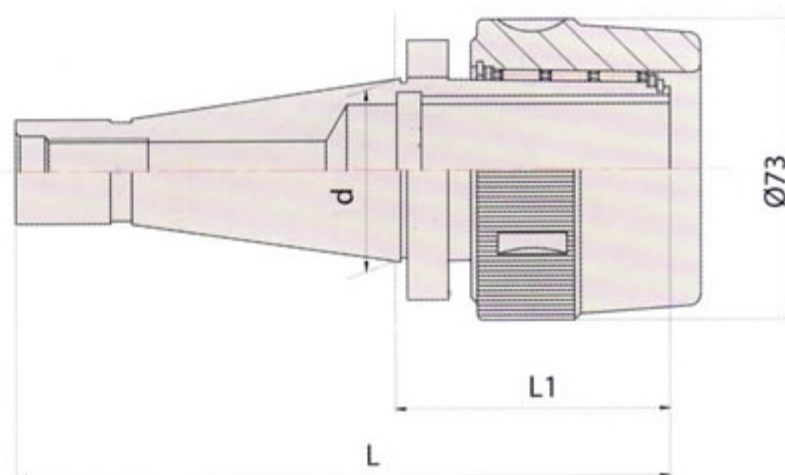


## FD020016 Power type MS/MLC milling collet chuck set



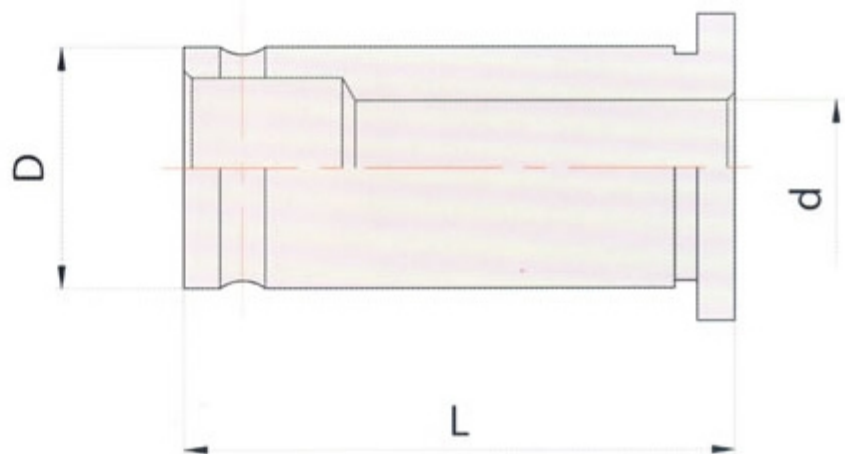
Model	d	L	L1	D
MSB2-MLC20	17.78	134	70	63
MSB3-MLC20	23.825	151	70	63
MSB3-MLC32	23.825	171	90	73
MSB4-MLC32	31.267	192.5	90	73

## FD020017 Power type NT/MLC milling collet chuck set



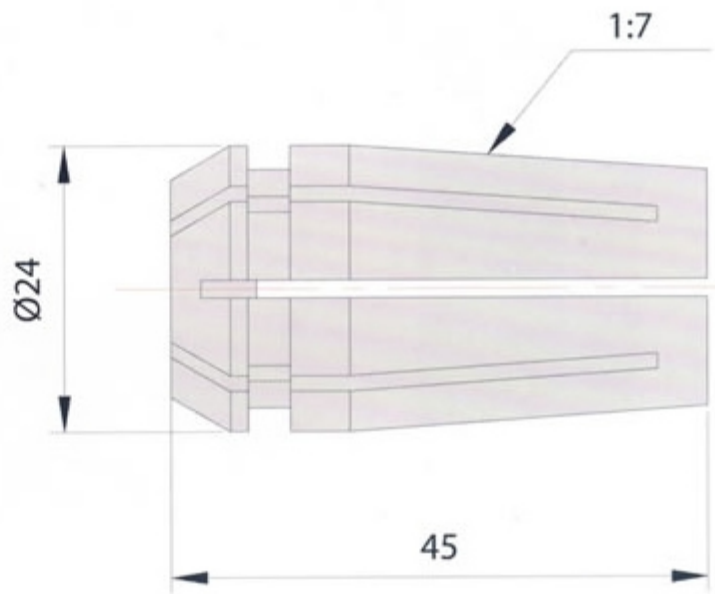
Model	d	L	L1
NT30×MLC32-70	31.75	134	70
NT40×MLC32-70	44.45	165	70
NT40×MLC32-105	44.45	200	105
NT50×MLC32-70	69.85	171.8	70
NT50×MLC32-105	69.85	206.8	105

# MLC Straight collet chuck



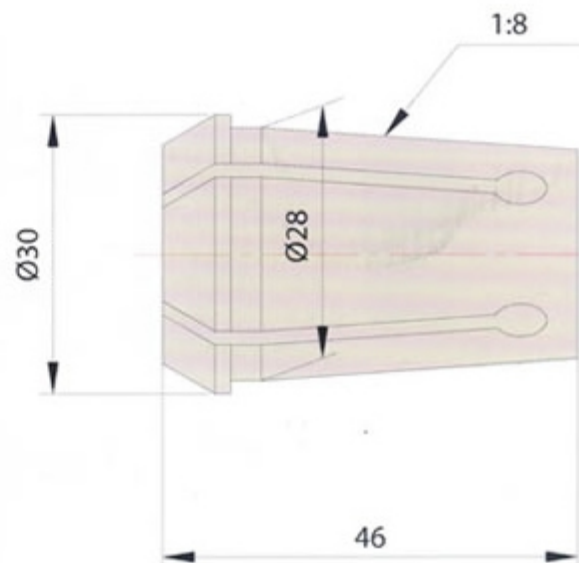
Model	D	d	L
JM7112	16	4、5、6、8、10、12	45
JM7116 (A)	22(20)	4、5、6、8、10、12、14、16	55(50)
JM7120	25	4、5、6、8、10、12、14、16、18、20	60
JM7125	32	4、5、6、8、10、12、14、16、18、20、25	65
JM7132 (A)	42(40)	4、5、6、8、10、12、14、16、18、20、28、30、32	80(73)

# J7316A milling collet chuck set



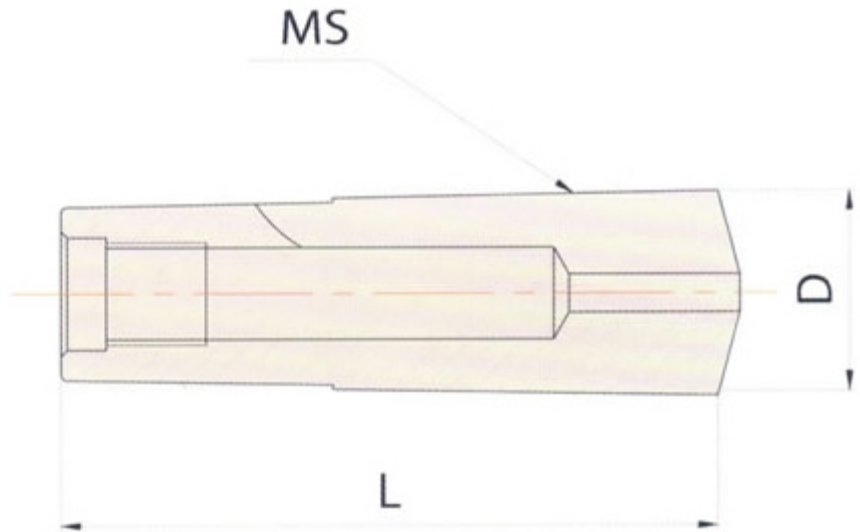
Model	Hole size		Shank	Mpes/se	Wt (kg)
	mm	in			
J7316A/R8			R8	8	3.58
J7316A/30			ISO30		3.373
J7316A/40	4	1/8"	ISO40		3.708
J7316A/50	5	3/16"	ISO50		5.11
J7316A/MS2	6	1/4"	MS2		3.52
J7316A/MS3	8	5/16"	MS3		3.752
J7316A/MS4	19	3/8"	MS4		4.646
J7316A/MS5	12	1/2"	MS5		3.43
J7316A/1"	14	9/16"	1"		3.80
J7316A/1-1/4"	16	5/8"	1-1/4"		4.506

# J7316B milling collet chuck set



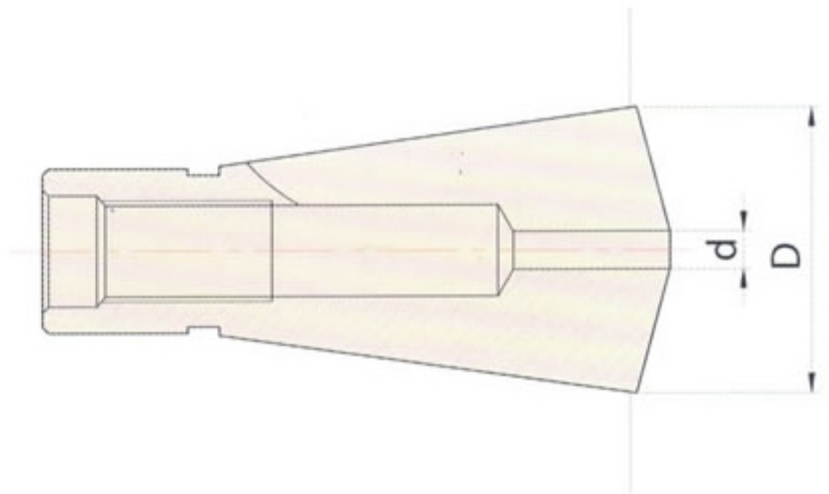
Model	Hole size		Shank	Mpes/se	Wt (kg)
	mm	in			
J7316B/R8			R8	8	3.58
J7316B/30			ISO30		3.373
J7316B/40	4	1/8"	ISO40		3.708
J7316B/50	5	3/16"	ISO50		5.11
J7316B/MS2	6	1/4"	MS2		3.52
J7316B/MS3	8	5/16"	MS3		3.752
J7316B/MS4	19	3/8"	MS4		4.646
J7316B/MS5	12	1/2"	MS5		3.43
J7316B/1"	14	9/16"	1"		3.80
J7316B/1-1/4"	16	5/8"	1-1/4"		4.506

## MS taper collet



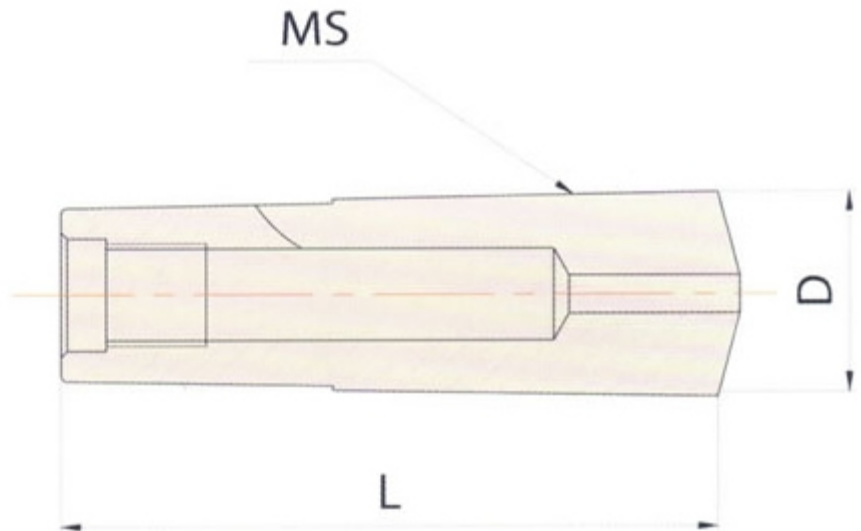
Model	Taper	Hole size		D (mm)	L (mm)	Wt (kg)
		in	mm			
JMS1-d	MS1	1/16"–5/16"	2 3 4 6 8	12.2	57	0.05
JMS2-d	MS2	1/8"–1/2"	2 3 6 5 10 11 12	18	68	0.08
JMS3-d	MS3	1/8"–3/4"	3 5 6 8 10 11 13 14 16 17 18	24.1	86	0.10
JMS4-d	MS4	1/8"–1"	3 4 7 9 12 15 19 21 23 25	31.5	108	0.38

## FD020022 7:24 collet



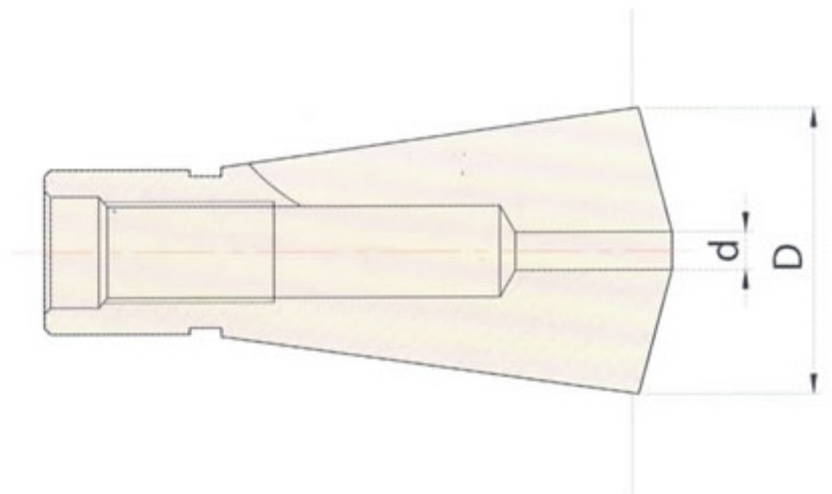
Model	D (mm)	d (mm)
7:24-30	31.75	Φ3-Φ20
7:24-40	44.45	Φ3-Φ25

## FD020021 MS taper collet



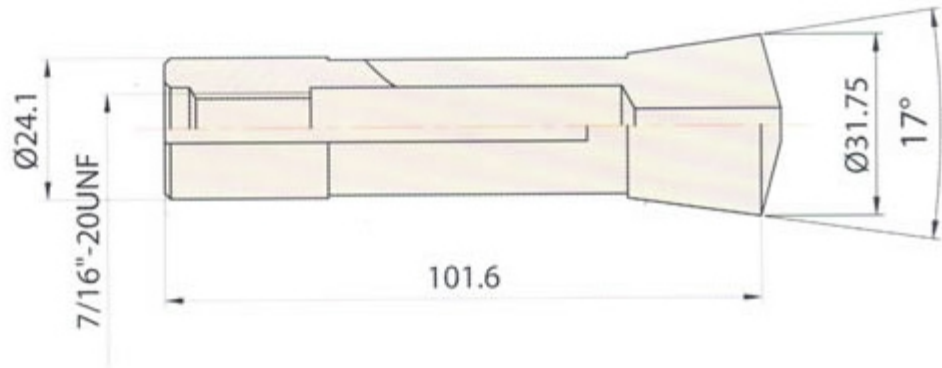
Model	Taper	Hole size		D (mm)	L (mm)	Wt (kg)
		in	mm			
JMS1-d	MS1	1/16"-5/16"	2 3 4 6 8	12.2	57	0.05
JMS2-d	MS2	1/8"-1/2"	2 3 6 5 10 11 12	18	68	0.08
JMS3-d	MS3	1/8"-3/4"	3 5 6 8 10 11 13 14 16 17 18	24.1	86	0.10
JMS4-d	MS4	1/8"-1"	3 4 7 9 12 15 19 21 23 25	31.5	108	0.38

## FD020022 7:24 collet



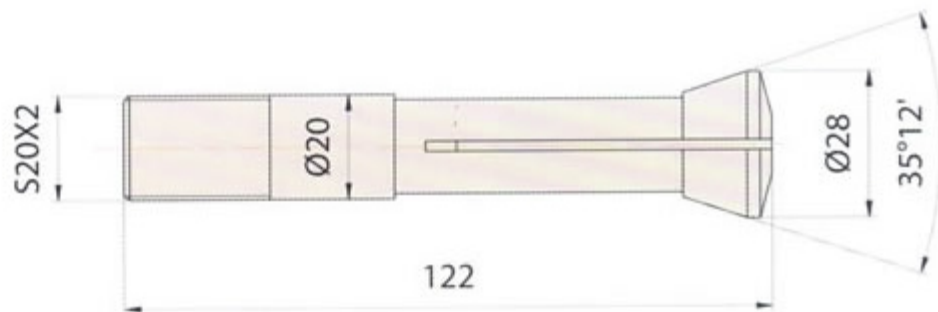
Model	D (mm)	d (mm)
7:24-30	31.75	Φ3-Φ20
7:24-40	44.45	Φ3-Φ25

FD020023 R8 collet



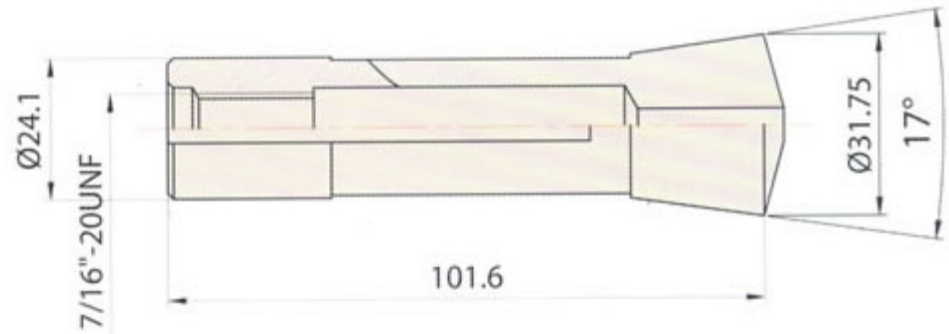
Type	Clamping range		Wt (kg)
Round	1mm-25mm	1/16"-1"	0.24
Emergency	1.5mm	1/16"	0.24

FD020024 Sharpener collet



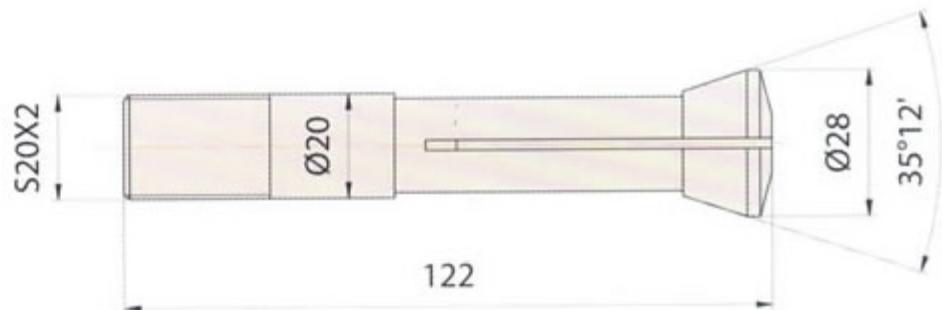
Type	Hole size		Wt (kg)
Round	3mm-16mm	1/8"-5/8"	0.21

## R8 collet



Type	Clamping range		Wt (kg)
Round	1mm-25mm	1/16"-1"	0.24
Emergency	1.5mm	1/16"	0.24

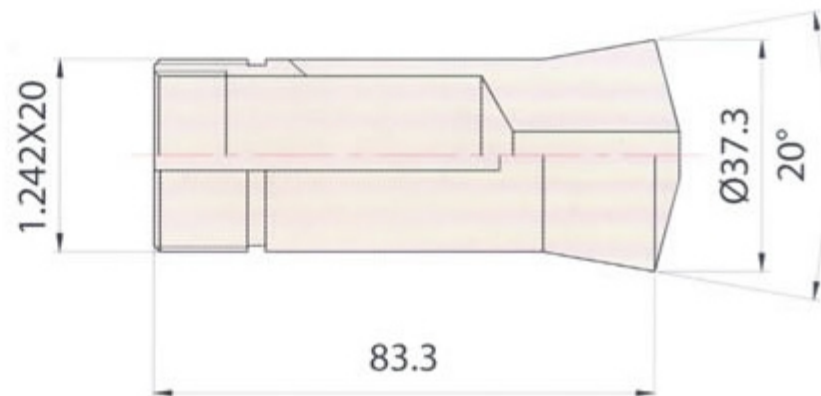
## FD020024 Sharpener collet



Type	Hole size		Wt (kg)
Round	3mm-16mm	1/8"-5/8"	0.21

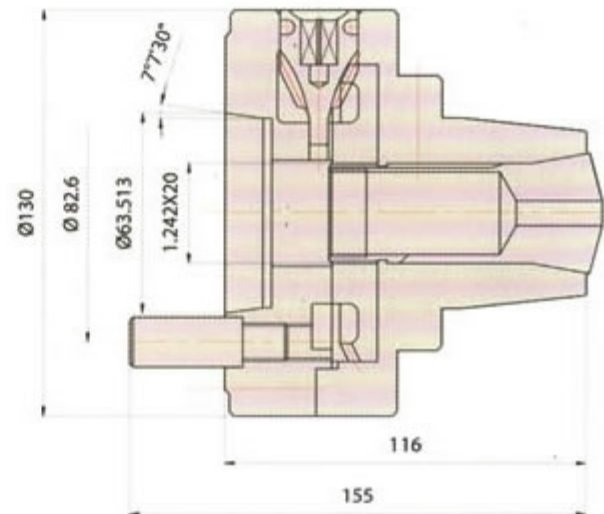


## 5C collet



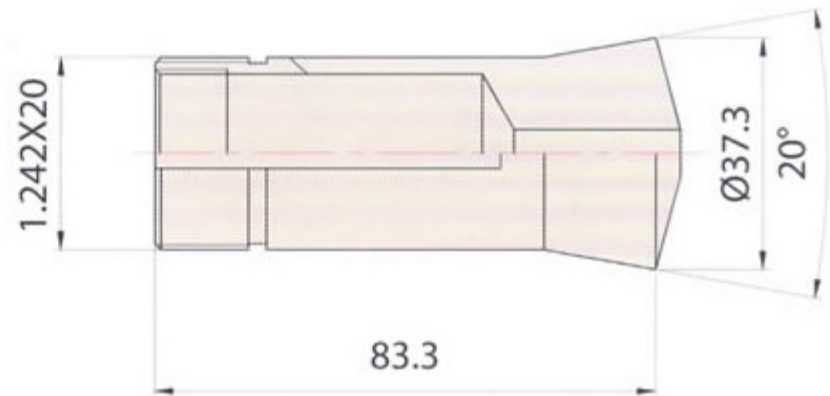
Type	Clamping range		Wt (kg)
Round	1mm-28mm	1/16"~1-1/8"	0.24
Emergency	1.5mm	1/16"	0.24

## FD020026 5C collet chuck



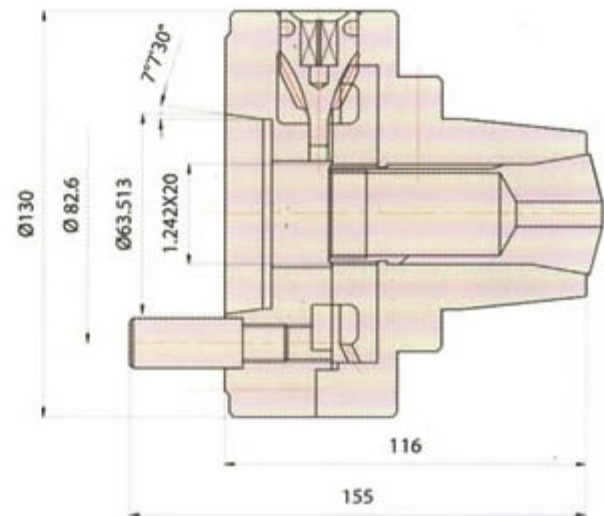
Type	Clamping range		
TJ5C TJ5C-D4	Round	1-28mm	3/64"~1-1/8"

## FD020025 5C collet



Type	Clamping range		Wt (kg)
Round	1mm-28mm	1/16"~1-1/8"	0.24
Emergency	1.5mm	1/16"	0.24

## FD020026 5C collet chuck



Type	Clamping range		
TJ5C TJ5C-D4	Round	1-28mm	3/64"~1-1/8"