

SHANDONG KEN STONE HEAVY MACHINERY CO., LTD

Shandong ken stone heavy machinery co., LTD. established in 1995, is one of China's leading manufacturers and seller of construction machinery and Engineering machinery. The business scope are in crawler excavator (0.8 ton - 21 ton), wheel excavator, backhoe loader. Annual production amount reach 30000 units. Company gets ISO management system certification. The brand name "XINIU" is honored as the Chinese well-known trademark. Now all the excavators are with CE certified.

Products are exported to whole European countries, Australia, New Zealand, USA, Canada, South America and South Africa etc..





0.8 T mini crawler excavator Windstorm XN10	
Machine Weight	800 Kg / 850 Kg
Bucket Capacity	0.025 m ³
Engine	KOOP 192
Power	12 HP
Track type	Rubber track
MAIN DEMENSIONS	
Ground clearance	380 mm
Chassis width	780mm / 930mm
Track width	180 mm
Track height	320mm
Transport length	2550 mm
Total height	1330 mm
OPERATING RANGE	
Unload height	1750 mm
Max. Vertical digging depth	1320 mm
Max. Digging height	2490 mm
Digging radius on ground	2400 mm
QUOTE	
Quotation : FOB QINGDAO USD 3800 /unit	
22 units can fit in 40GP Delivery time: Within 10 days	



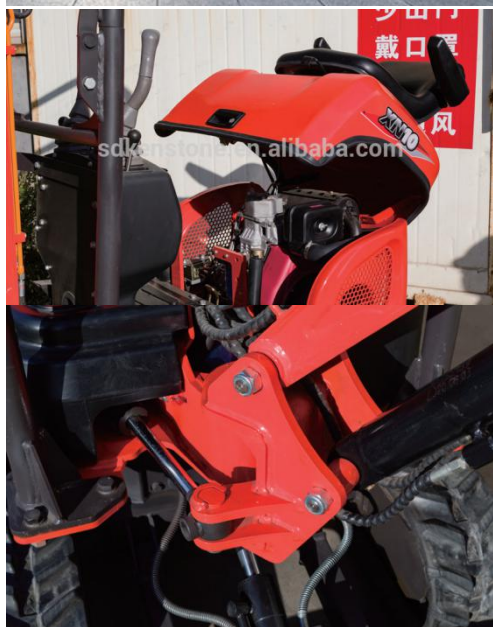
0.8 T mini crawler excavator XN08	
Machine Weight	880 Kg
Bucket Capacity	0.025 m ³
Engine	KOOP / CHANGCHAI
Rotated power	8.6 kw/1800r/min
Track type	Rubber track
MAIN DEMENSIONS	
Overall dimension(LxWxH)	1877x896x1990 mm
Wheelbase	770 mm
Chassis width	896 mm
Total length of track	960 mm
Track width	180 mm
Chassis ground clearance	132 mm
OPERATING RANGE	
Max. Digging depth	1650 mm
Max. Vertical digging depth	1376 mm
Max. Digging height	2365 mm
Max. Dumping height	1655 mm
QUOTE	
Quotation : Euro III configuration FOB QINGDAO USD 4300 /unit	
Euro V configuration FOB QINGDAO USD 4300 /unit	
22 units can fit in 40GP Delivery time: Within 10 days	

ADD: Dingyuanzhai Industrial Park, 18km east of liaocheng, Shandong Province, China.

Wechat : hecong9268

Mail:alisaexcavator@yaah.net sales8@sdxiniu.com

WhatsApp:008615865782223



1.0 T mini crawler excavator XN10—8	
Machine Weight	1000 Kg
Bucket Capacity	0.025 m ³
Engine	Changchai
Rotated power	7.5 kw/3000r/min
Track type	Rubber track
MAIN DEMENSIONS	
Overall dimension(LxWxH)	2850x954x2211 mm
Wheelbase	914 mm
Track height	320mm
Track width	180 mm
Boom swing left / right	363 mm / 325mm
OPERATING RANGE	
Max. Digging depth	1568 mm
Max. Vertical digging depth	1377mm
Max. Digging height	2646 mm
Max. Dumping height	1876 mm
Max. Digging radius on ground	3039 mm
QUOTE	
contain Swing boom andExtendable down chassis	
Koop engine Euro III configuration FOB QINGDAO USD 4500 /unit	
Kubota D722 engine Euro V configuration FOB QINGDAO USD6500 /unit	
22 units can fit in 40GP	Delivery time: Within 10 days

ADD: Dingyuanzhai Industrial Park, 18km east of liaocheng, Shandong Province, China.

Wechat : hecong9268

Mail:alisaexcavator@yaah.net sales8@sdxiniu.com

WhatsApp:008615865782223



1.0 T mini crawler excavator XN12	
Machine Weight	1080 Kg
Bucket Capacity	0.025 m ³
Engine	Yanmar 3TNV70
Rotated power	10 kw/2200r/min
Track type	Rubber track
MAIN DEMENSIONS	
Overall dimension(LxWxH)	2770x896x1490 mm
Wheelbase	910 mm
Chassis width	896 mm
Track width	130 mm
Chassis ground clearance	132 mm
OPERATING RANGE	
Max. Digging depth	1650 mm
Max. Vertical digging depth	1376 mm
Max. Digging height	2610 mm
Max. Dumping height	1850 mm
Max. Digging radius on ground	2850 mm
QUOTE	
Yanmar 370 engine Euro III configuration USD 6600 FOB QINGDAO /unit	
Yanmar 374F engine Euro V configuration (EPA) USD 6900 FOB QINGDAO /unit	
Kubota D722 engine Euro V configuration (EPA) USD 6300 FOB QINGDAO /unit	
22 units can fit in 40GP Delivery time: Within 10 days	

ADD: Dingyuanzhai Industrial Park, 18km east of liaocheng, Shandong Province, China.

Wechat : hecong9268

Mail:alisaexcavator@yaah.net sales8@sdxiniu.com

WhatsApp:008615865782223



1.5 T mini crawler excavator XN16	
Machine Weight	1550 Kg
Bucket Capacity	0.045 m ³
Engine	Yanmar 3TNV70
Rotated power	10 kw/2200r/min
Track type	Rubber track
MAIN DEMENSIONS	
Overall dimension(LxWxH)	3160x1040x2377 mm
Platform ground clearance	437 mm
Platform back turning radius	740 mm
Chassis width	1040 mm
Track width	180 mm
Chassis ground clearance	132 mm
OPERATING RANGE	
Max. Digging depth	2150 mm
Max. Vertical digging depth	1740 mm
Max. Digging height	3275 mm
Max. Dumping height	2310 mm
QUOTE	
Yanmar 370 engine Euro III configuration USD9500 FOB QINGDAO /unit	
Yanmar 374F engine Euro V configuration (EPA) USD 9800 FOB QINGDAO /unit	
10-12 units can fit in 40GP	Delivery time: Within 10 days

ADD: Dingyuanzhai Industrial Park, 18km east of liaocheng, Shandong Province, China.

Wechat : hecong9268

Mail:alisaexcavator@yaah.net sales8@sdxiniu.com

WhatsApp:008615865782223



1.7 T mini crawler excavator XN18	
Machine Weight	1700 Kg
Bucket Capacity	0.045 m ³
Engine	Yanmar 3TNV70
Rotated power	10 kw/2200r/min
Track type	Rubber track
MAIN DEMENSIONS	
Overall dimension(LxWxH)	3160x1040x2377 mm
Platform ground clearance	437 mm
Platform back turning radius	790 mm
Chassis width	1100 mm
Track width	230mm
Transportation length	3160 mm
OPERATING RANGE	
Max. Digging depth	2150 mm
Max. Vertical digging depth	1740 mm
Max. Digging height	3275 mm
Max. Dumping height	2310 mm
QUOTE	
Yanmar 370 engine Euro III configuration USD 11300 FOB QINGDAO /unit	
Yanmar 374F engine Euro V configuration EPAUSD 11600 FOB QINGDAO /unit	
10-12 units can fit in 40GP	Delivery time: Within 15 days

ADD: Dingyuanzhai Industrial Park, 18km east of liaocheng, Shandong Province, China.

Wechat : hecong9268

Mail:alisaexcavator@yaah.net sales8@sdxiniu.com

WhatsApp:008615865782223



1.9 T mini crawler excavator XN20	
Machine Weight	1880 Kg
Bucket Capacity	0.045 m ³
Engine	Yanmar 3TNV70
Rotated power	10 kw/2200r/min
Track type	Rubber / Steel track
MAIN DEMENSIONS	
Overall dimension(LxWxH)	3400 x (990-1240) x 2350mm
Total length of track on land	1590 mm
Platform ground clearance	473 mm
Platform back turning radius	740 mm
Chassis width	990 mm(retract)/1240mm(extended)
Track width	230 mm
OPERATING RANGE	
Max. Digging depth	2150 mm
Max. Vertical digging depth	1740 mm
Max. Digging height	3275 mm
Max. Dumping height	2310 mm
Max. Digging radius on ground	3470mm
QUOTE	
Yanmar 370 engine Euro III configuration USD 14600 FOB QINGDAO /unit Yanmar 374F engine Euro V configuration EPAUSD14900 FOB QINGDAO /unit	
10 units can fit in 40GP	Delivery time: Within 15 days

ADD: Dingyuanzhai Industrial Park, 18km east of liaocheng, Shandong Province, China.

Wechat : hecong9268

Mail:alisaexcavator@yaah.net sales8@sdxiniu.com

WhatsApp:008615865782223



2.7 T mini crawler excavator XN28

Machine Weight	2640 Kg
Bucket Capacity	0.05 m ³
Engine	Yanmar 3TNV80
Rotated power	14.6 kw/2400r/min
Track type	Rubber track
MAIN DEMENSIONS	
Overall dimension(LxWxH)	3918 x 1454 x 2469 mm
Total length of track on land	1892 mm
Upper chassis ground clearance	535 mm
Counterweight turning radius	885 mm
Track height	455mm
Track width	250 mm
OPERATING RANGE	
Max. Digging depth	2396 mm
Max. Vertical digging depth	2093 mm
Max. Digging height	4153 mm
Max. Dumping height	2909 mm
Max. Digging radius on ground	4168mm
QUOTE	
Quotation: FOB QINGDAO USD 17500 /unit	
8 units can fit in 40GP	Delivery time: Within 15 days

ADD: Dingyuanzhai Industrial Park, 18km east of liaocheng, Shandong Province, China.

Wechat : hecong9268

Mail:alisaexcavator@yaah.net sales8@sdxiniu.com

WhatsApp:008615865782223



7.0 T mini crawler excavator XN80-E	
Machine Weight	6810 Kg
Bucket Capacity	0.3 m ³
Engine	Yanmar
Rotated power	33.7 kw/2100r/min 44 kw/2200r/min
Track type	Steel track
MAIN DEMENSIONS	
Total length of track on land	2750 mm
Platform ground clearance	720 mm
Platform back turning radius	1570 mm
Chassis width	2150mm
Track width	400 mm
OPERATING RANGE	
Max. Digging depth	3440 mm
Max. Vertical digging depth	3190 mm
Max. Digging height	6220 mm
Max. Dumping height	4540 mm
Max. Digging radius on ground	6140mm
QUOTE	
Rexroth hydraulic system FOB Qingdao USD 31700 / unit	
jingken hydraulic system FOB Qingdao USD 30200 / unit	
2 units can fit in 40HQ	Delivery time: Within 15 days

ADD: Dingyuanzhai Industrial Park, 18km east of liaocheng, Shandong Province, China.

Wechat : hecong9268

Mail:alisaexcavator@yaah.net sales8@sdxinu.com

WhatsApp:008615865782223



8.5 T mini wheel - crawler excavator X9	
Machine Weight	8530 Kg
Bucket Capacity	0.3 m ³
Engine	Yanmar
Rotated power	33.7 kw/2100r/min
Track type	Tire / Steel track
MAIN DEMENSIONS	
Tire width	2120 mm
Counter weight turning radius	1836 mm
Counter weight ground clearance	1120mm
Track outer width	2160mm
Track width	400 mm
OPERATING RANGE	
Max. Digging depth	3752mm
Max. Vertical digging depth	3255 mm
Max. Digging height	6955 mm
Max. Dumping height	5245 mm
Max. Digging radius on ground	6555mm
QUOTE	
Quotation	FOB QINGDAO USD 38500 / unit
2 units can fit in 40HQ	Delivery time: Within 15 days

ADD: Dingyuanzhai Industrial Park, 18km east of liaocheng, Shandong Province, China.

Wechat : hecong9268

Mail:alisaexcavator@yaah.net sales8@sdxiniu.com

WhatsApp:008615865782223



8.0 T mini wheel excavator XN85-9	
Machine Weight	7700 Kg
Bucket Capacity	0.3 m ³
Engine	XN85-9X xinchai XN85-9Y Yanmer
Rotated power	60 kw/2200r/min
Track type	Tire track
MAIN DEMENSIONS	
Tire width	2130 mm
Counter weight ground clearance	1070 mm
Wheel tread	2400mm
Overall width of blade	470 mm
OPERATING RANGE	
Max. Digging depth	3200 / 3635mm
Max. Vertical digging depth	2912 / 3325 mm
Max. Digging height	6820 / 7105mm
Max. Dumping height	4935 / 5230 mm
Maximum vertical digging depth	2912 / 3325mm
QUOTE	
XN85-9X FOB QINGDAO USD 28500 / unit	
2 units can fit in 40HQ	Delivery time: Within 15 days

ADD: Dingyuanzhai Industrial Park, 18km east of liaocheng, Shandong Province, China.

Wechat : hecong9268

Mail:alisaexcavator@yaah.net sales8@sdxiniu.com

WhatsApp:008615865782223



8.0 T mini wheel excavator XN90-Y	
Machine Weight	8300 Kg
Bucket Capacity	0.3 m ³
Engine	Yanmer
Rotated power	44 kw/2200r/min
Track type	Tire track
MAIN DEMENSIONS	
Tire width	2130 mm
Counter weight ground clearance	1070 mm
Wheel tread	2400mm
Overall width of blade	2138mm
OPERATING RANGE	
Working device	Boom 3.3m+Bucket arm 1.75m Boom 3.5m+Bucket arm 2.00m
Max. Garb radius	5808 / 6272 mm
Max. Garb depth	3376 / 3789mm
Max. Dumping height	4677 / 4972 mm
Min.Turning radius	2177 / 2334mm
QUOTE	
Quotation	
FOB QINGDAO USD 31900 / unit	
2 units can fit in 40HQ	Delivery time: Within 15 days

ADD: Dingyuanzhai Industrial Park, 18km east of liaocheng, Shandong Province, China.

Wechat : hecong9268

Mail:alisaexcavator@yaah.net sales8@sdxiniu.com

WhatsApp:008615865782223



7.5 T mini wheel excavator XN85L	
Machine Weight	7480 Kg
Bucket Capacity	0.3 m ³
Engine	Yanmar
Rotated power	44kw/2200r/min
Track type	Tire track
MAIN DEMENSIONS	
Tire width	2090 mm
Counter weight ground clearance	1090 mm
Wheel tread	2260mm
Overall width of blade	2080mm
OPERATING RANGE	
Max. Digging depth	3330mm
Max. Vertical digging depth	3055 mm
Max. Digging height	6820mm
Max. Dumping height	4945 mm
Maximum vertical digging depth	3055mm
QUOTE	
XN85L FOB QINGDAO USD 31700 /unit	
2 units can fit in 40HQ	Delivery time: Within 15 days

ADD: Dingyuanzhai Industrial Park, 18km east of liaocheng, Shandong Province, China.

Wechat : hecong9268

Mail:alisaexcavator@yaah.net sales8@sdxiniu.com

WhatsApp:008615865782223