



扫描二维码 VRAR



地址：山东省聊城市冠县工业园苏州路6号
电话（传真）：0635-5100059
邮箱：bill@lchengfeng.com
网址：www.lchengfeng.com
销售电话：15206355581

ADD: Industrial Park, Guanxian, Shandong, China
Tel (Fax): 86-0635-5100059
Email: bill@lchengfeng.com
Website: www.luhengfeng.com
Sales Dept: 86-15206355581

山东·恒丰
www.lchengfeng.com



山东恒丰集团成立于2012年，下属公司有：山东冠县江丰公路养护有限公司、山东景县金属制品有限公司、山东聊城金旺进出口有限公司、山东恒丰复合材料有限公司。恒丰集团是一家集钢板、高速公路护栏板的研发、生产、购销、出口于一体的新型现代化民营企业。公司主要产品有镀锌板、彩涂板、镀锌锌硅板、瓦楞板、高速公路护栏板、立柱等。公司位于山东省聊城市，公司注册资金6000万元，占地120余亩，建筑面积45000平方米，员工300余人，是聊城市重点规模企业。

公司硬件设施齐全，设备选型精良，工艺先进，检测手段齐全，拥有目前国内最先进的生产线。公司拥有雄厚的技术力量，现有中高级工程师，专业技术人才30名，专业出口贸易业务，拥有超过10年的进出口贸易经验。公司产品制造工艺精湛，生产高精度的优质产品，目前公司年产能45万吨。产品通过了ISO9001国际质量管理体系认证并取得了国家交通管理部门颁发的批量生产合格证书和检测报告，近年来，公司与国内外客户建立了稳定的业务关系，产品已出口到90多个国家，赢得了国际信誉。

公司成立以来，被山东省工商局授予“守合同重信用”企业，“山东省第五届消费者满意单位”，山东省工商联授予“最具发展潜力民营企业”，市、县政府授予“先进民营企业”、市政协企业家协会会长企业、交通设施商会会长企业。

公司以创新为灵魂，以质量为基础，秉承“成就客户价值，引领技术潮流”的使命和“诚实守信、创新求实、合作共赢、追求卓越”的核心价值观，持续改进生产工艺，严格执行标准化管理，积极广泛拓展国内外业务渠道，打造恒丰品牌。



Shandong Hengfeng Group was established in 2012. Its subsidiaries include: Shandong Guanxian Jiangfeng Highway Maintenance Co., Ltd., Shandong Jingchen Metal Products Co., Ltd., Shandong Liaocheng Jinwang Import and Export Co., Ltd., Shandong Hengfeng Composite Materials Co., Ltd. Hengfeng Group is a new modern private enterprise integrating R & D, production, purchase, sales and export of steel plates and highway guardrail. The company's main products include galvanized sheet, color-coated sheet, aluminized zinc-silicon sheet, corrugated sheet, highway guardrail, post, etc. The company is located in Liaocheng, Shandong, with a registered capital of 60 million yuan, an area of more than 120 acres, a construction area of 45,000 square meters, and more than 300 employees. It is a key large-scale enterprise in Liaocheng.

The company has complete hardware facilities, sophisticated equipment selection, advanced technology, complete testing methods, and has the most advanced production line in China. The company has strong technical force, and now has 30 senior engineers, professional and technical personnel, professional export trade business, and has more than 10 years of import and export trade experience. The company's product manufacturing process chain is complete, producing high-precision and high-quality products. At present, the company's annual production capacity is 450,000 tons. The products have passed the ISO9001 international quality management system certification and obtained the mass production certificate and test report issued by the national transportation department. In recent years, the company has established stable business relations with domestic and foreign customers, and the products have been exported to more than 90 countries. Has won international credibility.

Since the establishment of the company, it has been awarded by the Shandong Provincial Administration for Industry and Commerce as a "contract-strengthening and trustworthy" enterprise, "the fifth consumer satisfaction unit in Shandong Province", the Shandong Provincial Federation of Industry and Commerce awarded the "private enterprise with the most development potential", and the city and county government "Advanced private enterprise", the chairman of the CPCCC Entrepreneurs Association, and the chairman of the Transportation Facilities Chamber of Commerce.

Taking innovation as the soul and quality as the foundation, the company adheres to the mission of "achieving customer value and leading the trend of technology" and the core values of "honesty and trustworthiness, innovation and pragmatism, win-win cooperation, and pursuit of excellence". It continuously improves the production process and strictly implements standardization Management, actively and extensively expand domestic and foreign business channels, and build Hengfeng brand.





山东恒丰集团

山东恒丰集团



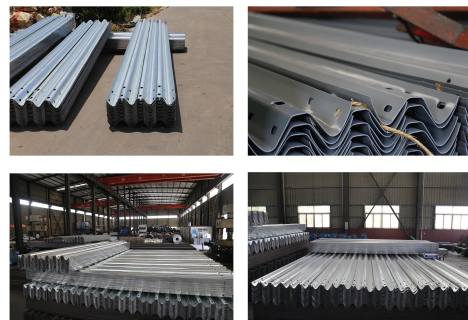
G 镀锌波形护栏 galvanized Beam Guardrail



热镀锌钢护栏板和立柱主要用于国内外高速公路和一级公路上的安全防护。国内采用Q235材质，国外采用Q345材质。钢板通过冷弯成型再镀锌、静电喷涂加工而成。耐腐蚀性强，光亮美观，防撞强度高均达到交通部标准。

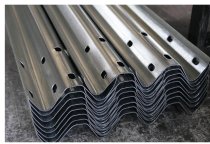
Hot-dip galvanized steel guardrail and posts are mainly used for safety protection on highways and first-class highways at home and abroad. Q235 material is used domestically, and Q345 material is used abroad. The steel plate is formed by cold bending and then galvanized and electrostatically sprayed. It has strong corrosion resistance, bright and beautiful appearance, and high anti-collision strength, which meets the standards of the Ministry of Communications.

山东恒丰集团



| | |
|------------------------|--|
| 名称 Name | 高速公路护栏 Highway Guardrail |
| 材质 Material | Q235/Q345 |
| 表面处理 Surface Treatment | 热镀锌 (Hot Dipped Galvanized) / 喷塑 (Color Coated) |
| 锌层 Zinc Coating | 350-1220g/m ² |
| 规格 Specification | 长度 L: 4320/4130mm |
| | 厚度 T: 2.5mm-4mm |
| | 宽度 W: 310-315mm (W Beam) 506mm (Thrie Beam) |
| 标准 Standard | 波高 wave height: 81-85mm |
| | 国标 (National Standard), 美标 (American Standard), 欧标 (European standard) |
| 产能 Capacity | 100, 000 metric tons per year |

山东恒丰集团



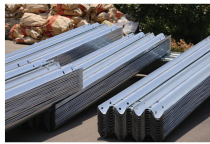
双波护栏 W Beam Guardrail



双波护栏 W Beam Guardrail



双波护栏 W Beam Guardrail



双波护栏 W Beam Guardrail



三波护栏 Thrie Beam Guardrail



三波护栏 Thrie Beam Guardrail



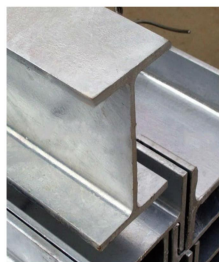
喷塑护栏板
Color Coated Guardrail

喷塑护栏板采用重防腐处理，内部涂层为热镀锌层，表面涂层是选用全聚酯粉末涂料，采用静电喷涂方式使其与基体牢固地结为一体。具有较强的吸收碰撞能量的能力，具有较好的视线诱导功能。

The sprayed plastic guardrail adopts heavy anti-corrosion treatment, the internal coating is hot-dip galvanized layer, and the surface coating is made of all-polyester powder coating, which is firmly integrated with the substrate by electrostatic spraying. It has a strong ability to absorb collision energy and has a good sight-inducing function.



U型立柱 U Post



H型立柱 H Post



方型立柱 Square Post



C型立柱 C post



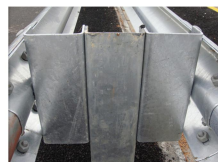
圆型立柱 Round Post



端头 Terminal End



防阻块 Spacer



u型防阻块 U Spacer



轮廓标 Reflector



螺栓 bolt and nut



柱帽 post cap



2台W型轧型机，
1台三波轧型机，
4台折弯机和切割机。
1套全自动热镀锌生产线。1套挂镀锌线。
每台机器12小时内可生产1500件

2 sets W-beam roll forming machine
1 set Thrie-beam roll forming machine
4 sets bending machines and cutting machine
1 set fully automatic hot dipped galvanized line, 1 set hang galvanized line.
1500pieces output by one set machine within 12 hours.

山东恒丰集团

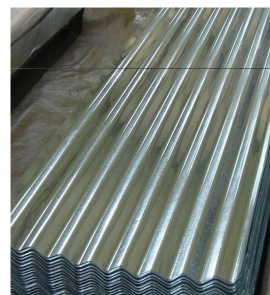
山东恒丰集团



镀锌瓦楞板
Corrugated Sheet



| | |
|------------------------|--|
| 名称 Name | 瓦楞板 Corrugated Sheet |
| 厚度 Thickness | 0.13-0.8mm (BWG/AWG) |
| 宽度 Width | 压前宽度 Before Pressing 762-1250mm |
| | 压后宽度 After Pressing 600-1000mm |
| 锌层 Zinc Coating | 30-275g/m ² |
| 表面处理 Surface Treatment | 钝化/无钝化 (Chromated/Non-Chromated) 涂油/不涂油 (Oiled/Non-Oiled) 光整 (Skin Pass) |
| 表面结构 Surface Structure | 常规锌花 (Regular Spangle) 大锌花 (Big Spangle) 小锌花 (Minimum Spangle) 零锌花 (Zero Spangle) |



山东恒丰集团

山东恒丰集团



H 镀锌钢卷 Hot dipped steel coil

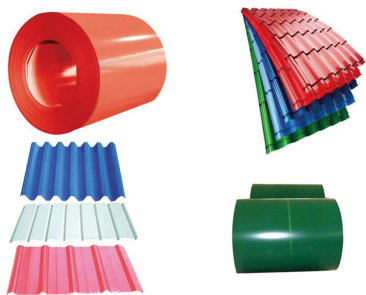


| | |
|------------------------|---|
| 牌号 Grade | SGCC /SGCH/G550/G350 |
| 厚度 Thickness | 0.12-1.0mm |
| 宽度 Width | 30-1250mm |
| 锌层 Zinc Coating | Z30-275g/m ² |
| 表面处理 Surface Treatment | 轻油 (light oil) 涂油 (oil) 干燥 (dry) 钝化 (chromate) 耐指纹 (passivated anti finger) |
| 表面结构 Surface Structure | 常规锌花 Regular Spangle |
| 卷重 Coil Weight | 3-10tons |
| 卷径 Coil ID | 508/610mm |



山东恒丰集团

山东恒丰集团



www.luhengfeng.com



www.lchengfeng.com

抖音 抖音扫一扫



山东恒丰集团
地址: 山东省临沂市兰山区
电话: 0539-8200000

恒丰官方抖音

彩色涂层钢板是近年来国际市场上迅速兴起的新型建材。在连续化组上经化学处理、初涂、精涂等工艺精制而成。涂装质量远比成型金属表面进行单件喷涂或刷涂的质量更均匀、更稳定、更理想。彩色涂层钢板具有优异的装饰性、成型性、抗腐蚀性、涂层附着力强,可以长期保持色泽新颖。由于彩色涂层钢板能取代木,高效施工、节约能源、防止污染等良好的经济效果,成为当今制造建筑板材的理想材料

The color-coated steel plate has excellent decoration, formability, corrosion resistance, strong coating adhesion, and can maintain novel color for a long time. Because color-coated steel plate can replace wood, it has good economic effects such as high-efficiency construction, energy saving, pollution prevention, it has become an ideal construction material nowadays.

山东恒丰集团

山东恒丰集团