

X7 SERIES MANUAL LIGHT TOWER



**LOW
NOISE**



**LOW FUEL
CONSUMPTION**



**LOW FAILURE
RATE**



Kubota

► Manual Light Tower

X7-RX1200 diesel light tower is subcompact type manual vertical light tower with 7m manual light mast. It is applied in road, construction and mining, etc. It is powered by Japan Kubota engine and Italy Mecc Alte alternator, with 4*300W customized LED. The customized LED are installed under light mounting tubes, it will save 30cm height when transportation. Especially in the countries are limited in transportation height, it is good choice. On the other hand, LED angle adjustment can be adjusted by light mounting tubes, it also can be adjusted individually, 360° rotation and 90° tilt, it will meet different lighting range request for different users. It is economic, super compact designed with super smaller size for transportation, it can be loaded up to 23 sets in a 40' high cube to save more transportation cost as sea freight increasing crazily. This model is the most economic type and will bring you good lighting solution. If you consider energy consumption and small floor area, X7-RX1200 would be great choice with competitive price.

**LIGHTING WHERE
YOU NEED
POWER YOU
WHEN
NEED**



HIGHLIGHT FEATURES



4*300W LED
176,000 Lumens

360° rotation &
90° tilt manually



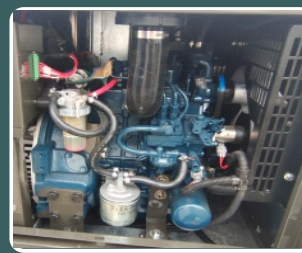
7 meters
Maximum height
Hot galvanizing

Manual
Lifting system



"I" style towing frame
with support wheel

1 front, 1 rear & 2
side stabilizing legs



Japan Kubota engine with Italy Mecc Alte alternator

TEXAS SERIES X7 LIGHT TOWER



Standard Model		X7-RX1200	
Dimensions	Length	2,390mm (7'10")	
	Length for loading	815mm (2'8")	
	Width	1,410mm (4'7½")	
	Height	2,350mm (7'8½")	
	Height for loading	2,350mm (7'8½")	
	Height extended fully	6.7 m (22')	
	Gross weight	600 kg (1,323 lb)	
Generator & Engine	Engine model	Z482-B-CHN-1 Kubota	Z482-E4B-CHN-1 Kubota
	Engine speed(rpm)	1,500/ 1,800	3,600
	Engine characters	2 cylinders, 4 cycles & Water cooling	
	Combustion & Aspiration	IDI & naturally aspirated	
	Alternator model	LT3N-75/4 Mecc alte	LT3N-100/2 Mecc alte
	Frequency (HZ)	50HZ/ 60HZ	60HZ
	Voltage	220/ 230/ 240-120 VAC	240/120VAC
	Alternator insulation & IP	Class H & IP23	
	Fuel tank	80 liters (21 US gal) Metal Sheet	
	Operating hours with full fuel	168 hours	
	Control system	Grandwatt Controler	
	Power receptacle	1 pcs US standard 20A	
	Max. acoustic pressure	65 dB(A) at 7 meters away	
Mast & Lights	Light	4*300 W customized LED	
	Luminous flux	176,000 Lm	
	Mast sections	5	
	Mast extension	2,500 lb winch	
	Lighting direction	90° for 2 light mounting tubes, 360° rotation and 90° tilt	
	Light tilt	Manual	
Trailer	Suspension & brake	750 kg leafspring axle without brake	
	Stabilizing legs	4 jacks, 1 front, 1 rear & 2 side	
	Forklift slots	4 sides forklift slots with lifting holes	
	Wheels	12" rim with regular tire	
	Tow Coupler	2" ball coupler	
	Tail lights	Multiple tail lights with 4 flat plug & wiring	
	Max. against wind	20m/s (45 mph)	
	Max towing speed	100 km/h (62 mph)	
Max. load in 40' HC container		23	