

全液压挖掘机

Hydraulic Excavator

D760-8



- 反铲整机重量 Operating Weight for Backhoe: 73.2-75.4t
- 正铲整机重量 Operating Weight for Face-shovel: 77.6-79.8t
- 电动机功率/转速: Electromotor Power/Speed: 355kW/1485rpm
- 反铲斗容范围 Capacity Range for Backhoe: 3.0-4.5m³
- 正铲斗容范围 Capacity Range for Face-shovel: 3.5-5.0m³

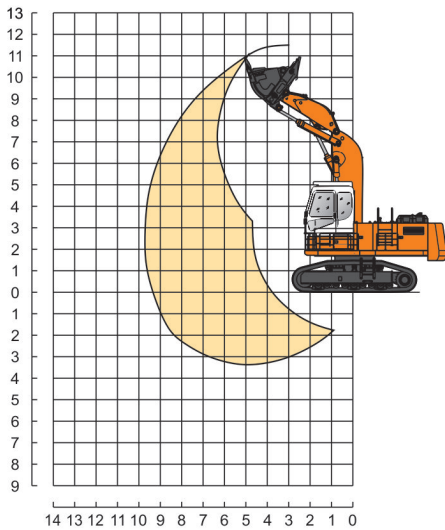
D760-8

产品性能参数

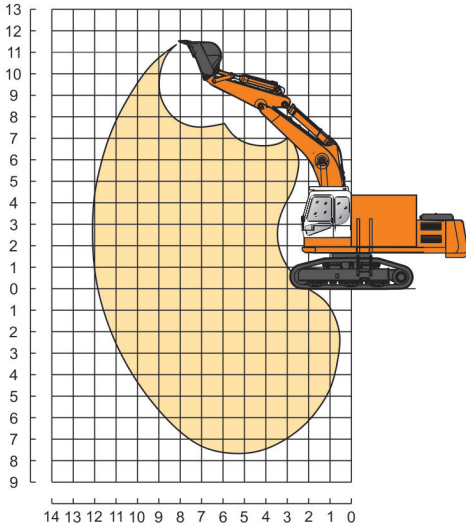
Performance Data

- 发动机排放符合当今最新环保要求。
Engine emissions conform to latest environmental regulations.
- 液压元件选用世界著名品牌配置。
Equipped with world famous brand hydraulic components.
- 另可选用电动型或双动力型液压挖掘机，具有环保零排放、低成本运行、高环境温度适应、低维护保养成本等独特优势。
Excavator can be equipped with electric motor, or both with diesel engine and electric motor for zero-emission, low operation & maintenance costs.

Face-shovel Attachment



Backhoe Attachment



作业范围 Operating range	正铲 (mm) Face shovel	反铲 (mm) Backhoe
最大作业半径 Max. digging reach	9778	12036
最大挖掘深度 Max. digging depth	3238	7389
最大挖掘高度 Max. digging height	11149	11578
最大卸载高度 Max. dumping height	8037	7684
斗杆最大挖掘力 Max. digging force of Stick	410	364/334
铲斗最大挖掘力 Max. breakout force of Bucket	410	326/356

电动机 Electromotor

型号	YJK4002-4
Model	YJK4002-4
类型	高压三相异步电动机
Type	High Voltage, three phases, asynchronous electromotor
额定功率/转速	355kW/1485rpm
Rated power/speed	355kW/1485rpm
电压	6kV/10kV
Voltage	6kV/10kV
频率	50Hz
Frequency	50Hz
电缆	3x10+1x10
Cable	3x10+1x10

液压系统 Hydraulic System

类型	二泵二回路极限载荷+闭式回转
Type	Limit load control with two-pump & two-circuits + closed swing system
主泵型式	柱塞变量泵
Main pump	Piston variable pump
最大流量	2x559+387L/min
Max. flow	2x559+387L/min
最大工作压力	31.4/34Mpa
Max. operation pressure	31.4/34Mpa
回转泵型式	柱塞变量泵
Swing pump	Piston variable pump
最大流量	1x387L/min
Max. flow	1x387L/min
最大工作压力	30Mpa
Max. Operation pressure	30Mpa
作业循环时间	20s
Cycling time of working	20s

回转系统 Swing System

形式	独立闭式回转系统
Type	Independent, closed swing system
回转马达	1 × 轴向柱塞式变量马达
Swing motor	1 × axial plunger motor with constant displacement
减速机构	二级行星齿轮减速
Speed reduction unit	Grade two planet gear reduction
回转制动	常闭式湿式多盘制动器
Swing brake	Normal closed, wet multi-brake
回转支承	单排球回转支承
Swing ring	Single row of balls
回转速度	6.5rpm
Swing speed	6.5rpm

行走部分 Undercarrige

行走马达	2 × 轴向柱塞式定量马达
Travel motor	2 × axial plunger motor with constant displacement
行走、转向控制	带操纵杆的脚踏板控制
Travel & turning control	Foot pedal control with operating rod
减速机构	三级行星齿轮减速
Speed reduction unit	3-stage planet gear reduction
行走制动	常闭式湿式多盘制动器
Travel brake	Normal closed, wet multi-disc brake
行走速度	3.8km/h
Travel speed	3.8km/h
最大牵引力	496kN
Max. pulling force	496kN
爬坡能力	最大 35° (70%)
Grade ability	Max. 35° (70%)
下车型式	H型、可分解式
Undercarriage type	Disassembled H structure

油、脂、液容量 Capacity of Oil, Grease and Fluid

液压油箱	790L
Hydraulic oil tank	790L
液压系统 (总)	920L
Hydraulic system, total	920L