



# S16/S22 Drone agriculture sprayer

Electric & Hybrid

# Drone overview

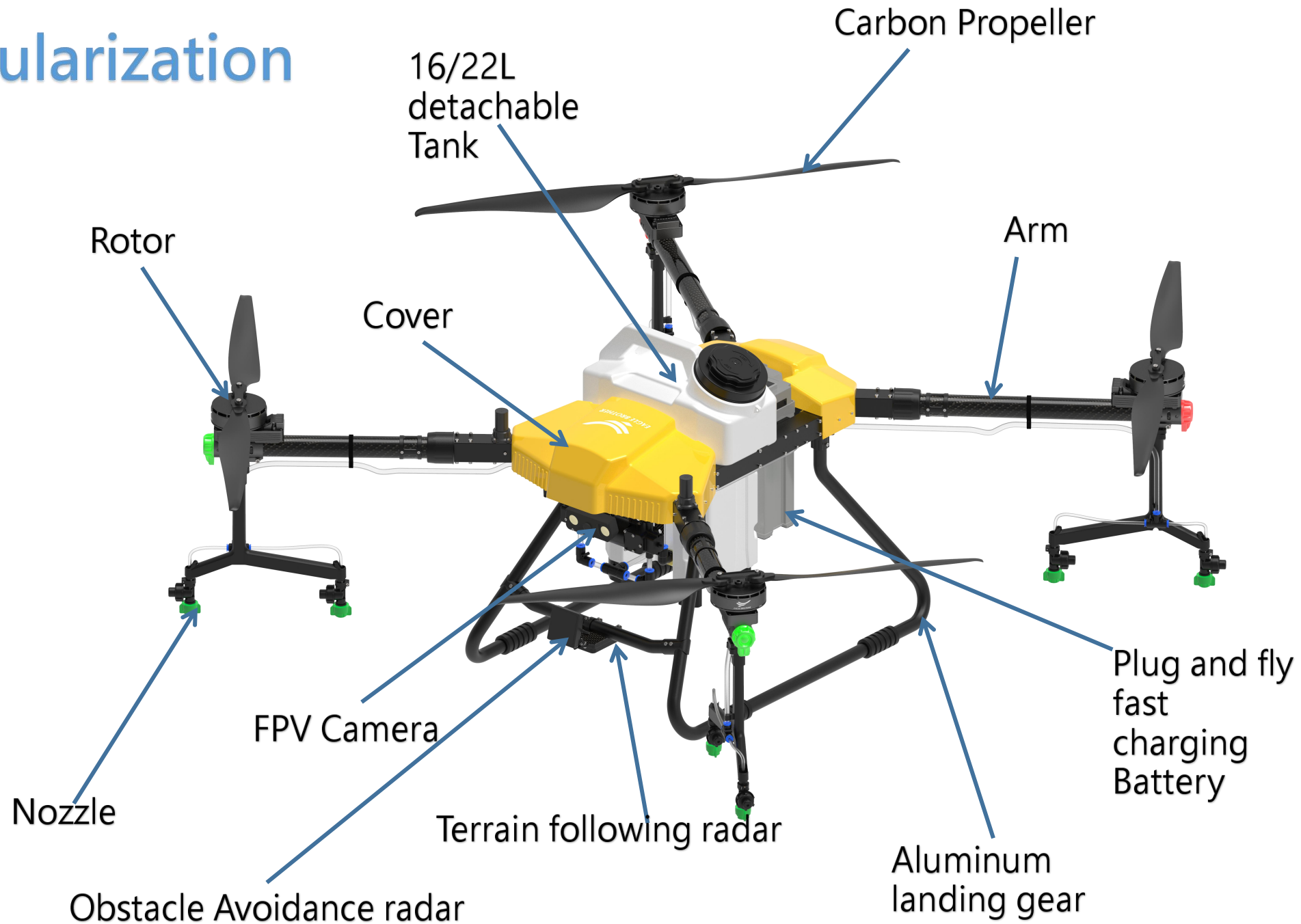


Unfold



Folded

# Modularization



# Specification

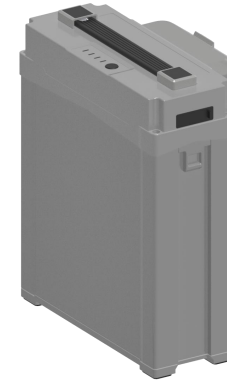


Model:	S16/S22
Operation size	2640*2150*650mm
Folded size	800*850*650mm
Capacity	16L/22L
Spray width	4-6m
Flight duration	10-22min (Electric) 30-45min(Hybrid)
Flowrate	1.8-2.5L
Speed	2-10m/s
Efficiency	6-8ha/day
Battery(Electric)	1900mAh 51.8v 14S
Battery(Hybrid)	5750mAh 51.8 14S
Operation mode	Autopilot/AB point/Manual



# Key Features

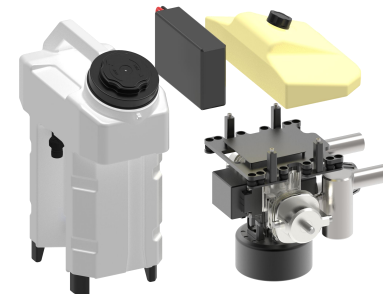
<b>Detachable tank</b> <b>Plug and fly, fast</b> <b>charging battery</b>	<b>Nozzle optional</b>
<b>Terrain Following</b> <b>Radar /Obstacle</b> <b>Avoidance Radar</b> <b>/FPV camera</b>	<b>Metal frame,</b> <b>metal connectors,</b> <b>strong and durable</b>
<b>Autopilot/AB</b> <b>Point/Manual</b>	<b>Mobile App/ Cloud</b> <b>platform</b>



Intelligent Quick  
charging battery



Pressure nozzle  
& centrifugal  
nozzle optional



Detachable tank  
+ Engine

# Accessories



Drone



Detachable Tank  
Intelligent fast charging  
battery



Battery



Charger



Remote Control



RTK station

# Remote Control

Size:	190*152*94mm
Power	4.2V
Channel	12
Weight	530g
Frequency	2.4-2.483Ghz
Duration time	6-12hours
Battery	10000mA/H
Update	APP online update
Charging interface	Type-C
RF power	20DB@ce/23DB@FCC



# Smart Charging system



19000mah, 14S,  
Intelligent fast charging Battery



Intelligent balance charger  
U6Q, 4 ports, 2400Wats.



Cloud station



Position collector

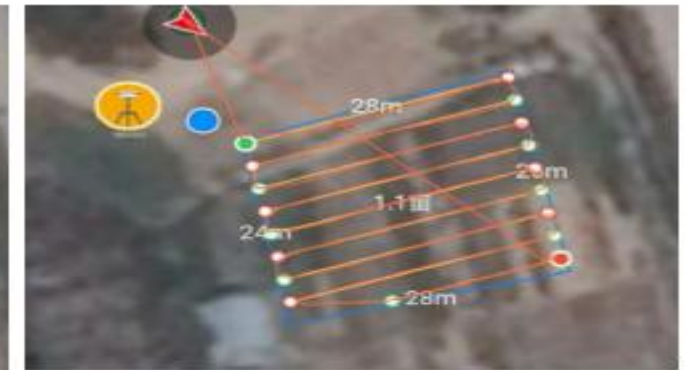
Precision Agriculture need Accurate Spray work

- Measurement accuracy: Centimeter level.
- High sensitivity, low power consumption.
- Double antenna orientation
- 1 Control simultaneous operation on 3 aircrafts
- Transmission range: 3km.

GPS positioning  
Error range: 3-30metres



RTK positioning  
Error range < 0.1metres



**RTK remarkably increase the spray efficiency, guarantee to spray in time without overlap and misses, and contributes to obstacle avoidance.**



# Electric Version





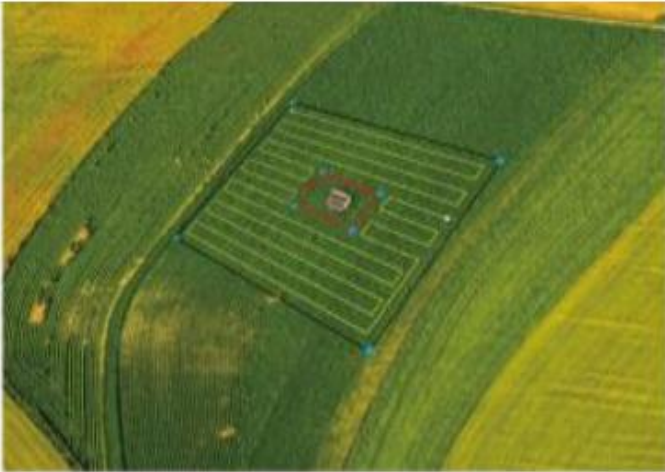
# Hybrid Version



# Operation modes

- **3 Operation Mode**

To choose different operate mode depend on the different terrain shape.



Autopilot



AB Point



Manual

- **Cloud platform**

It is convenient for operator statistics and supervision, supports electronic fence, no-fly zone setting and remote lock function, real-time view of plant protection progress, work area, team and equipment distribution, and comprehensive tracking of equipment use status.





# Multi-application

