



OPzS-600

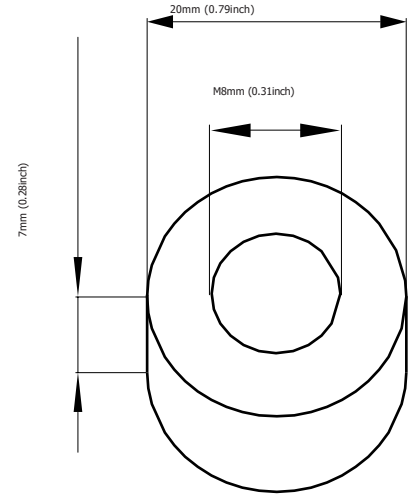
GREENSAVER OPzS batteries are designed with a combination of die-casting Tubular positive framework and superfluous electrolyte technologies to offer a very high lever of reliability and a long service life.

GREENSAVER OPzS batteries used special filter and proof design to ensure no acid fog runs over and burning proof, and also convenient examine and maintenance.

GREENSAVER OPzS batteries make if idea for a wide range of applications such as Telecommunications, Photovoltaic System, Security System, emergency lighting and UPS.

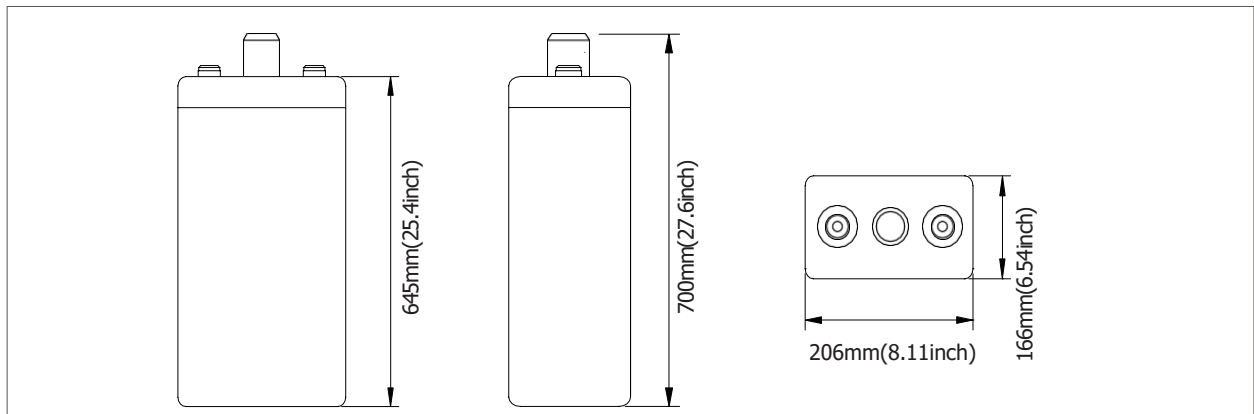
Features & Benefits

- Low maintenance.
- Super long service life.
- Transparent containers, convenient to observe.
- Special filter installation for acid fog proof.
- High quality and high reliability.
- Special pole sealed technology.
- DIN40736-1 compliant.

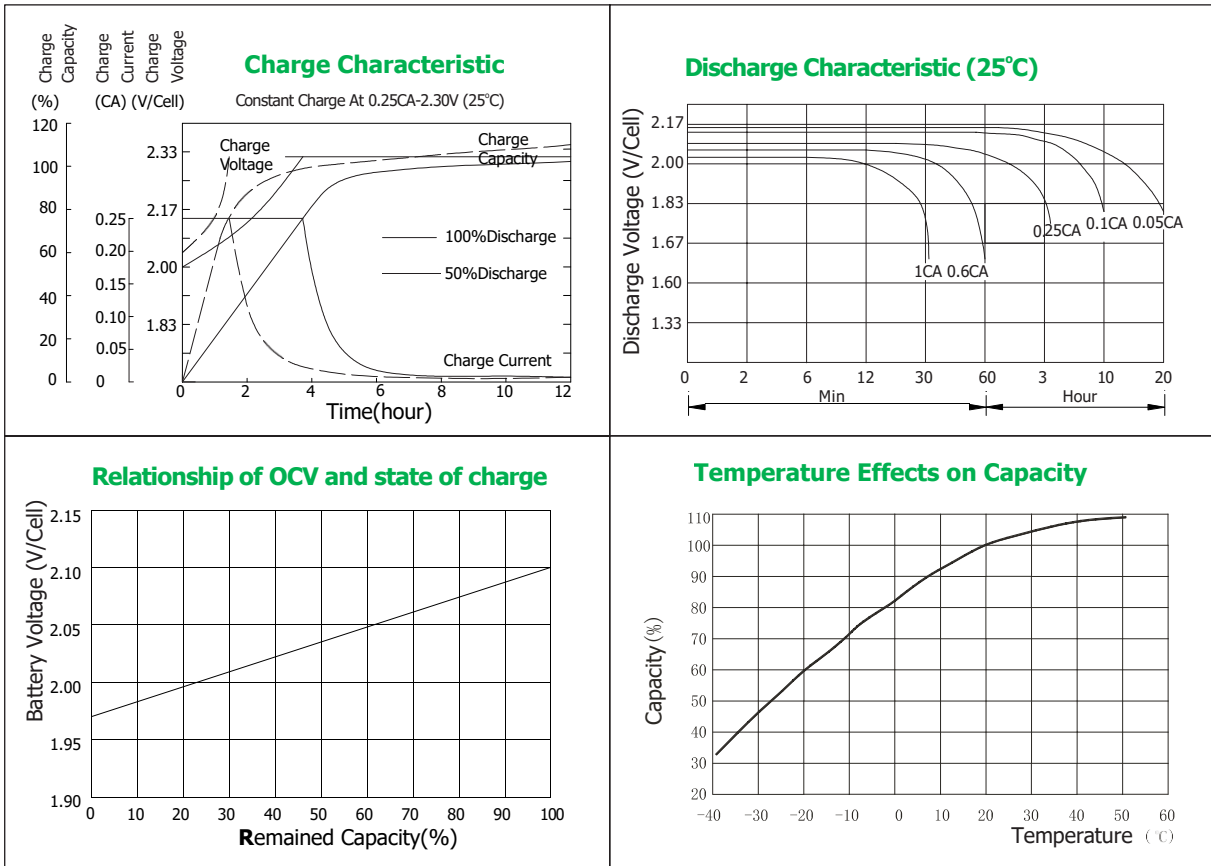


Terminal Dimensions

Cell Dimensions



Battery Model	OPzS600			
Designed Floating Life	20 Years			
Capacity(25°C)	24HR(27.1A,1.80V)	10HR(60A,1.80V)	5HR(101A,1.80V)	1HR(321A,1.75V)
	650AH	600AH	505AH	321AH
Dimensions	Length	Width	Height	Total Height
	166mm(6.54inch)	206mm(8.11inch)	645mm(25.4inch)	700mm(27.6inch)
Approx. Weight	without electrolyte:34Kg (75.0lbs)		with electrolyte:44.8Kg(98.8lbs)	
Internal Resistance	Full charged at 20°C: 0.00063 Ohm			
Self Discharge	3% of capacity declined per month at (20°C)			
Capacity Affected by Temp.(10HR)	40°C	25°C	0°C	-15°C
	102%	100%	85%	65%
Charge Voltage(25°C)	Cycle use		Float use	
	2.35-2.40V/cell(-5mV/cell/°C), max. Current: 150A		2.23V/cell(-3.0mV/cell/°C)	



Constant Current Discharge Data Units: Amperes (25°C, 77°F)

End voltage	minutes	hours										
	30	1	2	3	4	5	6	8	10	24	48	
1.60V	509.0	349.1	217.3	156.9	125.4	107.7	95.2	77.1	63.5	28.6	15.8	
1.65V	492.6	340.4	213.4	154.9	123.4	106.6	94.0	76.5	63.2	28.6	15.6	
1.70V	472.2	330.7	208.5	152.0	122.4	105.1	92.6	75.7	62.9	28.3	15.5	
1.75V	454.7	321.0	202.7	149.1	119.4	103.3	90.7	74.2	62.0	27.7	15.3	
1.80V	415.9	305.4	194.9	145.1	117.5	101.0	88.4	72.5	60.1	27.1	15.1	
1.85V	350.1	284.1	185.1	140.3	113.6	97.7	85.4	70.5	59.3	26.2	14.4	
1.95V	298.7	226.8	160.8	125.7	105.8	90.9	78.9	63.8	53.4	24.0	13.4	

Constant Power Discharge Data Units: Watts per cell (25°C, 77°F)

End voltage	minutes	hours										
	30	1	2	3	4	5	6	8	10	12	24	
1.60V	1031.4	789.8	435.6	331.2	264.9	223.0	196.8	162.0	136.8	114.2	60.1	
1.65V	977.0	734.5	432.7	329.3	262.9	222.0	194.8	160.8	135.8	113.4	59.7	
1.70V	932.4	687.9	426.7	324.3	258.9	218.9	192.8	158.8	134.0	111.9	58.9	
1.75V	894.8	647.3	414.8	316.3	248.9	210.9	187.8	156.1	131.5	109.8	58.1	
1.80V	859.1	610.7	399.9	307.3	242.9	200.9	179.6	148.8	124.8	104.2	57.1	
1.85V	825.5	568.1	385.0	292.4	230.9	195.9	172.6	144.8	119.6	99.9	55.6	
1.95V	753.3	505.8	349.2	282.5	242.9	203.0	164.5	137.6	108.5	90.6	52.9	

