

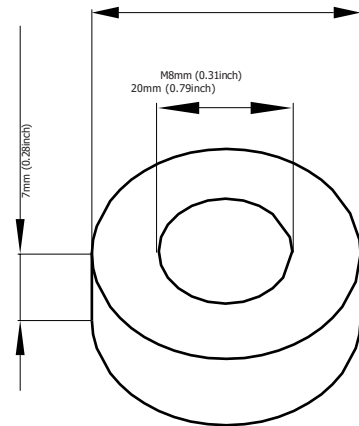


OPzS-3000

GREENSAVER OPzS batteries are designed with a combination of die-casting Tubular positive framework and superfluous electrolyte technologies to offer a very high level of reliability and a long service life.

GREENSAVER OPzS batteries used special filter and proof design to ensure no acid fog runs over and burning proof, and also convenient examine and maintenance.

GREENSAVER OPzS batteries make if idea for a wide range of applications such as Telecommunications, Photovoltaic System, Security System, emergency lighting and UPS.

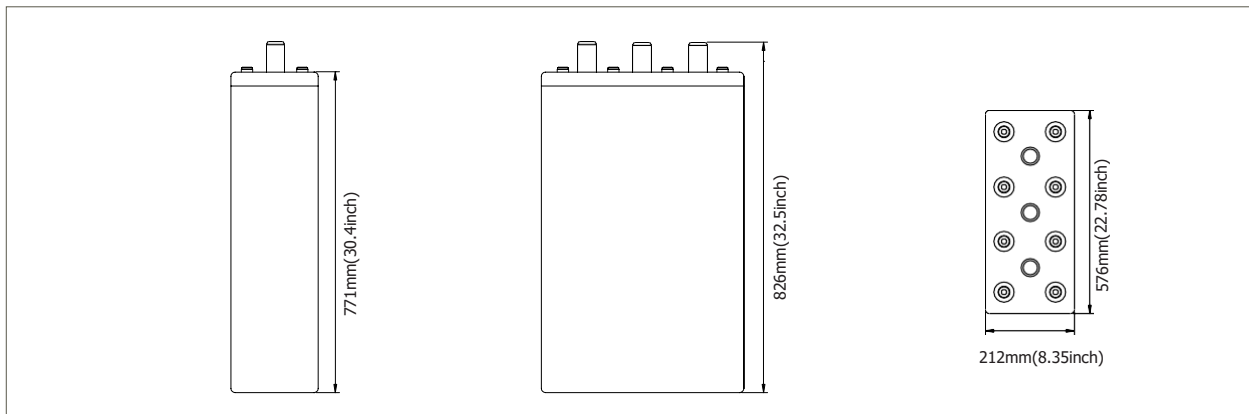


Features & Benefits

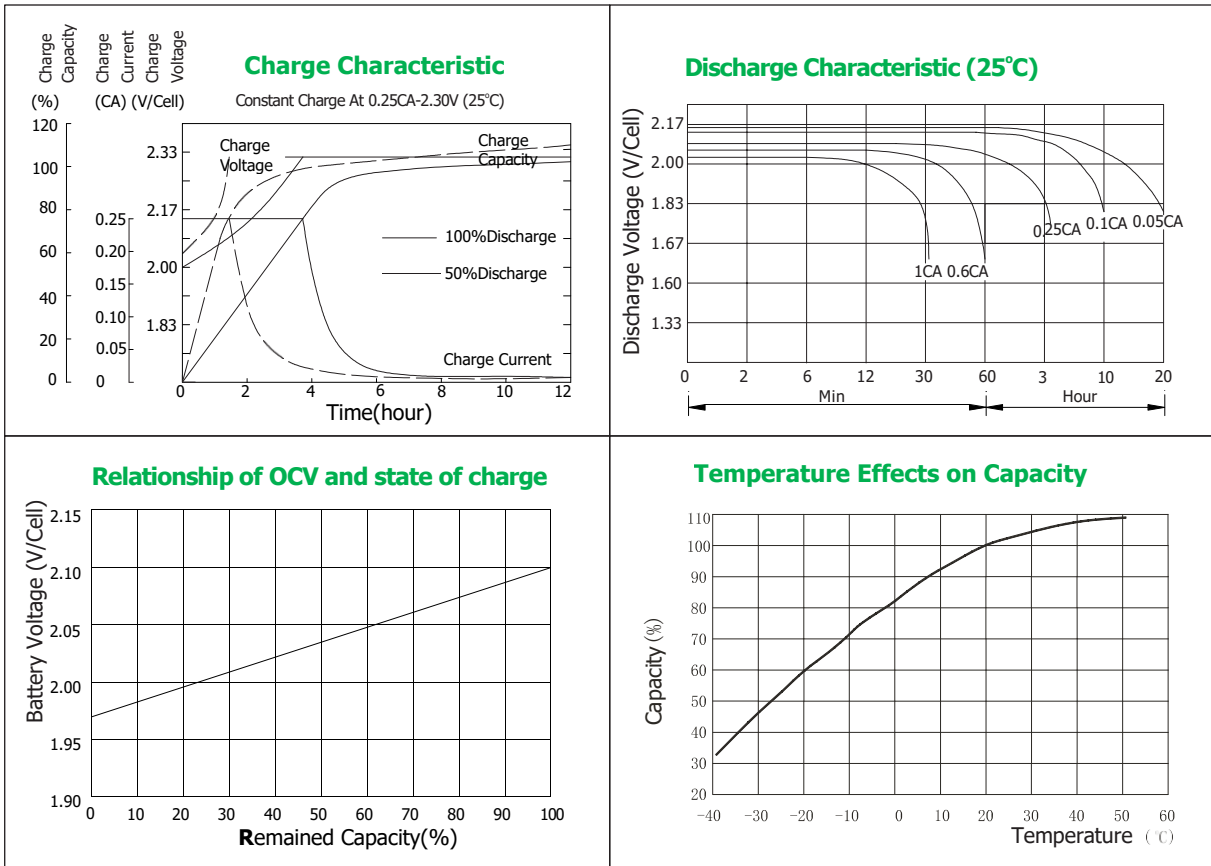
- Low maintenance.
- Super long service life.
- Transparent containers, convenient to observe.
- Special filter installation for acid fog proof.
- High quality and high reliability.
- Special pole sealed technology.
- DIN40736-1 compliant.

Cell Dimensions

Terminal Dimensions



Battery Model	OPzS3000			
Designed Floating Life	20 Years			
Capacity(25°C)	24HR(134A,1.80V)	10HR(300A,1.80V)	5HR(500A,1.80V)	1HR(1588A,1.75V)
	3216AH	3000AH	2500AH	1588AH
Dimensions	Length	Width	Height	Total Height
	576mm(22.78inch)	212mm(8.35inch)	771mm(30.4inch)	826mm(32.5inch)
Approx. Weight	without electrolyte:179Kg (395lbs)		with electrolyte:242Kg(534lbs)	
Internal Resistance	Full charged at 20°C: 0.00045 Ohm			
Self Discharge	3% of capacity declined per month at (20°C)			
Capacity Affected by Temp.(10HR)	40°C	25°C	0°C	-15°C
	102%	100%	85%	65%
Charge Voltage(25°C)	Cycle use		Float use	
	2.35-2.40V/cell(-5mV/cell/°C), max. Current: 750A		2.23V/cell(-3.0mV/cell/°C)	



Constant Current Discharge Data Units: Amperes (25°C, 77°F)

End voltage	minutes	hours									
	30	1	2	3	4	5	6	8	10	24	48
1.60V	2521.8	1727.9	1077.2	777.6	619.8	533.4	471.5	381.8	317.4	141.6	78.2
1.65V	2439.0	1685.6	1055.3	765.8	612.5	527.6	465.3	378.8	315.8	141.6	77.6
1.70V	2338.7	1636.2	1030.5	752.7	603.8	520.2	458.1	374.4	314.4	140.1	76.8
1.75V	2251.5	1588.2	1002.8	736.7	593.4	511.4	449.3	367.2	309.8	137.1	75.9
1.80V	2059.5	1512.6	964.7	719.1	580.2	499.8	437.6	358.7	300.5	134.3	74.7
1.85V	1732.2	1406.4	915.0	695.9	562.7	483.8	422.9	348.5	296.4	129.8	71.1
1.95V	1477.8	1122.8	796.5	622.7	522.9	450.0	390.6	315.8	266.6	119.1	66.3

Constant Power Discharge Data Units: Watts per cell (25°C, 77°F)

End voltage	minutes	hours									
	30	1	2	3	4	5	6	8	10	12	24
1.60V	5105.9	3909.2	2156.0	1639.8	1308.9	1105.4	972.0	802.1	677.0	565.3	297.6
1.65V	4835.7	3636.0	2142.6	1627.8	1300.1	1097.9	965.3	796.5	672.3	561.4	295.8
1.70V	4616.0	3405.9	2112.8	1605.5	1282.1	1082.6	951.9	785.6	663.0	553.6	291.8
1.75V	4428.8	3203.9	2053.1	1565.1	1232.6	1044.2	930.9	772.7	650.9	543.5	287.6
1.80V	4252.2	3023.0	1980.0	1521.9	1202.6	996.5	889.1	736.5	617.4	515.5	282.8
1.85V	4086.0	2812.1	1905.5	1447.4	1142.6	969.6	854.4	717.0	591.9	494.2	275.3
1.95V	3728.1	2503.2	1727.7	1398.2	1202.6	1004.4	814.4	681.0	536.9	448.3	262.1

